

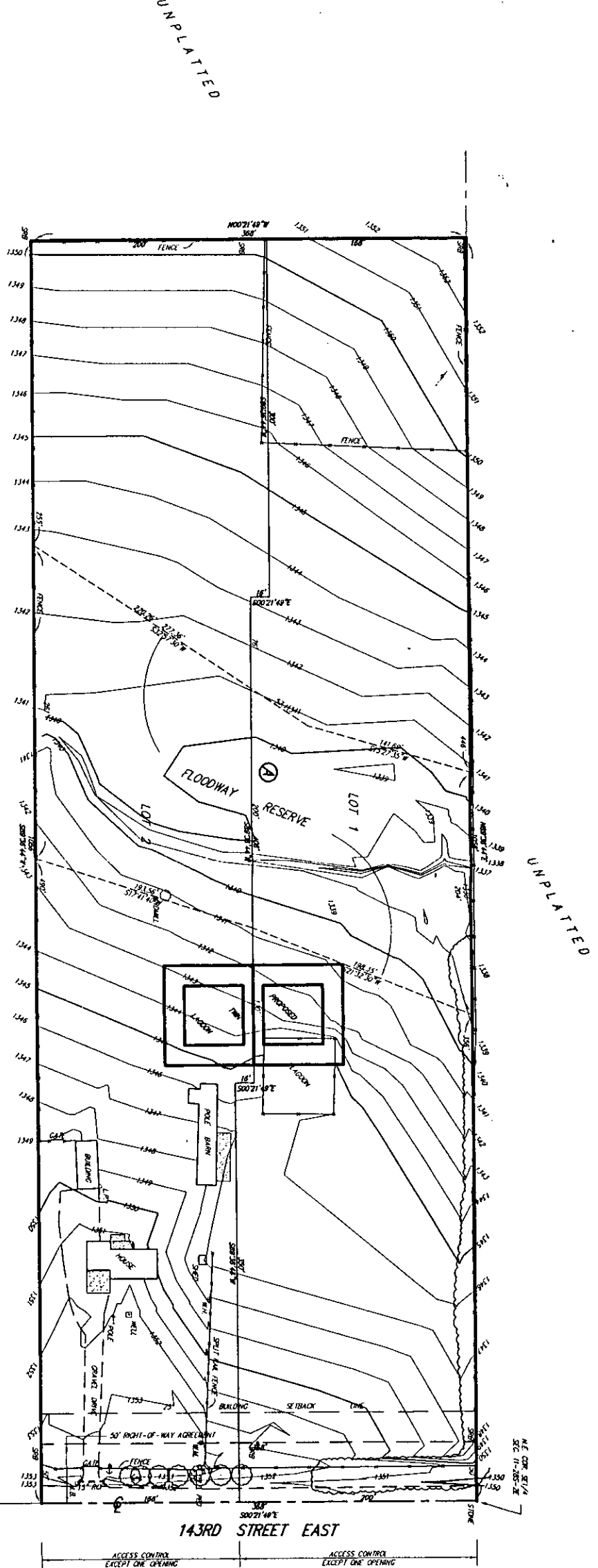
**REVISED
SKETCH PLAT
POWERS ACRES**
SEDCWICK COUNTY, KANSAS

LEGAL DESCRIPTION:
The North 368 feet of the East 1026 feet of the N1/2 of the SE1/4 of Section 11, Twp. 29-S, R-2-E of the 6th P.M., Sedgwick County, Kansas.

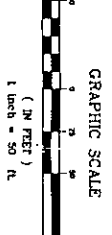
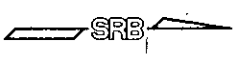
GROSS SIZE:
388,692.01 Sq. Ft.
8.971 Acres

MINIMUM LOT SIZE:
183,304.02 Sq. Ft.
4.142 Acres

Wayne Powers
Joseph Powers
3801 S. 144th St. E.
Olathe, Kansas 67057
Phone: 713-1089



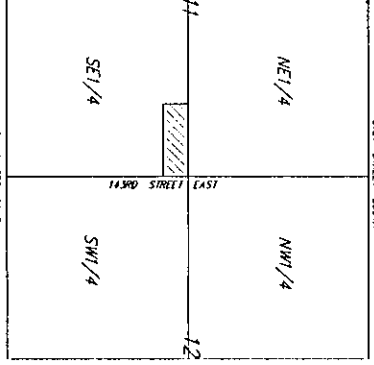
UNPLATTED



GRAPHIC SCALE
1 inch = 50 ft.

8000' MARK: 1057.7' N. OF ST. CORNER OF 21/4 S. 1/4 E. 1/4 SEC. 11, T. 29 S., R. 2 E., 6TH P.M., SEDGWICK COUNTY, KANSAS.

ON SITE: 1/4 S. 1/4 E. 1/4 SEC. 11, T. 29 S., R. 2 E., 6TH P.M., SEDGWICK COUNTY, KANSAS. (21-15342) (REV. 0)



VICINITY MAP

SRB ENGINEERS & ARCHITECTS
SAVOY, RUGGLES & BORN, P.A.
ENGINEERS & ARCHITECTS

