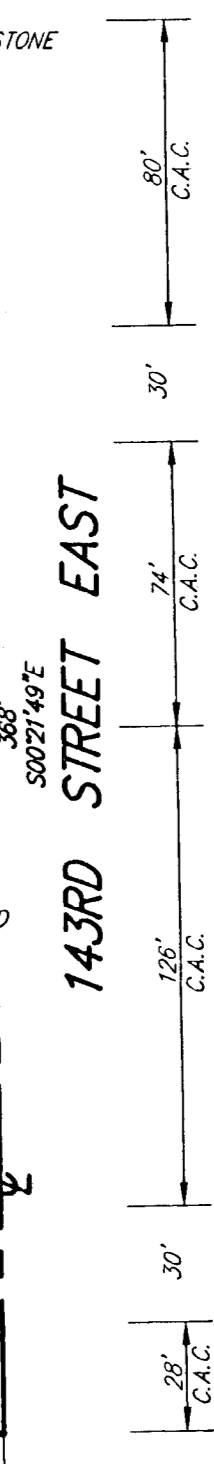
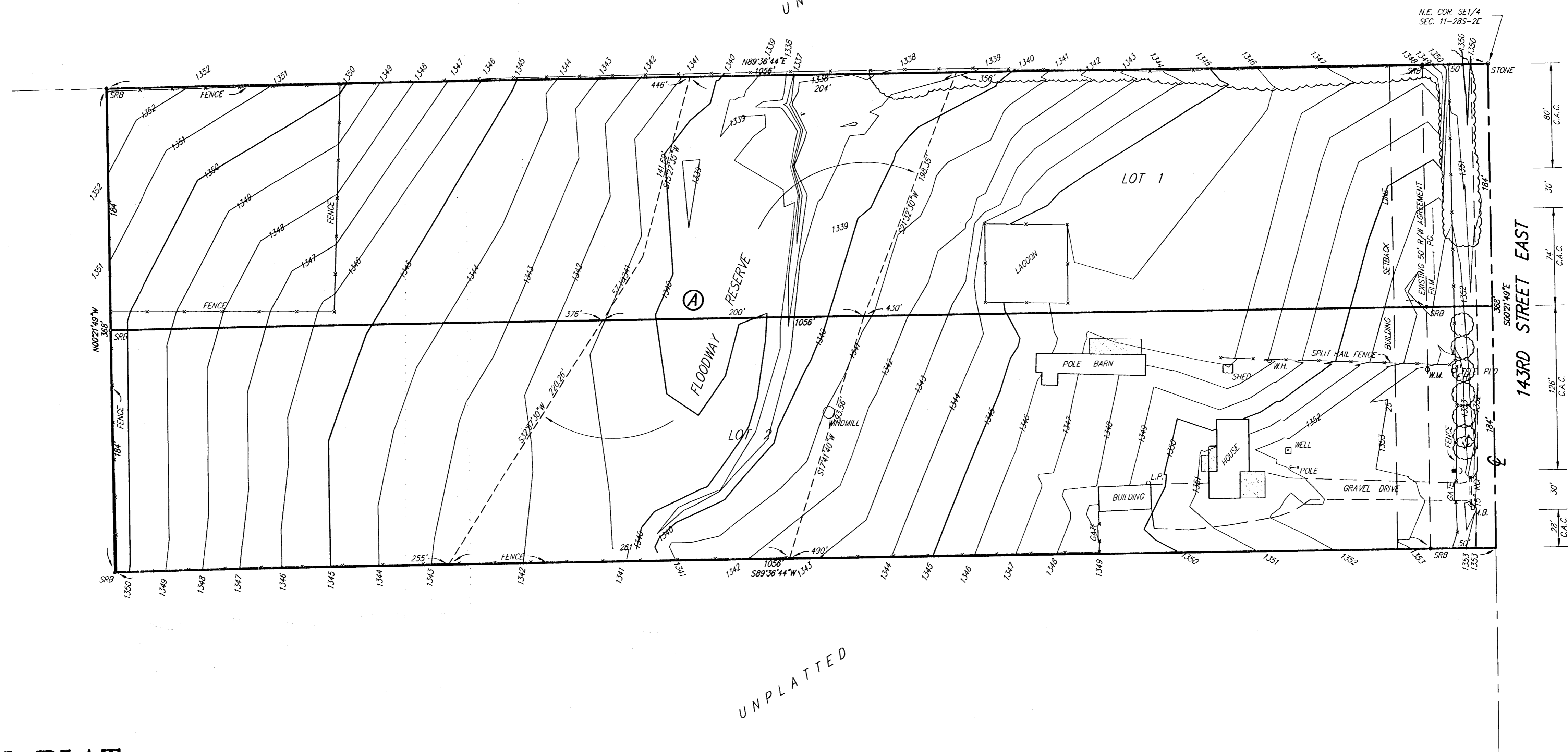


UNPLATTED

UNPLATTED

UNPLATTED



PRELIMINARY PLAT POWERS ACRES

SEDGWICK COUNTY, KANSAS

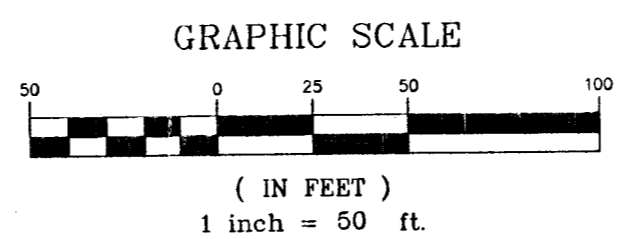
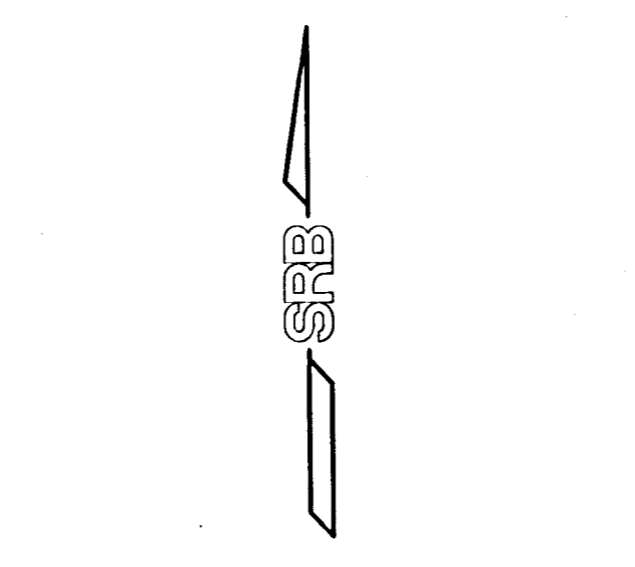
LEGAL DESCRIPTION:
The North 368 feet of the East 1056 feet of the N1/2 of the SE1/4 of Section 11, Twp. 28-S, R-2-E of the 6th P.M., Sedgwick County, Kansas.

Wayne Powers
Marilyn Powers
3601 S. 143rd St. E.
Derby, Kansas 67037
Phone: 733-1089

GROSS SIZE:
388,608.03 Sq. Ft.±
8.921 Acres±

LOT # 1 SIZE:
194,304.02 Sq. Ft.±
4.461 Acres±

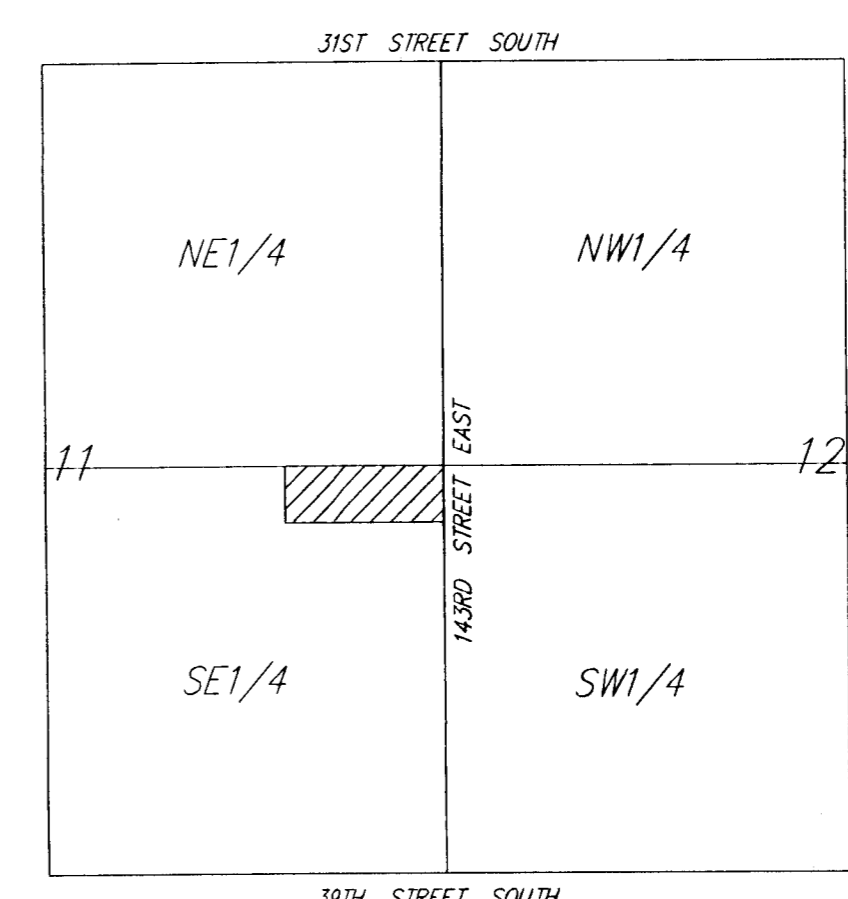
LOT # 2 SIZE:
194,304.02 Sq. Ft.±
4.461 Acres±



C.A.C. = COMPLETE ACCESS CONTROL

BENCH MARK: USGS "1" POST, N&W OF S.E. CORNER OF SE1/4, SEC. 11-28S-2E, ELEV.=1355.26 (NGVD)

ON SITE B.M.: STEP SPIKE IN POWER POLE 18' E. & 58' N. OF S.E. CORNER OF LOT 2, POWERS ACRES, ELEV.=1354.83 (NGVD)



VICINITY MAP