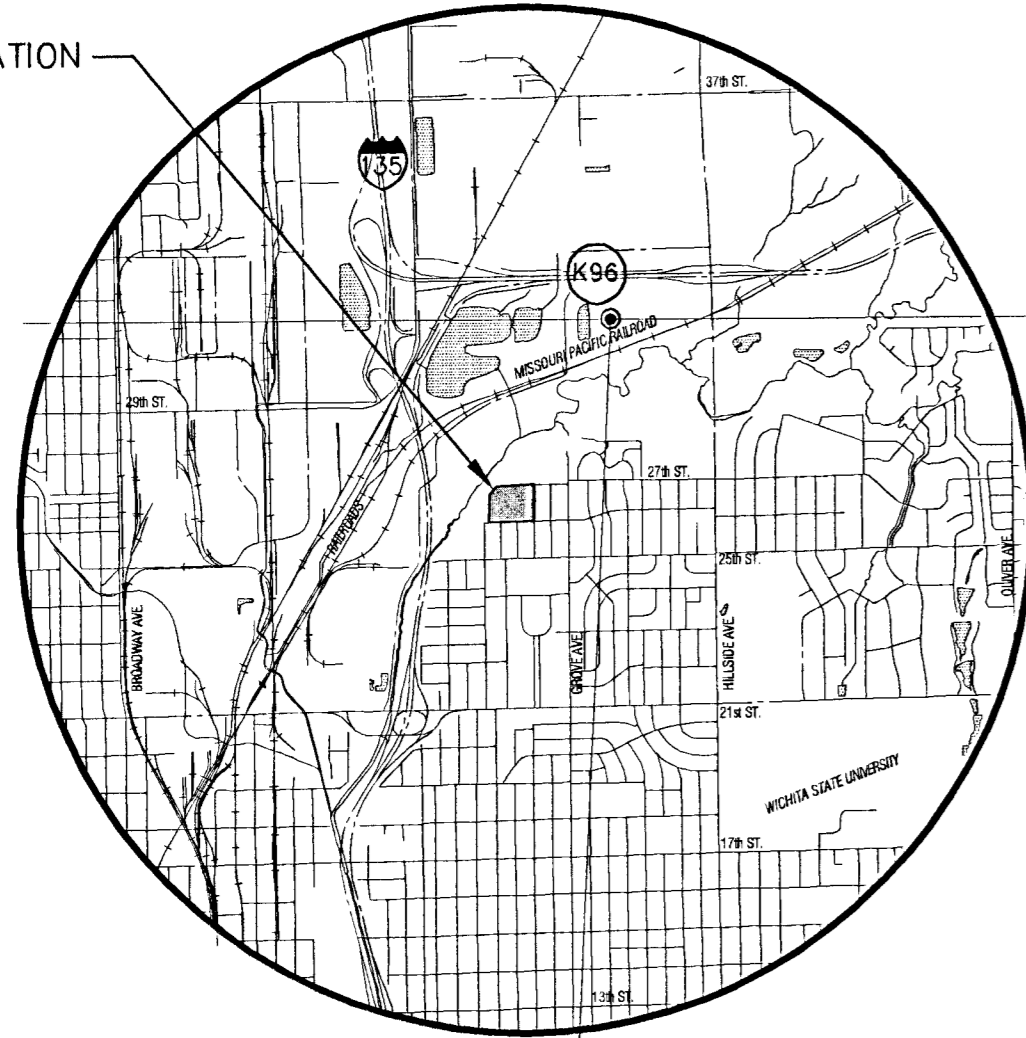


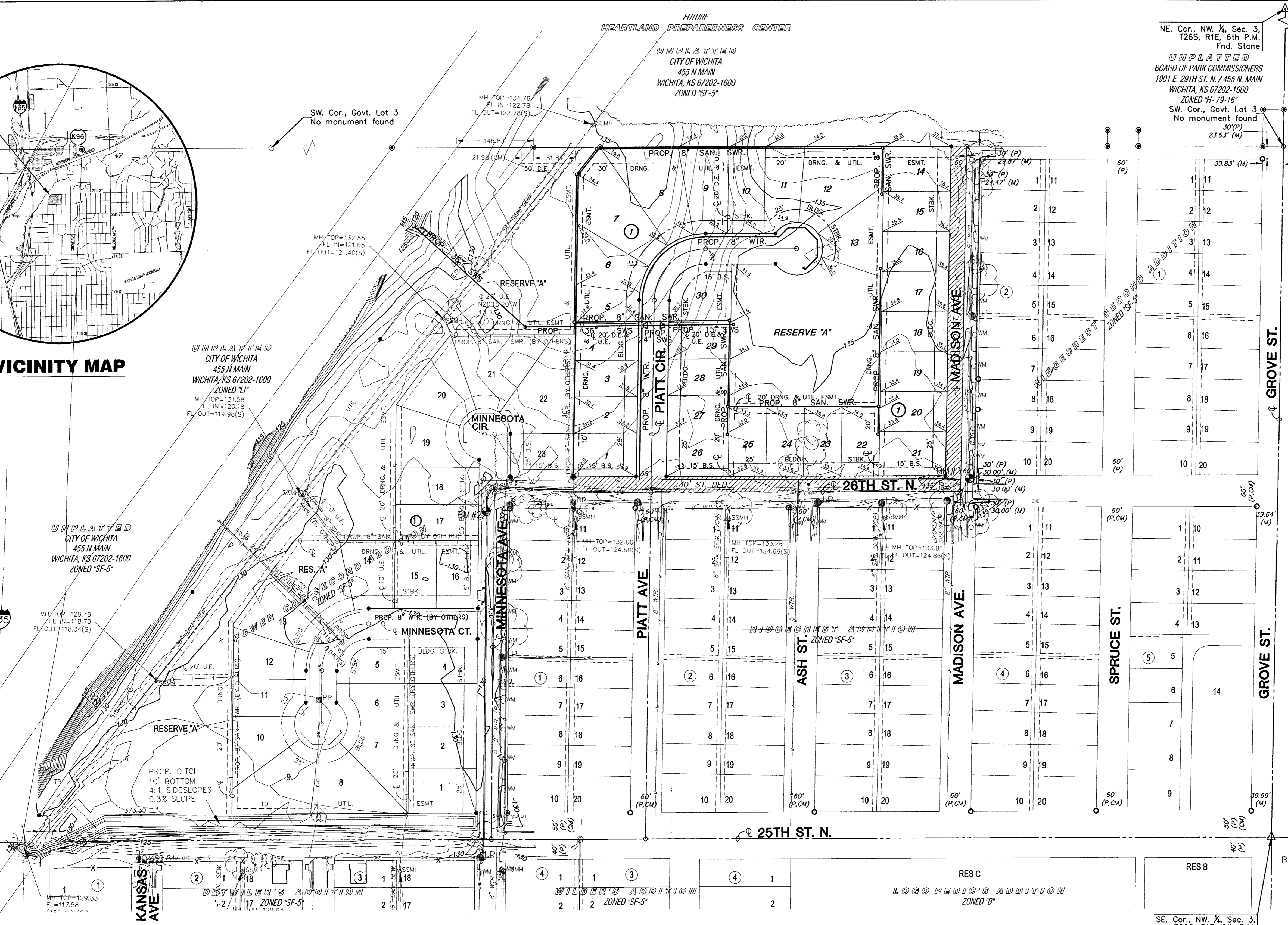
PLAT LOCATION



VICINITY MAP

AREA TABLE

Lot	Sq.Ft.	Acres
1	10,056	0.23
2	8,480	0.19
3	8,480	0.19
4	8,480	0.19
5	8,091	0.18
6	11,139	0.25
7	19,613	0.45
8	18,596	0.42
9	13,525	0.31
10	11,550	0.26
11	10,966	0.25
12	19,888	0.45
13	13,142	0.30
14	10,899	0.25
15	9,757	0.22
16	9,756	0.22
17	9,756	0.22
18	9,756	0.22
19	9,756	0.22
20	9,756	0.22
21	10,877	0.24
22	9,396	0.21
23	9,396	0.21
24	9,396	0.21
25	9,400	0.21
26	10,197	0.23
27	8,398	0.19
28	8,398	0.19
29	8,398	0.19
30	12,233	0.28



NE. Cor., NW 1/4, Sec. 3,
T26S, R1E, 6th P.M.
Fnd. Stone
UNPLATTED
BOARD OF PARK COMMISSIONERS
1901 E. 29TH ST. N. / 455 N. MAIN
WICHITA, KS 67202-1600
ZONED "H-79-16"
SW. Cor., Govt. Lot 3
No monument found
30'(P)
23.63' (M)

27th St. N.

BENCHMARK

- BM#1 City disc at SE cor. of 25th and Grove.
ELEV. = 141.65 City Datum
1329.05 NGVD
- BM#2 "□" Top of curb W. side of Minnesota, S. of & 26th St. 30'±.
ELEV. = 130.60 City Datum
1318.00 NGVD
- BM#3 "□" Top of curb at NE. cor. of Madison and 26th St.
ELEV. = 134.505 City Datum
1321.905 NGVD

NOTES

1. Zoning: Single Family SF-5
2. Reserves: "A" is platted for open space and is owned and maintained by the home owner association
3. According to FIRM Community-Panel Number 200328 0010 B this plat lies within flood zone "B".
4. Survey Date: October 30th, 2002
5. Existing Use: None - vacant lot
6. Total Lots: 30
7. Total Area: 11.25 acres

LEGEND

- ✱ - CONIFEROUS TREE & DIAMETER
- - DECIDUOUS TREE & DIAMETER
- - SIGN
- - BUSH
- PP - POWER POLE AND GUY ANCHOR
- ⊕ - ELECTRIC BOX
- ~~~~~ - EDGE OF TREES
- - FENCE
- BM#1 - BENCHMARK
- SMH - STORM WATER MANHOLE
- SSMH - SANITARY SEWER MANHOLE
- SMH - TELEPHONE MANHOLE
- △ - SECTION CORNER
- - 5/8" REBAR/MKCE CLS #39 SET
- - PROPERTY CORNER FOUND
- - POLE
- - GATE
- GM - GAS METER
- - WALL
- LP - LIGHT POLE
- PH - FIRE HYDRANT
- WV - WATER VALVE
- WM - WATER METER
- TR - TELEPHONE RISER
- - INLET
- - STORM SEWER PIPE
- - WATER LINE
- - SANITARY SEWER LINE
- - GAS LINE
- - TELEPHONE LINE
- - UNDERGROUND ELECTRIC LINE
- - OVERHEAD TELEPHONE
- - OVERHEAD ELECTRIC

PRELIMINARY LOT GRADING PLAN POWER C.D.C. THIRD ADDITION

OWNERS: City of Wichita, Wichita City Hall 455 N. Main St., Wichita, KS 67202 316-268-4351
DEVELOPER: Power Community Development Corporation, Inc. 1802 N. Hydraulic St., Wichita, KS 67204 316-267-3036

DATE: MARCH 2003

