

# PRELIMINARY PLAT OPERATING ENGINEERS ADDITION

SEDGWICK COUNTY, KANSAS

**LEGAL DESCRIPTION:**

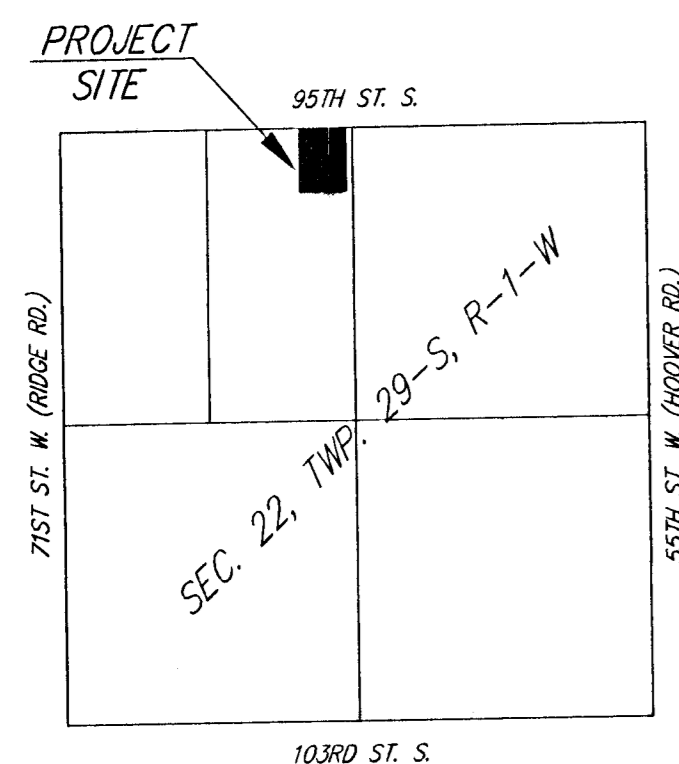
That part of the NW1/4 of Sec. 22, Twp. 29-S, R-1-W of the 6th P.M., Sedgwick County, Kansas described as commencing at the N.E. Corner thereof; thence S90°W, along the north line of said NW1/4, 60 feet for a place of beginning; thence continuing S90°W, along the north line of said NW1/4, 425 feet; thence S00°10'37"W, parallel with the east line of said NW1/4, 565 feet; thence N90°E, 425 feet; thence N00°10'37"E, 565 feet to the place of beginning.

**OWNER:**  
OPERATING ENGINEERS LOCAL 101  
ROBERT O. MATTER, ADMINISTRATIVE MANAGER  
P.O. BOX 197  
PLATTE CITY, MO. 64079

PH. (816) 640-2336

**GROSS SIZE:**  
240,123.69 Sq. Ft.±  
5.51 Acres±

**NET SIZE:**  
218,873.71 Sq. Ft.±  
5.02 Acres±



VICINITY MAP  
N.T.S.

