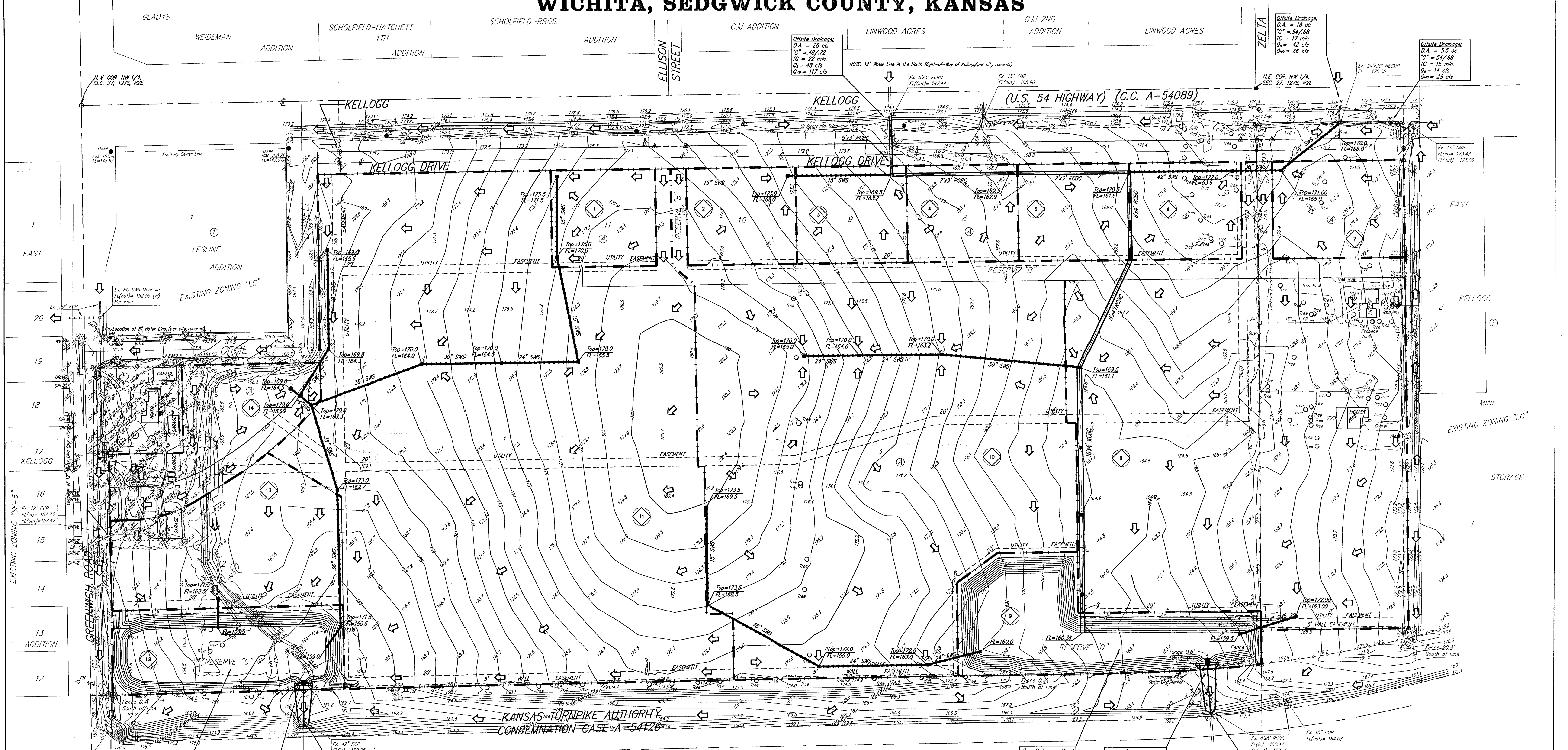


# DRAINAGE PLAN

## ONE KELLOGG PLACE 2ND ADDITION

### WICHITA, SEDGWICK COUNTY, KANSAS



Drainage Area	Area (Acres)	Cs	Cw	Ts	Ls	Qs	Qw	Qp
1	2.10	0.85	0.91	15	4.56	7.37	8.1	14
2	1.17	0.85	0.91	15	4.56	7.37	4.5	7.3
3	1.26	0.85	0.91	15	4.56	7.37	4.9	7.9
4	1.23	0.85	0.91	15	4.56	7.37	4.8	7.8
5	1.23	0.85	0.91	15	4.56	7.37	4.8	7.8
6	1.26	0.85	0.91	15	4.56	7.37	4.9	7.9
7	1.48	0.85	0.91	15	4.56	7.37	5.7	9.3
8	14.5	0.85	0.91	15	4.56	7.37	56	91
9	2.90	0.85	0.91	15	4.56	7.37	11	18
10	18.40	0.85	0.91	15	4.56	7.37	64	103
11	21.73	0.85	0.91	15	4.56	7.37	84	136
12	2.30	0.85	0.91	15	4.56	7.37	8.9	15
13	3.14	0.85	0.91	15	4.56	7.37	12	21
14	2.14	0.85	0.91	15	4.56	7.37	8.3	13

**Pro. Detention Pond**  
 W.S. = 160.30  
 D.W.S. = 163.41  
 Bottom = 150.30

**Pro. 25' Concrete Weir**  
 W/3'-23"x14" HERP.  
 FL(OUT) = 160.2  
 Concrete Flume To  
 KTA Box Culvert.

**Existing Conditions**  
 D.A. = 27.5 ac.  
 CN = 64  
 TC = 20 min.  
 Qs = 64 cfs  
 Qw = 141 cfs  
 Qp = 111 cfs

**Developed Conditions**  
 w/ Detention:  
 Qs = 34 cfs  
 Qw = 111 cfs

- = 3/4" IRON (FOUND)
- = 1/2" IRON (FOUND)
- = 1/2" REBAR (FOUND)
- = 3/4" REBAR (FOUND)
- = 5/8" REBAR (FOUND)
- = ANGLE (FOUND)
- = 5/8" REBAR w/ "COODECKE" CAP (FOUND)
- = 1/2" REBAR w/ "BAUGHMAN" CAP (FOUND)

(P) = PLATTED  
 (C) = CALCULATED  
 (M) = MEASURED

- = Gas Meter
- = Irrigation Control Valve - Valve Box
- = Mail Box
- = Electric Meter
- = Bell Pole
- = Sign
- = Stormwater Sewer Manhole
- = Water Meter
- = Water Valve
- = Cleanout
- = Fire Hydrant
- = Guy Anchor
- = Light Pole
- = Power Pole
- = FiberOptics Marker
- = Southwestern Bell Marker
- = Southwestern Bell Manhole
- = Southwestern Bell Pedestal

LOT	BLOCK	ELEVATION CITY DATUM
1	A	168.0
3	A	166.0
4	A	166.0
12	A	168.0

**MINIMUM BUILDING PAD ELEVATIONS FOR LOWEST OPENING TO THE STRUCTURES**

LOT	BLOCK	ELEVATION CITY DATUM
1	A	168.0
3	A	166.0
4	A	166.0
12	A	168.0

**Pro. Detention Pond**  
 W.S. = 160.80  
 D.W.S. = 163.85  
 Bottom = 150.80

**Pro. 35' Concrete Weir**  
 W/2'-38"x24" HERP.  
 FL(OUT) = 160.8  
 Concrete Flume To  
 KTA Box Culvert.

**Existing Conditions**  
 D.A. = 96.5 ac.  
 CN = 64  
 TC = 35 min.  
 Qs = 169 cfs  
 Qw = 383 cfs  
 Qp = 375 cfs

**Developed Conditions**  
 w/ Detention:  
 Qs = 115 cfs  
 Qw = 375 cfs

**DRAINAGE NOTES:**

- The Existing Soil Type per Soil Survey of Sedgwick County, Kansas is Irwin Silty Clay Loam. The Hydrologic Group Listed in D.
- This Parcel of Land is Not Located in a FEMA Flood Hazard Zone Area Per FIRIM Map. (Community/ Panel Number; 200328 0030) Effective Date: May 15, 1986.
- The Proposed Drainage Plan Improvements Within This Plat, That Provided Herein is a Generally Defined Plan to Follow for Design. It is Recognized and Assumed That Upon the Final Design of Site Grading and Storm Sewer Improvements the Designer Will Modify or Alter the General Drainage Plan As Necessary in Order to Implement the Installation of the Improvements to Obtain the Most Economical Design and Construction Possible.