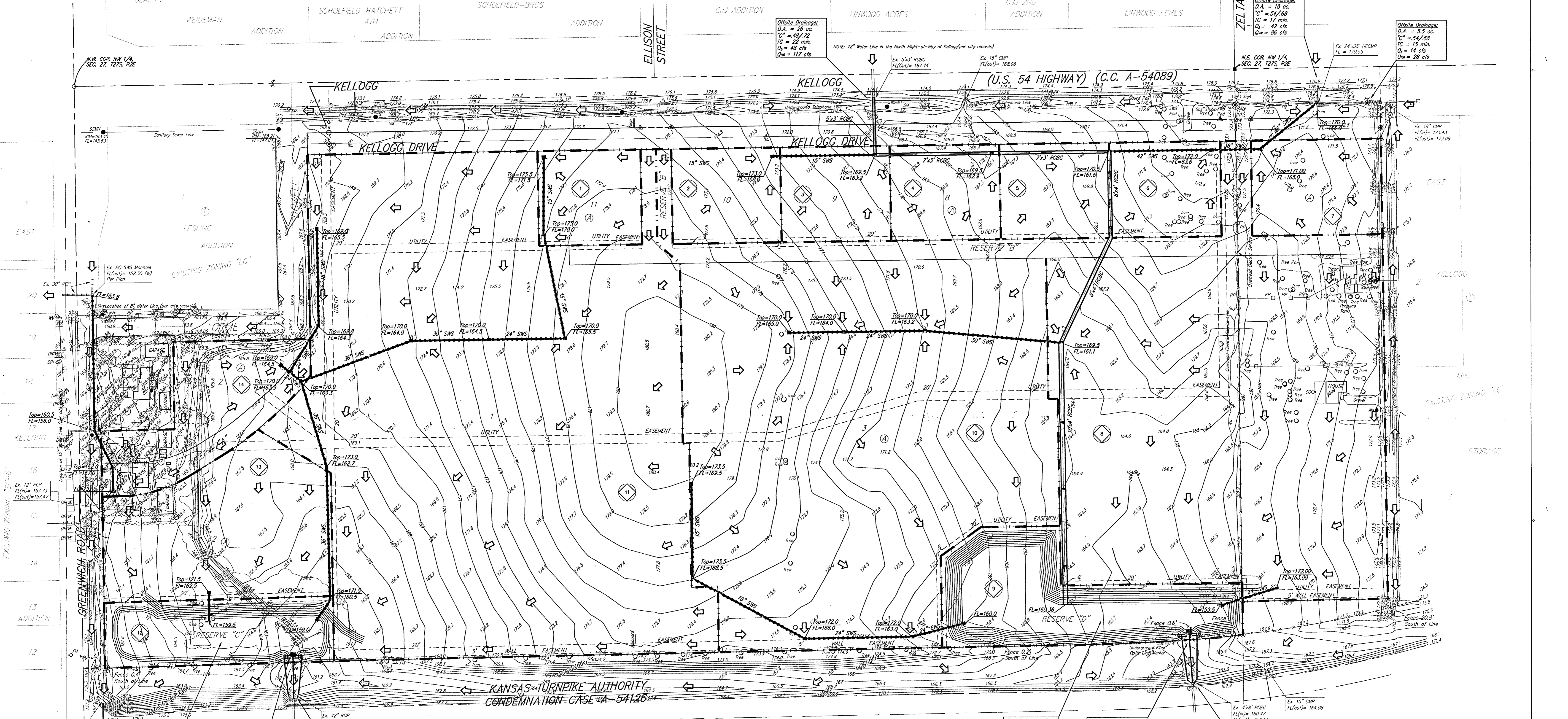


# DRAINAGE PLAN

## ONE KELLOGG PLACE 2ND ADDITION

### WICHITA, SEDGWICK COUNTY, KANSAS



Drainage Area	Area (acres)	C <sub>s</sub>	C <sub>m</sub>	T <sub>r</sub> (min)	L <sub>s</sub> (ft)	I <sub>s</sub> (in/hr)	Q <sub>s</sub> (cfs)	Q <sub>m</sub> (cfs)
1	2.10	0.85	0.91	15	4.56	7.37	8.1	14
2	1.17	0.85	0.91	15	4.56	7.37	4.3	7.3
3	1.28	0.85	0.91	15	4.56	7.37	4.9	7.9
4	1.25	0.85	0.91	15	4.56	7.37	4.8	7.8
5	1.25	0.85	0.91	15	4.56	7.37	4.8	7.8
6	1.28	0.85	0.91	15	4.56	7.37	4.9	7.9
7	1.48	0.85	0.91	15	4.56	7.37	5.7	9.3
8	14.5	0.85	0.91	15	4.56	7.37	56	91
9	2.90	0.85	0.91	15	4.56	7.37	11	18
10	16.40	0.85	0.91	15	4.56	7.37	64	103
11	21.73	0.85	0.91	15	4.56	7.37	84	136
12	1.83	0.85	0.91	15	4.56	7.37	7.1	12
13	3.61	0.85	0.91	15	4.56	7.37	14	23
14	2.14	0.85	0.91	15	4.56	7.37	8.3	13

**Pro. Detention Pond**  
 W.S. = 160.30  
 D.W.S. = 163.66  
 Bottom = 150.30

**Pro. 25" Concrete Weir**  
 W/3-23"14" HEROP.  
 FL(in)=160.2  
 Concrete Flume To  
 KIA Box Culvert.

**Existing Conditions**  
 D.A. = 27.5 ac.  
 CN = 64  
 TC = 20 min.  
 Q<sub>s</sub> = 64 cfs  
 Q<sub>m</sub> = 141 cfs  
 Developed Conditions  
 w/ Detention:  
 Q<sub>s</sub> = 47 cfs  
 Q<sub>m</sub> = 141 cfs

**KANSAS TURNPIKE AUTHORITY**  
 CONDEMNATION CASE A-54126

**Pro. 30" Concrete Weir**  
 W/2-30"24" HEROP.  
 FL(in)=160.8  
 Concrete Flume To  
 KIA Box Culvert.

**Existing Conditions**  
 D.A. = 96.5 ac.  
 CN = 64  
 TC = 35 min.  
 Q<sub>s</sub> = 169 cfs  
 Q<sub>m</sub> = 383 cfs  
 Developed Conditions  
 w/ Detention:  
 Q<sub>s</sub> = 115 cfs  
 Q<sub>m</sub> = 375 cfs

**Pro. Detention Pond**  
 W.S. = 160.80  
 D.W.S. = 165.85  
 Bottom = 150.80

**Pro. 30" Concrete Weir**  
 W/2-30"24" HEROP.  
 FL(in)=160.8  
 Concrete Flume To  
 KIA Box Culvert.

**Existing Conditions**  
 D.A. = 5.5 ac.  
 CN = 64  
 TC = 15 min.  
 Q<sub>s</sub> = 14 cfs  
 Q<sub>m</sub> = 28 cfs

**DRAINAGE NOTES:**

- The Existing Soil Type per Soil Survey of Sedgewick County, Kansas is Irwin Silty Clay Loam. The Hydrologic Group Listed in D.
- This Parcel of Land is Not Located in a FEMA Flood Hazard Zone Area Per FIRM Map. (Community/ Panel Number: 200328 0030) Effective Date: May 15, 1986.
- The Proposed Drainage Plan Provided Herein is a Generally Defined Plan to Follow for Design. It is Recognized and Assumed That Upon the Final Design of Site Grading and Storm Sewer Improvements Within This Plot, That the Designer Will Modify or Alter the General Drainage Plan As Necessary in Order to Implement the Installation of the Improvements to Obtain the Most Economical Design and Construction Possible.

- GM = Gas Meter
- ICV = Irrigation Control Valve - Valve Box
- MB = Manhole
- EM = Electric Meter
- SP = Sign Pole
- Sign = Sign
- SWSM = Stormwater Sewer Manhole
- WM = Water Meter
- WV = Water Valve
- CG = Closeset
- FFH = Fire Hydrant
- GU = Guy Anchor
- LP = Light Pole
- PP = Power Pole
- FM = Fiber Optics Marker
- SM = Southwestern Bell Marker
- SBM = Southwestern Bell Manhole
- SWB Pod = Southwestern Bell Pedestal

- = 3/4" IRON (FOUND)
- = 1/2" IRON (FOUND)
- = 1/4" IRON (FOUND)
- = 5/8" REBAR (FOUND)
- = AXLE (FOUND)
- = 1/2" REBAR W/ "GOEDECKE" CAP (FOUND)
- = 1/2" REBAR W/ "BAUGHMAN" CAP (FOUND)

- (P) = PLATTED
- (C) = CALCULATED
- (M) = MEASURED

DATE OF PREPARATION: 29 JAN. 2001  
 DATE OF TOPOGRAPHY: 7 JUNE 2000  
 CONTOUR INTERVAL = 1 FOOT  
 ADDITIONAL BUILDING SETBACKS PER C.U.P. DP-196, AMENDMENT #3.

MINIMUM BUILDING PAD ELEVATIONS FOR LOWEST OPENING TO THE STRUCTURES

LOT	BLOCK	ELEVATION CITY DATUM
1	A	168.0
3	A	166.0
4	A	166.0
12	A	168.0

**BENCHMARK:**  
 GREENWICH RD. & KELLOGG - CITY OF WICHITA DISC.  
 NW COR. OF TRAFFIC SIGNAL LIGHT POLE BASE.  
 48.60' N.W. OF E. OF SANITARY SEWER MANHOLE.  
 48.70' S. OF E. OF TRAFFIC SIGNAL MANHOLE IN KELLOGG MEDIAN  
 70.50' E. OF BACK OF E. CURB ON E. SIDE OF MEDIAN IN  
 GREENWICH ROAD  
 ELEV. = 164.78 CITY DATUM