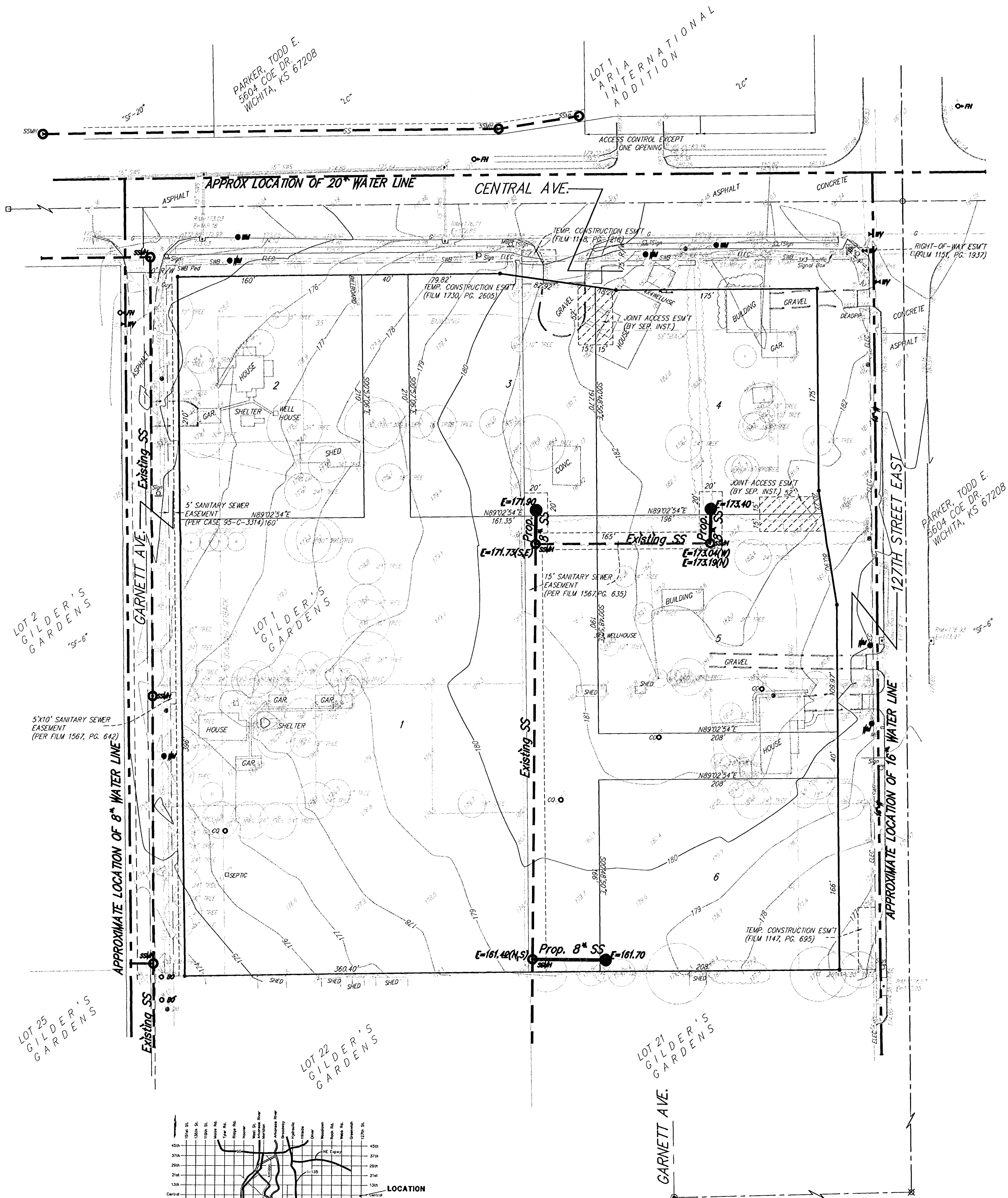
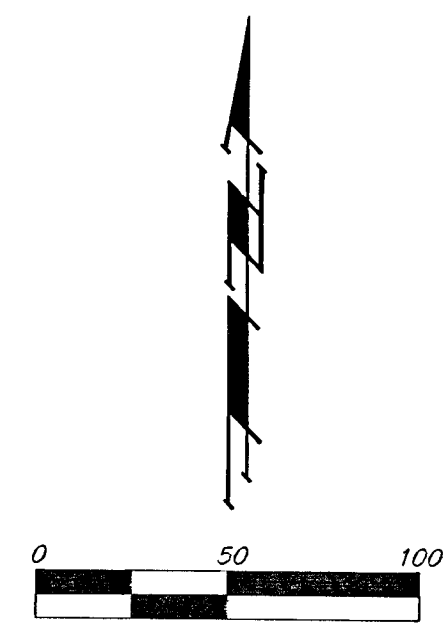


UTILITY PLAN  
**127TH RETAIL ADDITION**  
 WICHITA, SEDGWICK COUNTY, KANSAS

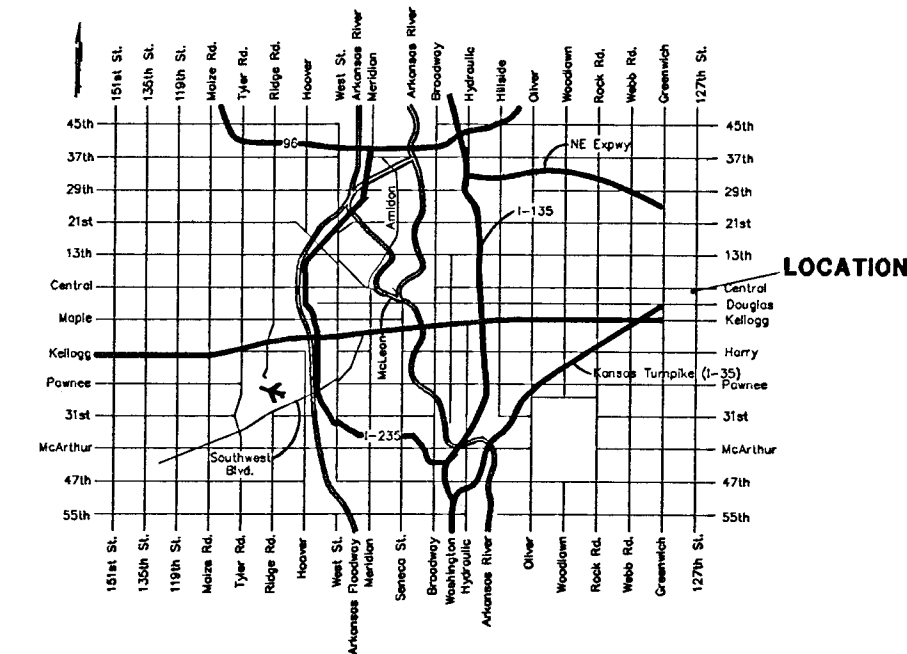


LOT 2  
GILDER'S  
GARDENS

LOT 25  
GILDER'S  
GARDENS

LOT 22  
GILDER'S  
GARDENS

LOT 21  
GILDER'S  
GARDENS



— PROPOSED 8" SANITARY SEWER