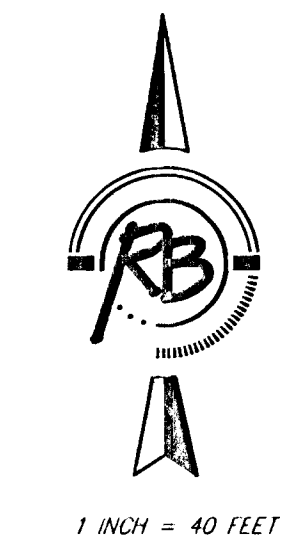
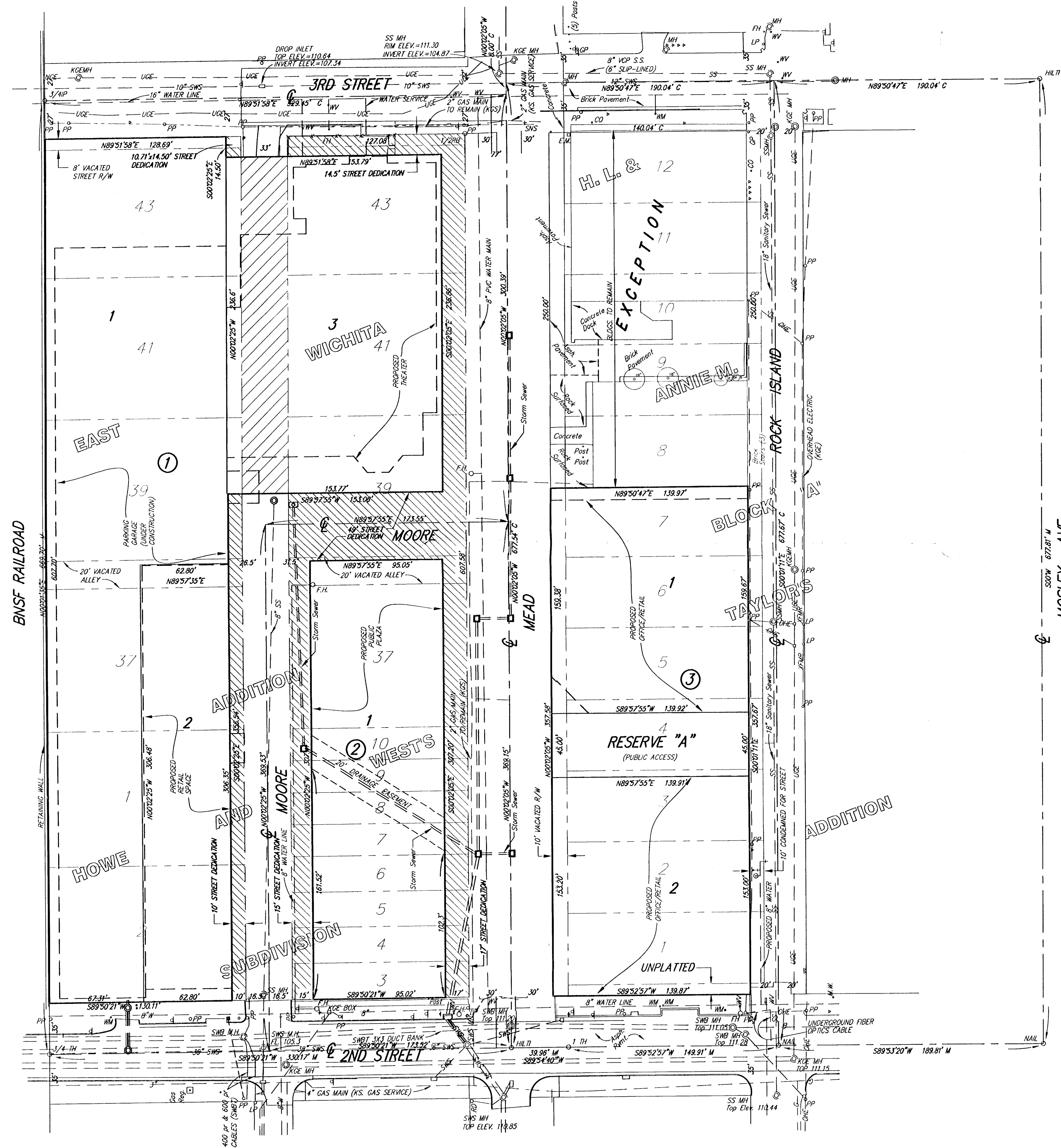


PRELIMINARY PLAT OLD TOWN SQUARE ADDITION

Wichita, Sedgwick County, Kansas



1 INCH = 40 FEET

BENCH MARK: "1" CUT W. END CURB RETURN
N.W. CORNER OF 2ND STREET & MOSLEY
ELEV.=111.16 (CITY OF WICHITA DATUM)

LEGEND

- G GAS LINE (KANSAS GAS SERVICE)
- W WATER LINE (CITY OF WICHITA)
- OHE OVERHEAD ELECTRIC (WESTAR)
- UGE UNDERGROUND ELECTRIC (WESTAR)
- SS SANITARY SEWER (CITY OF WICHITA)
- SWS STORM WATER SEWER (CITY OF WICHITA)
- BENCHMARK
- ◻ TELE. PED TELEPHONE PEDESTAL (SWBT)
- ◻ W.M. WATER METER
- ◻ W.V. WATER VAULT
- ◻ F.H. FIRE HYDRANT
- 4 SIGN
- ◻ E.M. ELECTRIC METER (WESTAR)
- ◻ G.M. GAS METER (KANSAS GAS SERVICE)
- ◻ PP. POWER POLE (WESTAR)
- ◻ XFM. TRANSFORMER (WESTAR)
- ◻ POST GUARD POST
- ◻ L.P. LIGHT POLE
- ◻ R.D. ROOF DRAIN
- ◻ G.P. GUY POLE
- ◻ C.O. CLEAN OUT
- ◻ M.W. MONITOR WELL
- ◻ KGE MH KGE MANHOLE
- ◻ SWB MH SWB MANHOLE
- ◻ SS MH SANITARY SEWER MANHOLE
- ◻ SWS MH STORM WATER SEWER MANHOLE

- RIGHT-OF-WAY TO BE VACATED
- RIGHT-OF-WAY TO BE DEDICATED

LEGAL DESCRIPTION:

Lots 1 through 10, Howe and West's Subdivision in City of Wichita, Kansas Sedgwick County, Kansas, Lots 37, 39, 41 and 43, East Wichita Addition, Wichita, Sedgwick County, Kansas, together with any vacated alley and street Rights-of-way bounded by 2nd Street on the south, 3rd Street on the north, Mosley Avenue on the east and The Atchinson Topeka & Santa Fe Rail Road on the west.

And Lots 1 through 7, Block A, H.L. and Annie M. Taylor's Addition to Wichita, Kansas, and the unplatted parcel lying north of Second Street and adjacent to said Lot 1; except the east 10 feet thereof; together with the east 10 feet of vacated Mead Avenue adjacent on the west to said Lots and parcel.

OWNERS:

- The City of Wichita
- Old Town Warren Theatre, LLC
- SE Building, L.L.C.
- DD Realty, L.L.C.

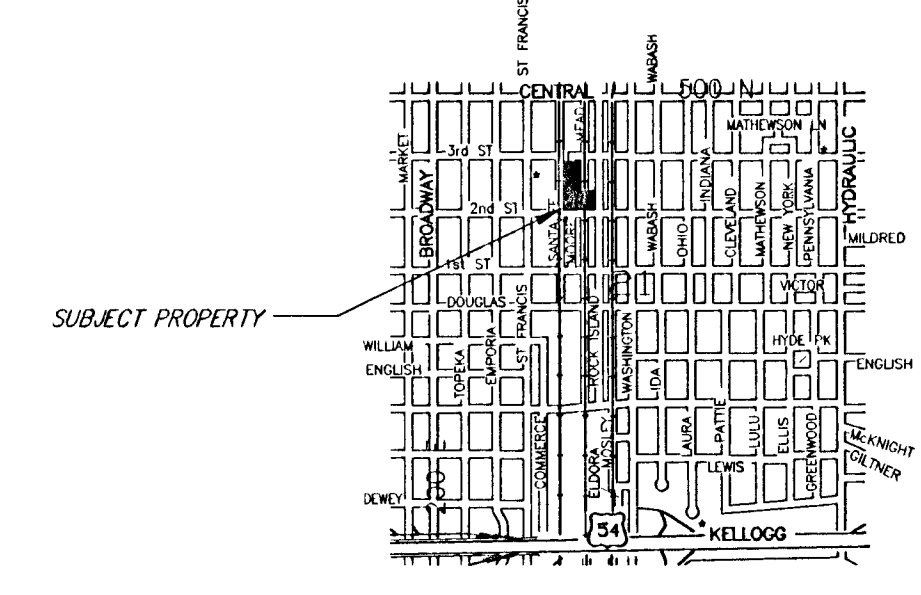
SUBDIVIDER & ENGINEER:

Ruggles & Bohm P.A.

FLOOD ZONE:

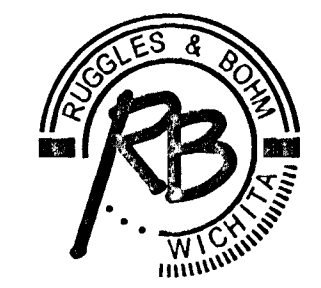
According to the FEMA/FIRM Community Panel No. 200328 0025 B, effective May 15, 1986; the property shown hereon is located in Zone B, an area of minimal flooding.

GROSS AREA:
219,966 Sq. Ft. ±
5.05 Acres ±



VICINITY MAP
NOT TO SCALE

See Site Grading Plan for existing and proposed grades.



Ruggles & Bohm, P.A.
Engineering, Surveying, Land Planning
924 North Main
Wichita, Kansas 67203
www.rbkansas.com
(316) 264-8008
(316) 264-4621 fax
E-mail: info@rbkansas.com

DWG FILE: 2199P-W.C.
PROJECT NO. 0202199P
August 12, 2002