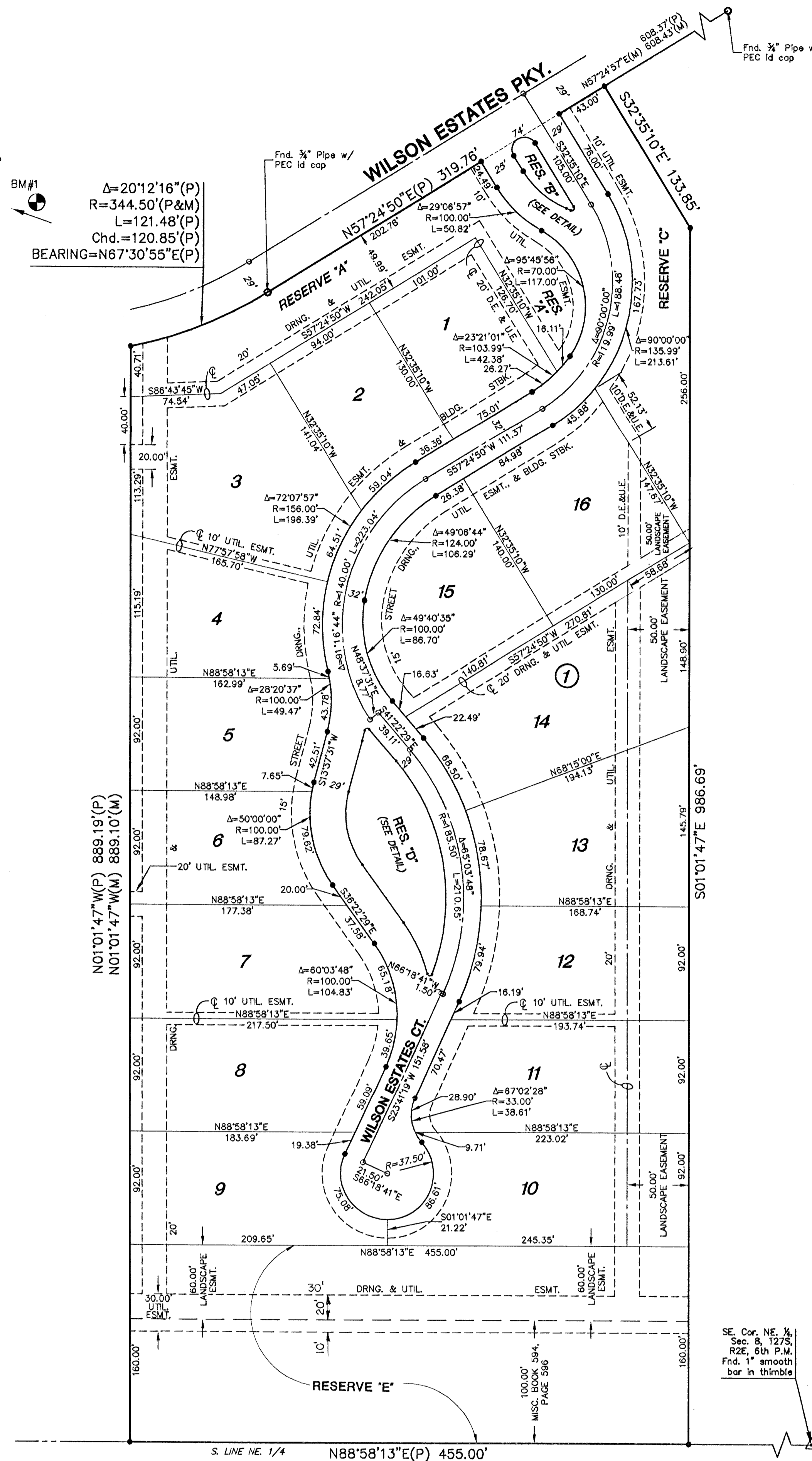


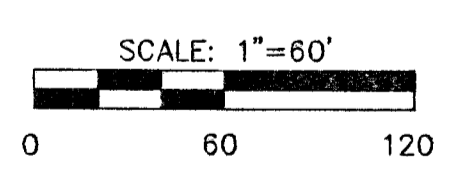
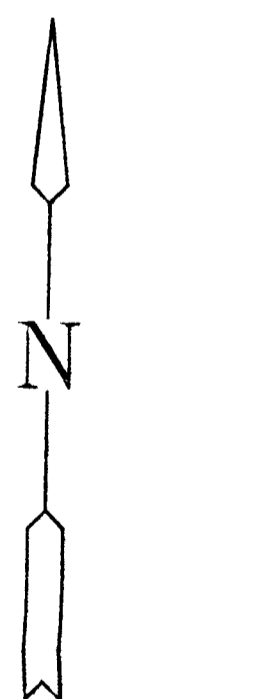
FINAL PLAT
WILSON FARMS FOURTH ADDITION
 AN ADDITION TO WICHITA, SEDGWICK COUNTY, KANSAS



BM#1
 $\Delta=20'12.16''(P)$
 $R=344.50'(P\&M)$
 $L=121.48'(P)$
 $Chd.=120.85'(P)$
 $BEARING=N67^{\circ}30'55''E(P)$

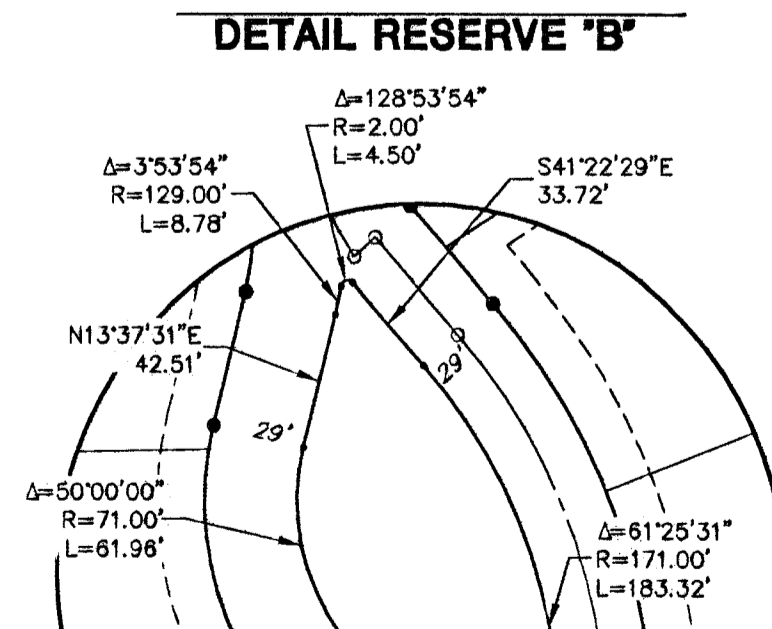
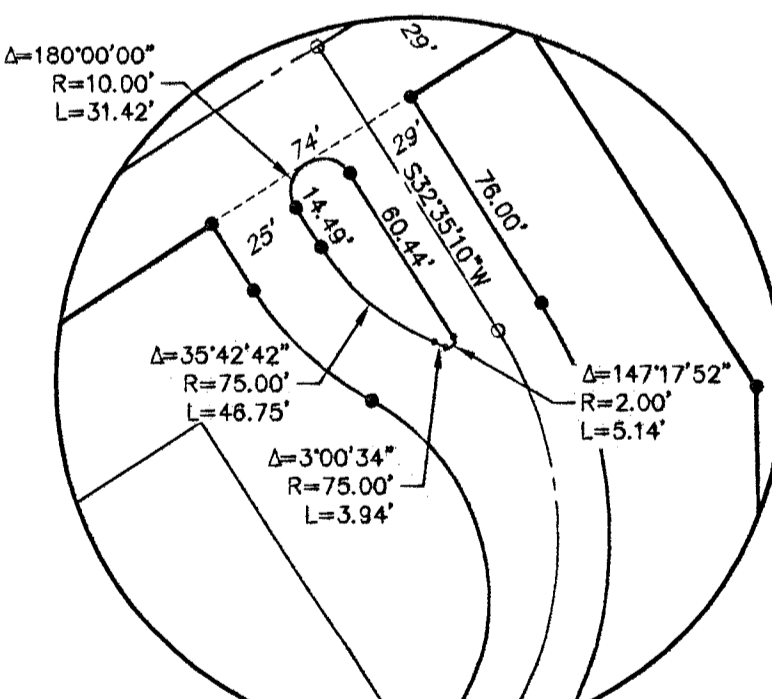
$N01^{\circ}01'47''W(P)$ 886.15'(P)
 $N01^{\circ}01'47''W(M)$ 886.10'(M)

SE. Cor. NE. 1/4
 Sec. 8, T22S
 R2E, 6th P.M.
 Fnd. 1" smooth
 bar in triangle



- LEGEND**
- Δ = Section Corner Monument Found
 - \circ = Found Survey Monument (see annotated caption for type)
 - \bullet = Set 5/8" Rebar w/ MKEC CLS 39 id. Cap
 - U.E. = Utility Easement
 - D.E. = Drainage Easement
 - (P) = Platted
 - (M) = Measured

BENCHMARK
 BM#1 - Chiseled square on the South end of the East headwall of a RCD, 10' South and 20' East of the Southernmost corner of Lot 27, Block 1, Wilson Farms Third Addition.
 Elevation = 189.38 City Datum
 1376.78 NGVD



I, Gregory J. Allison, a Registered Land Surveyor in Kansas, do hereby certify that I have been in responsible charge of surveying and plotting of "WILSON FARMS FOURTH ADDITION" an addition to Wichita, Sedgwick County, Kansas, into Lots, a Block, Reserves, and a Street, the same being accurately set forth in the accompanying plat and described herein:

A tract of land lying in a portion of Lot 1, Block 2, Legacy Park Wilson Estates Addition to Wichita, Sedgwick County, Kansas, TOGETHERWITH, a portion of Reserve "B", of said addition, said tract being more particularly described as follows:

BEGINNING at the Southwest corner of said Lot 1, Block 2, said corner being common with Southeast corner of Wilson Farms Addition to Wichita, Sedgwick County, Kansas; thence along the common line with said Wilson Farms Addition, and said Legacy Park Wilson Estates Addition, on a platted bearing of $N01^{\circ}01'47''W$, 889.19 feet to the Northwest corner of said Reserve "B" said corner lying on a curve to the left; thence along said North line and along said curve 121.47 feet, said curve having a central angle of $20'12.16''$, a radius of 344.50 feet, and a long chord distance of 120.85 feet, bearing $N67^{\circ}30'41''E$; thence continuing along said North line $N57^{\circ}24'50''E$, 319.76 feet; thence $S32^{\circ}35'10''E$, 133.86 feet, thence $S01^{\circ}01'47''E$, 966.69 feet to the South line of said addition; thence along said South line $S88^{\circ}58'13''W$ 455.00 feet to the POINT OF BEGINNING.

Platted easements and building setbacks within the above described property are hereby vacated and replatted by virtue of K.S.A. 12-512(b).

I hereby certify that the details of this plat are correct to the best of my knowledge and belief this 21st day of July, 2003.

Gregory J. Allison
 Gregory J. Allison, PE, LS #1257
 MKEC Engineering Consultants, Inc.
 411 North Webb Road
 Wichita, Kansas 67206

Know all men by these presents that we the undersigned property owners of the land above set forth in the Registered Land Surveyor's Certificate, have caused the same to be surveyed and platted into Lots, a Block, Reserves, and a Street, the same to be known as "WILSON FARMS FOURTH ADDITION" an addition to Wichita, Sedgwick County, Kansas. Streets are hereby dedicated to and for the use of the public. Easements for the construction and maintenance of public utilities and drainage, as indicated on the accompanying plat are hereby granted to the public. Reserves "A", "B", "C", "D", and "E" are platted for irrigation, landscaping, berming, and open space. Reserves "A", "B", "C" and "D" are platted for monuments. Reserves "A", "C", and "E" are platted for utilities in designated areas, as well as, drainage. Reserve "D" is platted for public parking. The Reserves shall be owned and maintained by the homeowner's association; provided, however, that the undersigned, or the homeowners association, as the undersigned's successor in interest, may, in their discretion, deed a parcel of a Reserve to an owner or owners of an adjacent lot, subject to the obligation to maintain such deeded parcel of a Reserve in compliance with the provisions hereof and in compliance with the maintenance covenants of any applicable restrictive covenant. A drainage plan has been developed for this plat and all drainage easements, right-of-way, or reserves shall remain at established grades or as modified with the approval of the applicable City or County Engineer, and unobstructed to allow for the conveyance of storm water. This plat shall conform to CUP DP-260.

WILSON RESIDENTIAL COMPANY L.L.C., a Kansas limited liability company

Rob Ramsay
 Rob Ramsay, Manager

STATE OF KANSAS, SEDGWICK COUNTY) ss.
 This instrument was acknowledged before me on 21st day of July, 2003, by Rob Ramsay, Manager, Wilson Residential Company L.L.C., a Kansas limited liability company.

IN WITNESS WHEREOF, I have hereunto set my hand and affixed my official seal, the day and year last above written.
 My Term Expires: 9-15-05

This plat of "WILSON FARMS FOURTH ADDITION" has been submitted to and approved by the Wichita-Sedgwick County Metropolitan Area Planning Commission, Wichita, Kansas.
 Dated this ___ day of ___, 2003.

WICHITA-SEDGWICK COUNTY METROPOLITAN PLANNING COMMISSION

Chair
 Bernard A. Hentzen, Chair
 Secretary
 John L. Schlegel, Secretary

This plat approved and all dedications shown thereon, if any, accepted by the City Council of the City of Wichita, Kansas, this ___ day of ___, 2003.

At the direction of the City Council.
 Mayor
 Carlos Mayans, Mayor
 City Clerk
 Pat Graves, City Clerk
 County Clerk
 Don Brace, County Clerk

STATE OF KANSAS, SEDGWICK COUNTY) ss.
 This is to certify that this instrument was filed for record in the Register of Deeds office this ___ day of ___, 2003 at ___ o'clock M; and is duly recorded.

Register of Deeds
 Bill Meek, Register of Deeds
 Deputy
 Linda Kizzire, Deputy

Reviewed in accordance with K.S.A. 58-2005 on this ___ day of ___, 2003.

Deputy County Surveyor
 Tricia L. Robello, LS #1246
 Deputy County Surveyor
 Sedgwick County, Kansas

