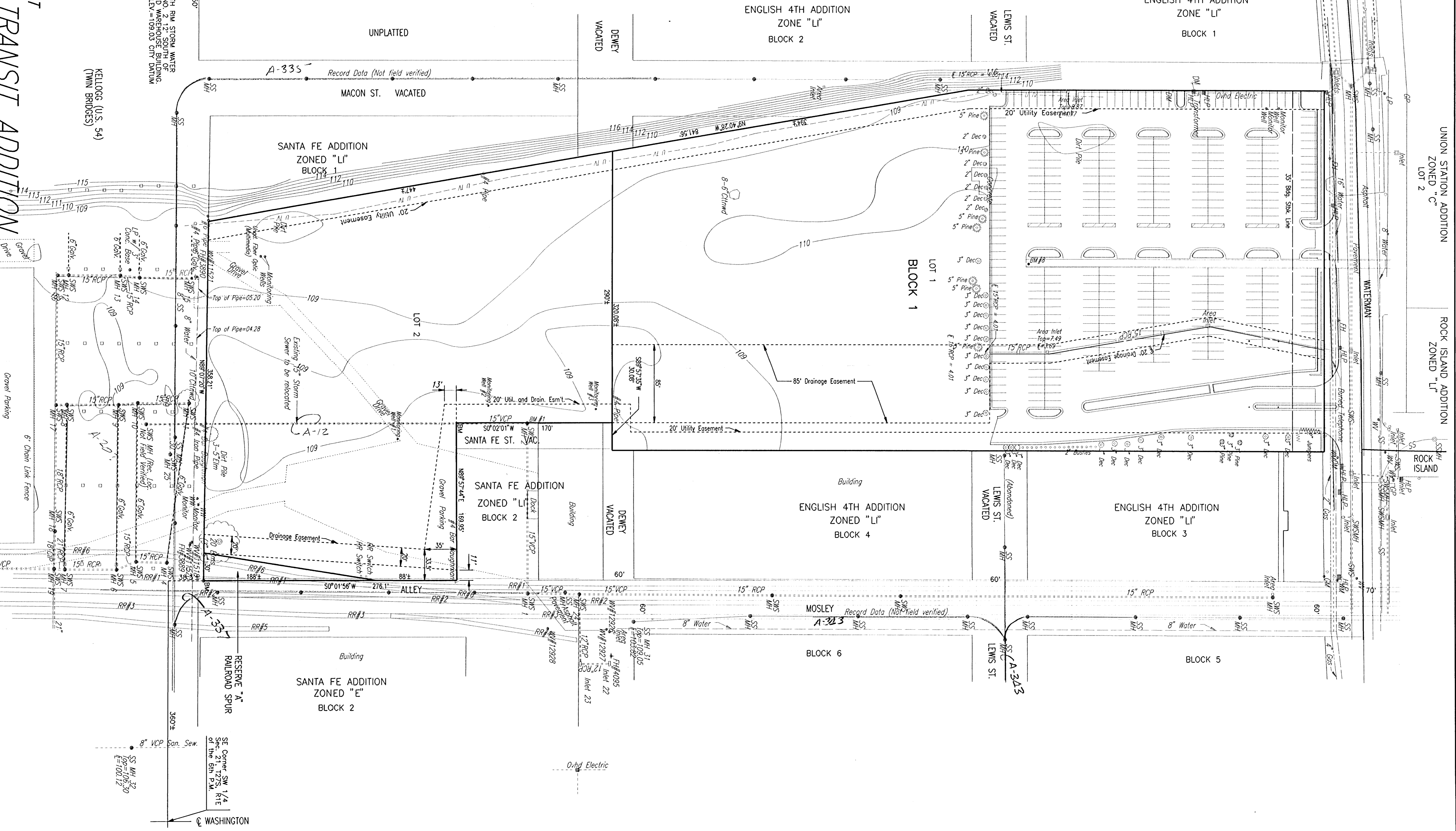
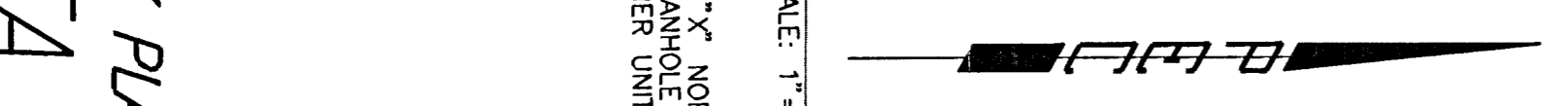


PRELIMINARY PLAT  
**WICHITA TRANSIT ADDITION**  
OWNER: CITY OF WICHITA c/o DAN GROHN  
8TH FLOOR, CITY HALL  
455 N. MAIN  
WICHITA, KANSAS 67202  
ENGINEER: PROFESSIONAL ENGINEERING CONSULTANTS, P.A.  
303 S. TOPEKA  
WICHITA, KANSAS 67202

B.M. #1 - CHISELED "X" NORTH RIM STORM WATER  
SEWER MANHOLE NO. 2 1/2 SOUTH OF  
SW CORNER UNITED WAREHOUSE BUILDING  
ELEV. = 109.03 CITY DATUM  
TOPO SURVEY 1993

SCALE: 1"=50'  
KELLOGG (U.S. 54)  
(TWIN BRIDGES)



SE Corner SW 1/4  
Sec. 21 in T2S, R1E  
of the 8th P.M.  
8" VCP San. Sew.  
SS MH 37  
OP 109.50  
E 710.12

WASHINGTON