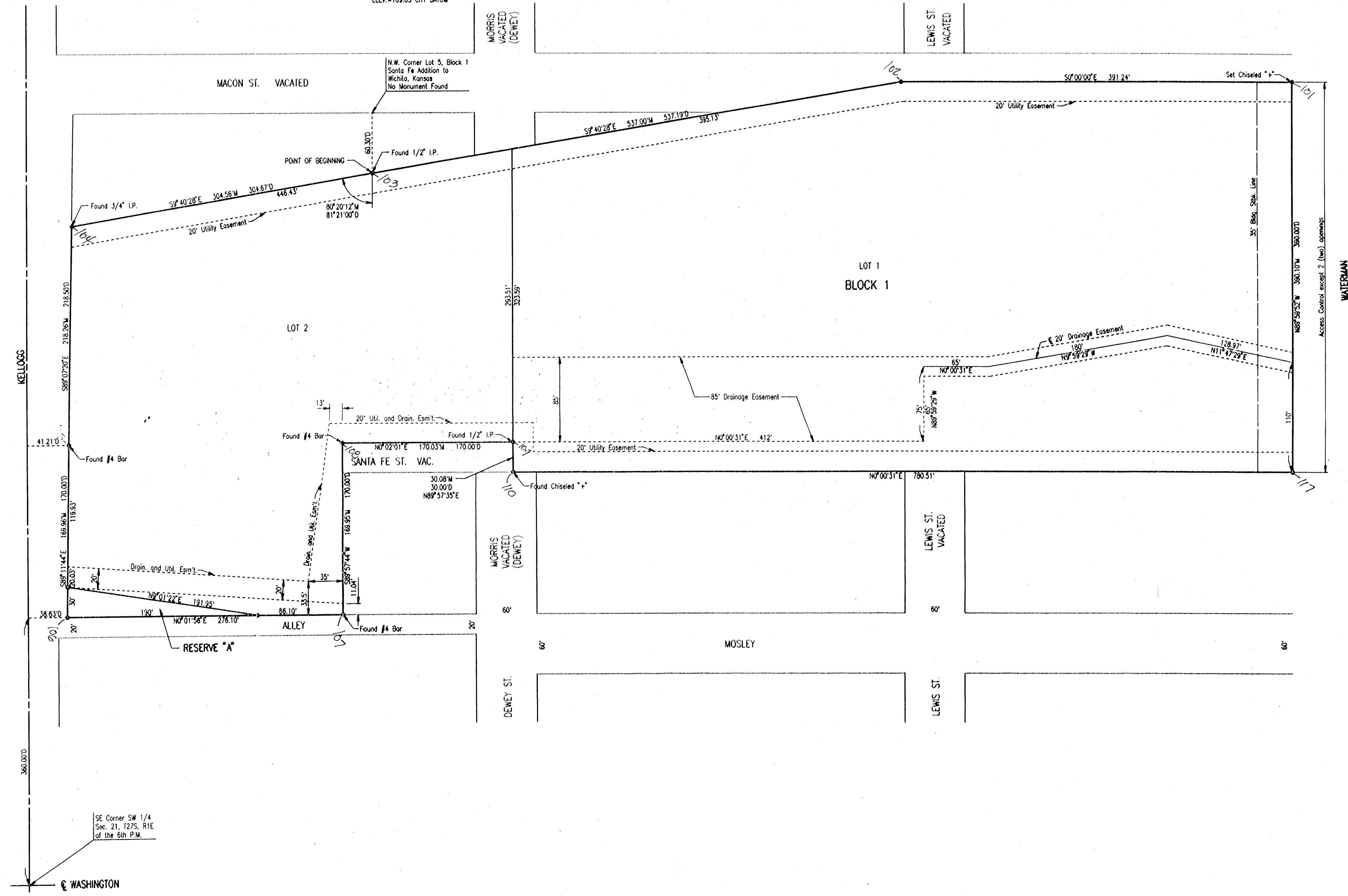


# WICHITA TRANSIT ADDITION TO WICHITA, SEDGWICK COUNTY, KANSAS

SCALE: 1"=50'  
M = MEASURED DISTANCE  
D = DEED DISTANCE  
● = IRON SET (UNLESS OTHERWISE NOTED)

B.M. #1 - CHISELED "X" NORTH RIM STORM WATER SEWER MANHOLE,  
12' SOUTH OF S.W. CORNER UNITED WAREHOUSE BUILDING  
AND 353' NORTH AND 169' WEST OF THE S.E. CORNER  
OF THE PLAT. ELEV.=109.03 CITY DATUM

B.M. #2 - CHISELED "D" IN CENTER OF STORM SEWER MANHOLE 18'  
SOUTH AND 192' WEST OF THE S.E. CORNER OF THE PLAT.  
ELEV.=109.03 CITY DATUM



DSNR: SANCHEZ OPER. DEP. SCALE: 1"=50.00  
G:\1996\96846\FINAL\_09-15-1998 10:56:13 am