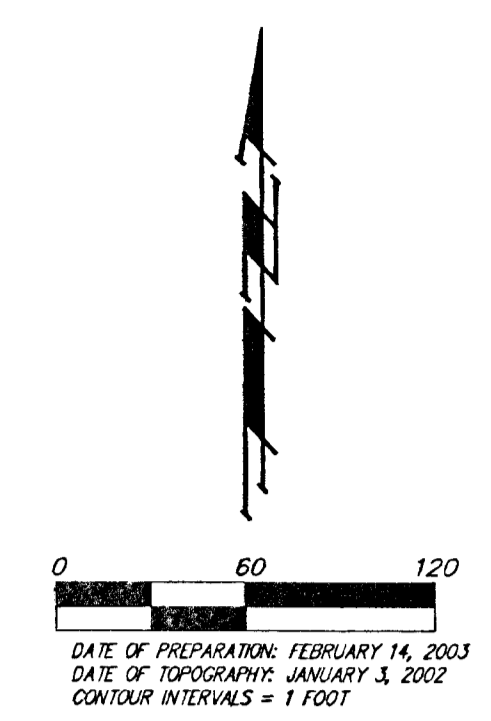
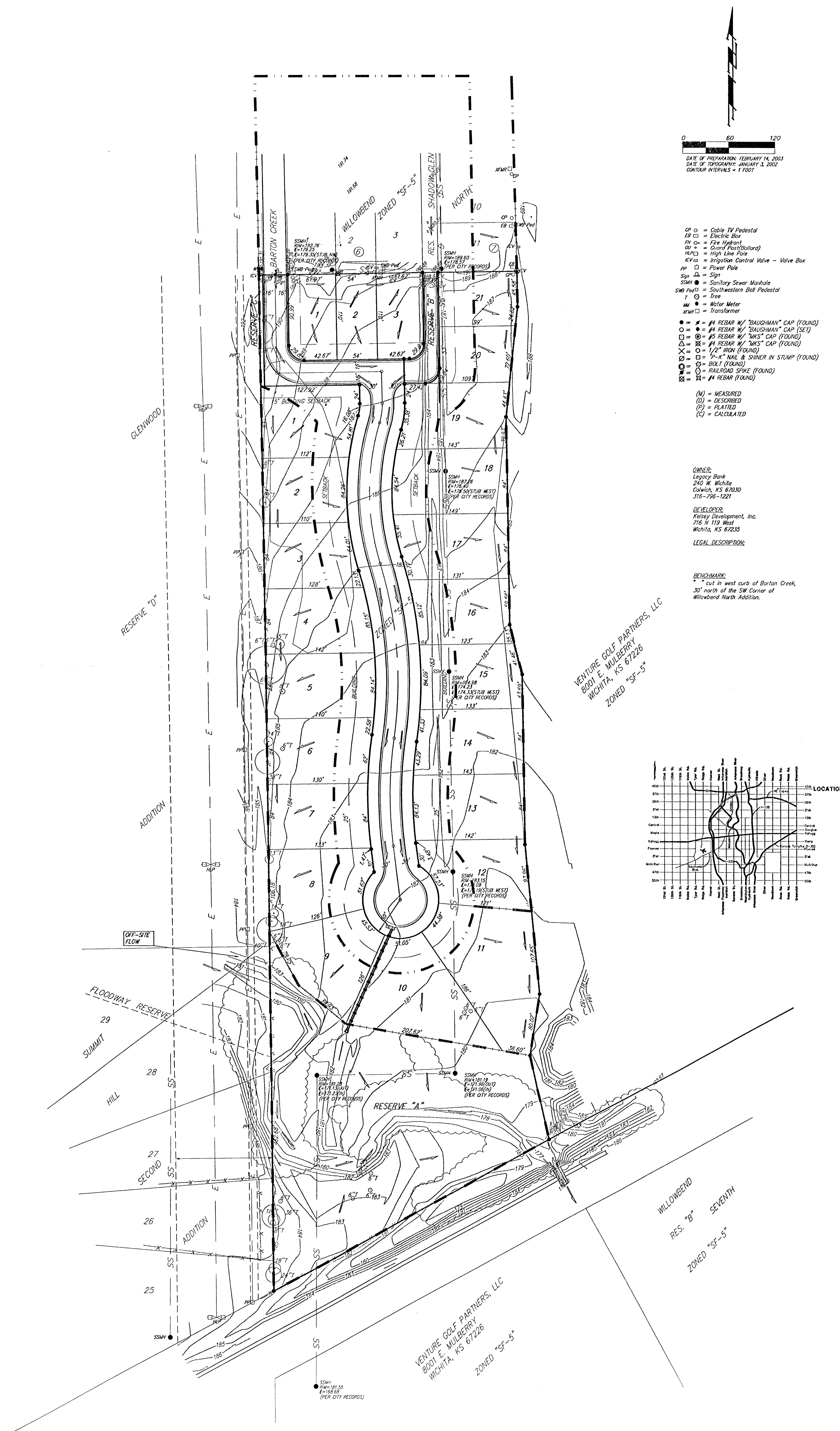


DRAINAGE CONCEPT WILLOWBEND NORTH ESTATES 2ND ADDITION WICHITA, SEDGWICK COUNTY, KANSAS



- OP = Cable TV Pedestal
 - EB = Electric Box
 - PH = Fire Hydrant
 - GP = Ground Pipe (Ballard)
 - HPL = High Line Pole
 - KV = Irrigation Control Valve - Valve Box
 - PP = Power Pole
 - SP = Sign
 - SSM = Sanitary Sewer Manhole
 - SWP = Southwestern Bell Pedestal
 - T = Tree
 - WM = Water Meter
 - TR = Transformer
 - = #4 REBAR W/ "BAUGHMAN" CAP (FOUND)
 - = #4 REBAR W/ "BAUGHMAN" CAP (SET)
 - ⊙ = #5 REBAR W/ "KKS" CAP (FOUND)
 - ⊚ = #5 REBAR W/ "KKS" CAP (SET)
 - ⊛ = #1 REBAR W/ "KKS" CAP (FOUND)
 - ⊜ = #1 REBAR W/ "KKS" CAP (SET)
 - ⊝ = 1/2" ROD (FOUND)
 - ⊞ = 7/8" NAIL & SHIVER IN STUMP (FOUND)
 - ⊟ = BOLT (FOUND)
 - ⊠ = RAILROAD SPIKE (FOUND)
 - ⊡ = #1 REBAR (FOUND)
- (M) = MEASURED
(D) = DESCRIBED
(P) = PLATED
(C) = CALCULATED

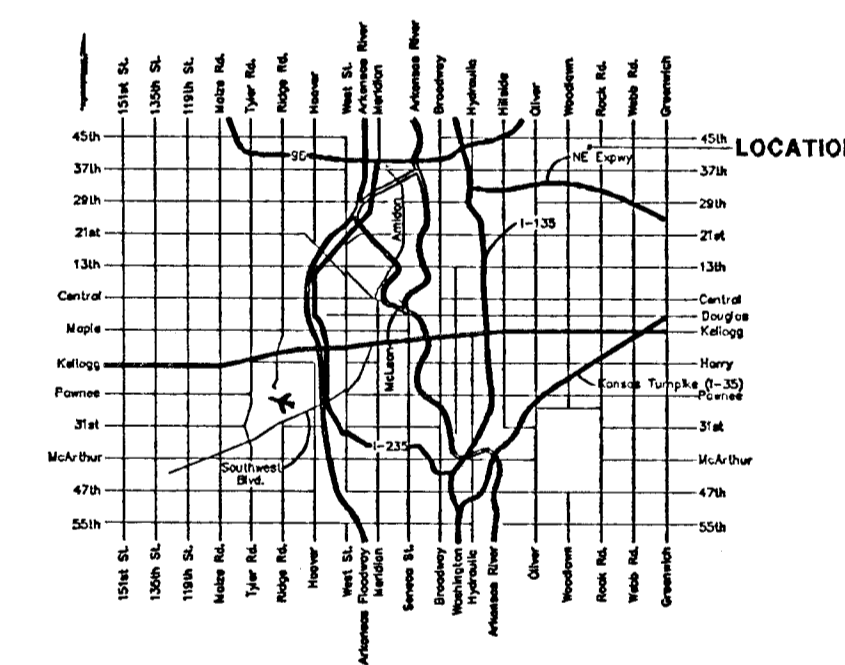
OWNER:
Legacy Bank
240 W. Wichita
Wichita, KS 67202
316-796-1221

DEVELOPER:
Hobby Development, Inc.
716 N. 113 West
Wichita, KS 67226

LEGAL DESCRIPTION:

BENCHMARK:
+ = cut in west curb of Barton Creek,
30' north of the SW Corner of
Willowbend North Addition.

VENTURE GOLF PARTNERS, LLC
8001 E. MULBERRY
WICHITA, KS 67226
ZONED "SF-5"



VENTURE GOLF PARTNERS, LLC
8001 E. MULBERRY
WICHITA, KS 67226
ZONED "SF-5"