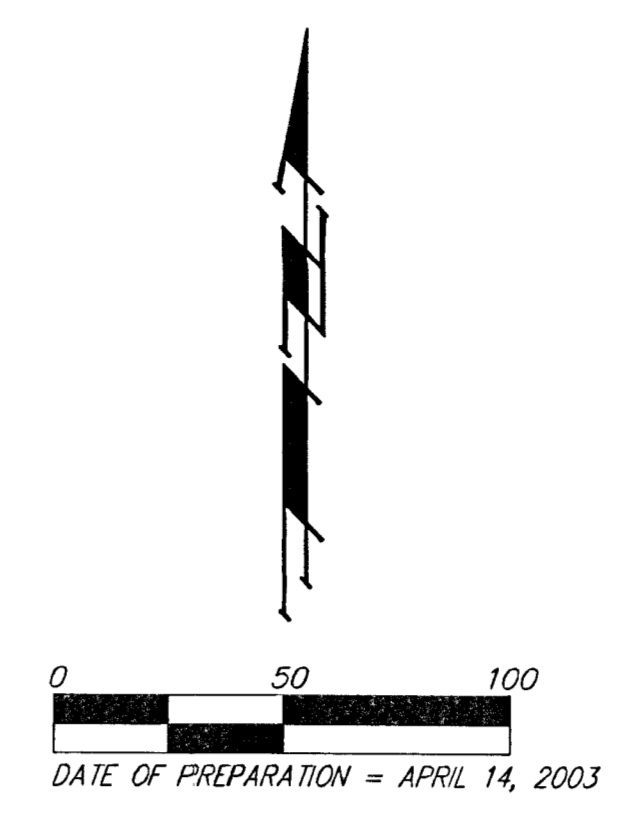
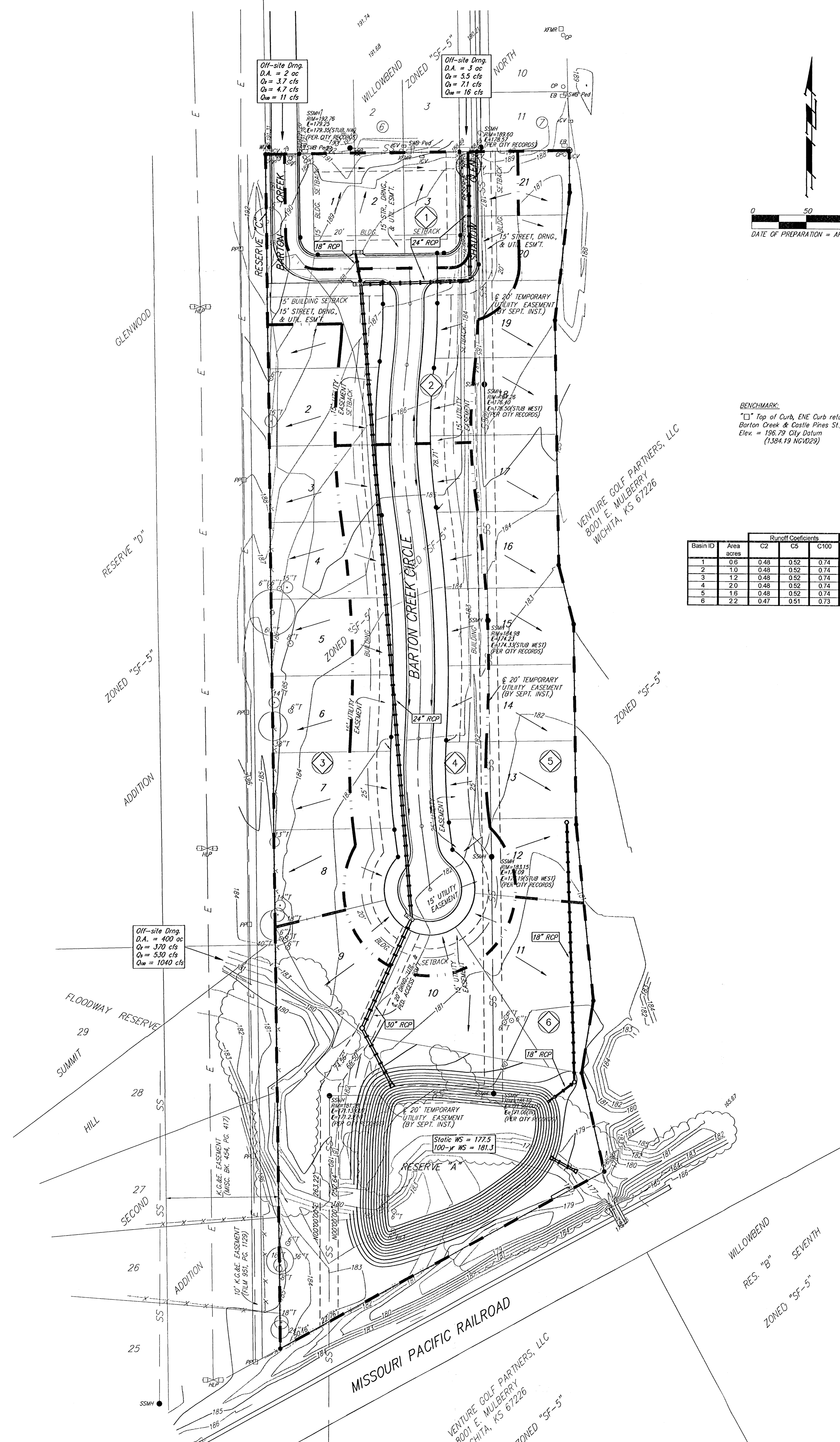


DRAINAGE PLAN

WILLOWBEND NORTH ESTATES 2ND ADDITION

WICHITA, SEDGWICK COUNTY, KANSAS



BENCHMARK:
 "□" Top of Curb, ENE Curb return,
 Barton Creek & Castle Pines St.,
 Elev. = 196.79 City Datum
 (1384.19 NGVD29)

Basin ID	Area acres	Runoff Coefficients			Peak Flowrates		
		C2	C5	C100	Q2 cfs	Q5 cfs	Q100 cfs
1	0.6	0.48	0.52	0.74	1.1	1.4	3
2	1.0	0.48	0.52	0.74	1.8	2.4	5.5
3	1.2	0.48	0.52	0.74	2.2	2.8	7
4	2.0	0.48	0.52	0.74	3.7	5	11
5	1.8	0.48	0.52	0.74	2.9	3.8	9
6	2.2	0.47	0.51	0.73	4.0	5.1	12

VENTURE GOLF PARTNERS, LLC
 8001 E. MULBERRY
 WICHITA, KS 67226