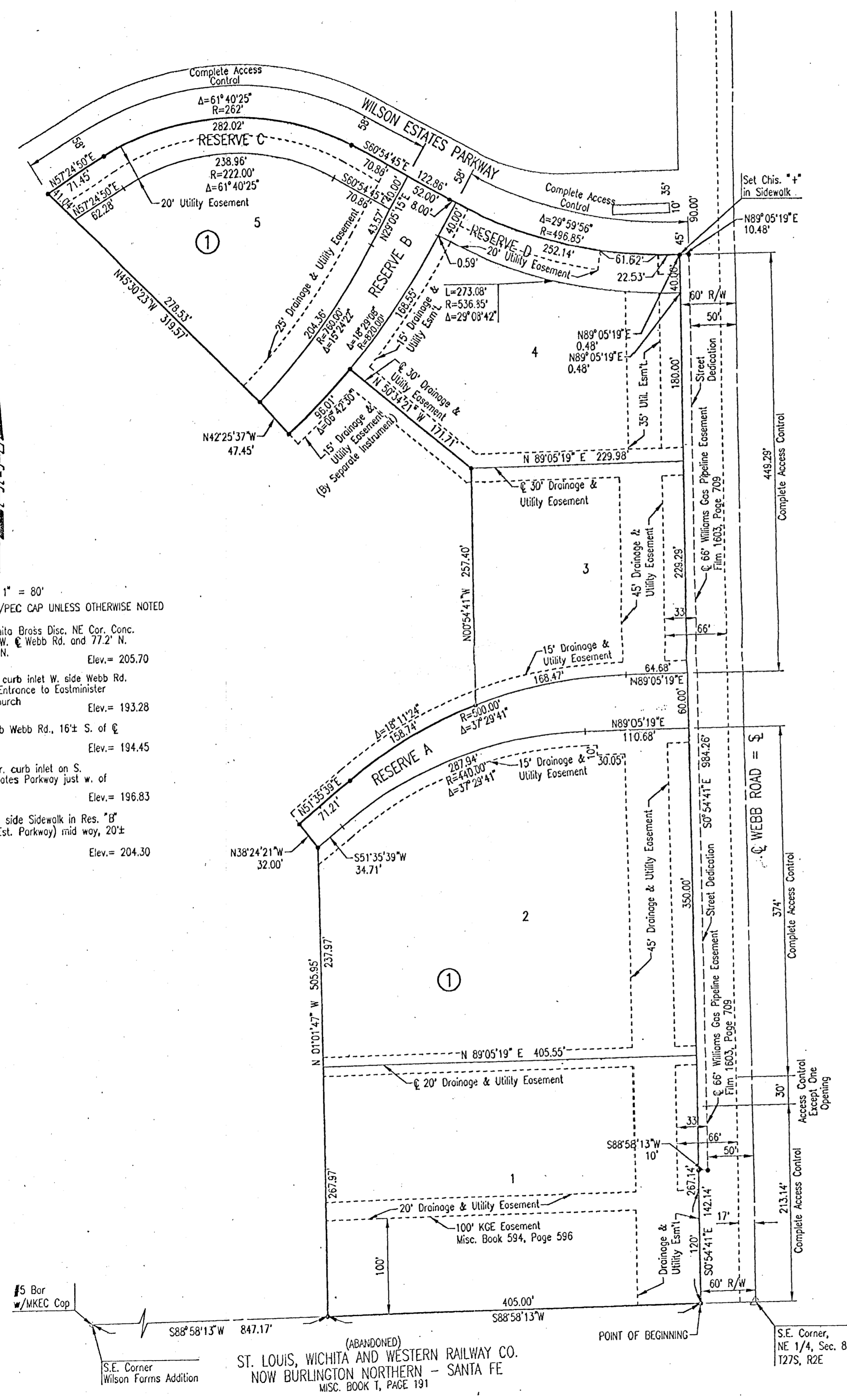


WILSON ESTATES MEDICAL PARK

AN ADDITION TO WICHITA, SEDGWICK COUNTY, KANSAS



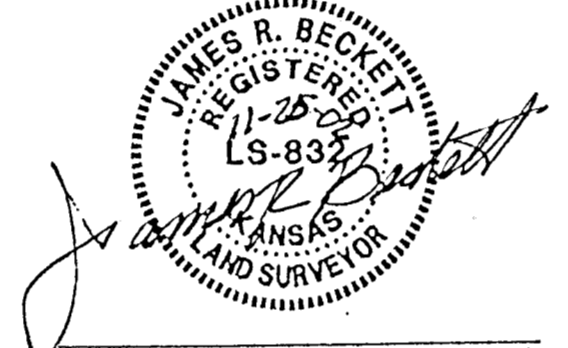
SCALE: 1" = 80'
• = 3/4" IRON PIPE W/PEC CAP UNLESS OTHERWISE NOTED
C.O.W. BM: City of Wichita Brass Disc. NE Cor. Conc. Vault 415' W. Webb Rd. and 77.2' N. @ 21st St. N. Elev. = 205.70
BM #1: "d" Top center curb inlet W. side Webb Rd. 66 1/2' N. of Entrance to Eastminster Presbyterian Church Elev. = 193.28
BM #2: "d" Top W. curb Webb Rd. 16 1/2' S. of E. of R.R. Tracks Elev. = 194.45
BM #3: Chiseled "d" ctr. curb inlet on S. side Wilson Estates Parkway just w. of Webb Rd. Elev. = 196.83
BM #5: Chiseled "d" N. side Sidewalk in Res. "B" (S. of Wilson Est. Parkway) mid way, 20'± W. of P.C. Elev. = 204.30

STATE OF KANSAS }
COUNTY OF SEDGWICK } SS

WE, PROFESSIONAL ENGINEERING CONSULTANTS, P.A., ENGINEERS AND SURVEYORS IN AFORESAID STATE AND COUNTY, DO HEREBY CERTIFY THAT ON THIS 23rd DAY OF DECEMBER, 2002, WE HAVE SURVEYED AND PLATTED WILSON ESTATES MEDICAL PARK, AN ADDITION TO WICHITA, SEDGWICK COUNTY, KANSAS, INTO LOTS, A BLOCK, AND RESERVES, THE SAME BEING A REPEAT OF AND DESCRIBED AS FOLLOWS:

A PORTION OF LOT 1, BLOCK 2 AND RESERVE "B", LEGACY PARK WILSON ESTATES ADDITION TO WICHITA, SEDGWICK COUNTY, KANSAS, DESCRIBED AS FOLLOWS:
BEGINNING AT THE S.E. CORNER OF SAID LOT 1, THENCE BEARING S88°58'13"W ALONG THE SOUTH LINE OF SAID LOT 1, A DISTANCE OF 405.00 FEET; THENCE BEARING N01°14'47"W A DISTANCE OF 505.95 FEET; THENCE BEARING N38°24'21"W A DISTANCE OF 32.00 FEET; THENCE BEARING N51°35'39"E A DISTANCE OF 71.21 FEET TO THE P.C. OF A CURVE TO THE RIGHT, HAVING A RADIUS OF 500.00 FEET; THENCE ALONG SAID CURVE THROUGH A CENTRAL ANGLE OF 18°11'24", AN ARC DISTANCE OF 158.74 FEET; THENCE BEARING N02°54'41"W A DISTANCE OF 257.40 FEET; THENCE BEARING N50°34'22"W A DISTANCE OF 171.21 FEET TO A POINT ON A CURVE TO THE RIGHT, HAVING A RADIUS OF 820.00 FEET AND CHORD BEARING S44°13'07"W; THENCE ALONG SAID CURVE THROUGH A CENTRAL ANGLE OF 6°42'30" AN ARC DISTANCE OF 96.01 FEET; THENCE BEARING N42°25'37"W A DISTANCE OF 47.45 FEET; THENCE BEARING N45°30'23"W A DISTANCE OF 319.57 FEET TO A POINT ON THE NORTH LINE OF RESERVE "B"; THENCE BEARING N57°24'50"E ALONG THE NORTH LINE OF RESERVE "B" A DISTANCE OF 71.45 FEET TO THE P.C. OF A CURVE TO THE RIGHT, HAVING A RADIUS OF 262.00 FEET; THENCE ALONG SAID CURVE THROUGH A CENTRAL ANGLE OF 61°40'25", AN ARC DISTANCE OF 122.86 FEET TO THE P.C. OF A CURVE TO THE LEFT, HAVING A RADIUS OF 498.85 FEET; THENCE ALONG SAID CURVE THROUGH A CENTRAL ANGLE OF 29°59'59" AN ARC DISTANCE OF 250.14 FEET; THENCE BEARING N50°51'19"E A DISTANCE OF 10.48 FEET TO THE N.E. CORNER OF RESERVE "B"; THENCE BEARING S00°54'41"E ALONG THE EAST LINE OF RESERVE "B" AND SAID LOT 1 A DISTANCE OF 584.26 FEET; THENCE BEARING S88°58'13"W A DISTANCE OF 10.00 FEET; THENCE BEARING S00°54'41"E A DISTANCE OF 142.14 FEET TO THE POINT OF BEGINNING.

ALL PUBLIC EASEMENTS LYING WITHIN THE ABOVE DESCRIBED TRACT OF LAND ARE HEREBY VACATED AND REPLATED BY VIRTUE OF KSA 12-512(b) AMENDED.



KNOW ALL MEN BY THESE PRESENTS THAT WE, THE UNDERSIGNED PROPERTY OWNERS OF THE LAND AS ABOVE SET FORTH IN THE SURVEYOR'S CERTIFICATE, HAVE CAUSED THE LAND TO BE SURVEYED AND PLATTED INTO LOTS, A BLOCK, AND RESERVES, THE SAME TO BE KNOWN AS WILSON ESTATES MEDICAL PARK, AN ADDITION TO WICHITA, SEDGWICK COUNTY, KANSAS.

THIS ADDITION IS SUBJECT TO THE CONDITIONS OF WILSON ESTATES MEDICAL PARK COMMUNITY UNIT PLAN (DP-260).

FOR ADDITIONAL INFORMATION AND BUILDING SETBACK LINES SEE C.U.P. DP-260 ON FILE AT THE WICHITA-SEDGWICK COUNTY METROPOLITAN AREA PLANNING DEPARTMENT, WICHITA, KANSAS.

THE STREET DEDICATION ALONG WEBB ROAD IS HEREBY DEDICATED TO AND FOR THE USE OF THE PUBLIC.

THE PRIVATE STREET IN RESERVES "A" AND "B" ARE HEREBY PLATTED FOR THE USE OF LOTS 1 THROUGH 5, BLOCK 1.

ALL ABUTTERS' RIGHT OF ACCESS TO AND FROM WEBB ROAD AND WILSON ESTATES PARKWAY OVER AND ACROSS THE EAST AND NORTH LINES OF BLOCK 1 ARE HEREBY GRANTED TO THE CITY OF WICHITA. PROVIDED HOWEVER THAT BLOCK 1 SHALL HAVE ACCESS TO WILSON ESTATES PARKWAY AT ONE LOCATION AS SHOWN, AND SHALL ALSO HAVE ACCESS TO WEBB ROAD AT TWO LOCATIONS AS SHOWN.

EASEMENTS FOR THE CONSTRUCTION AND MAINTENANCE OF PUBLIC UTILITIES ARE HEREBY GRANTED.

RESERVES "A" AND "B" ARE HEREBY PLATTED FOR PRIVATE DRIVE, DRAINAGE, LANDSCAPING, SIGNAGE AND UTILITIES. RESERVES "C" AND "D" ARE HEREBY PLATTED FOR LANDSCAPING, SIGNAGE, DRAINAGE, UTILITIES AND SIDEWALKS. RESERVES "A" THROUGH "D" SHALL BE OWNED AND MAINTAINED BY AN OWNERS ASSOCIATION TO BE FORMED WITHIN WILSON ESTATES MEDICAL PARK.

A DRAINAGE PLAN HAS BEEN APPROVED FOR THIS PLAT. ALL DRAINAGE EASEMENTS AND RIGHTS-OF-WAY SHALL REMAIN AT ESTABLISHED GRADES AND UNOBSERVED TO ALLOW FOR THE CONVEYANCE OF STORM WATER, UNLESS MODIFIED WITH THE APPROVAL OF THE CITY ENGINEER.

OWNER:
WILSON RESIDENTIAL COMPANY, L.L.C.
G.E. Laham
GEORGE E. LAHAM, II, PRESIDENT

VISION PARTNERS, L.L.C.
G.E. Laham
GEORGE E. LAHAM, II, MANAGER

WILSON ESTATES MEDICAL PARK MASTER OWNER'S ASSOCIATION
G.E. Laham
GEORGE E. LAHAM, II, PRESIDENT

ORAL & MAXILLOFACIAL PROPERTIES, LLC
Kenneth W. Nelson
KENNETH W. NELSON, MEMBER
John D. Gagnon
JOHN D. GAGNON, MEMBER

MOELLER REAL ESTATE COMPANY, LLC
Christopher A. Moeller
CHRISTOPHER A. MOELLER, MEMBER

STATE OF KANSAS }
COUNTY OF SEDGWICK } SS

THIS INSTRUMENT WAS ACKNOWLEDGED BEFORE ME ON THIS 3rd DAY OF December, 2002, BY GEORGE E. LAHAM, II, PRESIDENT OF WILSON RESIDENTIAL COMPANY, L.L.C.

Mary A. Farrar
MARY A. FARRAR
NOTARY PUBLIC
MY APPOINTMENT EXPIRES: 2/27/04

STATE OF KANSAS }
COUNTY OF SEDGWICK } SS

THIS INSTRUMENT WAS ACKNOWLEDGED BEFORE ME ON THIS 3rd DAY OF December, 2002, BY GEORGE E. LAHAM, II, MANAGER OF VISION PARTNERS, L.L.C.

Mary A. Farrar
MARY A. FARRAR
NOTARY PUBLIC
MY APPOINTMENT EXPIRES: 2/27/04

STATE OF KANSAS }
COUNTY OF SEDGWICK } SS

THIS INSTRUMENT WAS ACKNOWLEDGED BEFORE ME ON THIS 3rd DAY OF December, 2002, BY KENNETH W. NELSON, MEMBER OF ORAL & MAXILLOFACIAL PROPERTIES, LLC.

Mary A. Farrar
MARY A. FARRAR
NOTARY PUBLIC
MY APPOINTMENT EXPIRES: 2/27/04

STATE OF KANSAS }
COUNTY OF SEDGWICK } SS

THIS INSTRUMENT WAS ACKNOWLEDGED BEFORE ME ON THIS 3rd DAY OF December, 2002, BY JOHN D. GAGNON, MEMBER OF ORAL & MAXILLOFACIAL PROPERTIES, LLC.

Mary A. Farrar
MARY A. FARRAR
NOTARY PUBLIC
MY APPOINTMENT EXPIRES: 2/27/04

STATE OF KANSAS }
COUNTY OF SEDGWICK } SS

THIS INSTRUMENT WAS ACKNOWLEDGED BEFORE ME ON THIS 3rd DAY OF December, 2002, BY CHRISTOPHER A. MOELLER, MEMBER OF MOELLER REAL ESTATE COMPANY, L.L.C.

Mary A. Farrar
MARY A. FARRAR
NOTARY PUBLIC
MY APPOINTMENT EXPIRES: 2/27/04

WE, TRUST BANK, N.A., HOLDER OF A MORTGAGE ON THE ABOVE DESCRIBED PROPERTY, DO HEREBY CONSENT TO THE PLATING OF WILSON ESTATES MEDICAL PARK, AN ADDITION TO WICHITA, SEDGWICK COUNTY, KANSAS.
Gary D. Schmitt
GARY D. SCHMITT, SENIOR VICE PRESIDENT.

STATE OF KANSAS }
COUNTY OF SEDGWICK } SS

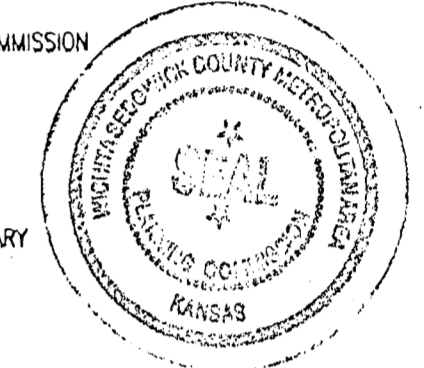
THIS INSTRUMENT WAS ACKNOWLEDGED BEFORE ME ON THIS 26th DAY OF November, 2002, BY GARY D. SCHMITT, SENIOR VICE PRESIDENT OF TRUST BANK, N.A.

Michele C. Baker
MICHELE C. BAKER
NOTARY PUBLIC
MY APPOINTMENT EXPIRES: 4.17.04

THIS PLAT OF WILSON ESTATES MEDICAL PARK HAS BEEN SUBMITTED TO AND APPROVED BY THE WICHITA-SEDGWICK COUNTY METROPOLITAN AREA PLANNING COMMISSION, WICHITA, KANSAS.

DATED THIS 7th DAY OF November, 2002.

WICHITA-SEDGWICK COUNTY METROPOLITAN AREA PLANNING COMMISSION
Bernard A. Henzler
BERNARD A. HENZLER, CHAIR
Dale Miller
DALE MILLER, SECRETARY



REVIEWED IN ACCORDANCE WITH K.S.A. 17-2001 ON THIS 9th DAY OF December, 2002.

Tricia L. Rogello
TRICIA L. ROGELLO, LS #1216
DEPUTY COUNTY SURVEYOR
SEDGWICK COUNTY KANSAS

THIS PLAT IS APPROVED AND ALL DEDICATIONS SHOWN HEREON, IF ANY ARE ACCEPTED BY THE CITY COUNCIL OF THE CITY OF WICHITA, KANSAS, THIS 17th DAY OF December, 2002.

AT THE DIRECTION OF THE CITY COUNCIL
Chris Chieriches
CHRIS CHIERICHES, CITY MANAGER
Pat Graves
PAT GRAVES, CITY CLERK



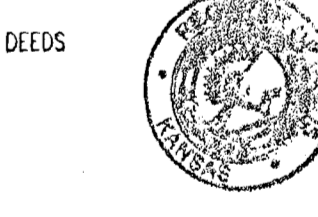
ENTERED ON TRANSFER RECORD THIS 8th DAY OF January, 2003.

Don Brace
DON BRACE, COUNTY CLERK



THIS IS TO CERTIFY THAT THIS INSTRUMENT WAS FILED FOR RECORD IN THE REGISTER OF DEEDS OFFICE AT 1:02 PM, ON THE 8th DAY OF January, 2003.

Bill Meek
BILL MEER, REGISTER OF DEEDS
Linda Kizzire
LINDA KIZZIRE, DEPUTY



STATE OF KANSAS }
COUNTY OF SEDGWICK } SS

THIS INSTRUMENT WAS ACKNOWLEDGED BEFORE ME ON THIS 3rd DAY OF January, 2003, BY GEORGE E. LAHAM, II, PRESIDENT OF WILSON ESTATES MEDICAL PARK MASTER OWNER'S ASSOCIATION.

Dawn A. Truman
DAWN A. TRUMAN
NOTARY PUBLIC
MY APPOINTMENT EXPIRES: November 1, 2004

