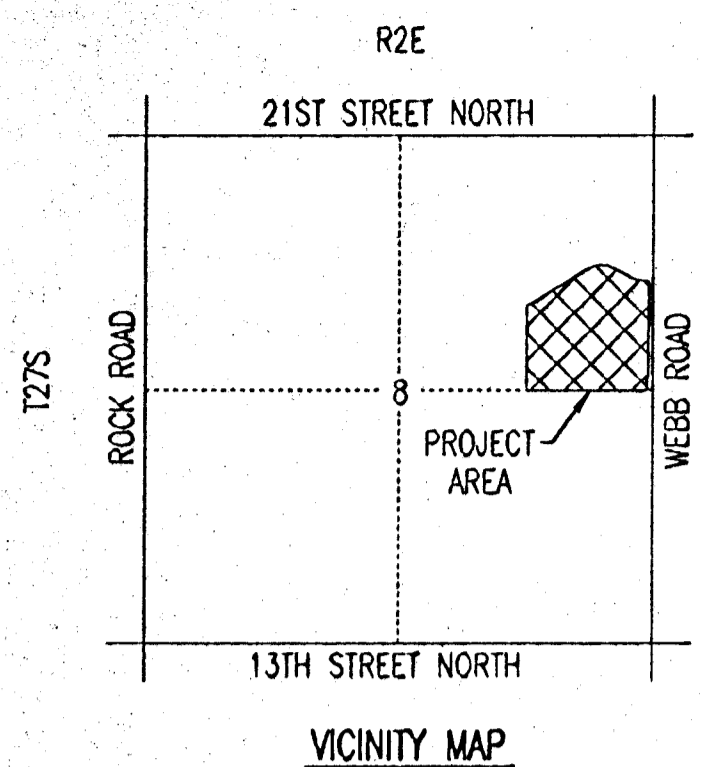


# WILSON ESTATES MEDICAL PARK

## AN ADDITION TO WICHITA, SEDGWICK COUNTY, KANSAS

### PRELIMINARY PLAT



SCALE: 1" = 80'

- = SET 3/4" IRON PIPE W/PEC CAP UNLESS OTHERWISE NOTED
- = FOUND 3/4" IRON PIPE W/PEC CAP UNLESS OTHERWISE NOTED

C.O.W. BM: City of Wichita Brass Disc, NE Cor. Conc. Vault 415' W. & Webb Rd. and 77.2' N. of 21st St. N. Elev.= 205.70

BM #1: "d" Top center curb inlet W. side Webb Rd. 66± N. of Entrance to Eastminster Presbyterian Church Elev.= 193.28

BM #2: "d" Top W. curb Webb Rd., 16± S. of E. of R.R. Tracks Elev.= 194.45

BM #3: Chiseled "d" ctr. curb inlet on S. side Wilson Estates Parkway just W. of Webb Rd. Elev.= 196.83

BM #4: Chiseled "d" T/C. S. curb Wilson Estates Parkway, adjacent to NW Cor. Lot 1, Block 2, Legacy Park Wilson Estates Add. Elev.= 196.41

BM #5: Chiseled "d" N. side Sidewalk in Res. "f" (S. of Wilson Est. Parkway) mid way, 20± W. of P.C. Elev.= 204.30

BM #6: B.M. Spike in N. face N. Pole - 2 pole KGE Structure on S. side Lot midway Elev.= 200.32

BM #7: R.R. Spike in N. face N. pole - 2 pole KGE Structure just N.W. of S.W. cor. Lot 1, Block 2, Legacy Park Wilson Estates Addition. Elev.= 200.70

STATE OF KANSAS }  
COUNTY OF SEDGWICK } SS

WE, PROFESSIONAL ENGINEERING CONSULTANTS, P.A., ENGINEERS AND SURVEYORS IN AFORESAID STATE AND COUNTY, DO HEREBY CERTIFY THAT OF THIS \_\_\_\_\_ DAY OF \_\_\_\_\_, 2002, WE HAVE SURVEYED AND PLATTED WILSON ESTATES MEDICAL PARK, AN ADDITION TO WICHITA, SEDGWICK COUNTY, KANSAS, INTO LOTS, A BLOCK, AND A RESERVE, THE SAME BEING DESCRIBED AS FOLLOWS:

A REPLAT OF LOT 1, BLOCK 2, AND RESERVE B, LEGACY PARK WILSON ESTATES ADDITION TO WICHITA, SEDGWICK COUNTY, KANSAS.

ALL PUBLIC EASEMENTS LYING WITHIN THE ABOVE DESCRIBED TRACT OF LAND ARE HEREBY VACATED AND REPLATTED BY VIRTUE OF KSA 12-512(c) AMENDED.

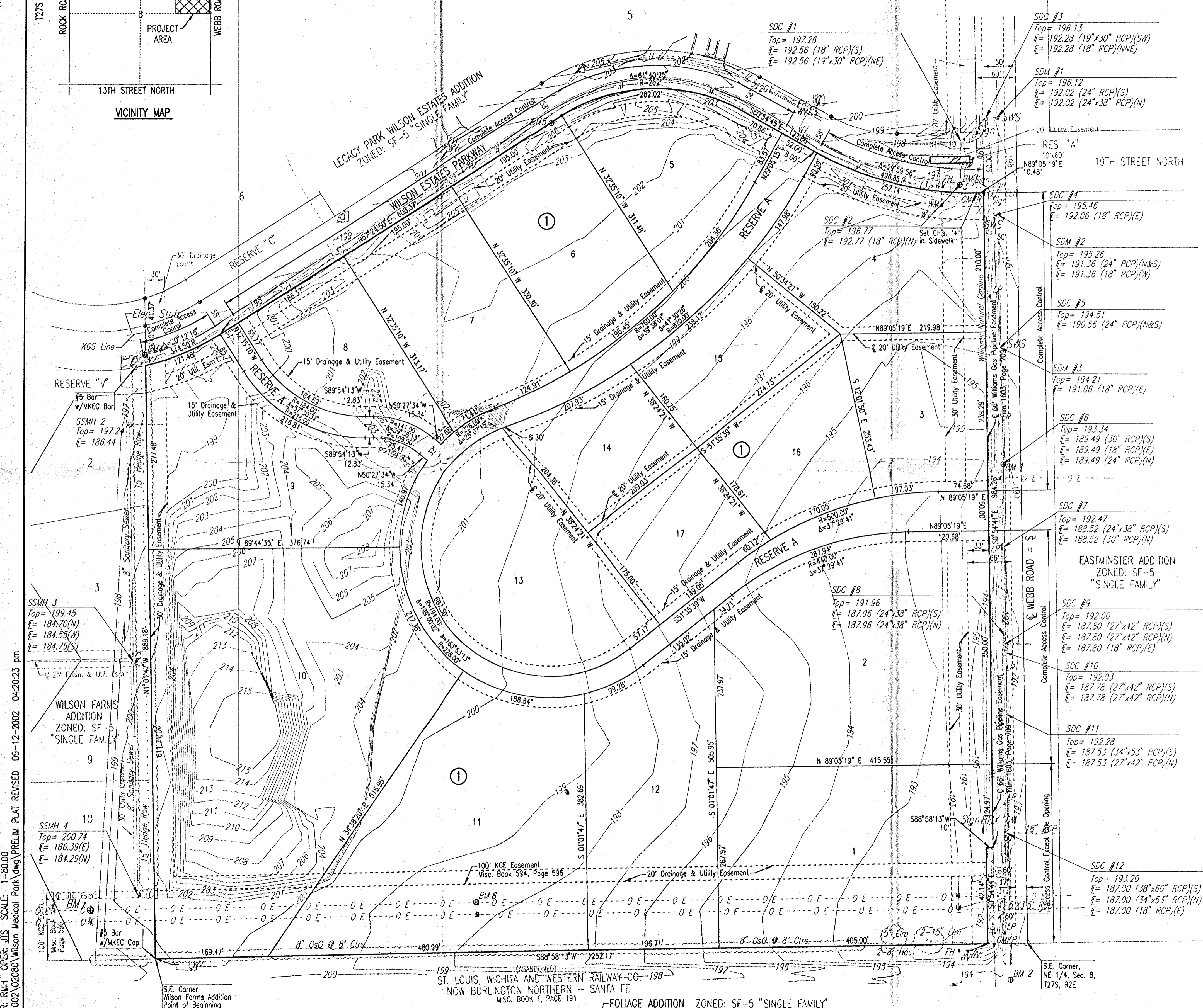
JAMES R. BECKETT, R.L.S. NO. 832  
PROFESSIONAL ENGINEERING CONSULTANTS, P.A.

KNOW ALL MEN BY THESE PRESENTS THAT WE, THE UNDERSIGNED PROPERTY OWNERS OF THE LAND AS ABOVE SET FORTH IN THE SURVEYOR'S CERTIFICATE, HAVE CAUSED THE LAND TO BE SURVEYED AND PLATTED INTO LOTS, A BLOCK, AND A RESERVE, THE SAME TO BE KNOWN AS WILSON ESTATES MEDICAL PARK, AN ADDITION TO WICHITA, SEDGWICK COUNTY, KANSAS.

EASEMENTS FOR THE CONSTRUCTION AND MAINTENANCE OF PUBLIC UTILITIES ARE HEREBY GRANTED.

RESERVE "A" IS HEREBY PLATTED FOR PRIVATE STREET, DRAINAGE, LANDSCAPING, MONUMENT SIGNS, AND UTILITIES. RESERVE "A" SHALL BE OWNED AND MAINTAINED BY AN OWNERS ASSOCIATION TO BE FORMED WITHIN WILSON ESTATES MEDICAL PARK.

A DRAINAGE PLAN HAS BEEN APPROVED FOR THIS PLAT. ALL DRAINAGE EASEMENTS AND RIGHTS-OF-WAY SHALL REMAIN AT ESTABLISHED GRADES AND UNOBSTRUCTED TO ALLOW FOR THE CONVEYANCE OF STORM WATER, UNLESS MODIFIED WITH THE APPROVAL OF THE CITY ENGINEER.



DSNR: RMH OPER JLS SCALE: 1"=80.00  
 Q:\2002\02080\Wilson Medical Park\dwg\PRELIM PLAT REVISED 09-12-2002 04:20:23 pm

S.E. Corner  
Wilson Farms Addition  
Point of Beginning

ST. LOUIS, WICHITA AND WESTERN RAILWAY CO. - SANTA FE  
NOW BURLINGTON NORTHERN - SANTA FE  
M.S.C. BOOK 1, PAGE 191

FOLIAGE ADDITION ZONED: SF-5 "SINGLE FAMILY"

S.E. Corner,  
NE 1/4, Sec. 8,  
127S, R2E