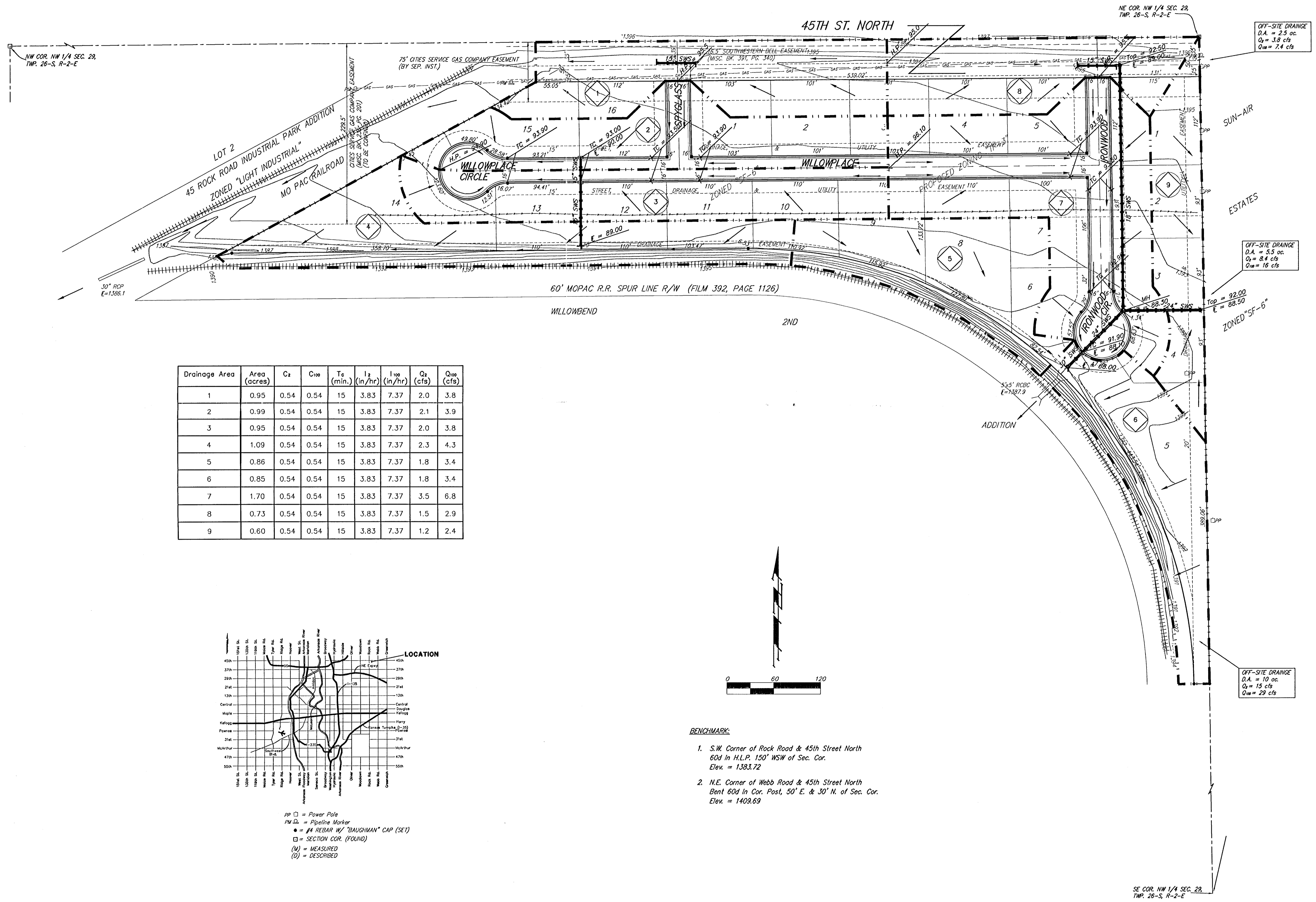


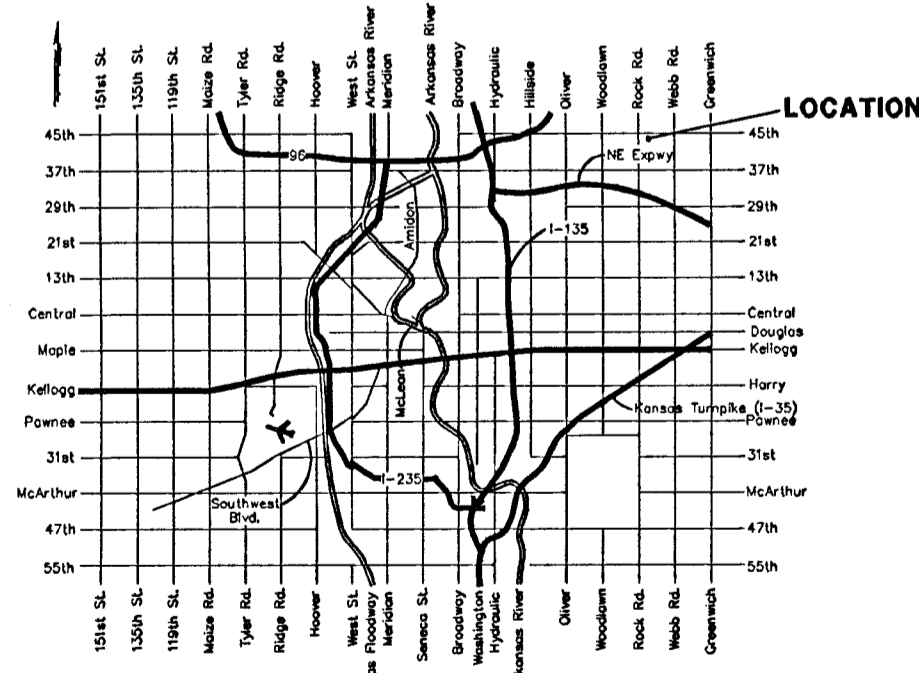
# DRAINAGE PLAN

## WILLOW PLACE

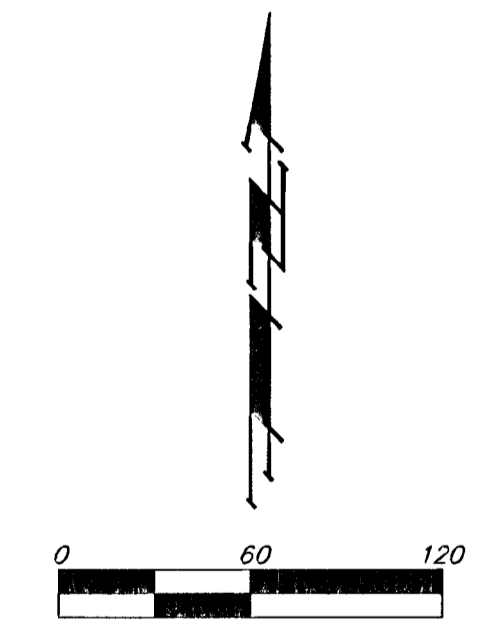
### AN ADDITION TO WICHITA, SEDGWICK COUNTY, KANSAS



Drainage Area	Area (acres)	C <sub>2</sub>	C <sub>100</sub>	T <sub>0</sub> (min.)	I <sub>2</sub> (in/hr)	I <sub>100</sub> (in/hr)	Q <sub>2</sub> (cfs)	Q <sub>100</sub> (cfs)
1	0.95	0.54	0.54	15	3.83	7.37	2.0	3.8
2	0.99	0.54	0.54	15	3.83	7.37	2.1	3.9
3	0.95	0.54	0.54	15	3.83	7.37	2.0	3.8
4	1.09	0.54	0.54	15	3.83	7.37	2.3	4.3
5	0.86	0.54	0.54	15	3.83	7.37	1.8	3.4
6	0.85	0.54	0.54	15	3.83	7.37	1.8	3.4
7	1.70	0.54	0.54	15	3.83	7.37	3.5	6.8
8	0.73	0.54	0.54	15	3.83	7.37	1.5	2.9
9	0.60	0.54	0.54	15	3.83	7.37	1.2	2.4



PP □ = Power Pole  
 PM □ = Pipeline Marker  
 ● = #4 REBAR W/ "BAUGHMAN" CAP (SET)  
 □ = SECTION COR. (FOUND)  
 (M) = MEASURED  
 (D) = DESCRIBED



- BENCHMARK.**
- S.W. Corner of Rock Road & 45th Street North  
60d In H.L.P. 150' WSW of Sec. Cor.  
Elev. = 1383.72
  - N.E. Corner of Webb Road & 45th Street North  
Bent 60d In Cor. Post, 50' E. & 30' N. of Sec. Cor.  
Elev. = 1409.69