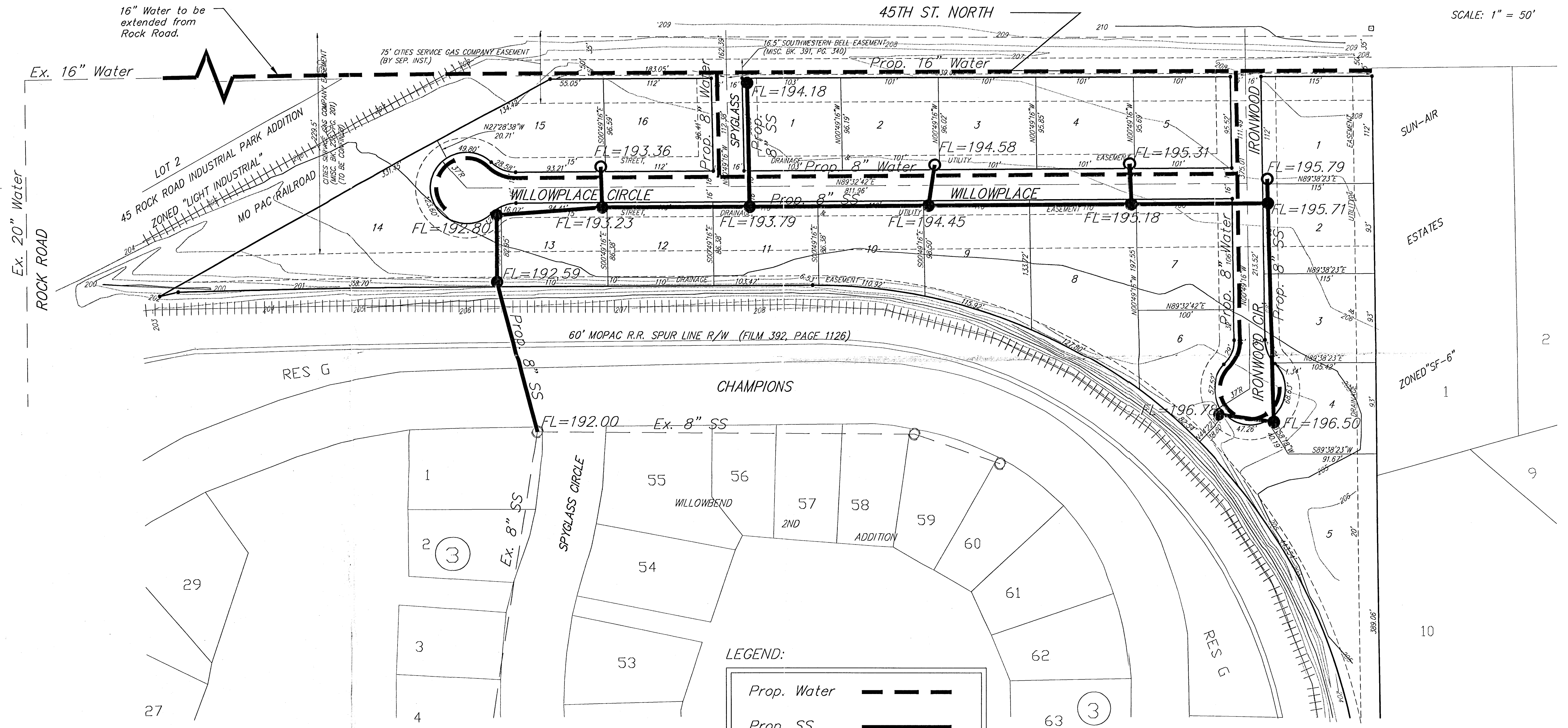
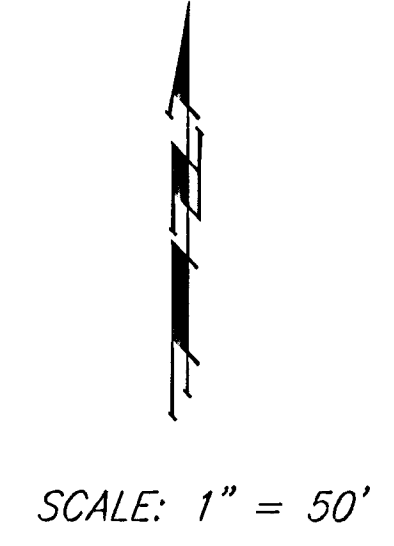


UTILITY PLAN

WILLOW PLACE

AN ADDITION TO WICHITA, SEDGWICK COUNTY, KANSAS



LEGEND:

Prop. Water	---
Prop. SS	—
Prop. SS MH	●
Prop. SS CO	○

**WILLOW PLACE
UTILITY PLAN**
WICHITA, KANSAS

BAUGHMAN COMPANY P.A.
ENGINEERING, SURVEYING, & PLANNING
318-262-7271 • 315 ELLIS • WICHITA, KANSAS 67211

PROJECT NUMBER				SHEET 1 OF 1	
DESIGN BP	DRAWN TMG	APPROVED	DATE 03-00	SCALE 1" = 50'	

Util/WillowUP