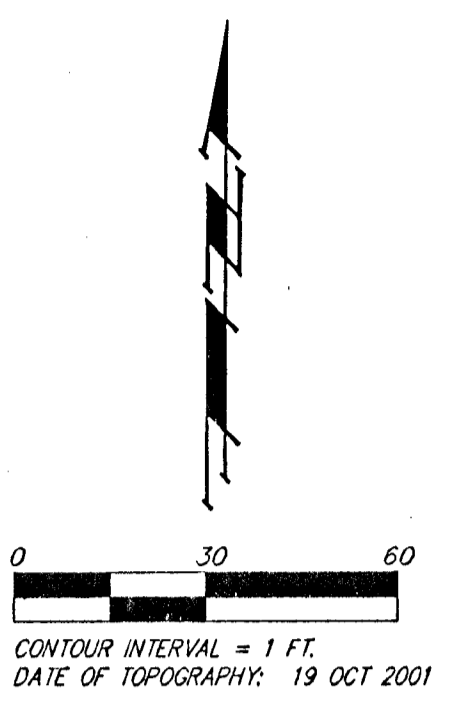
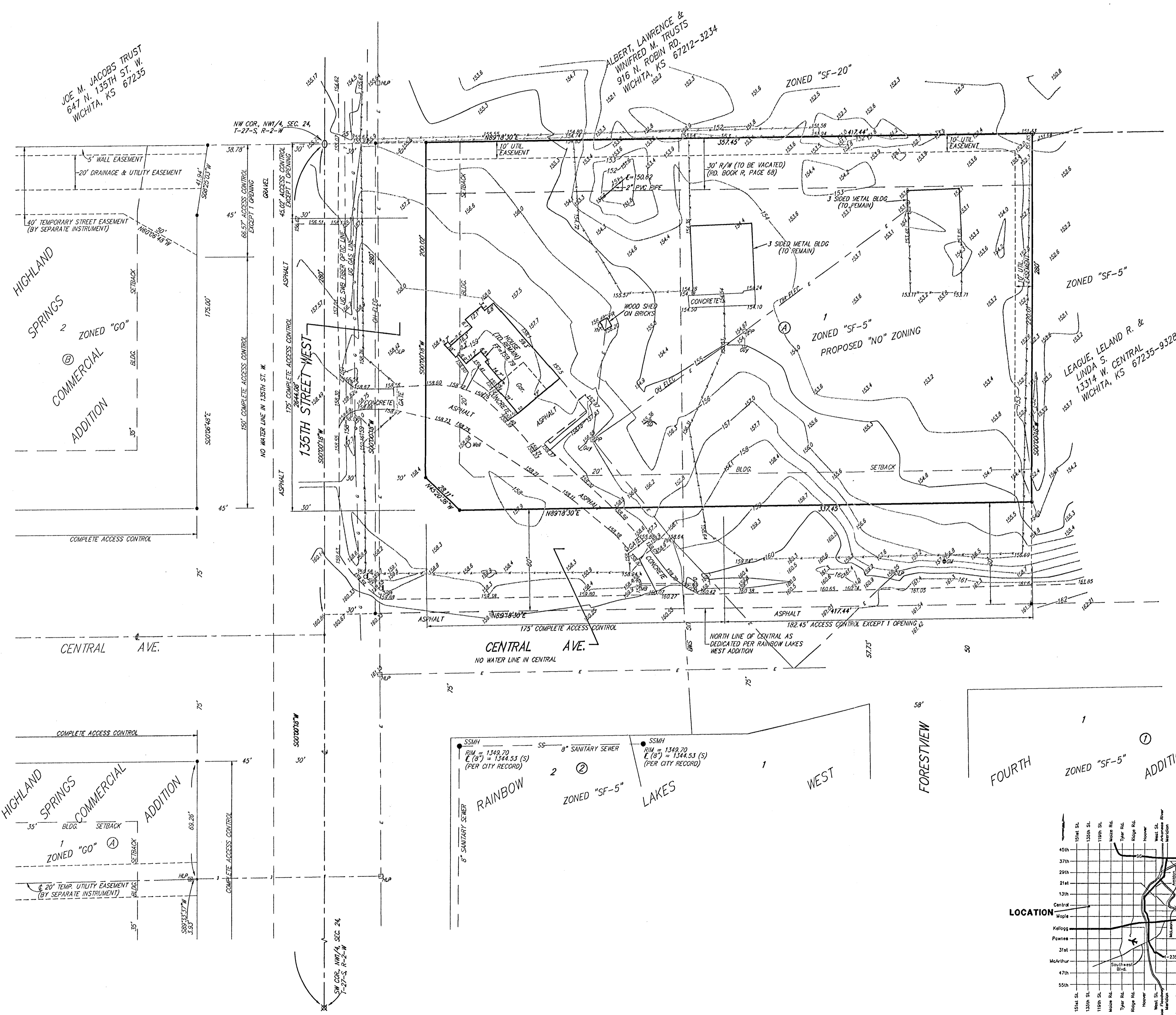


PRELIMINARY PLAT
ZEIGLER ADDITION
WICHITA, SEDGWICK COUNTY, KANSAS



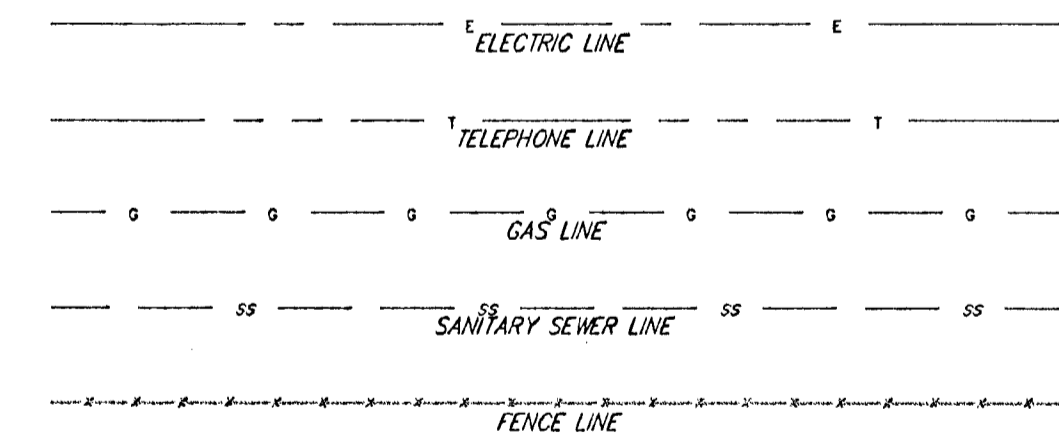
OWNER:
 KENNETH W. & ROYANN ZEIGLER
 13510 W. CENTRAL ST.
 WICHITA, KS 67235-9331
 PH. (316) 722-5197

LEGAL DESCRIPTION:
 THE NORTH 280 FEET OF THE WEST 208.71 FEET OF THE NW 1/4 OF SEC. 24, T1P. 27-S, R-2-W OF THE 6TH P.M., SEDGWICK COUNTY, KANSAS TOGETHER WITH A TRACT DESCRIBED AS FOLLOWS: BEGINNING 208.71 FEET EAST OF THE NW CORNER OF SAID NW 1/4; THENCE SOUTH PARALLEL WITH THE WEST LINE OF SAID NW 1/4, 280 FEET; THENCE EAST PARALLEL WITH THE NORTH LINE OF SAID NW 1/4, 208.71 FEET; THENCE NORTH TO A POINT ON THE NORTH LINE OF SAID NW 1/4, 208.71 FEET EAST OF THE POINT OF BEGINNING; THENCE WEST TO POINT OF BEGINNING.

BENCHMARK:
 CITY OF WICHITA BENCHMARK DISC,
 NE CORNER OF INTERSECTION
 32.60' N. OF E. CENTRAL EAST
 24.50' E. OF E. 135TH ST. W.
 ELEV. = 159.50 CITY DATUM
 (1546.90 NGVD)

- = #4 REBAR W/ "BAUGHMAN" CAP (SET)
- ⊗ = 3/4" IRON (FOUND)
- = 1/2" IRON (FOUND)
- = 1/2" IRON PIPE OVER STONE (FOUND)

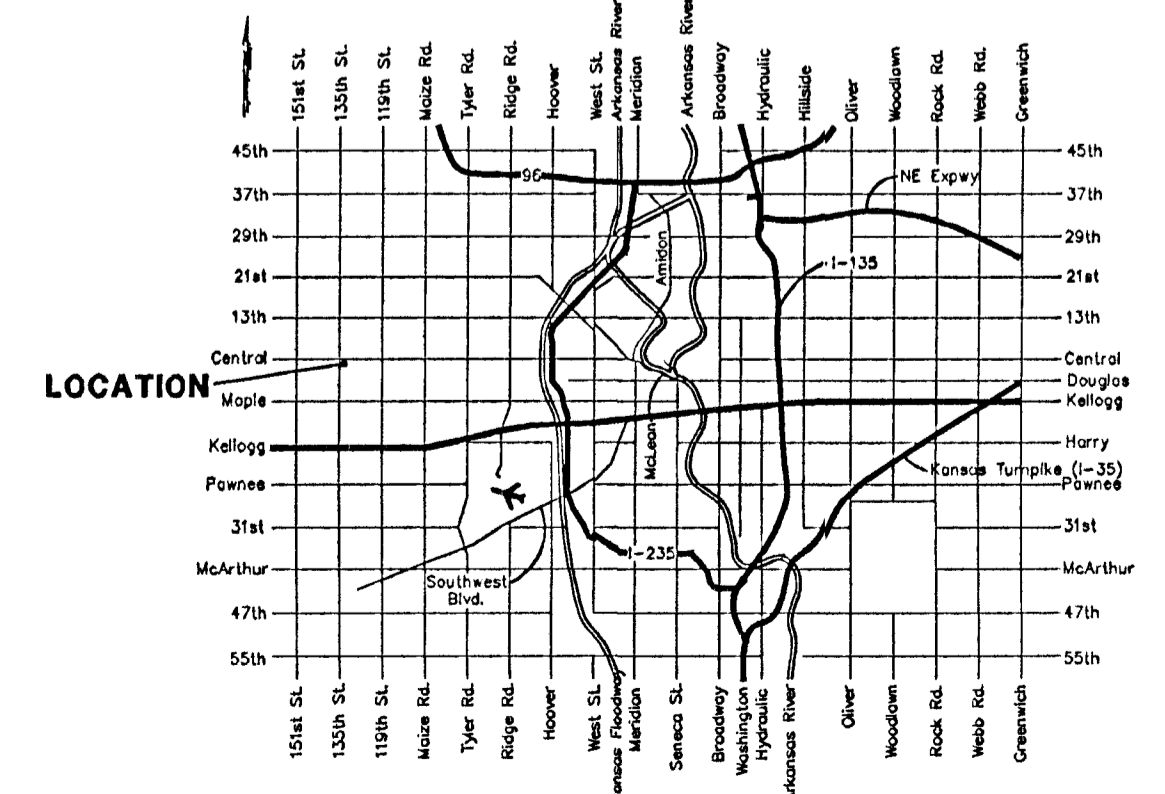
- GM = GAS METER
- GA = GUY ANCHOR
- HLP = HIGH LINE POLE
- LPO = LIGHT POLE
- MB = MAIL BOX
- PP = POWER POLE
- SD = SATELLITE DISH
- SP = SIGN
- HW = CASED WELL
- YH = YARD HYDRANT



NOTE:
 BLANKET EASEMENT GRANTED TO KANSAS GAS & ELECTRIC COMPANY (MISC. BOOK 128, PAGE 544); PARTIAL RELEASE (MISC. BOOK 418, PAGE 170).

BLANKET KANSAS GAS & ELECTRIC COMPANY EASEMENT (MISC. BOOK 636, PAGE 33).

BLANKET SOUTHWESTERN BELL TELEPHONE COMPANY (MISC. BOOK 870, PAGE 58).



VICINITY MAP

9 NOV 2001