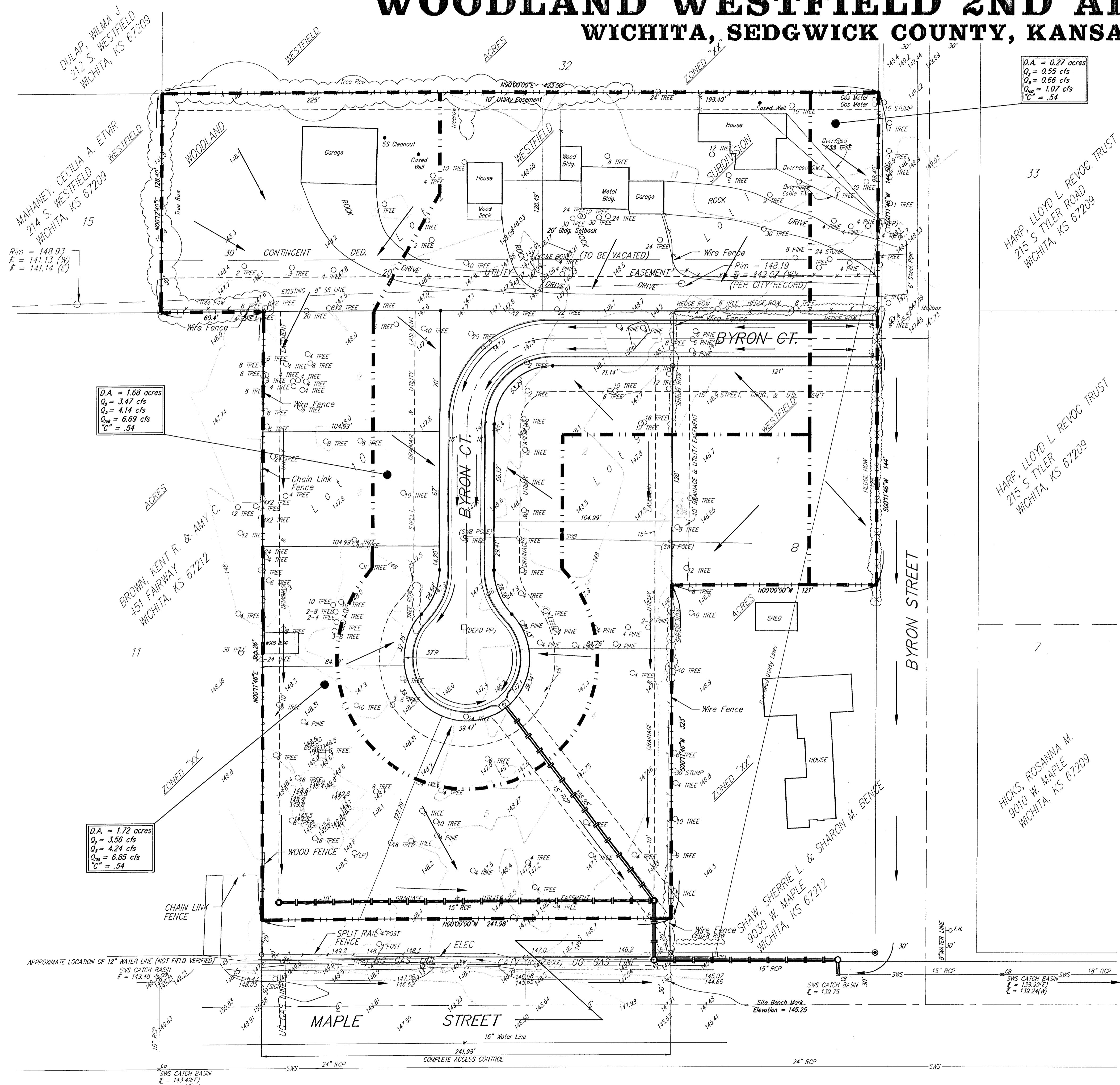


DRAINAGE CONCEPT

WOODLAND WESTFIELD 2ND ADDITION

WICHITA, SEDGWICK COUNTY, KANSAS



D.A. = 0.27 acres
 $Q_1 = 0.55$ cfs
 $Q_2 = 0.66$ cfs
 $Q_{100} = 1.07$ cfs
 $C = .54$

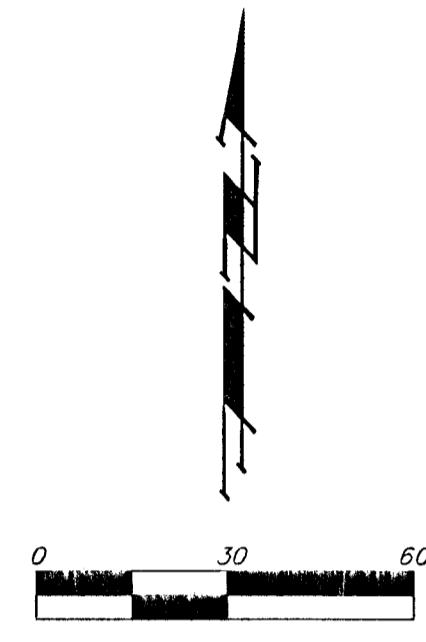
D.A. = 1.68 acres
 $Q_1 = 3.47$ cfs
 $Q_2 = 4.14$ cfs
 $Q_{100} = 6.69$ cfs
 $C = .54$

D.A. = 1.72 acres
 $Q_1 = 3.56$ cfs
 $Q_2 = 4.24$ cfs
 $Q_{100} = 6.85$ cfs
 $C = .54$

OWNER:
 HAROLD P. WOOD
 235 S. BYRON
 WICHITA, KS 67209

LEGAL DESCRIPTION:
 A REPLAT OF LOT 9, LOT 10, AND THE NORTH 160 FEET OF LOT 8, WESTFIELD ACRES, SEDGWICK COUNTY, KANSAS; TOGETHER WITH LOT 1 AND LOT 2, WOODLAND WESTFIELD SUBDIVISION, WICHITA, KANSAS.

BENCHMARK:
 CUT TOP OF CURB SOUTH OF SE COR. LOT 9, WESTFIELD ACRES ADD.
 ELEV. = 145.25 (CITY DATUM)



SCALE
 1" = 30'
 CONTOURS @ 1' INTERVALS

- LEGEND
- (PP) = POWER POLE
 - (KCB) = KCB BOX
 - (LP) = LIGHT POLE
 - (SBB) = SOUTHWESTERN BELL POLE
 - (CATV) = CABLE TELEVISION POLE
 - (SIGN) = SIGN
 - (FH) = FIRE HYDRANT
 - (CB) = SWS CATCH BASIN

= #4 REBAR W/ "BAUGHMAN" CAP (FOUND)
 * = #4 REBAR W/ "BAUGHMAN" CAP (SET)
 ⊗ = 3/4" IRON W/ "SHADLEWOOD" CAP (FOUND)
 ⊗ = 3/4" IRON (FOUND)
 ○ = 1/2" IRON (FOUND)
 NOTE: STORM WATER SEWER LOCATION PER CITY RECORD.