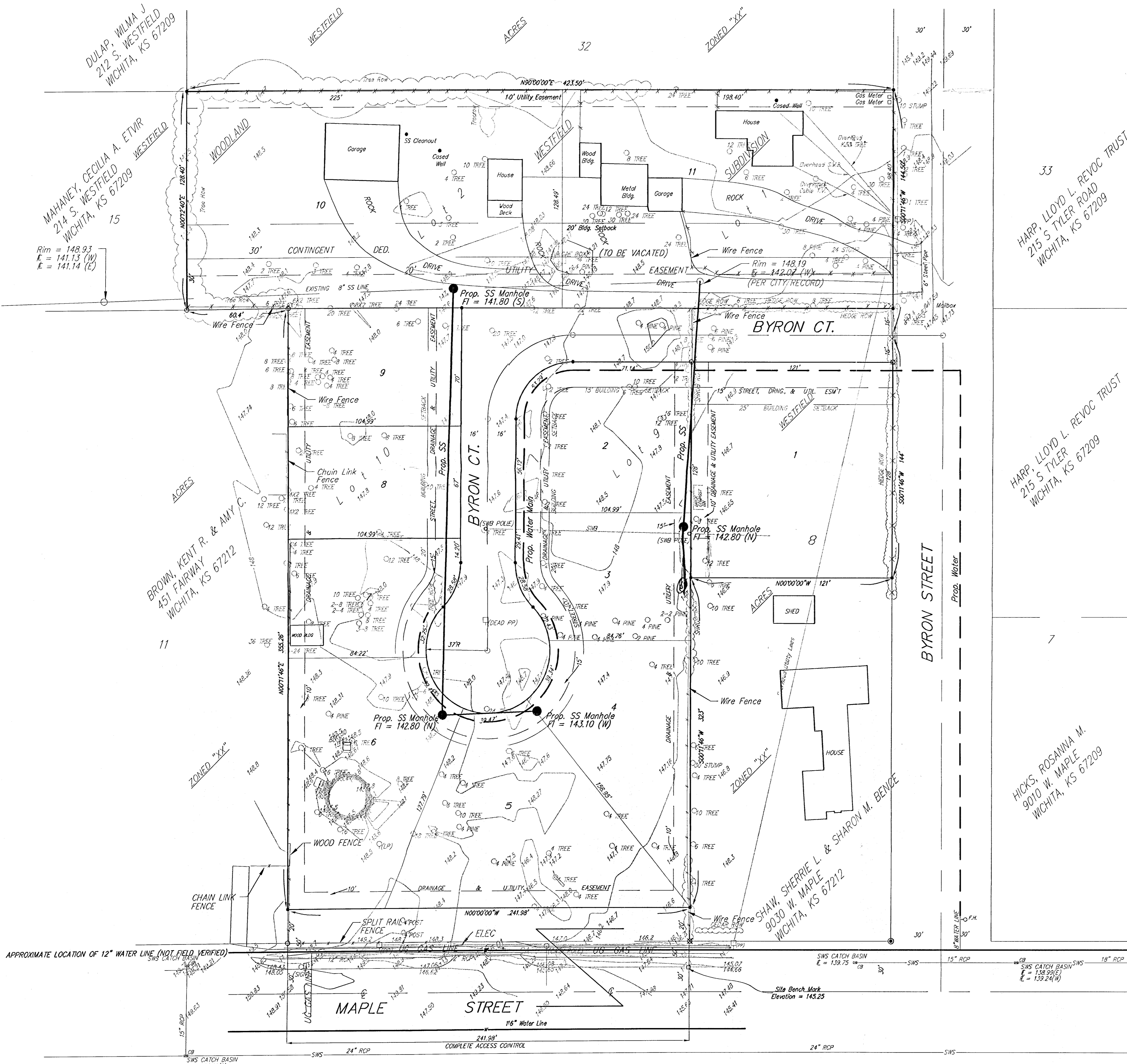


# UTILITY PLAN

## WOODLAND WESTFIELD 2ND ADDITION

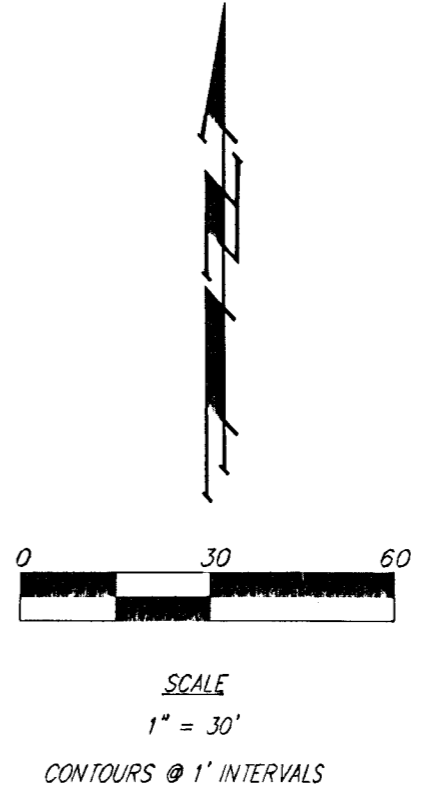
### WICHITA, SEDGWICK COUNTY, KANSAS



**OWNER:**  
 HAROLD P. WOOD  
 235 S. BYRON  
 WICHITA, KS 67209

**LEGAL DESCRIPTION:**  
 A REPLAT OF LOT 9, LOT 10, AND THE NORTH 160 FEET OF LOT 8, WESTFIELD ACRES, SEDGWICK COUNTY, KANSAS; TOGETHER WITH LOT 1 AND LOT 2, WOODLAND WESTFIELD SUBDIVISION, WICHITA, KANSAS.

**BENCHMARK:**  
 [Symbol] CUT TOP OF CURB SOUTH OF SE COR. LOT 9, WESTFIELD ACRES ADD.  
 ELEV.=145.25 (CITY DATUM)



- LEGEND**
- [Symbol] = POWER POLE
  - [Symbol] = CORE BOX
  - [Symbol] = LIGHT POLE
  - [Symbol] = SOUTHWESTERN BELL POLE
  - [Symbol] = CABLE TELEVISION POLE
  - [Symbol] = SIGN
  - [Symbol] = FIRE HYDRANT
  - [Symbol] = SWS CATCH BASIN

\* = #4 REBAR W/ "BAUGHMAN" CAP (FOUND)  
 ● = #4 REBAR W/ "BAUGHMAN" CAP (SET)  
 ○ = 3/4" IRON W/ "SANDLEWOOD" CAP (FOUND)  
 ⊗ = 3/4" IRON (FOUND)  
 ○ = 1/2" IRON (FOUND)

NOTE: STORM WATER SEWER LOCATION PER CITY RECORD

--- Prop. Water  
 --- Prop. SS