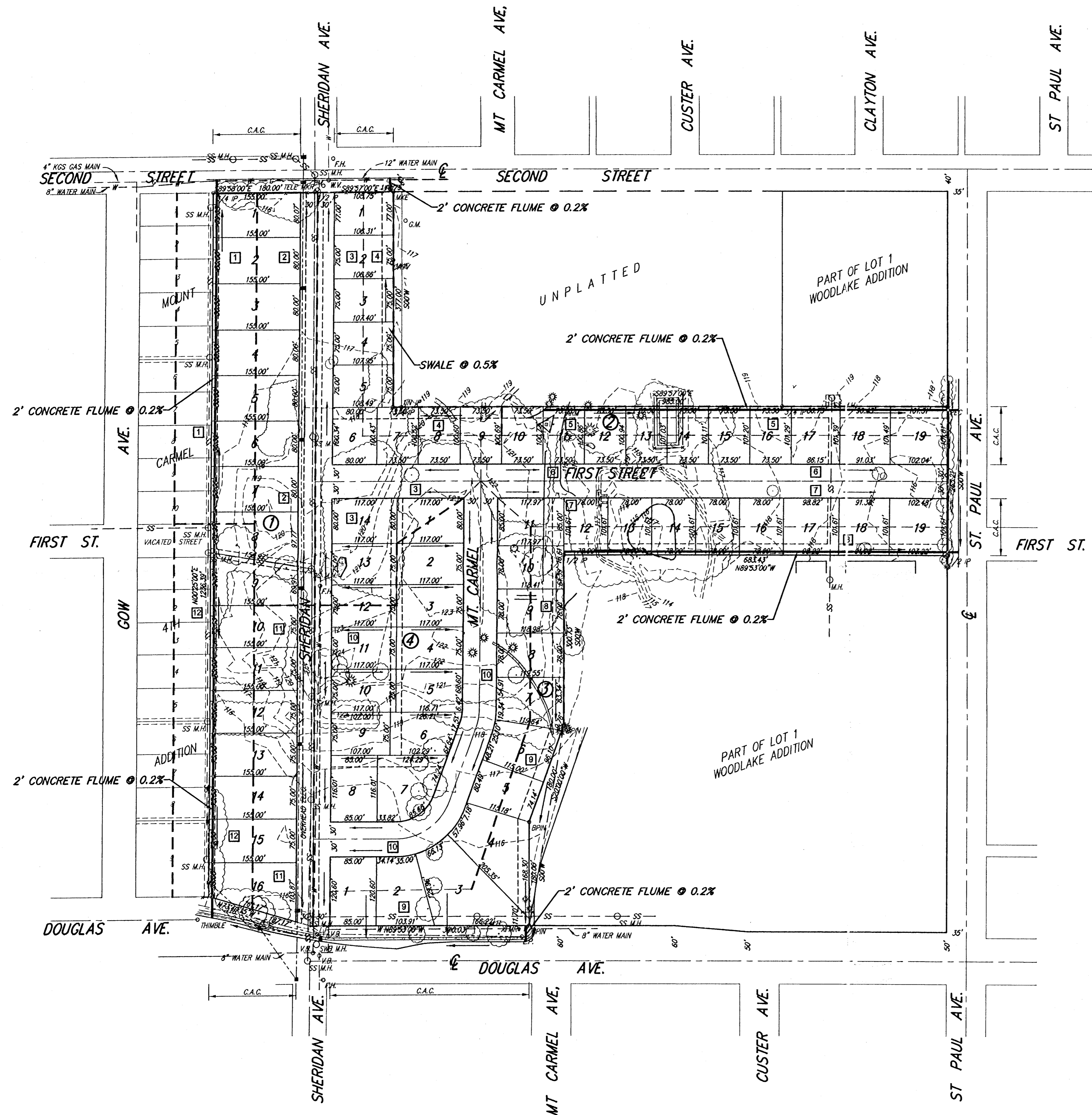


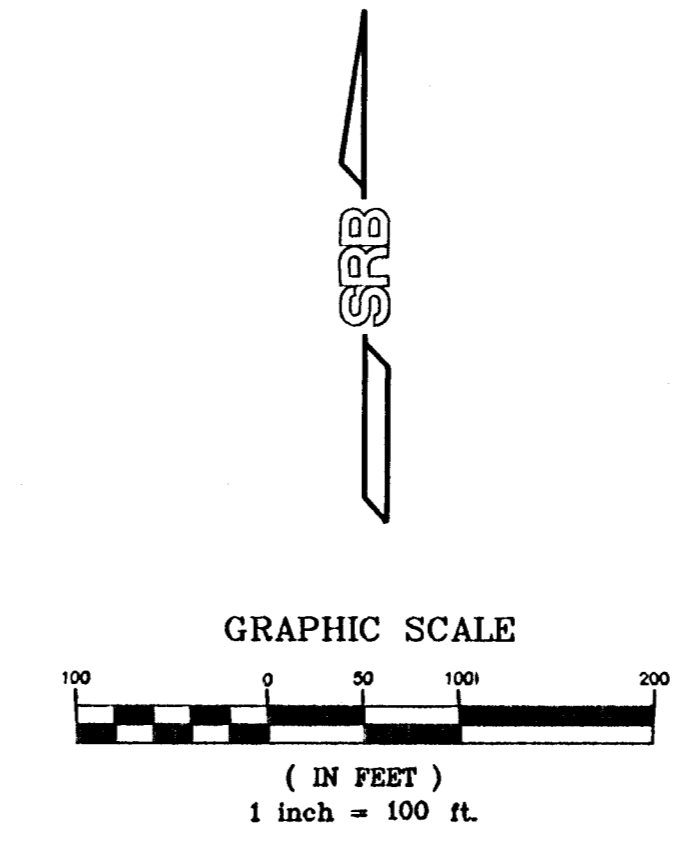
DRAINAGE CONCEPT WOODLAKE 2ND ADDITION

WICHITA, SEDGWICK COUNTY, KANSAS



DRAINAGE DATA											
Lot	Area	Cum. Area	Tc	Soil Type "B"			I100	Q2	Q100	Pipe Size and Slope	Inlets
				C2	C100	I2					
1	1.9	1.9	15	0.44	0.61	3.83	7.37	3.2	8.5	Flume	
2	1.8	1.8	15	0.44	0.61	3.83	7.37	3.0	8.1	Flume	
3	2.3	2.3	15	0.44	0.61	3.83	7.37	3.9	10.3	Flume	
4	0.8	0.8	15	0.44	0.61	3.83	7.37	1.3	3.8	Flume	
5	0.9	0.9	16	0.44	0.61	3.83	7.37	1.5	4.0	Flume	
6	1.5	1.5	15	0.44	0.61	3.83	7.37	2.5	6.7	Flume	
7	1.5	1.5	15	0.44	0.61	3.83	7.37	2.5	6.7	Flume	
8	1.2	1.2	15	0.44	0.61	3.83	7.37	2.0	5.4	Flume	
9	1.2	1.2	16	0.44	0.61	3.83	7.37	2.0	5.4	Flume	
10	5.0	5.0	15	0.44	0.61	3.83	7.37	8.4	22.5	Flume	
11	1.4	1.4	15	0.44	0.61	3.83	7.37	2.4	6.3	Flume	
12	2.2	2.2	15	0.44	0.61	3.83	7.37	3.7	9.9	Flume	

Off-site Drainage Backyard drainage from Lots east of Gow included in Areas 1 & 12.



BENCH MARK: CITY OF WICHITA STD. DISC. 15.0' N. OF CHAINLINK FENCE SOUTH SIDE OF SECOND ST. & 15.2' E. OF CENTERLINE SHERIDAN EXTENDED. ELEV.=116.65 (CITY OF WICHITA DATUM)

- LEGEND
- ◻ TELE. PED TELEPHONE PEDESTAL
 - ◉ G.M. GAS METER
 - ◉ W.M. WATER METER
 - ◉ F.H. FIRE HYDRANT
 - ◉ L.P. LIGHT POLE
 - POWER POLE
 - HIGH LINE POLE
 - ← GUY ANCHOR
 - ◉ SIGN
 - ◉ S.S. M.H. SANITARY SEWER MANHOLE

