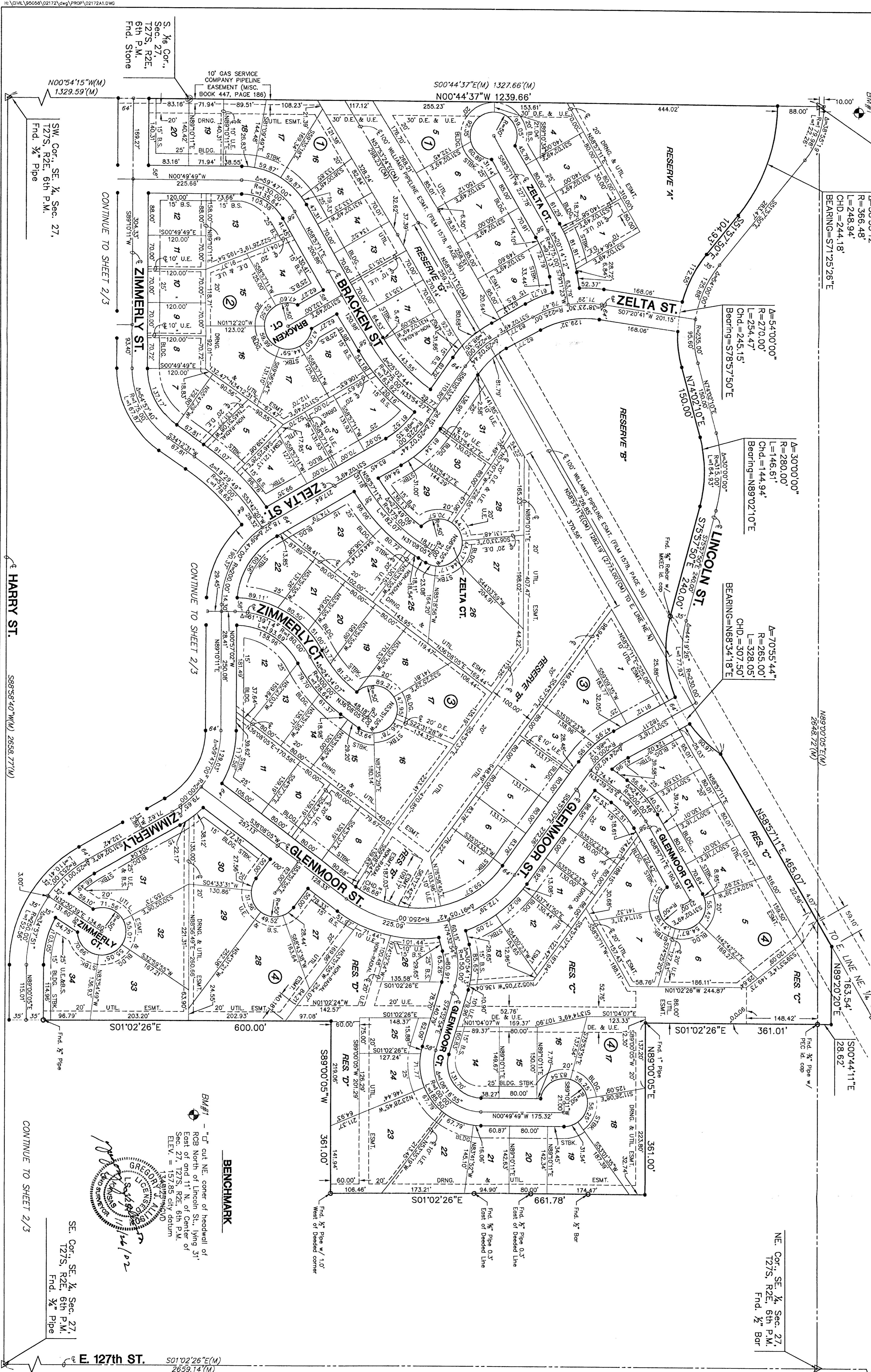


# FINAL PLAT

## WOODLAND LAKES ESTATES THIRD ADDITION

### AN ADDITION TO WICHITA, SEDGWICK COUNTY, KANSAS



NW Cor., SE 1/4, Sec. 27,  
T27S, R2E, 6th P.M.  
Set 5/8" rebar w/  
MREC C1S 39 id cap

Am=54700.00'  
R=270.00'  
Chd.=245.15'  
Bearing=S78°57'50"E

Am=30700.00'  
R=280.00'  
L=146.61'  
Chd.=144.94'  
Bearing=N89°02'10"E

Am=7055.144'  
R=285.00'  
L=328.05'  
Chd.=307.50'  
Bearing=N88°34'18"E

N58°57'11"E 465.07'  
RES. C

TO E LINE NE 1/4 SEC. 27  
N89°20'20"E  
148.42'

S01°02'26"E  
361.01'

NE Cor., SE 1/4, Sec. 27,  
T27S, R2E, 6th P.M.  
Fnd. 1/2" Bar

N00°44'11"W(CM)  
2651.11'(CM)

N00°54'15"W(M)  
1329.69'(M)

SW Cor., SE 1/4, Sec. 27,  
T27S, R2E, 6th P.M.  
Fnd. 3/4" Pipe

CONTINUE TO SHEET 2/3

CONTINUE TO SHEET 2/3

HARRY ST.

568°58'40"W(N) 2858.77'(N)

S01°02'26"E  
600.00'

CONTINUE TO SHEET 2/3

SE Cor., SE 1/4, Sec. 27,  
T27S, R2E, 6th P.M.  
Fnd. 3/4" Pipe

E 127th ST.  
S01°02'26"E(M)  
2659.74'(M)

**BENCHMARK**  
"C" cut NE corner of headwall of  
East of and 11' N. of Center of T  
Sec. 27, T27S, R2E, 6th P.M.  
Elev. = 1578.86, city datum

LOT	BLOCK	ELEVATION (CITY DATUM)	ELEVATION (USDS)
1	1	1342.5	155.1
2	1	1343.0	155.6
3	1	1343.0	155.6
4	1	1343.0	155.6
1	3	1333.0	146.1
2	3	1333.0	146.1
3	3	1332.3	145.4
4	3	1331.5	144.1
5	3	1330.5	143.1
6	3	1330.5	143.1
7	3	1330.5	143.1
8	3	1330.8	143.4
16	3	1330.8	143.4
17	3	1331.5	144.1
26	3	1333.5	146.1
27	3	1334.0	146.6
28	3	1335.0	147.6
31	3	1337.0	149.6
6	4	1332.5	146.1
7	4	1331.0	145.6
8	4	1330.8	145.4
11	4	1330.8	145.4
12	4	1330.5	145.1
13	4	1330.5	145.1
14	4	1330.5	145.1
15	4	1330.5	145.1
16	4	1330.5	145.1
17	4	1331.0	145.6
23	4	1326.5	139.1
24	4	1328.0	140.6
25	4	1329.5	142.1
26	4	1329.5	142.1
27	4	1329.5	142.1
28	4	1328.0	140.6

SCALE: 1" = 100'

**LEGEND**

- △ = SECTION CORNER
- = MONUMENT FOUND
- = FOUND PROPERTY
- = CORNER
- = SET 5/8" REBAR W/ MREC C1S #39 CAP
- B.S. = BUILDING SETBACK
- U.E. = UTILITY EASEMENT
- (P) = PLATTED DIMENSION
- (M) = MEASURED DIMENSION
- (CM) = CALCULATED FROM MEASUREMENT
- (D) = DEEDED MEASUREMENT

# FINAL PLAT

## WOODLAND LAKES ESTATES THIRD ADDITION

AN ADDITION TO WICHITA, SEDGWICK COUNTY, KANSAS

NW. Cor., SE 1/4, Sec. 27,  
T27S, R2E, 6th P.M.  
Set 3/8" rebar w/  
MKEC CLS 39 Id cap

NE. Cor., NE 1/4, Sec. 27,  
T27S, R2E, 6th P.M.  
Not Fnd., Not Set

S 1/8 Cor.,  
Sec. 27,  
T27S, R2E,  
6th P.M.  
Fnd. Stone

NE. Cor., SE 1/4, Sec. 27,  
T27S, R2E, 6th P.M.  
Fnd. 1/2" Bar

BM#1

10" GAS SERVICE COMPANY PIPELINE  
EASEMENT (MISC. BOOK 447, PAGE 168)

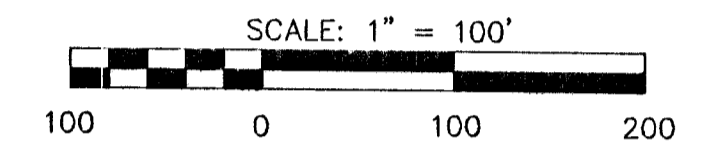
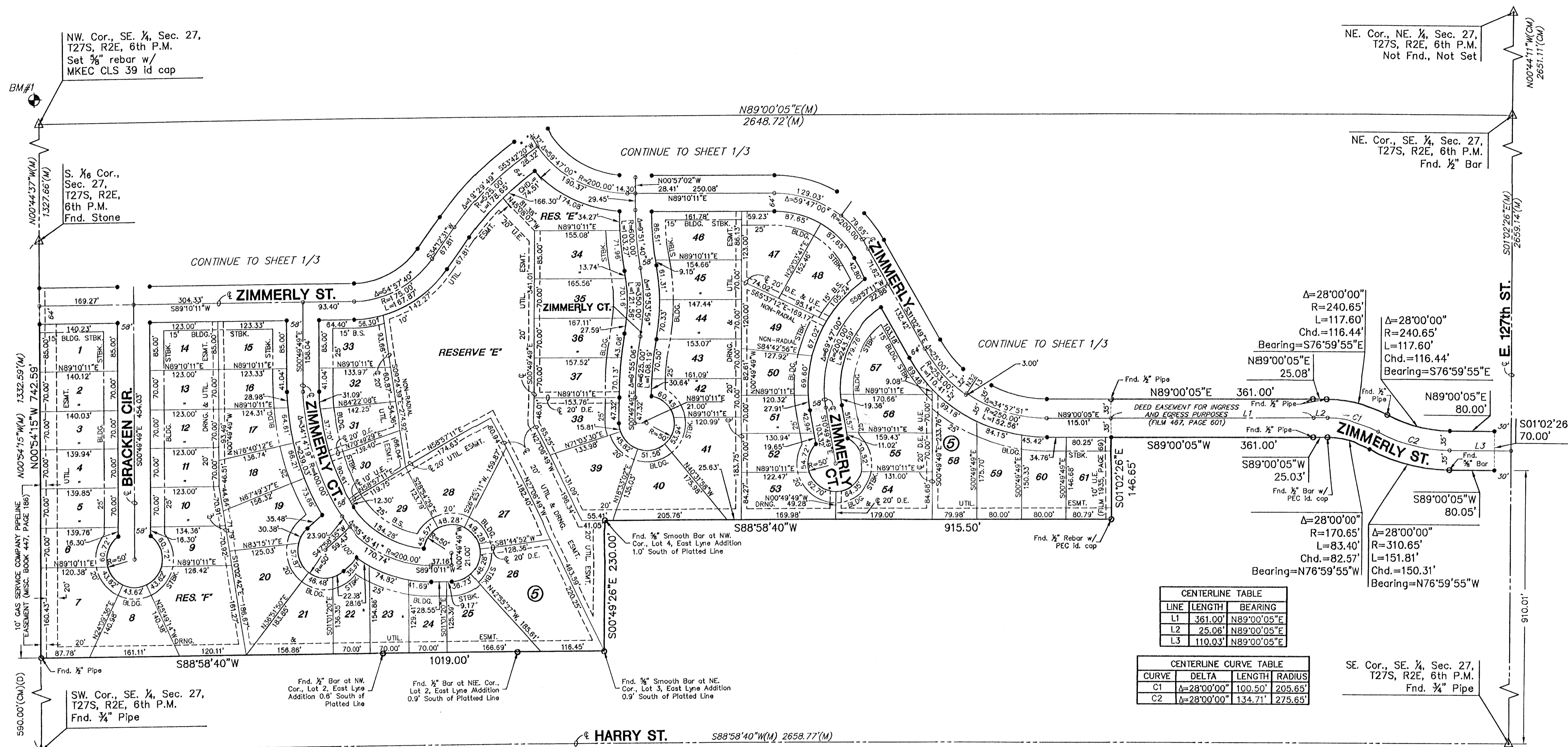
SW. Cor., SE 1/4, Sec. 27,  
T27S, R2E, 6th P.M.  
Fnd. 3/4" Pipe

SE. Cor., SE 1/4, Sec. 27,  
T27S, R2E, 6th P.M.  
Fnd. 1/4" Pipe

CONTINUE TO SHEET 1/3

CONTINUE TO SHEET 1/3

CONTINUE TO SHEET 1/3



- LEGEND**
- △ = SECTION CORNER MONUMENT FOUND
  - = FOUND PROPERTY CORNER
  - = SET 5/8" REBAR W/ MKEC CLS #39 CAP
  - B.S. = BUILDING SETBACK
  - U.E. = UTILITY EASEMENT
  - (P) = PLATTED DIMENSION
  - (M) = MEASURED DIMENSION
  - (CM) = CALCULATED FROM MEASUREMENT
  - (D) = DEEDED MEASUREMENT

**CENTERLINE TABLE**

LINE	LENGTH	BEARING
L1	361.00'	N89°00'05"E
L2	25.06'	N89°00'05"E
L3	110.03'	N89°00'05"E

**CENTERLINE CURVE TABLE**

CURVE	DELTA	LENGTH	RADIUS
C1	Δ=28°00'00"	100.50'	205.65'
C2	Δ=28°00'00"	134.71'	275.65'

**MINIMUM PAD ELEVATIONS (LOWEST OPENINGS)**

LOT	BLOCK	ELEVATION (CITY DATUM)	ELEVATION (USGS)
26	5	1329.5	142.1
27	5	1330.5	143.1
28	5	1333.5	146.1
29	5	1333.5	146.1
30	5	1333.5	146.1
31	5	1333.5	146.1
32	5	1333.5	146.1
33	5	1333.5	146.1
34	5	1333.5	146.1
35	5	1333.5	146.1
36	5	1333.5	146.1
37	5	1333.5	146.1
38	5	1331.5	144.1
39	5	1330.5	143.1

**BENCHMARKS**

BM#1 - "I" cut NE. corner of headwall of ROB North of Lincoln St., lying 31' East of and 11' N. of Center of Sec. 27, T27S, R2E, 6th P.M. ELEV. = 157.85 city datum 1345.25 NGVD

