

DRAINAGE & UTILITY PLAN

THE GATEWAY

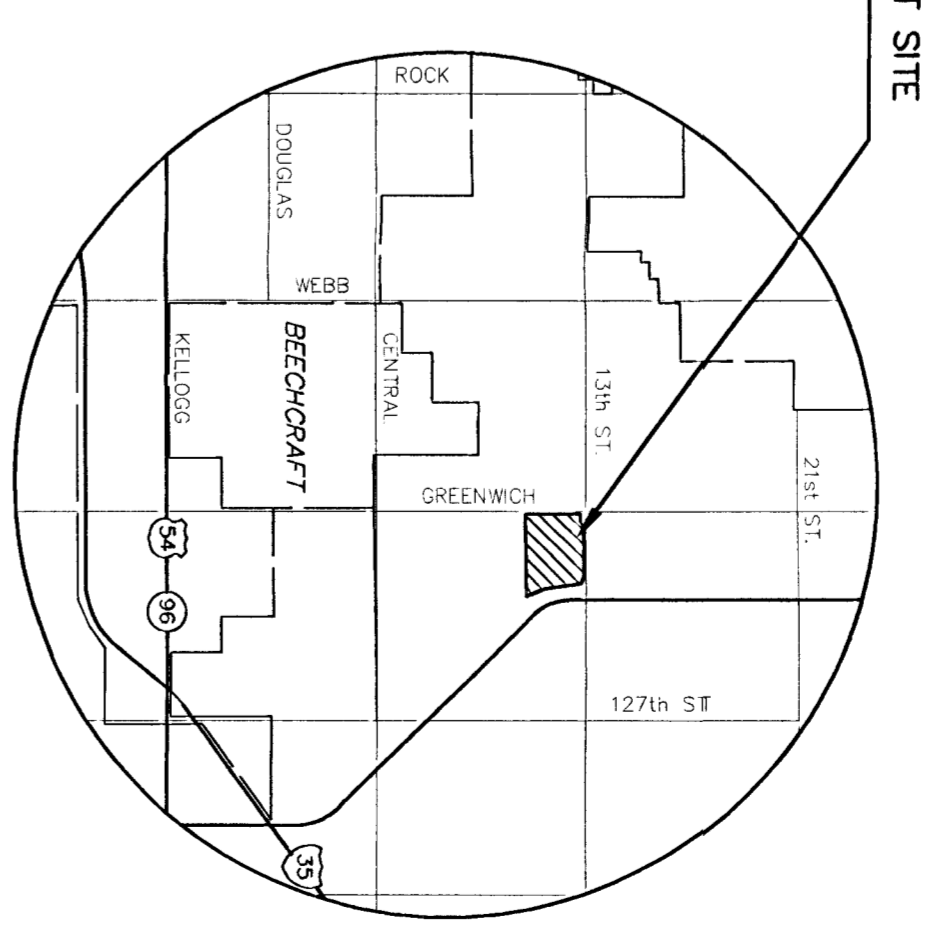
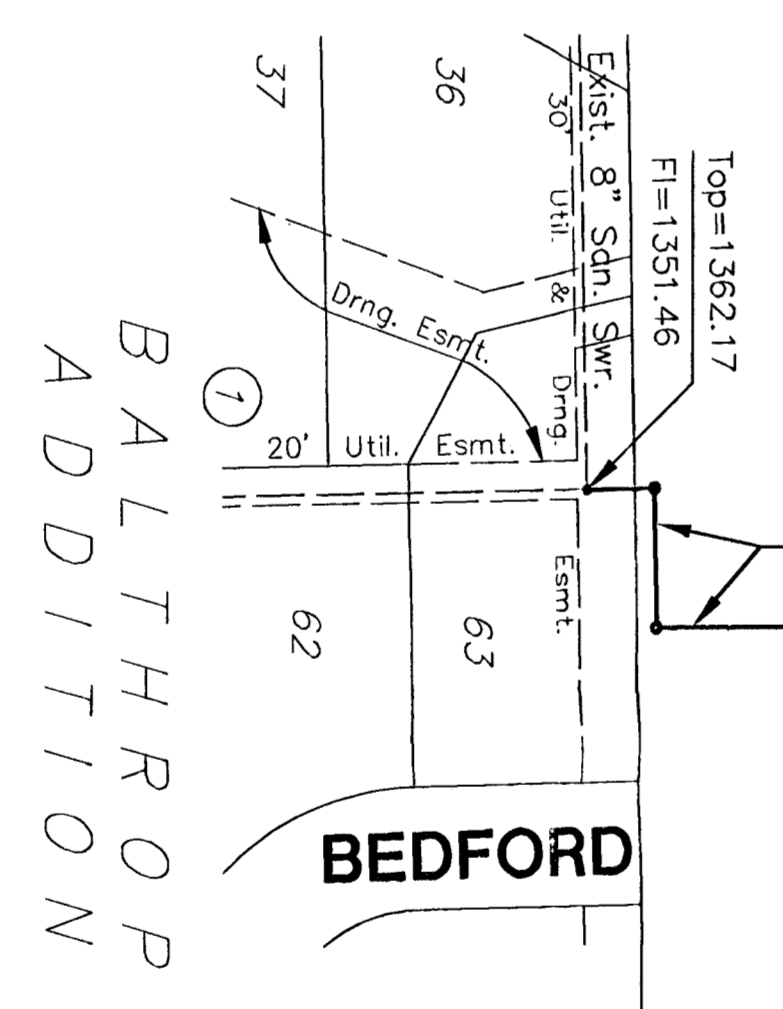
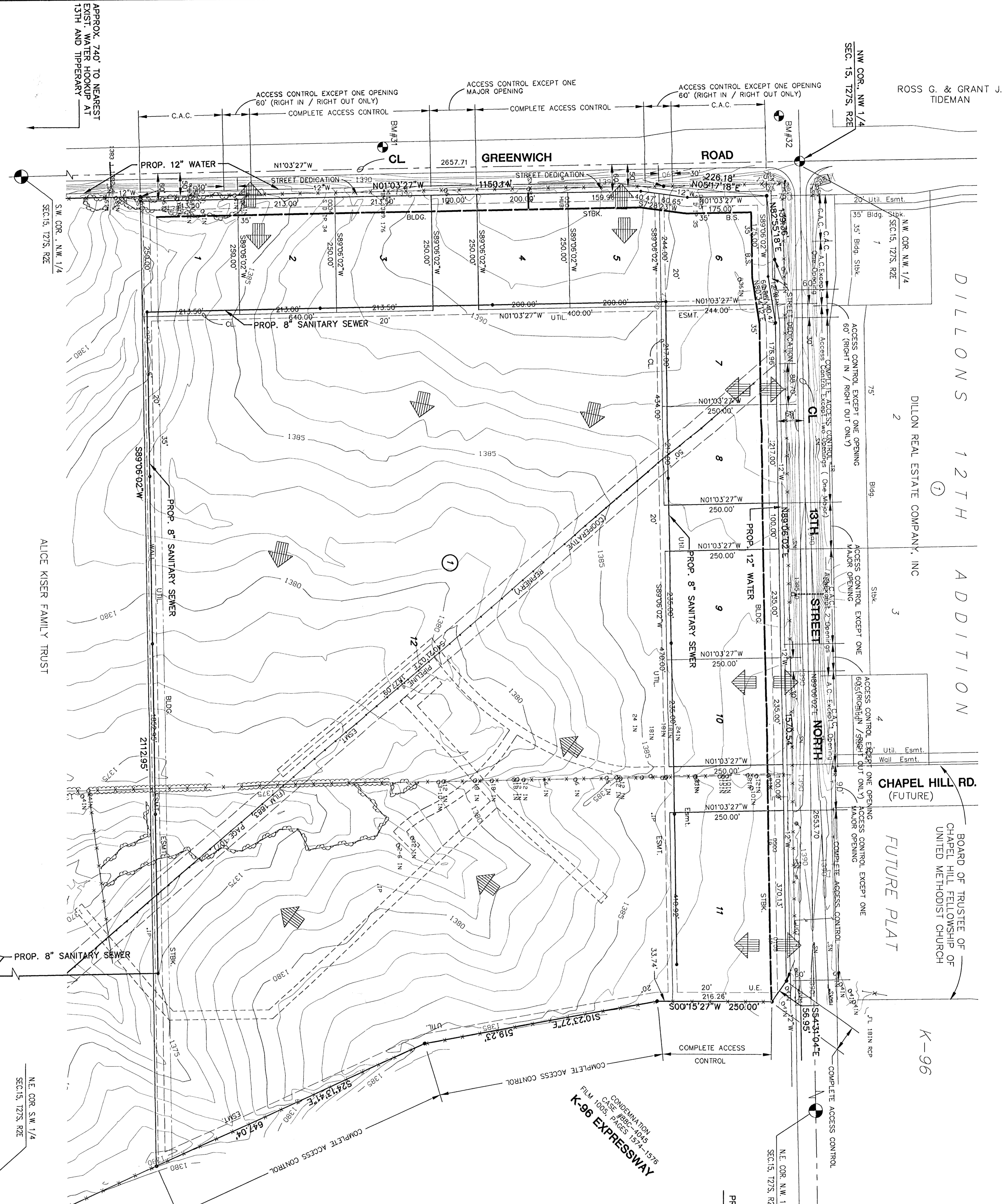
OWNERS: WILLARD J. KISER PROPERTIES, L.L.C.
AND KISER GATEWAY, L.L.C. 7765 KILLARNEY PLACE WICHITA, KS. 67226 (316) 634-0363

GENTNER ADDITION

DEVELOPERS: GATEWAY PARTNERS, L.L.C. c/o RITCHE ASSOC., INC. 8100 E. 22ND WICHITA, KANSAS 67226 (316) 684-7300
AND LAHAM DEVELOPMENT 150 N. MARKET WICHITA, KANSAS 67202 (316) 262-6412



M-D ENGINEERING
CONSULTANTS, INC.
411 N. WEBB ROAD
WICHITA, KS. 67209
316-684-9600



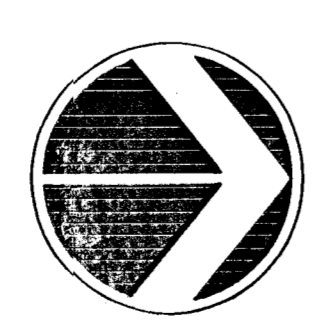
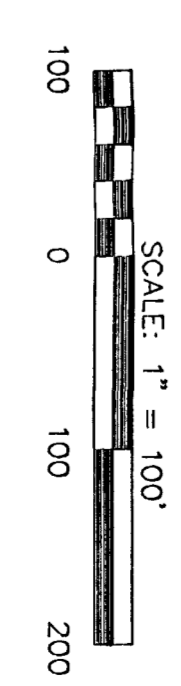
BENCHMARKS

BM#31 FENCE "T" POST 826' N. & 49' E. OF EAST 1/4 COR. SEC. 16, 127S, R2E (13TH ST. N. & GREENWICH RD.)
ELEV. = 1399.18

BM#32 COW BENCHMARK, 44' S. & 101' W. OF NE COR. SEC. 16, 127S, R2E (13TH ST. N. & GREENWICH RD.)
ELEV. = 1395.53 (PUBLISHED 1981.13)

LEGEND

- PIPELINE MARKER
- POWER POLE
- SHIN TREE
- TRANSFORMER
- IRON PIN
- FENCE



BALTHROP
ADDITION

FUTURE PLAT

K-96

CONDENATION
CASE NO. 1005
FILED 10/25/05
K-96 EXPRESSWAY

DRAINAGE & UTILITY PLAN

THE GATEWAY

OWNERS: WILLARD J. KISER PROPERTIES, L.L.C.
AND KISER GATEWAY, L.L.C. 7765 KILLARNEY PLACE WICHITA, KS. 67226 (316) 634-0363

GENTNER ADDITION

DEVELOPERS: GATEWAY PARTNERS, L.L.C. c/o RITCHE ASSOC., INC. 8100 E. 22ND WICHITA, KANSAS 67226 (316) 684-7300
AND LAHAM DEVELOPMENT 150 N. MARKET WICHITA, KANSAS 67202 (316) 262-6412



M-D ENGINEERING
CONSULTANTS, INC.
411 N. WEBB ROAD
WICHITA, KS. 67209
316-684-9600