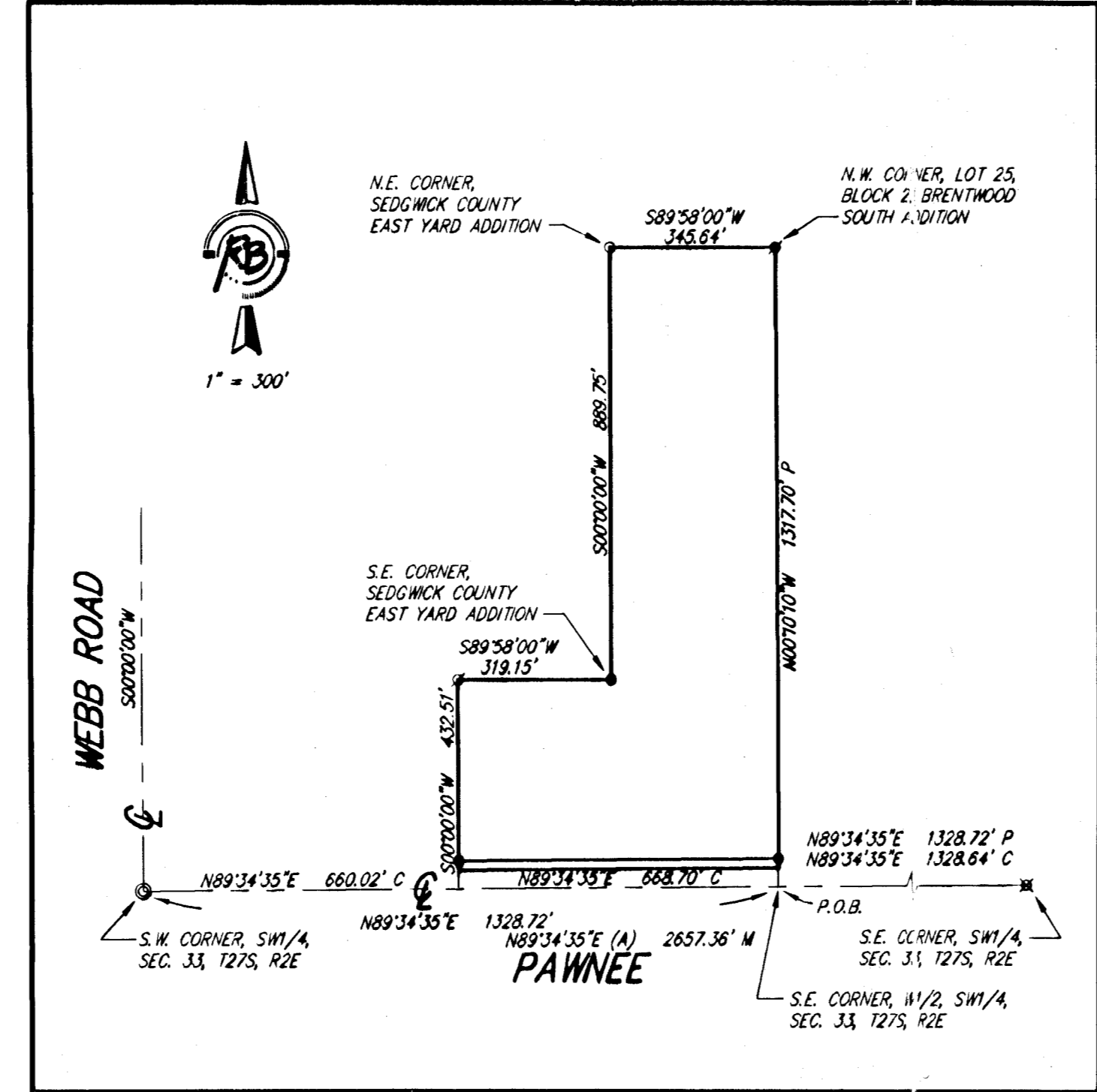
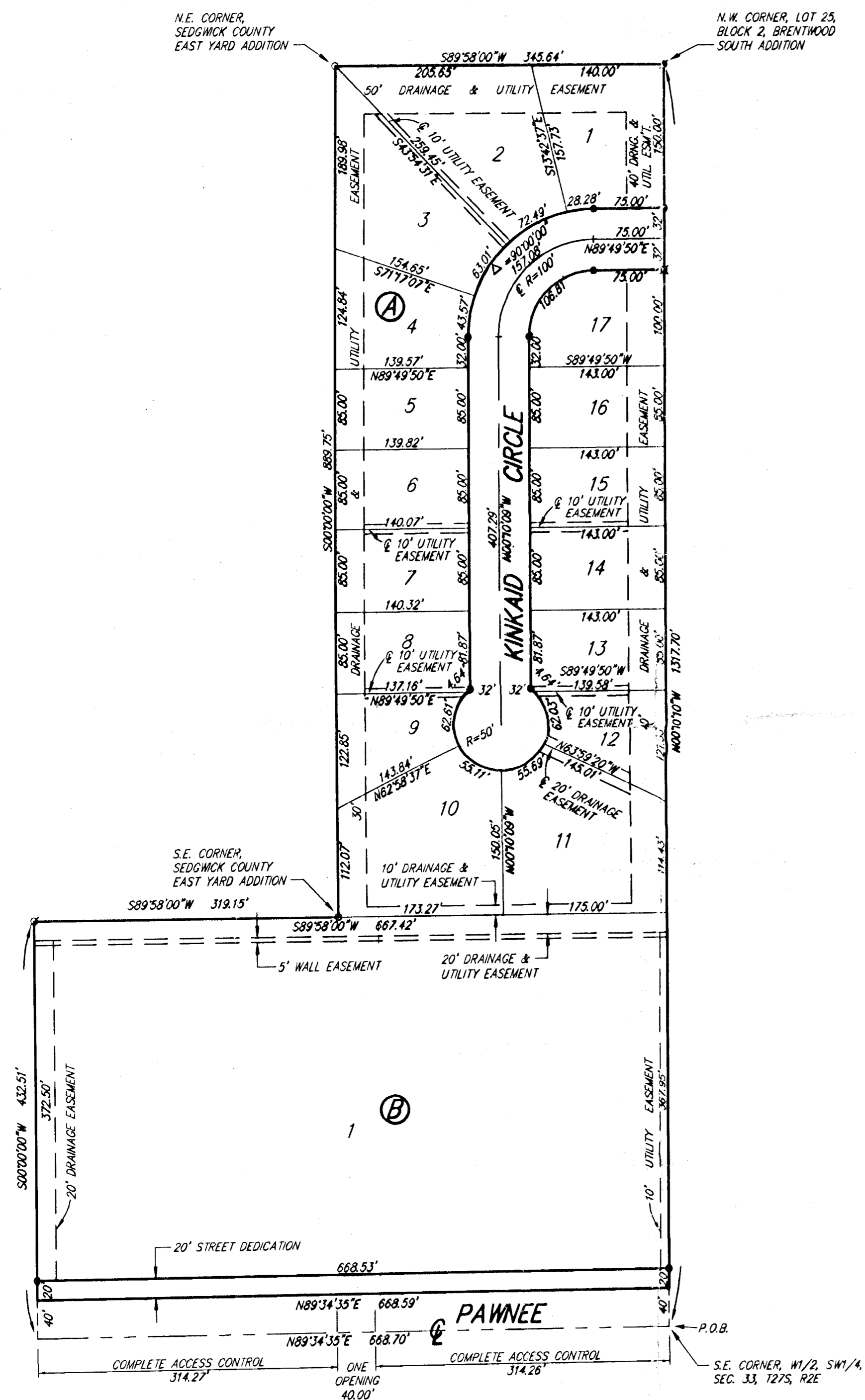


# BRENTWOOD SOUTH 2ND ADDITION

## Wichita, Sedgwick County, Kansas



1" = 100'

(A) = ASSUMED  
M = MEASURED  
C = CALCULATED  
P = PLATTED (BRENTWOOD SOUTH ADD.)

**SURVEY MARKER LEGEND**

- = 1/2" IRON PIPE
- ◉ = 1/2" IRON PIPE IN THIMBLE
- ✱ = 1/2" REBAR W/BAUGHMAN CAP
- ✱ = 5/8" REBAR W/CAP
- ✱ = 1/2" REBAR W/R&B CAP (FOUND)
- ✱ = 5/8" REBAR W/S&B CAP (FOUND)
- = 5/8" REBAR W/R&B CAP (SET)

BENCH MARK: C&M BENCHMARK AT THE SOUTHEAST CORNER OF THE INTERSECTION OF CRANBROOK AND SKINNER ELEV.=1380.03 (M.S.L.)

ON SITE BENCH MARK: R.R. SPIKE ON EAST FACE OF POWER POLE 1,215 FEET EAST AND 46 FEET NORTH OF THE S.W. CORNER, SEC. 33, T27S, R2E ELEV.=1388.99 (M.S.L.)

State of Kansas)  
Sedgwick County) SS

We, Ruggles & Bohm, P.A., Land Surveyors in aforesaid county and state, do hereby certify that, under the supervision of the undersigned, we have surveyed and platted "BRENTWOOD SOUTH 2ND ADDITION", Wichita, Sedgwick County, Kansas, and that the accompanying plat is a true and correct exhibit of the property surveyed, described as follows:

**LEGAL DESCRIPTION:**

That part of the W1/2 of the SW1/4 of Sec. 33, T27S, R2E of the 6th P.M., Sedgwick County, Kansas, described as commencing at the southwest corner of said W1/2; thence N89°34'35"E along the south line of said W1/2, 1328.72 feet to the southeast corner of said W1/2 for a place of beginning; thence N00°10'10"W along the east line of said W1/2, 1317.70 feet to the northwest corner of Lot 25, Block 2, Brentwood South Addition, Wichita, Sedgwick County, Kansas; thence S89°58'00"W, 345.64 feet to the northeast corner of Sedgwick County East Yard Addition, Sedgwick County, Kansas; thence S00°00'00"W, 889.75 feet to the southeast corner of said Addition; thence S89°58'00"W along the south line of said Addition, 319.15 feet; thence S00°00'00"W, parallel with the west line of said W1/2, 432.51 feet to the south line of said W1/2; thence N89°34'35"E along the south line of said W1/2, 668.70 feet to the place of beginning, EXCEPT the south 40.00 feet for right of way.

All public easements and dedications are hereby vacated by virtue of K.S.A. 12-512(b).

Ruggles & Bohm, P.A.

Thomas C. Ruggles Land Surveyor

Know all men by these presents that we, the undersigned, have caused the land described in the surveyor's certificate to be platted into Lots, blocks and a Street to be known as "BRENTWOOD SOUTH 2ND ADDITION", Wichita, Sedgwick County, Kansas. Utility easements are hereby granted for the construction and maintenance of all public utilities. Drainage easements is hereby granted to the public as indicated for drainage purposes. The wall easement is hereby granted for the construction and maintenance of a screening wall. Utilities and services are allowed to cross the wall easements. The streets are hereby dedicated to and for the use of the public. Access Controls as indicated are hereby granted to the appropriate governing body. A drainage plan has been developed for this plat; all drainage easements shall remain at established grades, or as modified with the approval of the City Engineer, and unobstructed to allow for the conveyance of storm water.

Brentwood Development, Inc.

Stephen G. Miller President

State of Kansas)  
Sedgwick County) SS

The foregoing instrument acknowledged before me, this 18 day of March, 2004, by Stephen G. Miller, President of Brentwood Development, Inc., on behalf of the corporation.

Judy E. Lashley Notary Public

My appointment expires 12/15/05

We, the undersigned, holders of a mortgage on the above described property, do hereby consent to this plat of "BRENTWOOD SOUTH 2ND ADDITION", Wichita, Sedgwick County, Kansas, this 18 day of March, 2004.

Garden Plain State Bank

Patrick F. Waldon President

State of Kansas)  
Sedgwick County) SS

The foregoing instrument acknowledged before me, this 18 day of March, 2004, by Patrick F. Waldon, President of Garden Plain State Bank on behalf of the Bank.

Judy E. Lashley Notary Public  
Judy E. Lashley

My appointment expires 12/15/05

This plat of "BRENTWOOD SOUTH 2ND ADDITION", Wichita, Sedgwick County, Kansas, has been submitted to and approved by the Wichita-Sedgwick County Metropolitan Area Planning Commission, Wichita, Kansas. Dated this \_\_\_ day of \_\_\_, 2004.

Wichita-Sedgwick County Metropolitan Area Planning Commission

\_\_\_\_\_  
Ronald L. Marnell Chairman

\_\_\_\_\_  
John L. Schlegel Secretary

This plat approved and all dedications shown hereon accepted by the City Council of the City of Wichita, Kansas, this \_\_\_ day of \_\_\_, 2004.

At the Direction of the City Council

\_\_\_\_\_  
Carlos Mayans Mayor

\_\_\_\_\_  
Karen Schofield City Clerk

Reviewed in accordance with K.S.A. 58-2005 on this \_\_\_ day of \_\_\_, 2004.

Deputy County Surveyor  
Sedgwick County Kansas

\_\_\_\_\_  
Tricia L. Robello, LS #1246

Entered on transfer record this \_\_\_ day of \_\_\_, 2004.

County Clerk

\_\_\_\_\_  
Don Brace

State of Kansas)  
Sedgwick County) SS

This is to certify that this plat has been filed for record in the office of the Register of Deeds, this \_\_\_ day of \_\_\_, 2004, at \_\_\_ o'clock \_\_\_ M., and is duly recorded.

Register of Deeds

\_\_\_\_\_  
Bill Meek

Deputy

\_\_\_\_\_  
Linda Kizzire