

LOTUS ADDITION

Sedgwick County, Kansas

State of Kansas)
Sedgwick County) SS

We, Ruggles & Bohm, P.A., Land Surveyors in aforesaid county and state, do hereby certify that, under the supervision of the undersigned, we have surveyed and platted "LOTUS ADDITION", Sedgwick County, Kansas, and that the accompanying plat is a true and correct exhibit of the property surveyed, described as follows:

LEGAL DESCRIPTION:
Beginning at a point on the south line of the Southeast Quarter of Section 18, Township 28 South, Range 2 East of the Sixth Principal Meridian, Sedgwick County, Kansas, said point being 540.50 feet west of the Southeast corner of said Section 18; thence continuing west along the south line of said Quarter-Quarter, a distance of 779.73 feet to the Southwest corner of said Quarter-Quarter; thence North, 1327.37 feet to the Northwest corner of said Quarter-Quarter; thence East along the north line of said Quarter-Quarter, a distance of 569.88 feet; thence South, 667.41 feet; thence East, 213 feet; thence South, 660 feet to the point of beginning.

All public easements and dedications are hereby vacated, by virtue of K.S.A. 12-512(b).

Ruggles & Bohm, P.A.

Thomas C. Ruggles

Thomas C. Ruggles
Land Surveyor

Know all men by these presents that we, the undersigned, have caused the land described in the surveyor's certificate to be platted into Lots and a Street, to be known as "LOTUS ADDITION", Sedgwick County, Kansas. The utility easements are hereby granted to the public as indicated for the construction and maintenance of all public utilities. The drainage easements are hereby granted to the public as indicated for drainage purposes. The streets are hereby dedicated to and for the use of the public. Access Controls as indicated are hereby granted to the appropriate governing body. A drainage plan has been developed for this plat and all drainage easements, rights-of-way or reserves shall remain at established grades or as modified with the approval of the City Engineer, and unobstructed to allow for the conveyance of stormwater.

Hoa Van Nguyen

Hoa Van Nguyen
Susie X. Nguyen

Susie X. Nguyen

State of Kansas)
Sedgwick County) SS

The foregoing instrument acknowledged before me, this 04 day of August, 2004, by Hoa Van and Susie X. Nguyen.

Mildred E. Franz

Mildred E. Franz
Notary Public
My appointment expires 5/1/12

BRIAN COMBS
Notary Public - State of Kansas
My Appl. Expires 12/31/05

State of Kansas)
Sedgwick County) SS

We, the undersigned, holders of a mortgage on the above described property, do hereby consent to this plat of "LOTUS ADDITION", Sedgwick County, Kansas, this 04th day of August, 2004.

Central National Bank

Travis Boles

Travis Boles
Commercial Loan Officer

State of Kansas)
Sedgwick County) SS

The foregoing instrument acknowledged before me, this 04th day of August, 2004, by Travis Boles, Commercial Loan Officer, on behalf of the bank.

Justin Taylor

Justin Taylor
Notary Public

My appointment expires 7/10/8

This plat of "LOTUS ADDITION", Sedgwick County, Kansas, has been submitted to and approved by the Wichita-Sedgwick County Metropolitan Area Planning Commission, Wichita, Kansas.

Dated this ____ day of _____, 2004.
Wichita-Sedgwick County Metropolitan Area Planning Commission

Ronald L. Marnell
Chairman

John L. Schlegel
Secretary

This plat is approved and all dedications shown hereon accepted by the City Council of the City of Wichita, Kansas, this ____ day of _____, 2004.

At the Direction of the City Council

Carlos Mayans
Mayor

Karen Sublett
City Clerk

Reviewed in accordance with K.S.A. 58-2005 on this ____ day of _____, 2004.

Tricia L. Robello, LS #1246
Deputy County Surveyor
Sedgwick County Kansas

Entered on transfer record this ____ day of _____, 2004.

Don Brace
County Clerk

State of Kansas)
Sedgwick County) SS

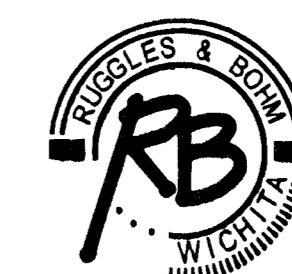
This is to certify that this plat has been filed for record in the office of the Register of Deeds, this ____ day of _____, 2004, at ____ o'clock ____ M, and is duly recorded.

Bill Meek
Register of Deeds

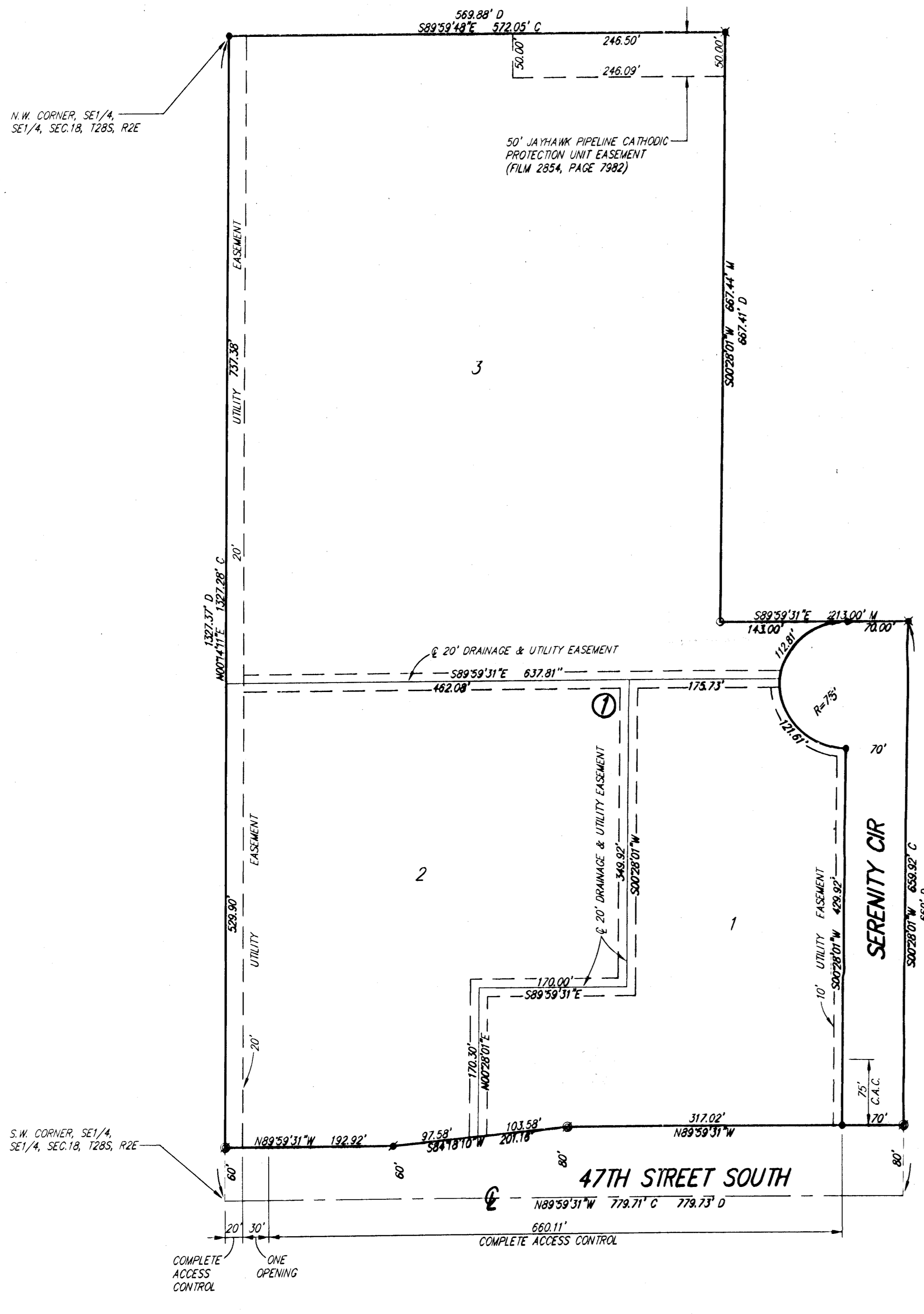
Linda Kizzire
Deputy

Ruggles & Bohm, P.A.
Engineering, Surveying, Land Planning

DWG FILE: SURVEY BASE
PROJECT NO. 2394P
JULY 28, 2004



924 North Main (316) 264-8008
Wichita, Kansas 67203 (316) 264-4621 fax
www.rbkansas.com E-mail: info@rbkansas.com



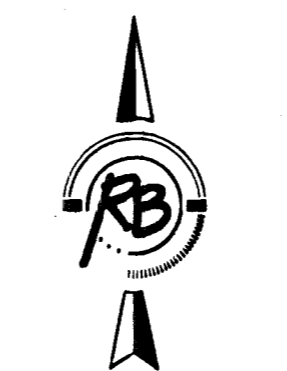
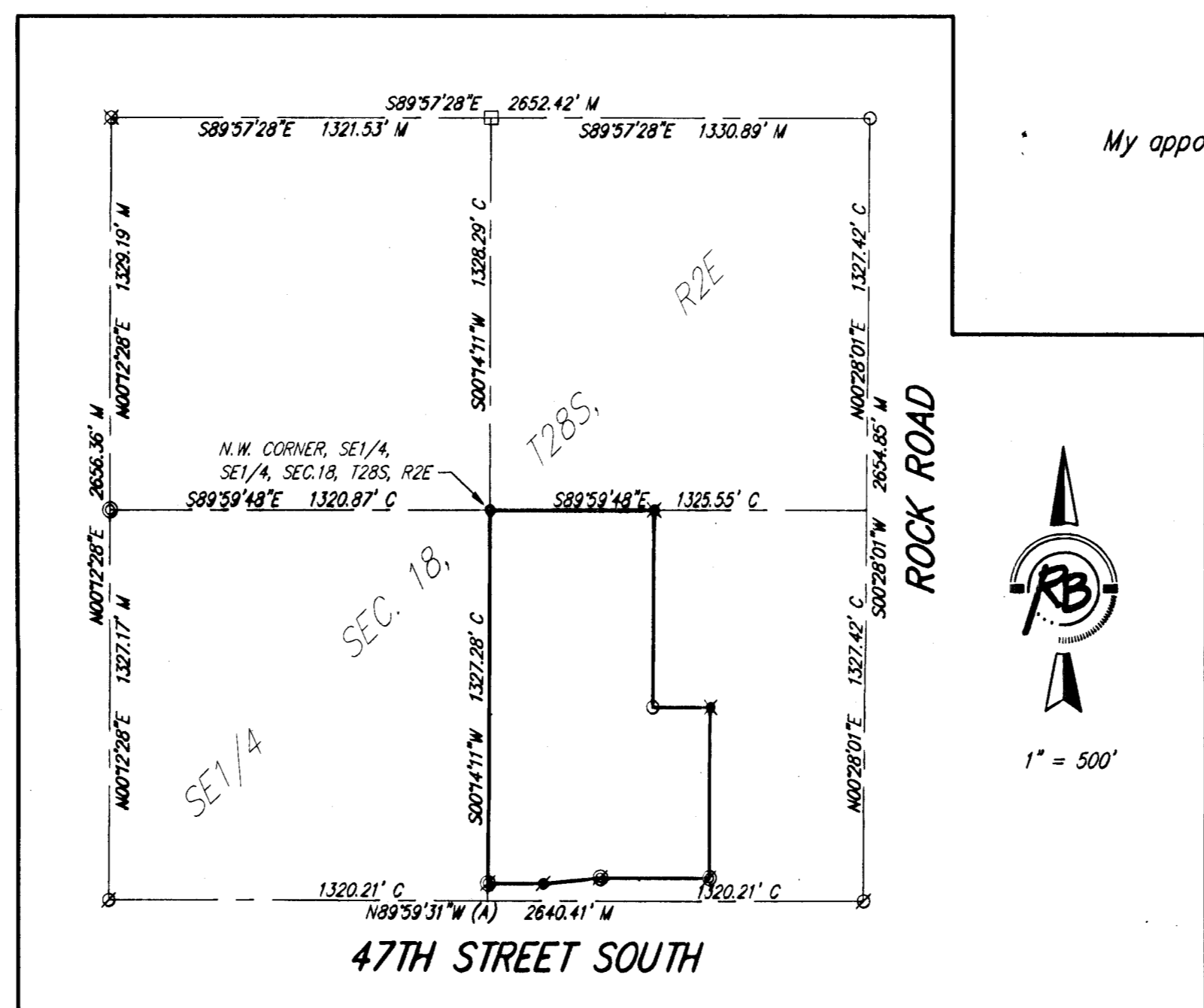
1" = 100'

(A) = ASSUMED
M = MEASURED
C = CALCULATED
D = DESCRIBED

SURVEY MARKER LEGEND

- = STONE
- ⊙ = 3/4" IRON PIPE
- ⊗ = 1/2" REBAR
- = 5/8" REBAR
- ⊕ = 1/2" REBAR W/TLS CAP
- ⊗ = 5/8" REBAR W/GOODECKE CAP
- ⊗ = 5/8" REBAR W/GARBER CAP
- ⊗ = 5/8" REBAR W/MKEC CAP
- ⊗ = 5/8" REBAR W/RUGGLES & BOHM CAP (SET)

BENCH MARK: BOLT IN CENTERLINE NORTH HUBQUARD 199.81'
WEST-NORTHWEST OF THE S.E. CORNER, SEC. 18, T28S, R2E
ELEV.=1369.34 (M.S.L.)



1" = 500'