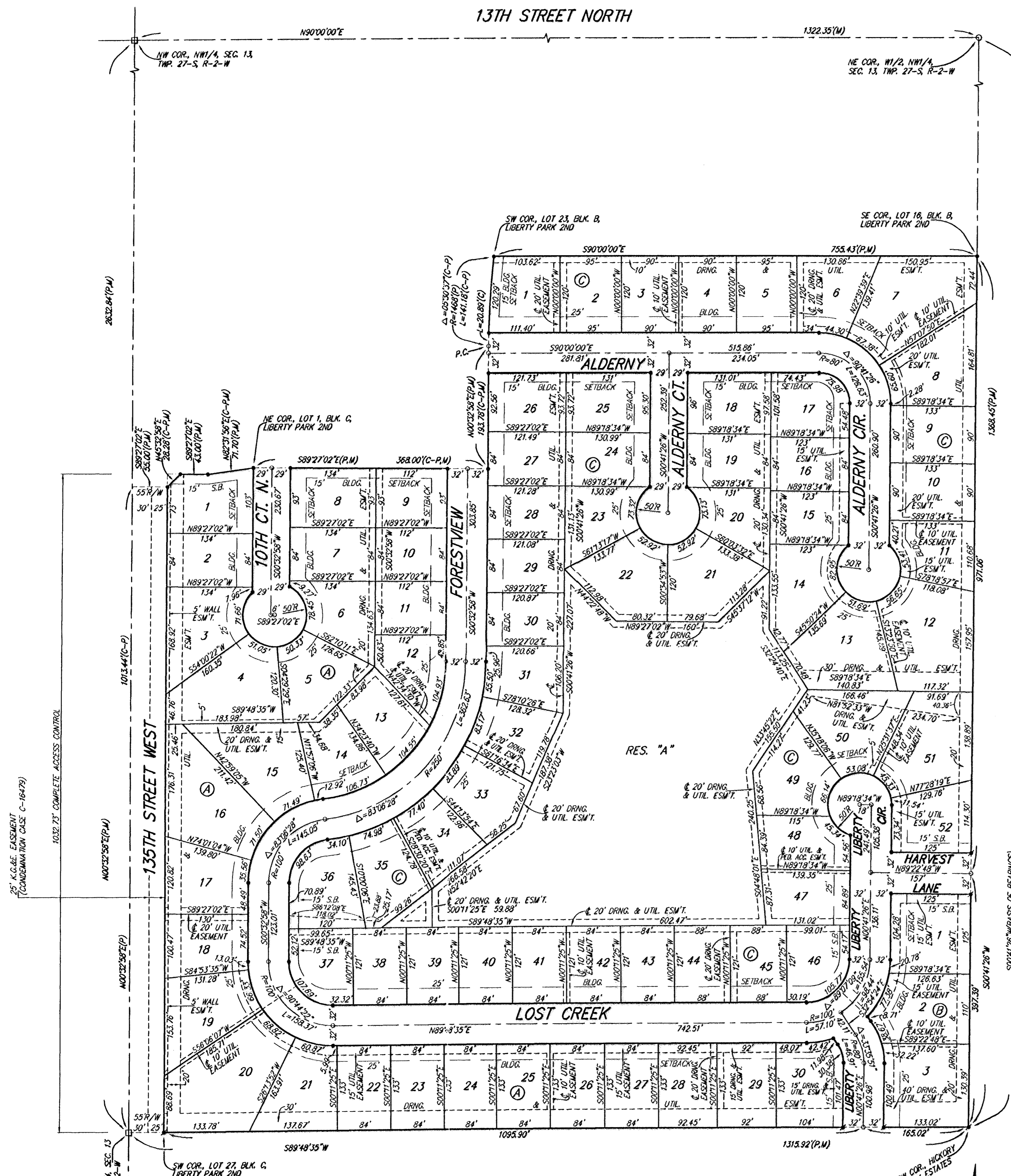


LIBERTY PARK 3RD

AN ADDITION TO WICHITA, SEDGWICK COUNTY, KANSAS



LOT	BLOCK	CITY DATUM	ELEVATION
1-14, 20-23	C	163.5	
29-35, 39-45	C	163.5	
47-50	C	163.5	

BENCHMARKS:
 135TH ST. N. & 13TH ST. N. - CITY OF WICHITA DISC AT SOUTHWEST CORNER OF INTERSECTION.
 30.002 S. OF & OF 13TH ST. N.
 35.002 W. OF & OF 135TH ST. N.
 ELEV. = 163.25 CITY DATUM (1355.65 NGVD29)

SMALL RAILROAD SPIKE IN 2ND HLP. W. OF 135TH ST. N. ON SOUTH SIDE OF 13TH ST. N. (N. FACE OF HLP).
 ELEV. = 121.10 CITY DATUM (1350.08 NGVD29)

604 NAIL IN HIGH LINE POLE, 800' W. & 31' N. OF THE NE COR., NW1/4, SEC. 13, TWP. 27-S, R-2-W
 ELEV. = 162.89 CITY DATUM (1350.08 NGVD29)

• = #4 REBAR W/ "BAUGHMAN" CAP (SET)
 * = #4 REBAR W/ "BAUGHMAN" CAP (FOUND)
 ○ = 5/4" IRON W/ ALLEGIBLE YELLOW CAP (FOUND)
 □ = 3/4" IRON W/ "SEDGWICK COUNTY" METAL CAP IN CONCRETE (FOUND)

(M) = MEASURED
 (P) = PLATTED
 (C-P) = CALCULATED PER PLATTED INFO.

NOTE:
 A master grading plan for drainage has been developed for this subdivision and is on file with the City of Wichita, Kansas. All drainage easements, rights-of-way, or reserves shall remain of established grades or as modified with the approval of the City Engineer of the City of Wichita, Kansas. No obstructions which impede the flow of this drainage system shall be allowed.

State of Kansas) SS We, Baughman Company, P.A., Surveyors in Sedgwick County) do hereby certify that we have surveyed and plotted "LIBERTY PARK 3RD", an Addition to Wichita, Sedgwick County, Kansas and that the accompanying plat is a true and correct exhibit of the property surveyed, described as and being a replat of all of Lots 24, 25, 26, 27, 28, 29, 30, 31, 32, 33, 34, 35, 36, 37, 38, and 39, Block B, Liberty Park 2nd, an Addition to Wichita, Sedgwick County, Kansas, together with all of Lots 1, 2, 3, 4, 5, 6, 7, 8, 9, 10, 11, 12, 13, 14, 15, 16, 17, 18, 19, 20, 21, 22, 23, 24, 25, 26, 27, 28, 29, 30, 31, 32, 33, 34, 35, 36, and 37, Block C, in said Liberty Park 2nd, together with all of Lots 1, 2, 3, 4, 5, 6, 7, 8, 9, 10, 11, 12, 13, 14, 15, 16, 17, 18, 19, 20, 21, 22, 23, 24, 25, 26, 27, 28, 29, 30, 31, 32, 33, 34, 35, and 36, Block D, in said Liberty Park 2nd, together with all of Lots 1, 2, and 3, Block E, in said Liberty Park 2nd, together with all of Reserve "D", as plotted in said Liberty Park 2nd, together with that part of Forestview lying south of the north line of Lot 9 in said Block C, as extended east to the west line of Lot 2 in said Block D, the most southerly Forestview Ct., 10th Ct. N. lying south of 10th St. N., Alderny, Alderny Ct., Liberty, Harvest Lane, Lost Creek, and Lost Creek Cir., all as dedicated in said Liberty Park 2nd.

Existing public easements and dedications being vacated by virtue of K.S.A. 12-512(b).
 All being situated in the NW1/4 of Sec. 13, Twp. 27-S, R-2-W of the 6th P.M., Sedgwick County, Kansas.
 Baughman Company, P.A.

Michael G. Conroy
 Michael G. Conroy, Surveyor

Know all men by these presents that we, the undersigned, have caused the land in the surveyors certificate to be platted into Lots, Blocks, Streets, and a Reserve, to be known as "LIBERTY PARK 3RD", an Addition to Wichita, Sedgwick County, Kansas. The utility easements are hereby granted as indicated for the construction and maintenance of all public utilities. The drainage and utility easements are hereby granted as indicated for drainage purposes and for the construction and maintenance of all public utilities. The drainage easements are hereby granted as indicated for drainage purposes. The wall easement is hereby granted as indicated for the construction and maintenance of a private screening wall and utility main lines and service lines shall be allowed to cross these easements. The utility and pedestrian access easements are hereby granted as indicated for the construction and maintenance of all public utilities and for pedestrian access to or from Reserve "A" and no fences or other obstructions shall be constructed or placed on or within these easements. The streets are hereby dedicated to and for the use of the public. Reserve "A" is hereby reserved for landscaping, lakes, open space, berms, drainage purposes, and utilities as confined to easements. Reserve "A" shall be owned and maintained by the homeowners association for the addition. Access controls shall be as depicted on the face of the plat and are hereby granted to the City of Wichita, Kansas. The Minimum Building Pad Elevations for the lowest opening to the structures shall be as indicated on the face of the plat.

Kelsey Investments, Inc.
Paul E. Kelsey
 Paul E. Kelsey, President

State of Kansas) SS The foregoing instrument acknowledged before Sedgwick County) me, this 7th day of July, 2004, by Paul E. Kelsey, President of Kelsey Investments, Inc., on behalf of the corporation.
 JUDITH M. TERHUNE
 Notary Public - State of Kansas
 My Appt. Expires 11-7-2005
Judith M. Terhune
 Judith M. Terhune, Notary Public

We, the undersigned holders of mortgages on the above described property, do hereby consent to this plat of "LIBERTY PARK 3RD", an Addition to Wichita, Sedgwick County, Kansas.
 Legacy Bank

Brad E. Vaeger
 BRAD E. VAEGER, s.v.p.

State of Kansas) SS The foregoing instrument acknowledged before me, this 7th day of July, 2004, by Brad E. Vaeger, s.v.p. of Legacy Bank, on behalf of the bank.

Danelle K. Reichenberger
 DANELLE K. REICHENBERGER, Notary Public
 My App't. Exp. 6/11/05

This plat of "LIBERTY PARK 3RD", an Addition to Wichita, Sedgwick County, Kansas has been submitted to and approved by the Wichita-Sedgwick County Metropolitan Area Planning Commission, Wichita, Kansas.
 Dated this 7th day of July, 2004.
 Wichita-Sedgwick County Metropolitan Area Planning Commission

Ronald L. Marnell
 Ronald L. Marnell, Chair
John L. Schlegel
 John L. Schlegel, Secretary

This plat approved and all dedications shown hereon accepted by the City Council of the City of Wichita, Kansas, this 7th day of July, 2004.

Carlos Mayans
 Carlos Mayans, Mayor
Karen Sublett
 Karen Sublett, City Clerk

Reviewed in accordance with K.S.A. 58-2005 on this 7th day of July, 2004.

Tricia L. Robello, L.S. #1246
 Deputy County Surveyor
 Sedgwick County, Kansas

Entered on transfer record this 7th day of July, 2004.

Don Brace
 Don Brace, County Clerk

State of Kansas) SS This is to certify that this plat has been filed for record in the office of the Register of Deeds, this 7th day of July, 2004 at 10:00 o'clock A.M. and is duly recorded.

Bill Meek
 Bill Meek, Register of Deeds
Linda Kizzire
 Linda Kizzire, Deputy

