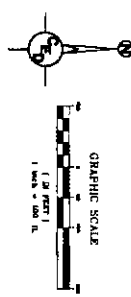
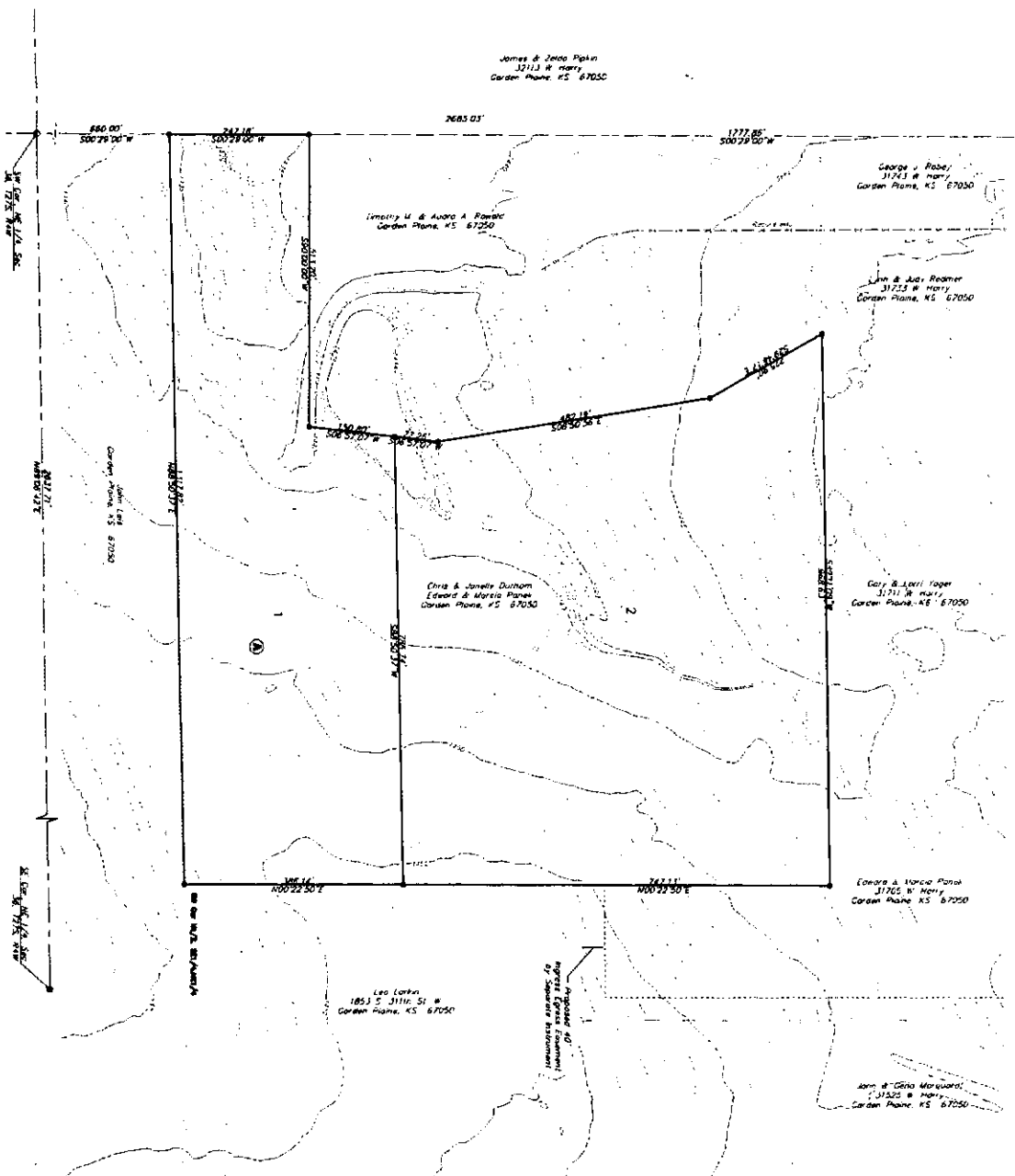


PRELIMINARY PLAT
PANEK-DURHAM ADDITION
 NE Quarter Sec. 36, Township 27 South, Range 4 West
 Sedgwick County, Kansas



LEGAL DESCRIPTION:

That part of the Northwest Quarter (NE 1/4) of Section 36, T27S, R4W of the 6th P.M., Sedgwick County, Kansas, described as follows: Commencing at the NW Corner of said NE 1/4; thence S02°30'00"W along the West line of said NE 1/4, 1777.85 feet to a Point of Beginning; thence S02°39'28"W continuing along said West line, 242.18 feet to a point 660 feet North of the SW Corner of said NE 1/4; thence N88°50'32"E, 1312.82 feet to the SW Corner of the North Half of the SE 1/4 of said NE 1/4; thence N02°24'43"E, along West line of said SE 1/4 of NE 1/4, 1133.27 feet; thence S09°11'09"W, 988.63 feet; thence S29°29'17"E, 225.90 feet; thence S85°00'58"E, 482.19 feet; thence S83°10'17"W, 228.06 feet; thence S90°00'00"W, 513.20 feet to the Point of Beginning subject to easements of record containing 24.37 acres more or less.

BENCHMARK:
 #5 Rebar found NW Corner, NE 1/4, Sec 36, T27S, R4W
 Elev. = 1448.19 NGVD

ZONING:
 RR - Rural Residential

AREA OF PLAT:
 24.37 Acres(Net)
 24.37 Acres(Gross)

DATE SURVEYED:
 September 17, 2009

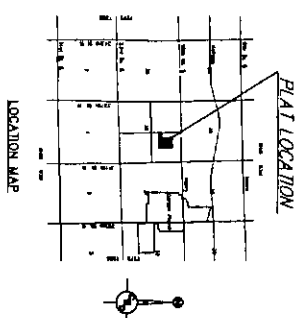
SUBJECT:
 Donald C. Armstrong LS #780
 Armstrong Land Survey P/A
 1601 E Harry
 Wichita, KS 67211
 (316) 263-0082

ENGINEER:
 Horton Foraker, P.E.
 Certified Engineering Design, P.A.
 2500 W. Douglas Suite C
 Wichita, KS 67203
 (316) 262-8808

OWNER AND SUBOWNER:
 Chris F. and Amanda L. Durnon
 1914 Sunval Court
 Goddard, KS 67052
 (316) 655-9827

Edward J. and Marcia D. Panek
 31705 W. Harry Street
 Garden Plains, KS 67050
 (316) 535-8090
CONTRIBUTOR:
 5456528, 2618275

- LEGEND**
- - "Unsurveyed" (shown from air)
 - - 1" spot level
 - - 2" spot level
 - - 3" spot level
 - - 4" spot level
 - - 5" spot level
 - - 6" spot level
 - - 7" spot level
 - - 8" spot level
 - - 9" spot level
 - - 10" spot level
 - - 11" spot level
 - - 12" spot level
 - - 13" spot level
 - - 14" spot level
 - - 15" spot level
 - - 16" spot level
 - - 17" spot level
 - - 18" spot level
 - - 19" spot level
 - - 20" spot level
 - - 21" spot level
 - - 22" spot level
 - - 23" spot level
 - - 24" spot level
 - - 25" spot level
 - - 26" spot level
 - - 27" spot level
 - - 28" spot level
 - - 29" spot level
 - - 30" spot level
 - - 31" spot level
 - - 32" spot level
 - - 33" spot level
 - - 34" spot level
 - - 35" spot level
 - - 36" spot level
 - - 37" spot level
 - - 38" spot level
 - - 39" spot level
 - - 40" spot level
 - - 41" spot level
 - - 42" spot level
 - - 43" spot level
 - - 44" spot level
 - - 45" spot level
 - - 46" spot level
 - - 47" spot level
 - - 48" spot level
 - - 49" spot level
 - - 50" spot level
 - - 51" spot level
 - - 52" spot level
 - - 53" spot level
 - - 54" spot level
 - - 55" spot level
 - - 56" spot level
 - - 57" spot level
 - - 58" spot level
 - - 59" spot level
 - - 60" spot level
 - - 61" spot level
 - - 62" spot level
 - - 63" spot level
 - - 64" spot level
 - - 65" spot level
 - - 66" spot level
 - - 67" spot level
 - - 68" spot level
 - - 69" spot level
 - - 70" spot level
 - - 71" spot level
 - - 72" spot level
 - - 73" spot level
 - - 74" spot level
 - - 75" spot level
 - - 76" spot level
 - - 77" spot level
 - - 78" spot level
 - - 79" spot level
 - - 80" spot level
 - - 81" spot level
 - - 82" spot level
 - - 83" spot level
 - - 84" spot level
 - - 85" spot level
 - - 86" spot level
 - - 87" spot level
 - - 88" spot level
 - - 89" spot level
 - - 90" spot level
 - - 91" spot level
 - - 92" spot level
 - - 93" spot level
 - - 94" spot level
 - - 95" spot level
 - - 96" spot level
 - - 97" spot level
 - - 98" spot level
 - - 99" spot level
 - - 100" spot level



PRELIMINARY PLAT
PANEK-DURHAM ADDITION
 SEDGWICK COUNTY, KANSAS
 PROJ. NO.: 20091830
CERTIFIED ENGINEERING DESIGN, P.A.
 810 WEST DOUGLAS, SUITE C
 WICHITA, KANSAS 67203
 PH.(316)262-8808 FAX.(316)262-1669
 RECORD NUMBER: 20091830
 SCALE: AS SHOWN
 SHEET: 1