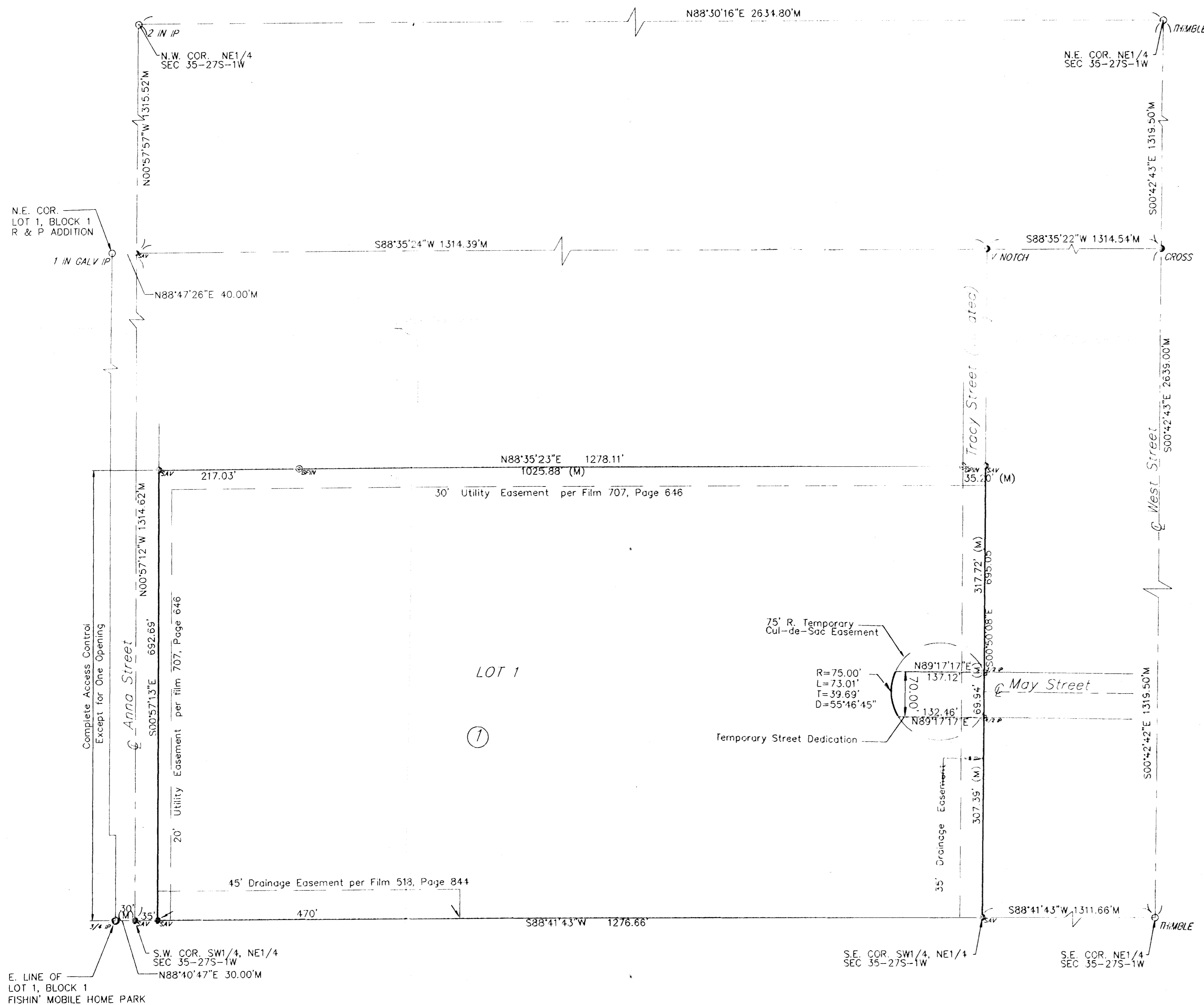
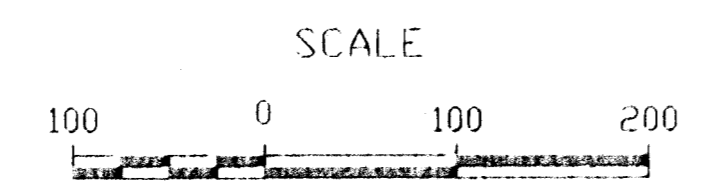


MAY FIELD FIRST ADDITION WICHITA, SEDGWICK COUNTY, KANSAS

LEGEND

- (C) = Calculated
- (M) = Measured
- (P) = Platted
- (R) = Record
- C.A.C. = Complete Access Control
- R.O.W. = Right-of-Way
- = BPIN (found)
- = 1/2" Iron Pipe (found)
- = 3/4" Iron Pipe (found)
- SAV = 1/2" Rebar W/SAVOY CAP (set)
- THIMBLE ○ = City of Wichita Control Thimble(Found)
- 1 IN GALV IP ○ = 1" Galvanized Iron Pipe(Found)
- 2 IN IP ○ = 2" Iron Pipe(Found)
- CROSS ○ = Cross Chiseled in Concrete(Set)
- V NOTCH ○ = V-notch Chiseled in Concrete(Set)

BENCHMARK
City of Wichita Std. Disc.
West side of Anna and south line of drive into trailer park.
125' S. of West 1/4 corner.
Elevation = 1297.5 NGVD



State of Kansas) ss
Sedgwick County) ss

I, the undersigned licensed land surveyor in aforesaid county and state, do hereby certify that, under the supervision of the undersigned, we, Savoy Company, P.A. have surveyed and platted "MAY FIELD FIRST ADDITION", Wichita, Sedgwick County, Kansas and that the accompanying plat is a true and correct exhibit of the property surveyed, described as follows:

The SW1/4 of the NE1/4 of Sec. 35, Twp. 27-S, R-1-W of the 6th P.M., Sedgwick County, Kansas, except the north 622 feet thereof, and except the west 35 feet thereof

Existing public dedications, rights of way, and easements being vacated by virtue of K.S.A. 12-512(b).

State of Kansas) ss
City of Wichita) ss

This plat approved and all dedications shown hereon accepted by the City Council of the City of Wichita, Kansas, this ____ day of _____, 2005. At the Direction of the City Council.

_____, Mayor
 _____, City Clerk
 _____, County Clerk

State of Kansas) ss
Sedgwick County) ss

This is to certify that this instrument was filed for record in the Register of Deeds office at ____ o'clock ____ .m., on the ____ day of _____, 2005, and is duly recorded.

_____, Register of Deeds
 _____, Deputy

State of Kansas) ss
Sedgwick County) ss

Reviewed in accordance with K.S.A. 58-2005 on this ____ day of _____, 2005.

C & C Development, L.L.C.

By: _____
 Name: _____
 Title: _____

State of Kansas) ss
Sedgwick County) ss

BE IT REMEMBERED that on this 17th day of February, 2005, before me, the undersigned, a notary public in and for the County and State aforesaid came Cay Mueck CFO C & C Development, L.L.C. to me personally known to be the same person who executed this instrument and such person duly acknowledged the execution of the same.

IN WITNESS WHEREOF, I have hereunto set my hand and affixed my official seal the day and year first above written.

Oct. 11, 2005
 My appointment expires _____

 Notary Public
 R. Aushin

We, Pioneer Bank & Trust, by L.D. Carney, Branch Manager, holders of a mortgage on the above described property do hereby consent to the plat of "May Field First Addition", Wichita, Sedgwick County, Kansas

Pioneer Bank & Trust

L.D. Carney, Branch Manager

State of Kansas) ss
Sedgwick County) ss

BE IT REMEMBERED that on this ____ day of _____, 2005, before me, the undersigned, a notary public in and for the County and State aforesaid came L.D. Carney, Branch Manager, Pioneer Bank & Trust, to me personally known to be the same person who executed this instrument and such person duly acknowledged the execution of the same

IN WITNESS WHEREOF, I have hereunto set my hand and affixed my official seal the day and year first above written.

Notary Public
 My appointment expires _____

State of Kansas) ss
Sedgwick County) ss

This plot of "MAY FIELD FIRST ADDITION", Wichita, Sedgwick County, Kansas has been submitted to and approved by the Wichita/Sedgwick County Metropolitan Area Planning Commission, Wichita, Kansas.

Dated this ____ day of _____, 2005.
 Wichita/Sedgwick County Metropolitan Area Planning Commission.

_____, Chair
 Morris K. Dunlap
 _____, Secretary
 John L. Schlegel

State of Kansas) ss
City of Wichita) ss

This plat approved and all dedications shown hereon accepted by the City Council of the City of Wichita, Kansas, this ____ day of _____, 2005. At the Direction of the City Council.

_____, Mayor
 Carlos Mayans
 _____, City Clerk
 Karen Sublett
 _____, County Clerk
 Don Brace

State of Kansas) ss
Sedgwick County) ss

This is to certify that this instrument was filed for record in the Register of Deeds office at ____ o'clock ____ .m., on the ____ day of _____, 2005, and is duly recorded.

_____, Register of Deeds
 Bill Meek
 _____, Deputy
 Linda Kizzire

State of Kansas) ss
Sedgwick County) ss

Reviewed in accordance with K.S.A. 58-2005 on this ____ day of _____, 2005.



Tricia L. Robell # 1246
 Deputy County Surveyor
 Sedgwick County, Kansas



Savoy Company, P.A.
 Land Surveyors
 535 S. Emporia, Suite 104, Wichita, KS 67202
 PH (316) 265-0005
 FAX (316) 265-0275
 www.savoyco.com



POE & ASSOCIATES, INC.
 CONSULTING ENGINEERS
 1940 E. Central Suite 200 • Wichita, KS 67208-4212
 Phone 316-685-4114 • FAX 316-685-4112