

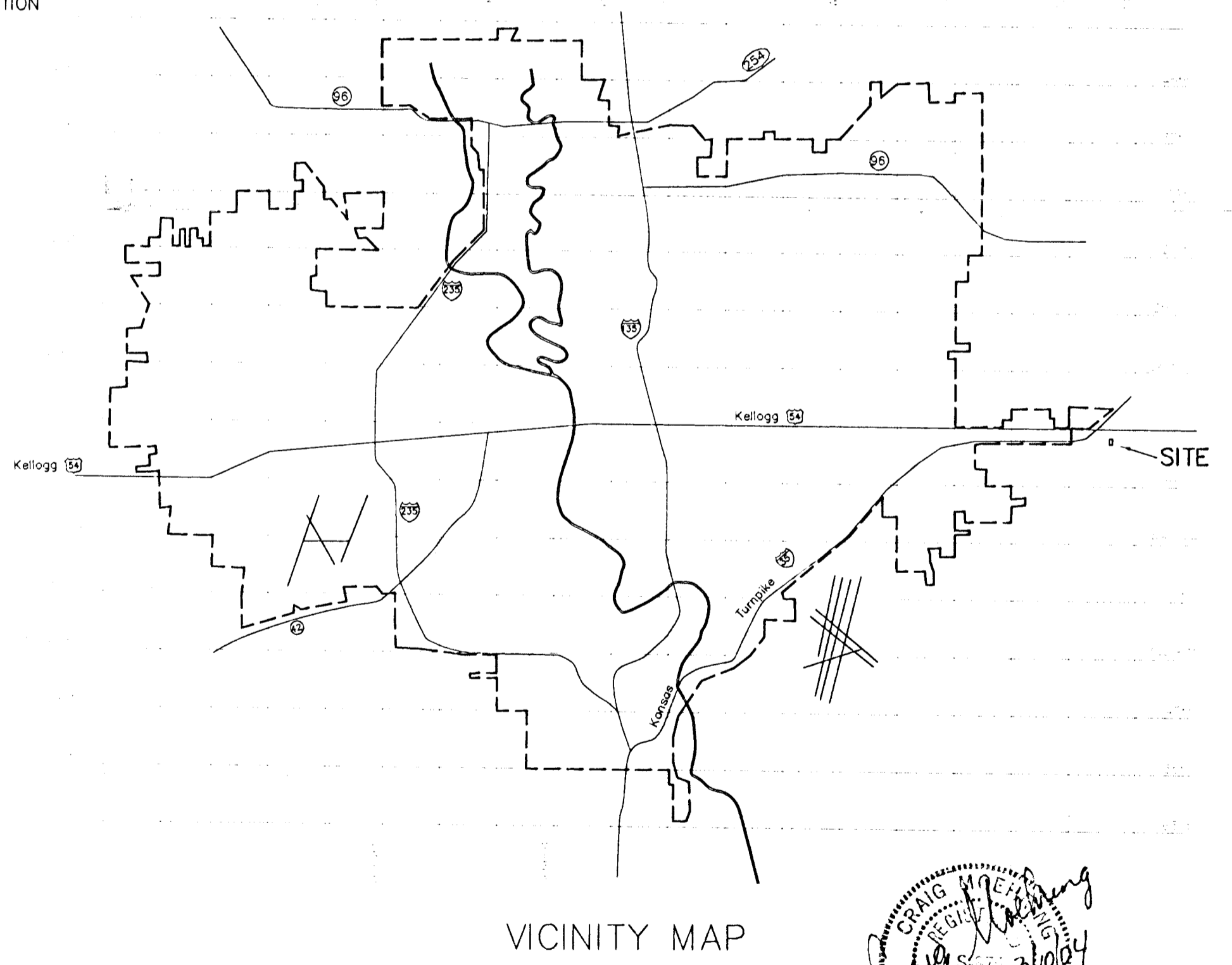
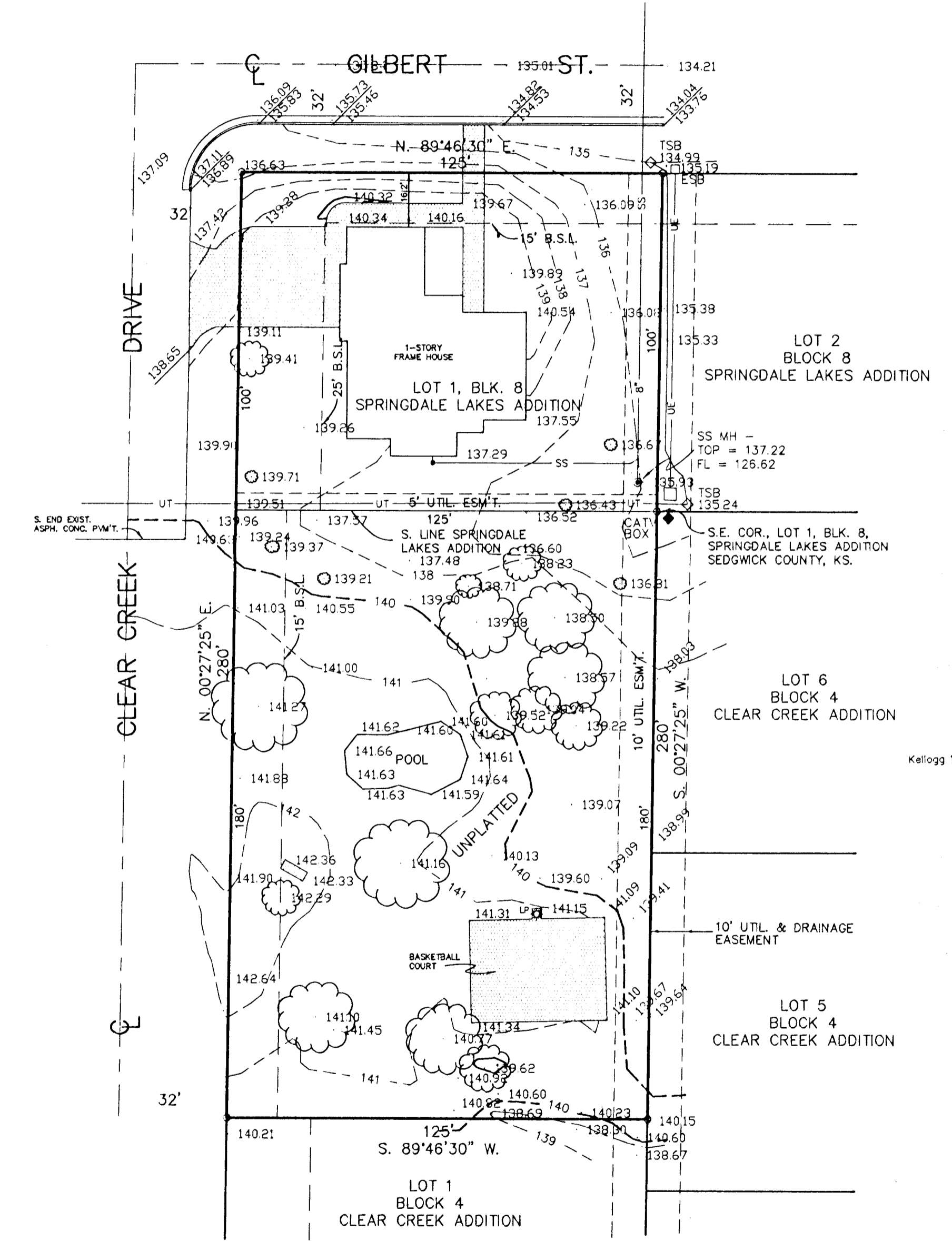
LEGEND

W = WATER MAIN
 FH = FIRE HYDRANT
 WV = WATER VALVE
 G = GAS MAIN
 GM = GAS METER
 SS = SANITARY SEWER
 OE = OVERHEAD ELECTRIC
 UP = UTILITY POLE
 LP = LIGHT POLE
 UE = UNDERGROUND ELECTRIC

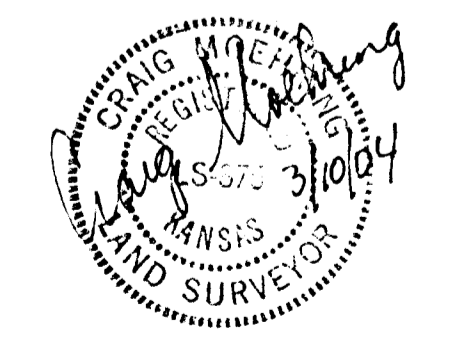
PRELIMINARY PLAT
 of
MONIQUE'S ADDITION
 Wichita, Sedgwick County, Kansas

LEGAL DESCRIPTION

LOT 1, BLOCK 8, SPRINGDALE LAKES ADDITION, TO SEDGWICK COUNTY, KANSAS, TOGETHER WITH A TRACT IN THE N.E. QUARTER OF SECTION 26, TOWNSHIP 27 SOUTH, RANGE 2 EAST OF THE 6TH P.M., SEDGWICK COUNTY, KANSAS, DESCRIBED AS BEGINNING AT THE S.W. CORNER OF LOT 1, BLOCK 8, SPRINGDALE LAKES ADDITION, SEDGWICK COUNTY, KANSAS; THENCE EASTERLY ALONG THE SOUTH LINE OF SAID LOT 1, 125.00 FEET TO THE REAR CORNER COMMON TO SAID LOT 1 AND LOT 2, IN SAID BLOCK 8; THENCE SOUTHERLY ALONG THE LOT LINE COMMON TO SAID LOTS 1 AND 2, AS EXTENDED SOUTHERLY, 180.00 FEET; THENCE WESTERLY PARALLEL WITH THE SOUTH LINE OF SAID LOT 1, 125.00 FEET TO THE INTERSECTION WITH THE WEST LINE OF SAID LOT 1, AS EXTENDED SOUTHERLY; THENCE NORTHERLY ALONG SAID EXTENDED WEST LINE, 180.00 FEET TO THE POINT OF BEGINNING.



BENCHMARK
 SQUARE CUT ON TOP OF CURB, N.E. CORNER OF GILBERT & CLEAR CREEK DRIVE. ELEV. = 136.31 CITY DATUM.



MOHRING & ASSOCIATES
 CONSULTING ENGINEERS
 433 S. HYDRAULIC
 WICHITA, KANSAS
 263-8291

C:\SC2000\WORK\MONIQUE\PRE.DWG