

Preliminary Plat

PRAIRIE MEADOW ESTATES

An Addition to Sedgwick County, Kansas

LEGAL DESCRIPTION

The NE 1/4 of Sec. 11, Twp. 29-S, R-2-W of the 6th P.M., Sedgwick County, Kansas, except the east 480.41 feet thereof (as measured perpendicular to the east line of said NE 1/4, and Lot 1, Block 1, North Wood Estates, Sedgwick County, Kansas.

OWNER:
J.C. Land Development, Inc.
9415 E. Holly
Wichita, Kansas 67207
Ph. 684-0161

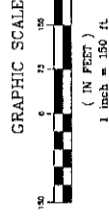
GROSS AREA:
57707.51 Sq. Ft. ±
1.32478 Acres ±

NET AREA:
52453.00 Sq. Ft. ±
1.20508 Acres ±

MINIMUM LOT SIZE:
196822.53 Sq. Ft. ±
4.52 Acres ±

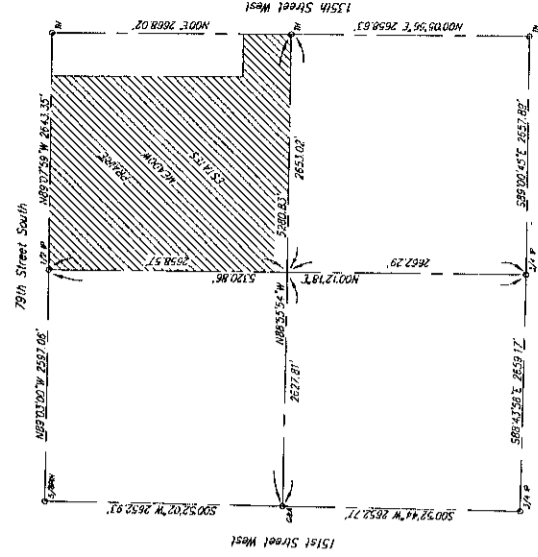
EXISTING ZONING: RR - Rural Residential

CONTROL NO. 284173

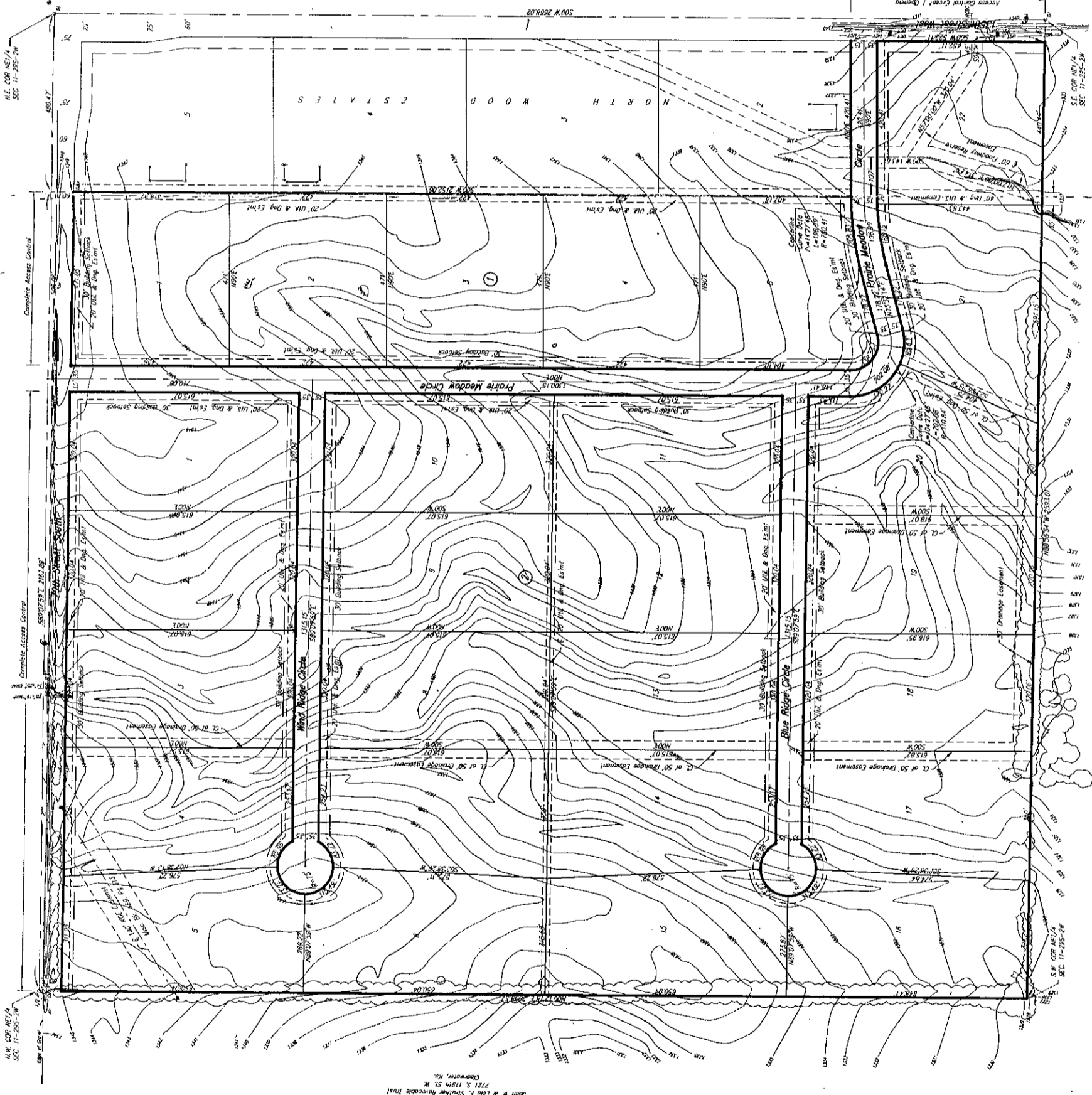


Surveyed by: J.C. Land Development, Inc.
Surveyed on: 10/17/07
Elevation: 1148.65 MGD
North Arrow: 190° 00' 00" (True)
100' N. & 40' W. of S.E. Cor. NE 1/4 Sec. 11-29S-2W
Elevation: 1138.65 MGD

- USP = 1/2" IRON PIPE (FOUND)
- ASP = 1/4" IRON PIPE (FOUND)
- SPSP = 3/8" STEEL PIPE (FOUND)
- SP = 1/2" REBAR (DEPTH & ASSOC. CAP (FOUND))
- AP = CAST IRON CENTER THUMB (FOUND)



Sec. 11, Twp. 29-S, R-2-W



UNPLATTED
Control No. 284173
J.C. Land Development, Inc.
2721 S. 19th St., W.
Wichita, KS 67207

ENGINEERING SERVICES PROVIDED BY:
CERTIFIED ENGINEERING DESIGN, P.A.
810 WEST DOUGLAS, SUITE C
WICHITA, KANSAS 67203
PHONE: (316) 262-8608
FAX: (316) 262-8608
www.ced-engineering.com

SHEET	1
TOTAL	1

Savooy Company, P.A.
Land Surveyors
385 S. Emporia, Suite 104, Wichita, KS 67202
PH: (316) 262-0000
FAX: (316) 262-0005
www.savooy.com