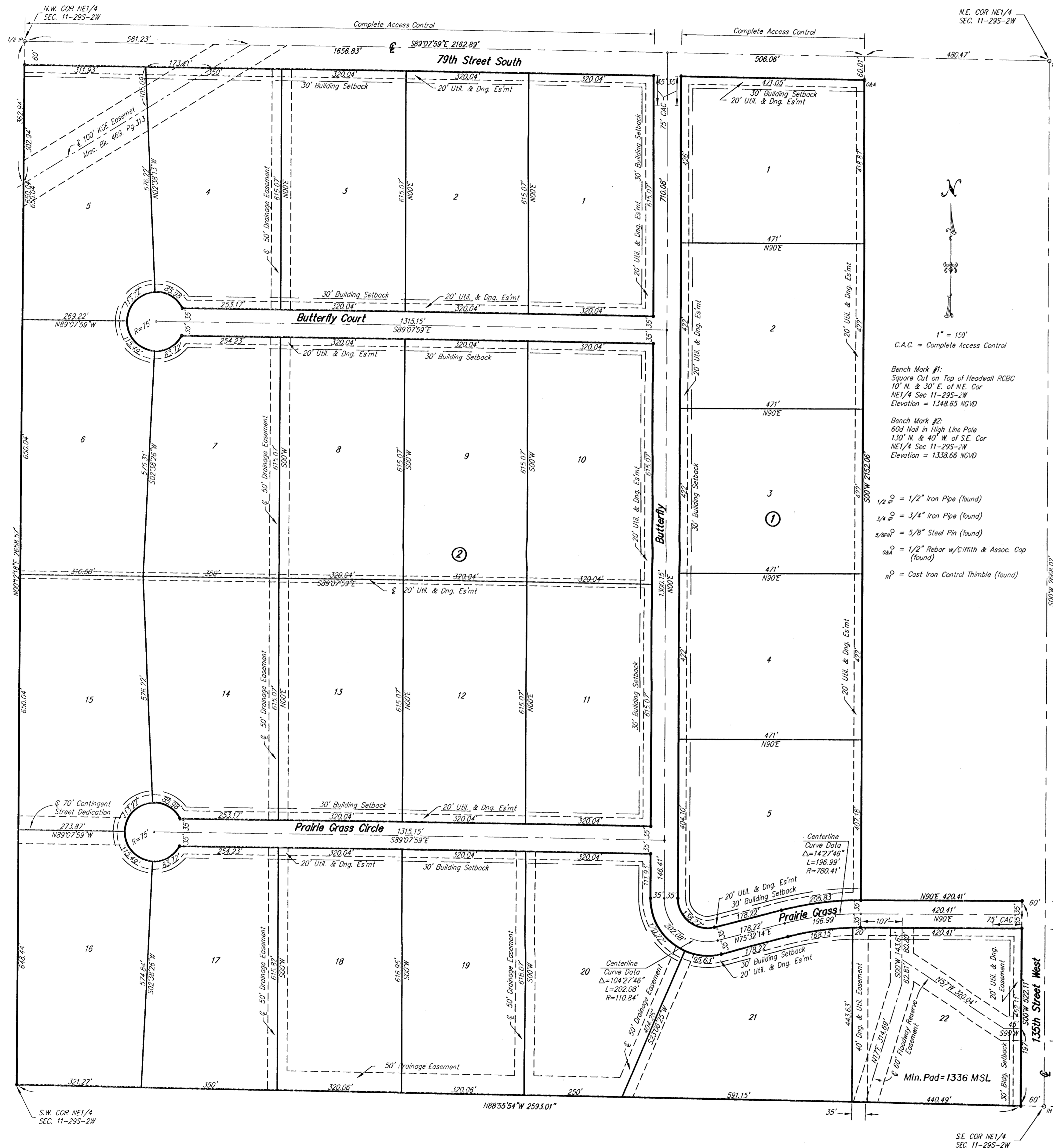


Neither party acknowledges that this drawing is accurate or to scale except that which concerns said encroachment.

Please contact Westar Energy (or its successor) Electric Transmission Line Engineering Department (currently 785-575-8167) before conducting any proposed construction activities that could place people, equipment or facilities within Westar Energy's easement, shown on this plat, designated as Book 469M Page 313 date August 11, 1960.

PRAIRIE MEADOW ESTATES

An Addition to Sedgwick County, Kansas



State of Kansas) SS
Sedgwick County)

We, Savoy Company, P.A., Surveyors in aforesaid county and state do hereby certify that, under the supervision of the undersigned, we have surveyed and platted "PRAIRIE MEADOW ESTATES", an Addition to Sedgwick County, Kansas and that the accompanying plat is a true and correct exhibit of the property surveyed, described as follows:

Replat of Lot 1, Block 1, North Wood Estates, Sedgwick County, Kansas, together with the NE1/4 of Sec. 11, Twp. 29-S, R-2-W of the 6th P.M., Sedgwick County, Kansas, except the east 480.41 feet thereof (as measured perpendicular to the east line of said NE1/4).

All Public easements and dedications being vacated by virtue of K.S.A. 12-512(b).

Date: _____ Savoy Company, P.A. Surveyor



Know all men by these presents that we, the undersigned, have caused the land described in the surveyors certificate to be platted into Lots, Blocks and Streets to be known as "PRAIRIE MEADOW ESTATES", an Addition to Sedgwick County, Kansas. The Streets are hereby dedicated to and for the use of the public. The utility and drainage easements are hereby granted as indicated for the construction and maintenance of all public utilities and for drainage purposes. The drainage easements are hereby granted as indicated for drainage purposes. The Floodway Reserves are hereby granted for floodway purposes, and shall be the responsibility of the owner of Lot 22, until such time as the governing body exercising jurisdiction elects to assume the responsibility for maintenance and improvement of drainage, provided further that no structure shall be constructed on or within said Floodway Reserve, nor shall any fill, change of grade, creation of channel or other work be carried on without the permission of the Engineer of the appropriate governing body. A drainage plan has been developed for this plat and all drainage easements and rights-of-way shall remain at established grades or modified with the approval of the Engineer of the appropriate governing body, and unobstructed to allow for the conveyance of stormwater. Access controls are hereby granted to the appropriate governing body as indicated on the face of the plat. The contingent street dedication is hereby dedicated to and for the use of the public, contingent upon the need for the right of way to conn with a future street dedication to the west.

Jerry L. Falke, President
 Jerry L. Falke

State of Kansas) SS
Sedgwick County)

The foregoing instrument acknowledged before me, this _____ day of _____, 2004, by Jerry L. Falke, President of JC Land Development, Inc., on behalf of the corporation.

My App'l. Exp _____ Notary Public

This plat of "PRAIRIE MEADOW ESTATES", an Addition to Sedgwick County, Kansas, has been submitted to and approved by the Wichita-Sedgwick County Metropolitan Area Planning Commission, Wichita, Kansas. Dated this _____ day of _____, 2004.

Wichita-Sedgwick County Metropolitan Area Planning Commission

Chairman: Ronald Marnell
 Secretary: John L. Schlegel

This plat approved and all dedications shown hereon, are hereby accepted by the Board of County Commissioners, Sedgwick County, Kansas, this day _____ of _____, 2004.

Chairman: Tom Winters
 County Clerk: Don Brace

Entered on transfer record this _____ day of _____, 2004.

County Clerk: Don Brace

Reviewed in accordance with K.S.A. 58-2005 on this 23rd day of July, 2004.

Deputy County Surveyor: Tricia L. Roberts, L.S. #1246

State of Kansas) SS
Sedgwick County)

This is to certify that this plat has been filed for record in the office of the Register of Deeds, this _____ day of _____, 2004, at _____ o'clock _____ M. and is duly recorded.

Register of Deeds: Bill Meek
 Deputy: Linda Kizzire

We, the undersigned, holders of a mortgage on a portion of the above described property, do hereby consent to this plat of "PRAIRIE MEADOW ESTATES", an Addition to Sedgwick County, Kansas.

Emprise Bank
 Sam E. Trummel, Sr. V.P.

State of Kansas) SS
Sedgwick County)

The foregoing instrument acknowledged before me, this 26th day of July, 2004, by Sam E. Trummel, Sr. Vice Pres of Emprise Bank, on behalf of the Bank.

My App'l. Exp 2/5/2006 Kellie D. Greiss Notary Public

