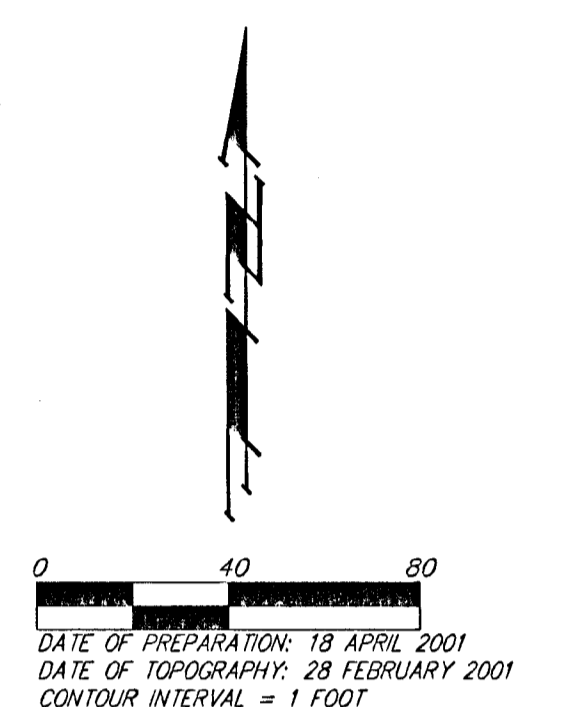


DRAINAGE CONCEPT NIES 4TH ADDITION WICHITA, SEDGWICK COUNTY, KANSAS

Drainage Data Hydrologic Soil Type "D"	
Existing Conditions	Proposed Conditions
O.A. = 4.4 acres	O.A. = 4.4 acres
T _s = 15 min	T _s = 15 min
C _s = 0.30	C _s = 0.90
C _s = 0.35	C _s = 0.90
C _{sw} = 0.65	C _{sw} = 0.90
Q ₂ = 5.1	Q ₂ = 15
Q ₅ = 7.0	Q ₅ = 18
Q ₁₀ = 21	Q ₁₀ = 29

Drainage Data Hydrologic Soil Type "D"	
Existing Conditions	Proposed Conditions
O.A. = 0.8 acres	O.A. = 0.8 acres
T _s = 15 min	T _s = 15 min
C _s = 0.30	C _s = 0.90
C _s = 0.35	C _s = 0.90
C _{sw} = 0.65	C _{sw} = 0.90
Q ₂ = 0.9	Q ₂ = 2.8
Q ₅ = 1.3	Q ₅ = 3.3
Q ₁₀ = 3.8	Q ₁₀ = 5.3



DATE OF PREPARATION: 18 APRIL 2001
DATE OF TOPOGRAPHY: 28 FEBRUARY 2001
CONTOUR INTERVAL = 1 FOOT

(C) = Calculated
(P) = Plotted
(M) = Measured
(D) = Described

● = #4 REBAR W/ "BAUGHMAN" CAP (SET)
○ = #4 S.R.B. REBAR (FOUND)
□ = #5 GARBED CAPPED REBAR (FOUND)
⊗ = 1" IRON PIPE IN THIMBLE (FOUND)
⊙ = 3/4" IRON PIPE (FOUND)
⊛ = #4 REBAR W/ "BAUGHMAN" CAP (FOUND)

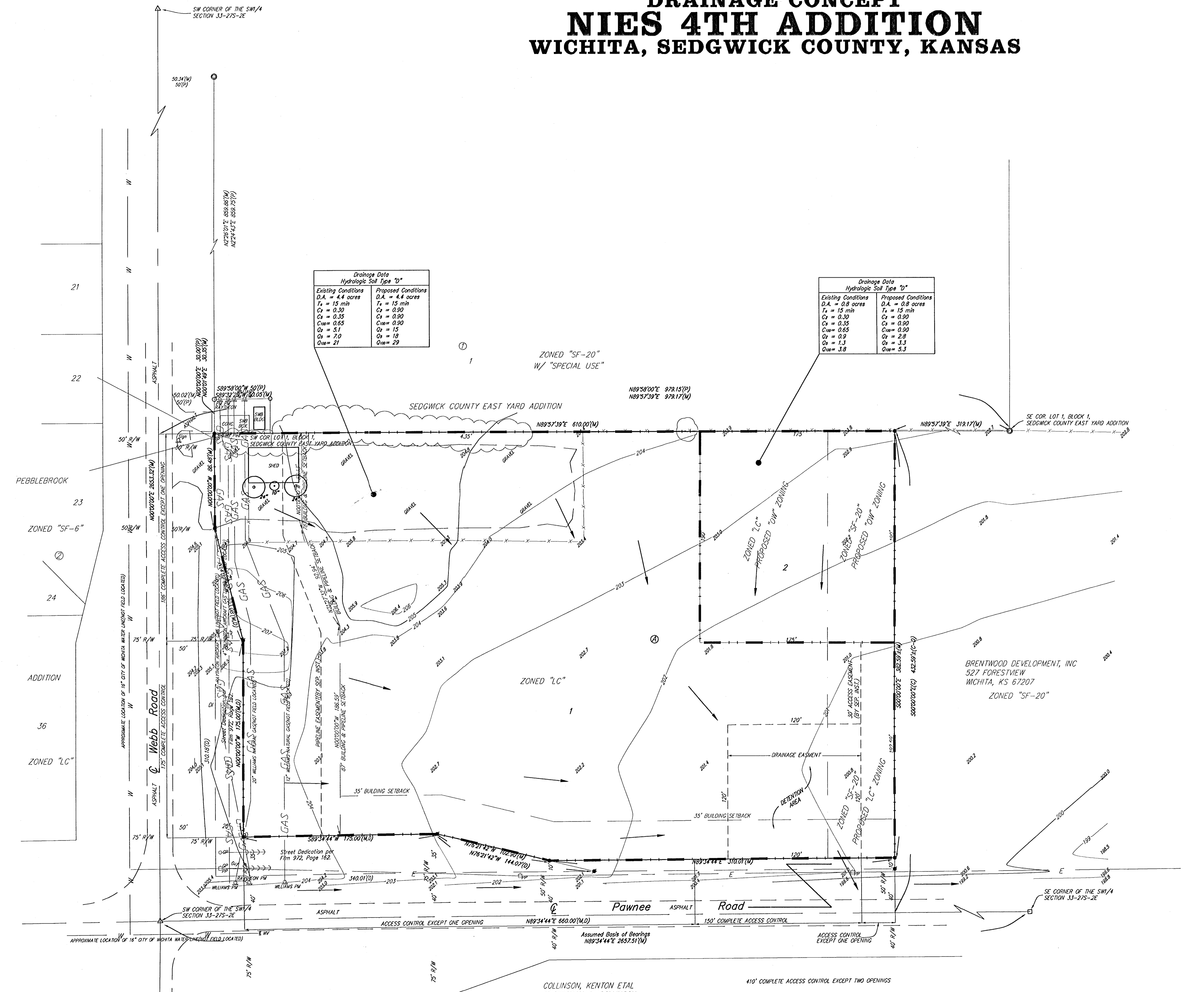
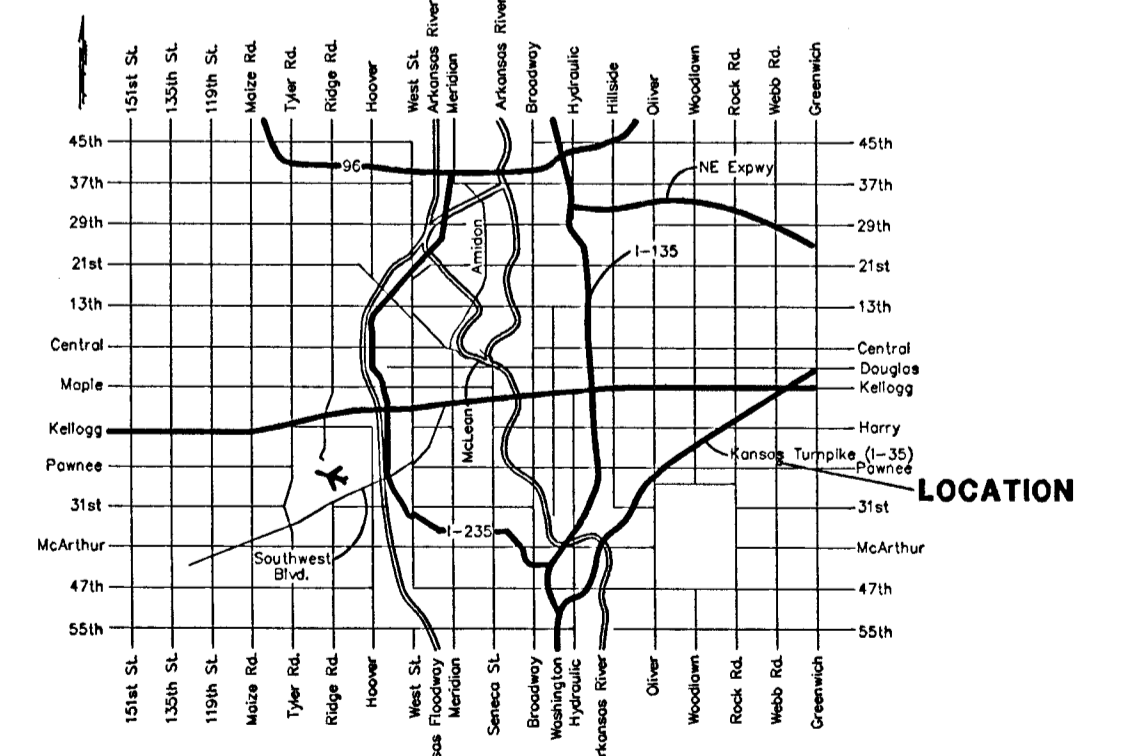
PP □ = Power Pole
gp ○ = Guy Pole
Guy = Guy Anchor
PM ⊙ = Pipeline Marker
Sign ⊠ = Sign
SWB Post ⊕ = Southwestern Bell Pedestal
T ⊙ = Tree
WV ⊕ = Water Valve

OWNER AND SUBDIVIDER:
Nies Investments, L.P.
3415 E. Horry
Wichita, KS 67207
(316) 884-0161

LEGAL DESCRIPTION:
The south 600 feet of the west 660 feet of the SW 1/4, Section 33, Twp. 27-S, Rwp. 27-S, R-2-E of the 6th P.M., Sedgwick County, Kansas, EXCEPT that part platted as Sedgwick County East Yard Addition, and EXCEPT existing road rights-of-way.

BENCHMARK:
COW disc SW corner of intersection 53' south and 42' west of centerline.
Elev. = 205.68 City Datum

NOTE:
Intersection improvements are currently under construction. The topography shown on this plot is accurate as of February 28, 2001.



COLLINSON, KENTON ETAL
% STEPHAN A. COLLINSON
P.O. BOX 642
WICHITA, KS 67206

410' COMPLETE ACCESS CONTROL EXCEPT TWO OPENINGS