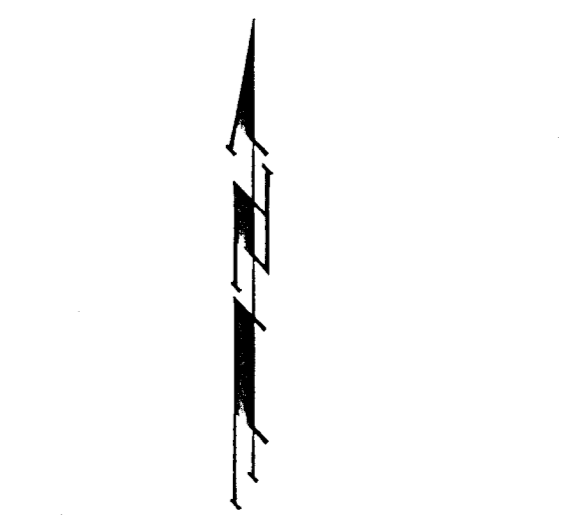
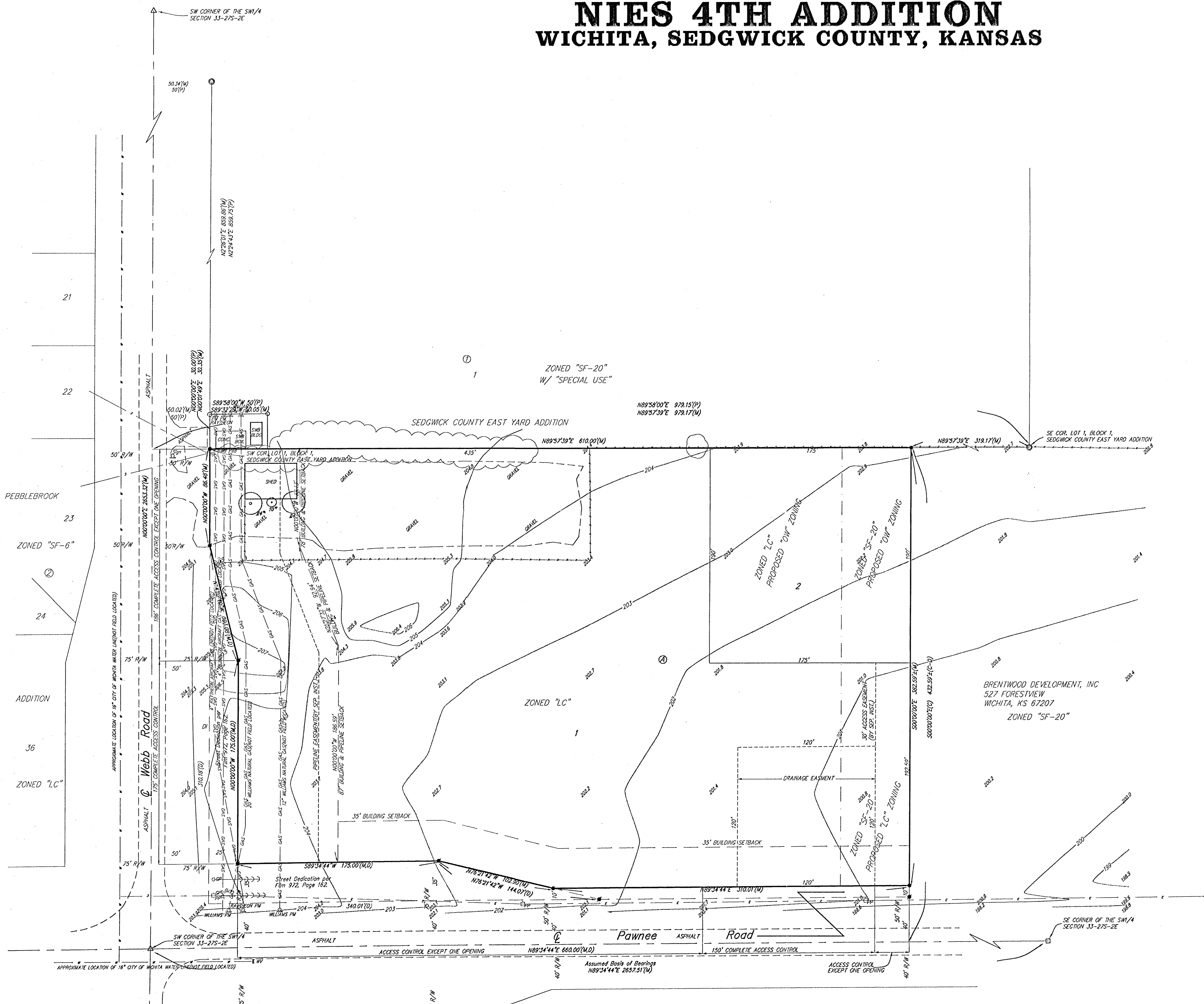


PRELIMINARY PLAT
NIES 4TH ADDITION
 WICHITA, SEDGWICK COUNTY, KANSAS



DATE OF PREPARATION: 18 APRIL 2001
 DATE OF TOPOGRAPHY: 28 FEBRUARY 2001
 CONTOUR INTERVAL = 1 FOOT

(C) = Calculated
 (P) = Plotted
 (M) = Measured
 (D) = Described

● = #4 REBAR W/ "BAUGHMAN" CAP (SET)
 ○ = #4 S.R.B. REBAR (FOUND)
 □ = #5 CARBER CAPPED REBAR (FOUND)
 X = 1" IRON PIPE IN THIMBLE (FOUND)
 ● = 3/4" IRON PIPE (FOUND)
 ○ = #4 REBAR W/ "BAUGHMAN" CAP (FOUND)

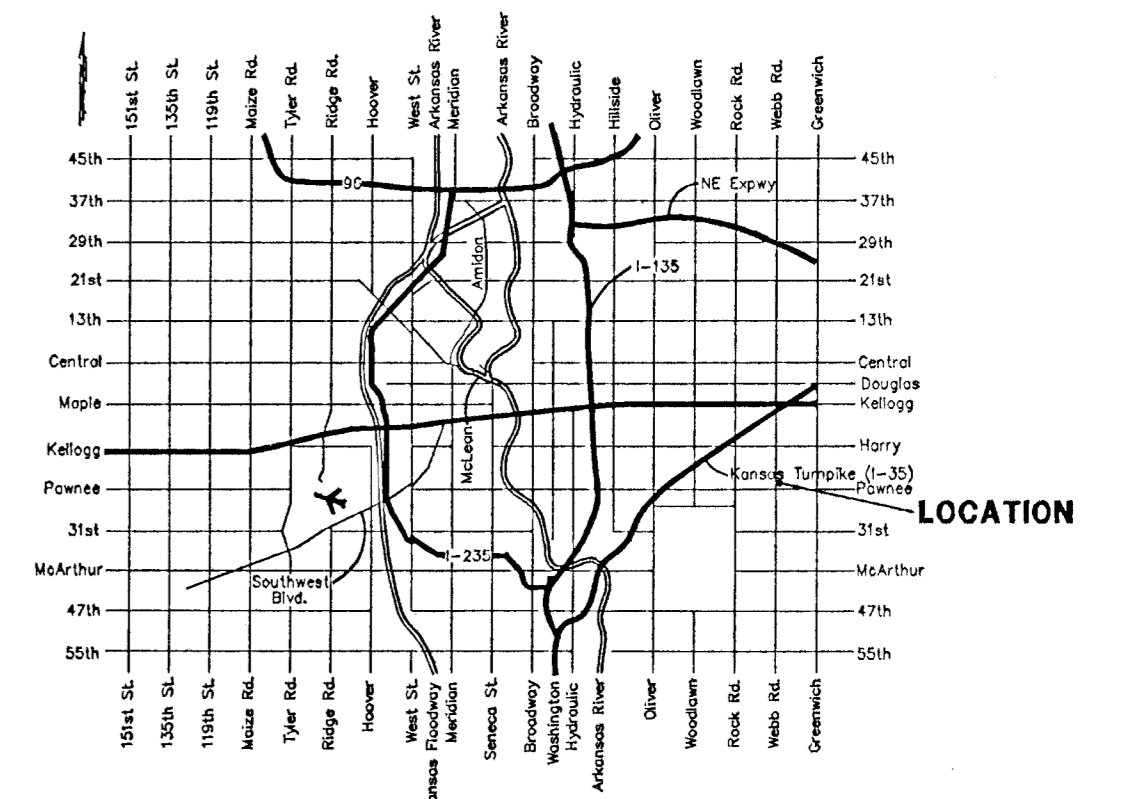
PP ○ = Power Pole
 GP ○ = Guy Pole
 GuyC = Guy Anchor
 PW ○ = Pipeline Marker
 Sign ○ = Sign
 SWB Ped ○ = Southwestern Bell Pedestal
 T ○ = Tree
 WV ○ = Water Valve

OWNER AND SUBDIVIDER:
 Nies Investments, L.P.
 3415 E. Hwy
 Wichita, KS 67207
 (316) 684-0161

LEGAL DESCRIPTION:
 The south 600 feet of the west 660 feet of the SW 1/4, Section 33, Twp. 27-S, Rwp. 27-S, R-2-E of the 6th P.M., Sedgwick County, Kansas, EXCEPT that part platted as Sedgwick County East Yard Addition, and EXCEPT existing road rights-of-way.

BENCHMARK:
 COW disc SW corner of intersection 53' south and 42' west of centerline.
 Elev. = 205.68 City Datum

NOTE:
 Intersection improvements are currently under construction. The topography shown on this plat is accurate as of February 28, 2001.



COLLINSON, KENTON ETAL
 & STEPHAN A. COLLINSON
 P.O. BOX 642
 WICHITA, KS 67206