

NIES 4TH ADDITION WICHITA, SEDGWICK COUNTY, KANSAS

State of Kansas) SS We, Baughman Company, P.A., Surveyors in aforesaid county and state do hereby certify that we have surveyed and platted "NIES 4TH ADDITION", Wichita, Sedgwick County, Kansas and that the accompanying plat is a true and correct exhibit of the property surveyed, described as the south 600 feet of the west 660 feet of the SW 1/4, Section 33, Twp. 27-S, R-2-E of the 6th P.M., Sedgwick County, Kansas, EXCEPT that part platted as Sedgwick County East Yard Addition, and EXCEPT existing road rights-of-way.

Existing public easements and dedications being vacated by virtue of K.S.A. 12-512(b).

Baughman Company, P.A.

Know all men by these presents that we, the undersigned, have caused the land in the surveyors certificate to be platted into Lots, a Block, and Streets, to be known as "NIES 4TH ADDITION", Wichita, Sedgwick County, Kansas. The utility easement is hereby granted as indicated for the construction and maintenance of all public utilities. The drainage easement is hereby granted as indicated for drainage purposes. The streets are hereby dedicated to and for the use of the public. Access controls shall be as depicted on the face of the plat and are hereby granted to the City of Wichita, Kansas. The permitted opening locations shall be as determined by the City Engineer of the City of Wichita, Kansas. The Minimum Building Pad Elevations for the lowest opening to the structures shall be as indicated on the face of the plat.

Nies Investments, L.P.

Clifford A. Nies, General Partner
Clifford A. Nies

State of Kansas) SS The foregoing instrument acknowledged before me, this 11th day of SEPTEMBER, 2001, by Clifford A. Nies, General Partner of Nies Investments, L.P., on behalf of the limited partnership.

JUDITH M. TERHUNE
Notary Public, State of Kansas
My Appt. Expires 11-7-2001

Judith M. Terhune, Notary Public

My App't. Exp. 11-7-2001

This plat of "NIES 4TH ADDITION", Wichita, Sedgwick County, Kansas has been submitted to and approved by the Wichita-Sedgwick County Metropolitan Area Planning Commission, Wichita, Kansas.

Dated this _____ day of _____, 2001.
Wichita-Sedgwick County Metropolitan Area Planning Commission

_____, Acting Chair
J. D. Michaelis

_____, Secretary
Marvin S. Krout

This plat approved and all dedications shown hereon accepted by the City Council of the City of Wichita, Kansas, this _____ day of _____, 2001.

At the Direction of the City Council

_____, City Manager
Chris Cherches

_____, City Clerk
Pat Burnett

Reviewed in accordance with K.S.A. 58-2005 on this _____ day of _____, 2001.

Tricia L. Robella, L.S. #1246
Deputy County Surveyor
Sedgwick County, Kansas

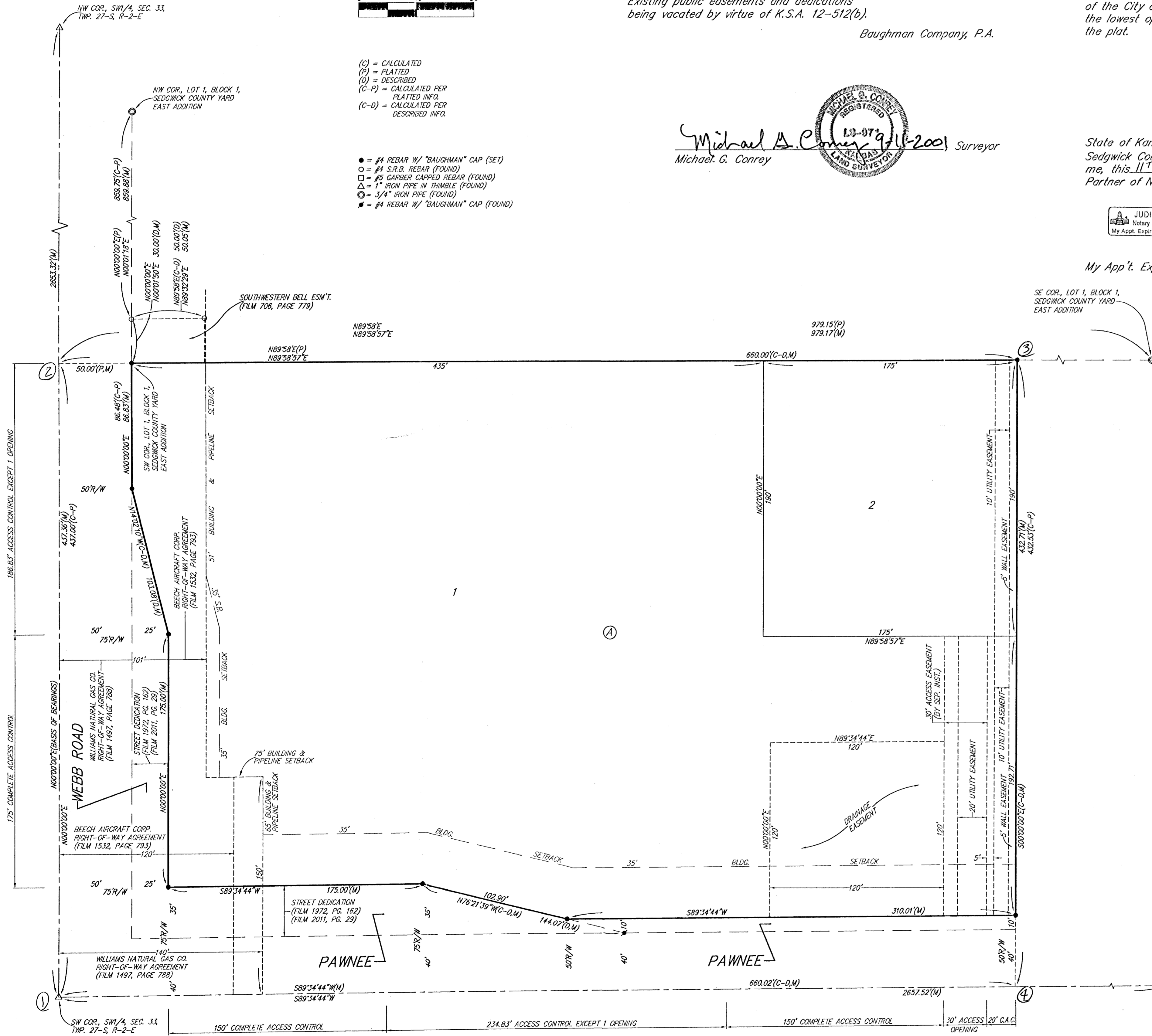
Entered on transfer record this _____ day of _____, 2001.

_____, County Clerk
Don Brace

State of Kansas) SS This is to certify that this plat has been filed for record in the office of the Register of Deeds, this _____ day of _____, 2001 at _____ o'clock _____ M.; and is duly recorded.

_____, Register of Deeds
Bill Meek

_____, Deputy
Linda Kizzire



- (C) = CALCULATED
- (P) = PLATTED
- (D) = DESCRIBED
- (C-P) = CALCULATED PER PLATTED INFO.
- (C-D) = CALCULATED PER DESCRIBED INFO.

- = #4 REBAR W/ "BAUGHMAN" CAP (SET)
- = #4 S.P.B. REBAR (FOUND)
- = #5 CARBIDE CAPPED REBAR (FOUND)
- △ = 1" IRON PIPE IN THIMBLE (FOUND)
- = 3/4" IRON PIPE (FOUND)
- = #4 REBAR W/ "BAUGHMAN" CAP (FOUND)

Michael G. Conroy, Surveyor
Michael G. Conroy



BENCHMARK:
CITY OF WICHITA BENCHMARK DISC -
SOUTHWEST CORNER OF INTERSECTION
OF PAWNEE AND WEBB ROAD.
53.00' SOUTH OF CENTERLINE
47.00' WEST OF CENTERLINE
19.70' SW OF CENTER OF POWER POLE
8.50' SE OF CUIV POLE
70.50' SW OF SECTION CORNER IRON
ELEV. = 205.68 CITY DATUM
(1983.08 NGVD 29)

MINIMUM BUILDING PAD ELEVATIONS FOR LOWEST OPENING TO THE STRUCTURES		
LOTS	BLOCK	ELEVATION CITY DATUM
1, 2	A	203.0

NOTES:
A DRAINAGE PLAN HAS BEEN DEVELOPED FOR THIS SUBDIVISION AND IS ON FILE WITH THE CITY OF WICHITA, KANSAS. DRAINAGE INTENT SHALL REMAIN AS DEPICTED OR AS MODIFIED WITH THE APPROVAL OF THE CITY ENGINEER OF THE CITY OF WICHITA, KANSAS. NO OBSTRUCTIONS WHICH IMPED THE FLOW OF THIS DRAINAGE PLAN SHALL BE ALLOWED.