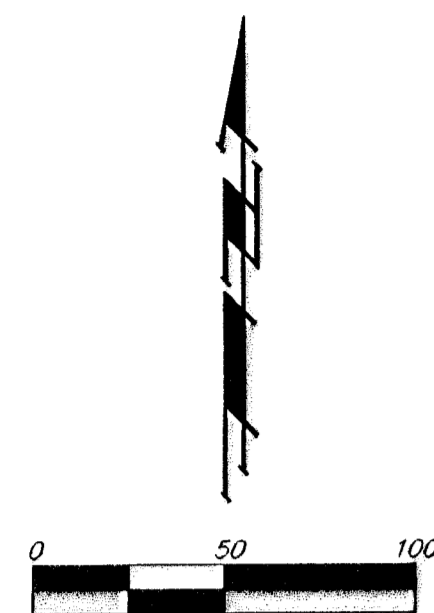


PRAIRIE VILLA AT BEACON HILL

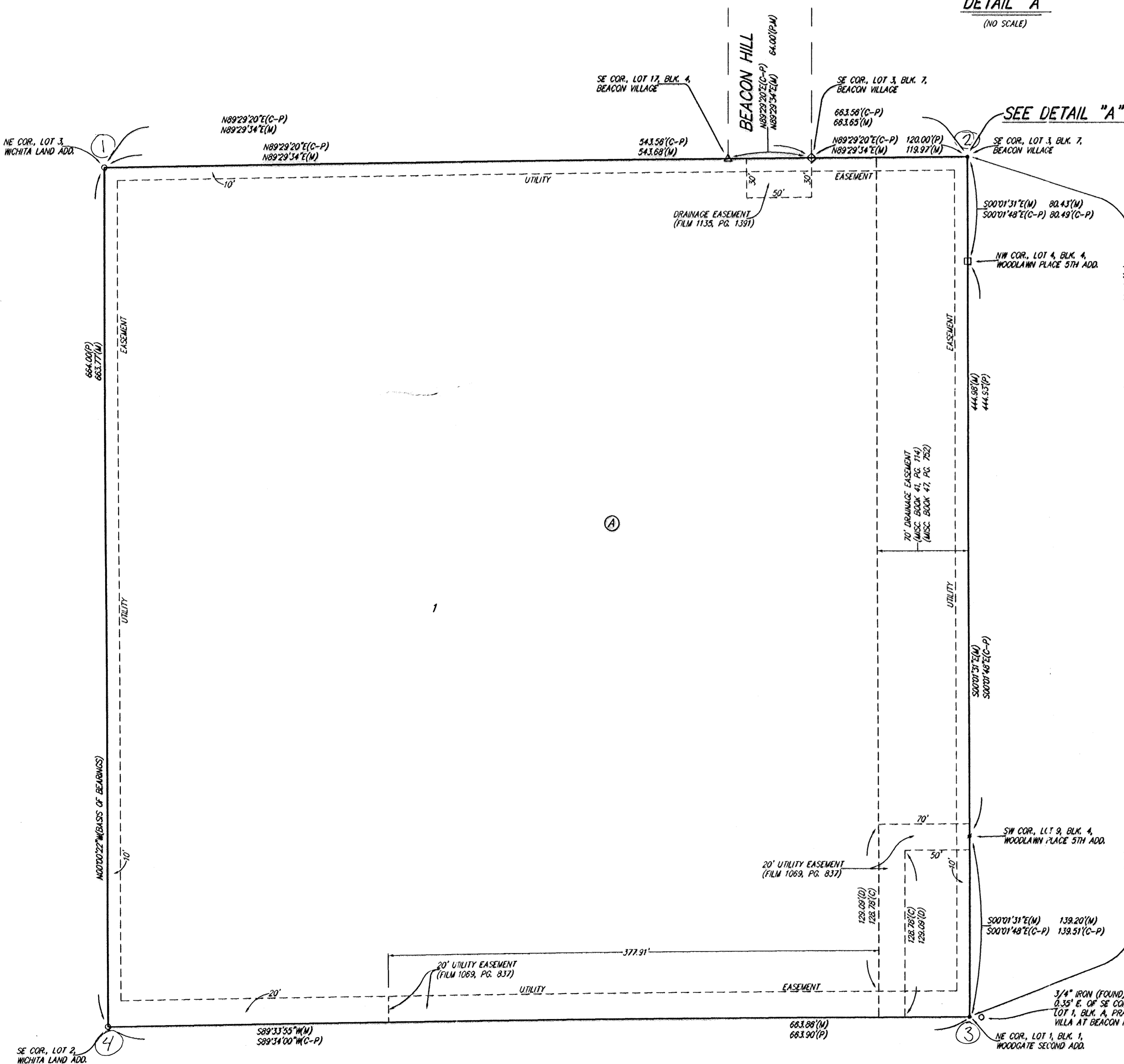
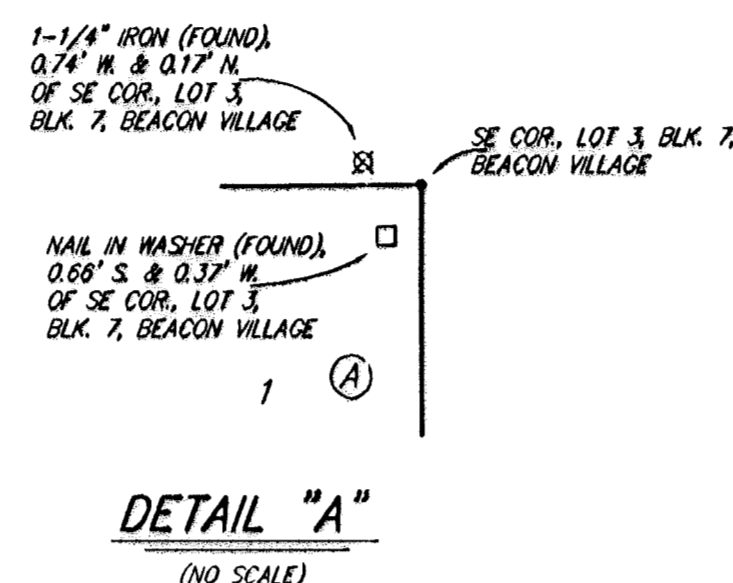
WICHITA, SEDGWICK COUNTY, KANSAS



- = #4 REBAR W/ "BAUGHMAN" CAP (SET)
- ◊ = #5 REBAR W/ "MKEC" CAP (FOUND)
- ◻ = #4 REBAR W/ "BAUGHMAN" CAP (FOUND)
- = 3/4" IRON (FOUND)
- = NAIL IN WASHER (FOUND)
- ⊗ = 1-1/4" IRON (FOUND)
- △ = #5 REBAR W/ "ARMSTRONG" CAP (FOUND)

(M) = MEASURED
(P) = PLATTED
(C-P) = CALCULATED PER PLATTED INFO.

NOTE:
A DRAINAGE PLAN HAS BEEN DEVELOPED FOR THIS SUBDIVISION AND IS ON FILE WITH THE CITY OF WICHITA, KANSAS. DRAINAGE INTENT SHALL REMAIN AS DEPICTED OR AS MODIFIED WITH THE APPROVAL OF THE CITY ENGINEER OF THE CITY OF WICHITA, KANSAS. NO OBSTRUCTIONS WHICH IMPEDE THE FLOW OF THIS DRAINAGE PLAN SHALL BE ALLOWED.



State of Kansas) SS We, Baughman Company, P.A., Surveyors in Sedgwick County and state do hereby certify that we have surveyed and platted "PRAIRIE VILLA AT BEACON HILL", Wichita, Sedgwick County, Kansas and that the accompanying plat is a true and correct exhibit of the property surveyed, described as the N1/2 of the E1/2 of the SE1/4 of the SW1/4 of Sec. 1, Twp. 27-S, R-1-E of the 6th P.M., Sedgwick County, Kansas.

Existing public easements and dedications being vacated by virtue of K.S.A. 12-512(b).
Baughman Company, P.A.

Michael A. Conroy
Michael G. Conroy, Surveyor

This plat of "PRAIRIE VILLA AT BEACON HILL", Wichita, Sedgwick County, Kansas has been submitted to and approved by the Wichita-Sedgwick County Metropolitan Area Planning Commission, Wichita, Kansas.
Dated this _____ day of _____, 2004.
Wichita-Sedgwick County Metropolitan Area Planning Commission

_____, Chair
Ronald L. Marnell

_____, Secretary
John L. Schlegel

This plat approved and all dedications shown hereon accepted by the City Council of the City of Wichita, Kansas, this _____ day of _____, 2004.

_____, Mayor
Carlos Mayans

_____, City Clerk
Karen Sublett

Know all men by these presents that we, the undersigned, have caused the land in the surveyors certificate to be platted into a Lot and a Block, to be known as "PRAIRIE VILLA AT BEACON HILL", Wichita, Sedgwick County, Kansas. The utility easements are hereby granted as indicated for the construction and maintenance of all public utilities.

Prairie Villa at Beacon Hill, L.C.
Al Joseph
Al Joseph, Co-Manager

Reviewed in accordance with K.S.A. 58-2005 on this _____ day of _____, 2004.

Tricia L. Robello, L.S. #1246
Deputy County Surveyor
Sedgwick County, Kansas

Entered on transfer record this _____ day of _____, 2004.

_____, County Clerk
Don Brace

State of Kansas) SS The foregoing instrument acknowledged before me, this _____ day of _____, 2004, by Al Joseph, Co-Manager of Prairie Villa at Beacon Hill, L.C., on behalf of the limited liability company

Elisabeth Hiser
Elisabeth Hiser, Notary Public

My App'l. Exp. May 17, 2007

State of Kansas) SS This is to certify that this plat has been filed for record in the office of the Register of Deeds, this _____ day of _____, 2004 at _____ o'clock _____ M.; and is duly recorded.

_____, Register of Deeds
Bill Meek

_____, Deputy
Linda Kizzire