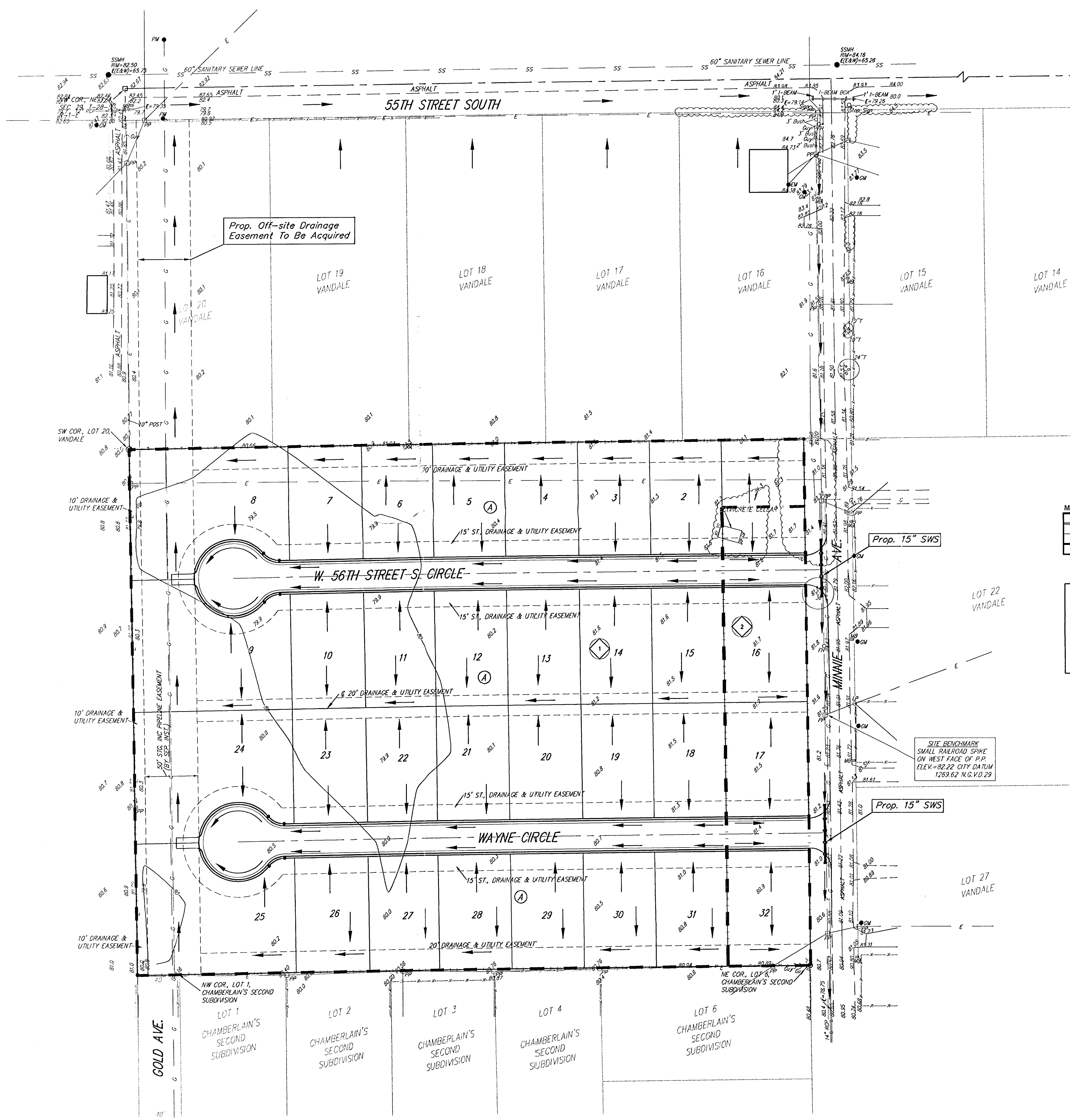
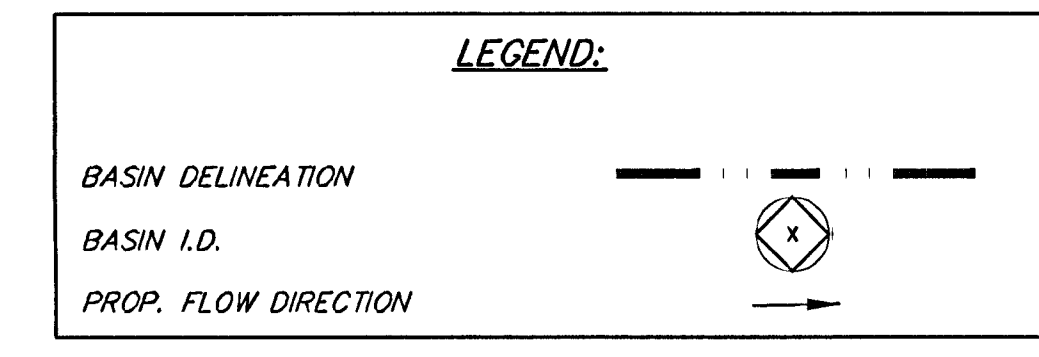


# DRAINAGE CONCEPT MY HOUSE ADDITION WICHITA, SEDGWICK COUNTY, KANSAS



My House Addition -- Rational Method -- Q = CIA -- tc = 15 min.

Basin	Area	C <sub>1</sub>	C <sub>2</sub>	C <sub>3</sub>	C <sub>100</sub>	Q <sub>1</sub> (cfs)	Q <sub>2</sub> (cfs)	Q <sub>100</sub> (cfs)
1	0.78	0.44	0.46	0.81	1.3	1.6	3.5	
2	6.48	0.44	0.46	0.81	10.9	13.8	29.1	
TOTAL	7.26					12.2	15.2	32.6



SITE BENCHMARK  
SMALL RAILROAD SPIKE  
ON WEST FACE OF P.P.  
ELEV. = 82.22 CITY DATUM  
1269.62 N.G.V.D. 29

- 0 50 100
- DATE OF PREPARATION: 29 SEPTEMBER 2003  
DATE OF TOPOGRAPHY: 22 SEPTEMBER 2003  
CONTOUR INTERVAL: 1 FOOT
- EM = Electric Meter
  - FH = Fire Hydrant
  - GM = Gas Meter
  - GA = Guy Anchor
  - LP = Light Pole
  - MB = Mail Box
  - PM = Pipeline Marker
  - PP = Power Pole
  - SSM = Sanitary Sewer Manhole
  - SBC Ped = SBC Pedestal
  - Sign = Sign
- = #4 REBAR W/ "BAUGHMAN" CAP (FOUND)
  - = #4 REBAR W/ "BAUGHMAN" CAP (SET)
  - ⊙ = #4 REBAR (FOUND)
  - ⊗ = 1" IRON PIPE (FOUND)
  - ⊕ = 1/2" PINCHED IRON (FOUND)
  - ⊘ = 3/4" IRON PIPE (FOUND)
  - ⊙ = BOLT (FOUND)
  - ⊗ = RAILROAD SPIKE (FOUND)
  - ⊕ = #4 REBAR (FOUND)

**CONTRACT PURCHASER:**  
Lee Harp  
10300 W. Central  
Wichita, Kansas 67212  
316-461-5657

**LEGAL DESCRIPTION:**  
A replat of all of Lot 21, Vandale, Sedgwick County, Kansas, together with Lot 28 in said Vandale, EXCEPT that part platted as Chamberlain's Second Subdivision in Vandale, Sedgwick County, Kansas.

**BENCHMARK:**  
City of Wichita Benchmark  
NW corner of intersection of 55th St. S. and Broadway.

City Datum = 84.47  
N.G.V.D. 29 = 1271.87

