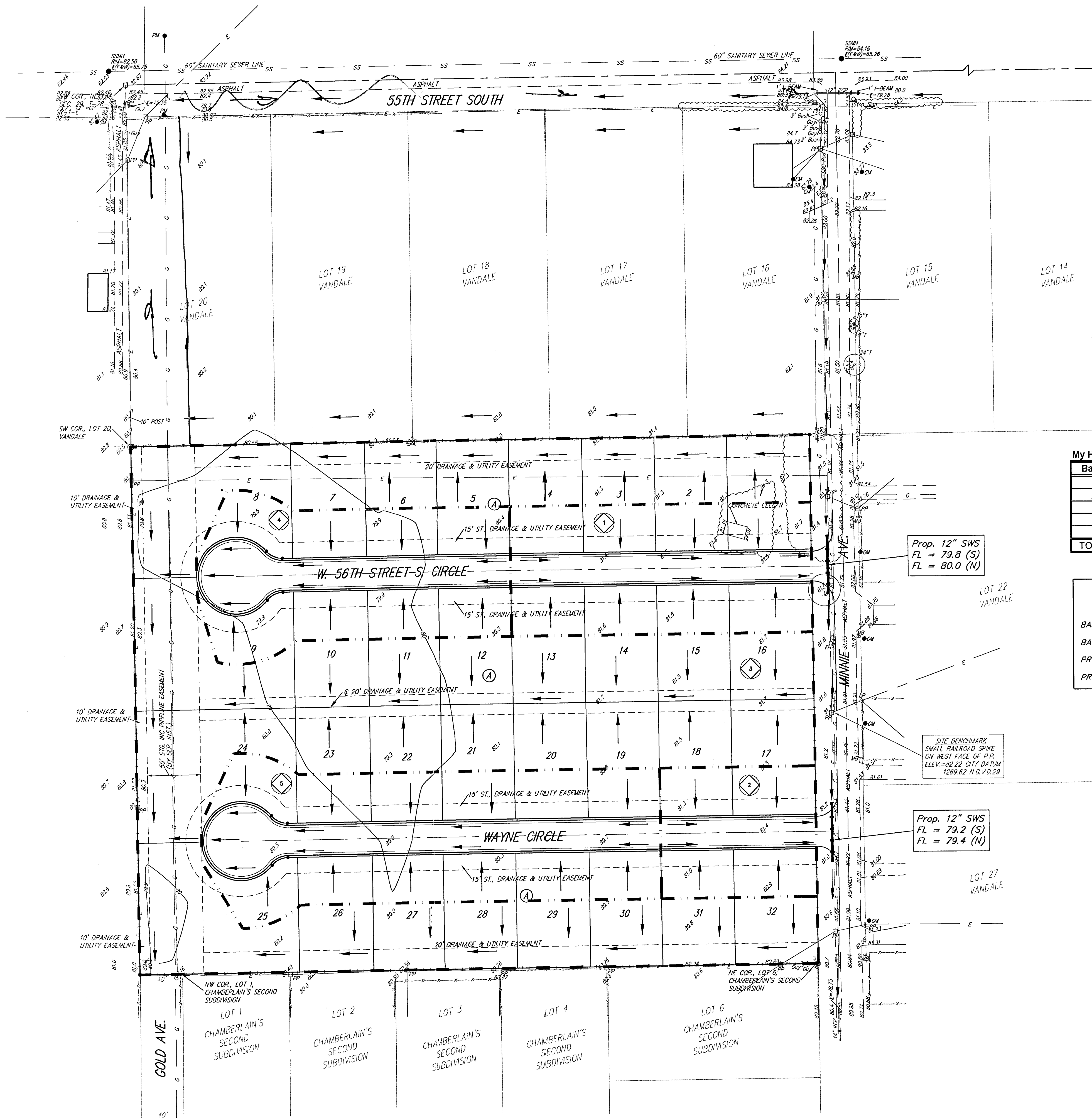
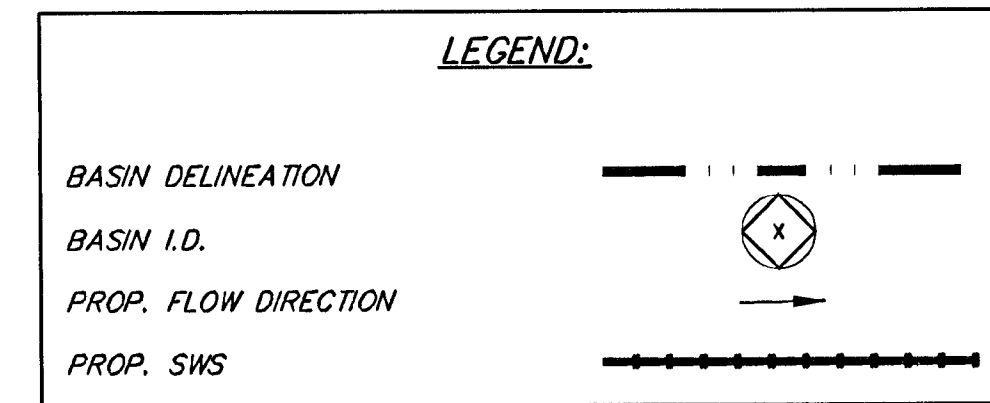


DRAINAGE CONCEPT MY HOUSE ADDITION WICHITA, SEDGWICK COUNTY, KANSAS



My House Addition -- Rational Method -- Q = c i a -- tc = 15 min.

Basin	Area	C ₂	C ₅	C ₁₀₀	Q ₂ (cfs)	Q ₅ (cfs)	Q ₁₀₀ (cfs)
1	0.79	0.44	0.46	0.61	1.3	1.7	3.6
2	0.40	0.44	0.46	0.61	0.7	0.8	1.8
3	4.00	0.44	0.46	0.61	6.7	8.4	18.0
4	0.85	0.44	0.46	0.61	1.4	1.8	3.9
5	1.23	0.44	0.46	0.61	2.1	2.6	5.5
TOTAL	7.28				12.3	15.3	32.7



0 50 100

DATE OF PREPARATION: 29 SEPTEMBER 2003
DATE OF TOPOGRAPHY: 22 SEPTEMBER 2003
CONTOUR INTERVAL: 1 FOOT

- EM = Electric Meter
- FH = Fire Hydrant
- GM = Gas Meter
- GA = Guy Anchor
- LP = Light Pole
- MB = Mail Box
- PM = Pipeline Marker
- PP = Power Pole
- SSM = Sanitary Sewer Manhole
- SSC Ped = SSC Pedestal
- Sign = Sign

- # = #4 REBAR W/ "BAUGHMAN" CAP (FOUND)
- = #4 REBAR W/ "BAUGHMAN" CAP (SET)
- ⊙ = #4 REBAR (FOUND)
- ⊗ = #4 REBAR (FOUND)
- ⊠ = 1" IRON PIPE (FOUND)
- ⊡ = 1/2" PINCHED IRON (FOUND)
- ⊢ = 3/4" IRON PIPE (FOUND)
- ⊣ = BOLT (FOUND)
- ⊤ = RAILROAD SPIKE (FOUND)
- ⊥ = #4 REBAR (FOUND)

CONTRACT PURCHASER:
Lee Harp
10300 W. Central
Wichita, Kansas 67212
316-461-5657

LEGAL DESCRIPTION:
A replat of all of Lot 21, Vandale, Sedgwick County, Kansas, together with Lot 28 in said Vandale, EXCEPT that part platted as Chamberlain's Second Subdivision in Vandale, Sedgwick County, Kansas.

BENCHMARK:
City of Wichita Benchmark.
NW corner of intersection of 55th St. S. and Broadway.

City Datum = 84.47
N.G.V.D.29 = 1271.87

