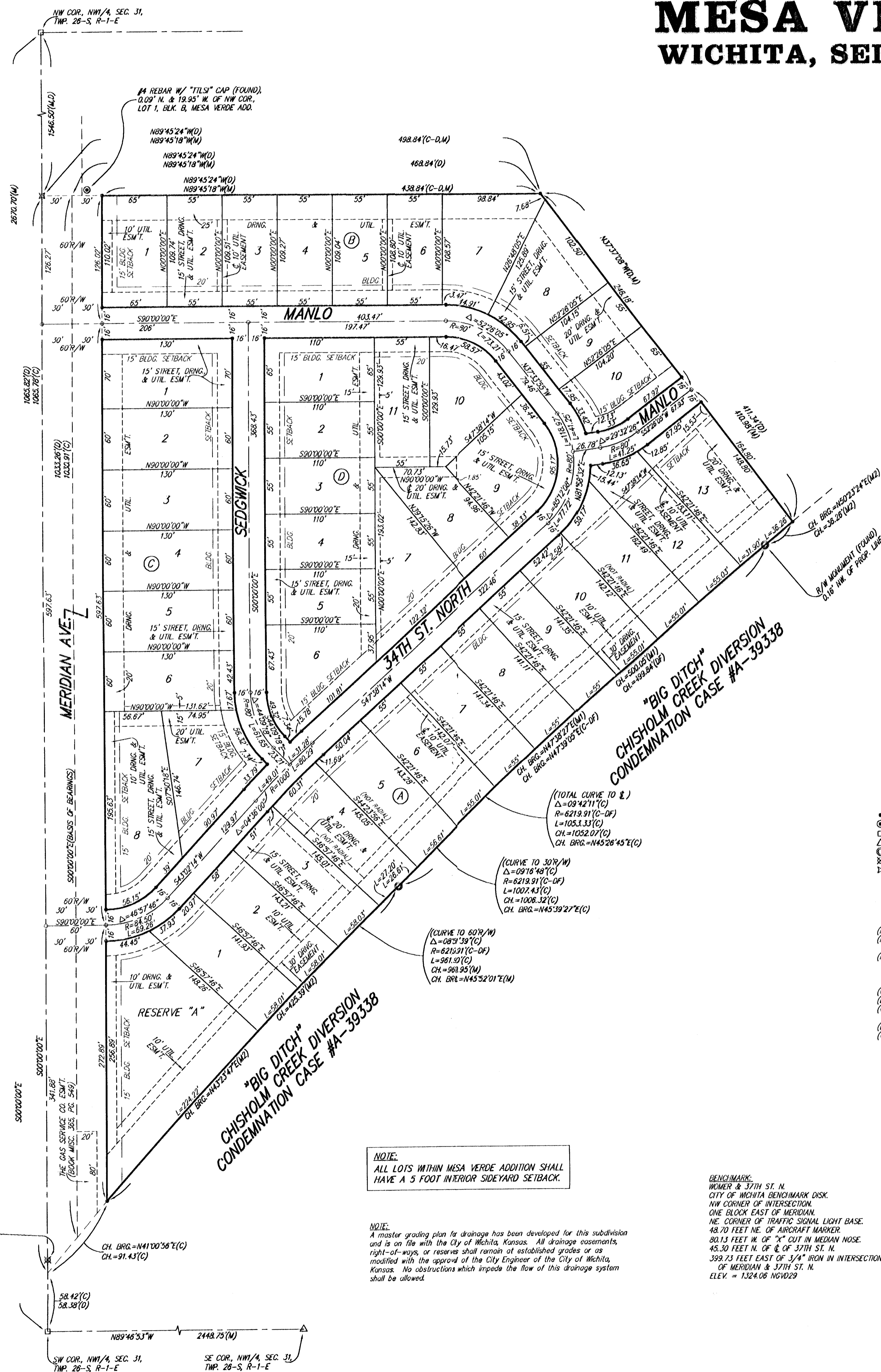


# MESA VERDE ADDITION

## WICHITA, SEDGWICK COUNTY, KANSAS



State of Kansas) SS We, Baughman Company, P.A., Surveyors in Sedgwick County) hereby certify that we have surveyed and platted "MESA VERDE ADDITION", Wichita, Sedgwick County, Kansas and that the accompanying plat is a true and correct exhibit of the property surveyed, described as part of the NW1/4 of Sec. 31, Twp. 26-S, R-1-E of the 6th P.M., Sedgwick County, Kansas, further described as follows: Beginning at a point 1546.50 feet south and 30 feet east of the NW corner of said NW1/4, thence south along the east right-of-way of Meridian Avenue, having an assumed bearing of S00°00'00"E, a distance of 1033.26 feet to a point on the northwesterly right-of-way of the Chisholm Creek Diversion as acquired in Condemnation Case No. A-39338; thence northeasterly along the northwesterly right-of-way of said Chisholm Creek Diversion, being a 00°55'27" curve to the right, having a central angle of 09°16'48" and a radius of 6219.91 feet, an arc distance of 1007.43 feet, (having a long chord distance of 1006.32 feet bearing N45°39'27"E); thence N37°37'08"W, a distance of 411.34 feet; thence N89°45'24"W, a distance of 468.84 feet to the point of beginning.

Existing public easements and dedications being vacated by virtue of K.S.A. 12-512(b).  
Baughman Company, P.A.

Michael A. Conroy, 12-6-2006, Surveyor  
Michael G. Conroy

This plat of "MESA VERDE ADDITION", Wichita, Sedgwick County, Kansas has been submitted to and approved by the Wichita-Sedgwick County Metropolitan Area Planning Commission, Wichita, Kansas.  
Dated this \_\_\_\_\_ day of \_\_\_\_\_, 2006.  
Wichita-Sedgwick County Metropolitan Area Planning Commission

\_\_\_\_\_, Chair  
Ronald L. Marnell  
\_\_\_\_\_, Secretary  
John L. Schlegel

This plat approved and all dedications shown herein accepted by the City Council of the City of Wichita, Kansas, this \_\_\_\_\_ day of \_\_\_\_\_, 2006.

\_\_\_\_\_, Mayor  
Carlos Mayans  
\_\_\_\_\_, City Clerk  
Karen Sublett

Know all men by these presents that we, the undersigned, have caused the land in the surveyors certificate to be platted into Lots, Blocks, Streets, and a Reserve to be known as "MESA VERDE ADDITION", Wichita, Sedgwick County, Kansas. The utility easements are hereby granted as indicated for the construction and maintenance of all public utilities. The drainage and utility easements are hereby granted as indicated for drainage purposes and for the construction and maintenance of all public utilities. The drainage easements are hereby granted as indicated for drainage purposes. The street, drainage, and utility easements are hereby granted as indicated for street purposes, for drainage purposes, and for the construction and maintenance of all public utilities. The streets are hereby dedicated to and for the use of the public. Reserve "A" shall hereby reserved for clubhouse and clubhouse related facilities, recreational areas, open space, landscaping, drainage purposes, and utilities as confined to easements. Reserve "A" shall be owned and maintained by the homeowners association for the addition. The Minimum Building Pad Elevations shall be as indicated on the face of the plat.

Community Economic Resource Corporation, a Kansas Non-Profit corporation

Richard E. Lopez, Chief Executive Officer

Reviewed in accordance with K.S.A. 58-2005 on this \_\_\_\_\_ day of \_\_\_\_\_, 2006.

Tricia L. Robello, L.S. #1216  
Deputy County Surveyor  
Sedgwick County, Kansas

Entered on transfer record this \_\_\_\_\_ day of \_\_\_\_\_, 2006.

Don Brace, County Clerk

State of Kansas) SS This is to certify that this plat has been filed for record in the office of the Register of Deeds, this \_\_\_\_\_ day of \_\_\_\_\_, 2006 at \_\_\_\_\_ o'clock \_\_\_\_\_ M; and is duly recorded.

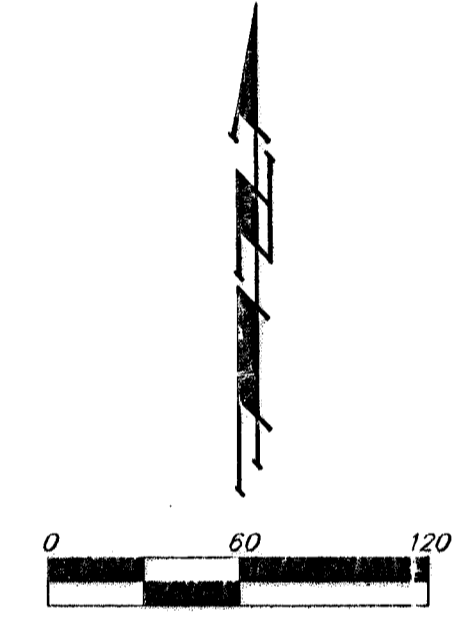
State of Kansas) SS The foregoing instrument acknowledged before me, this \_\_\_\_\_ day of \_\_\_\_\_, 2006, by Richard E. Lopez, Chief Executive Officer of Community Economic Resource Corporation, a Kansas Non-Profit corporation, on behalf of the corporation.

JUDITH M. TERHUNE  
Notary Public, State of Kansas  
My App. Expires 11-7-09

Judith M. Terhune, Notary Public

Bill Meek, Register of Deeds

Linda Kizzire, Deputy



- = #4 REBAR W/ "BAUGHMAN" CAP (SET)
- ⊙ = #4 REBAR W/ "TILTS" CAP (FOUND)
- = 3/4" STEEL PIN (FOUND)
- △ = 1/2" IRON IN THUMB (FOUND)
- ⊕ = CONC. FLOODWAY MONUMENT (FOUND)
- ⊗ = #3 REBAR (FOUND)
- ⊠ = 1 1/2" IRON PIPE (FOUND)

LOT	BLOCK	ELEVATION
1-13	A	1322.0
1-10	B	1322.0
1-8	C	1322.0
1-11	D	1322.0
RESERVE "A"		1322.0

NOTE: ALL LOTS WITHIN MESA VERDE ADDITION SHALL HAVE A 5 FOOT INTERIOR SIDEYARD SETBACK.

NOTE: A master grading plan for drainage has been developed for this subdivision and is on file with the City of Wichita, Kansas. All drainage easements, right-of-ways, or reserves shall remain at established grades or as modified with the approval of the City Engineer of the City of Wichita, Kansas. No obstructions which impede the flow of this drainage system shall be allowed.

BENCHMARK:  
WISNER & 37TH ST. N.  
CITY OF WICHITA BENCHMARK DISK  
NW CORNER OF INTERSECTION  
ONE BLOCK EAST OF MERIDIAN  
NE CORNER OF TRAFFIC SIGNAL LIGHT BASE  
48.70 FEET NE. OF AIRCRAFT MARKER  
80.13 FEET W. OF "X" CUT IN MEDIAN NOSE  
45.30 FEET N. OF "E" OF 37TH ST. N.  
392.73 FEET EAST OF 3/4" IRON IN INTERSECTION  
OF MERIDIAN & 37TH ST. N.  
ELEV. = 1324.08 NGVD29