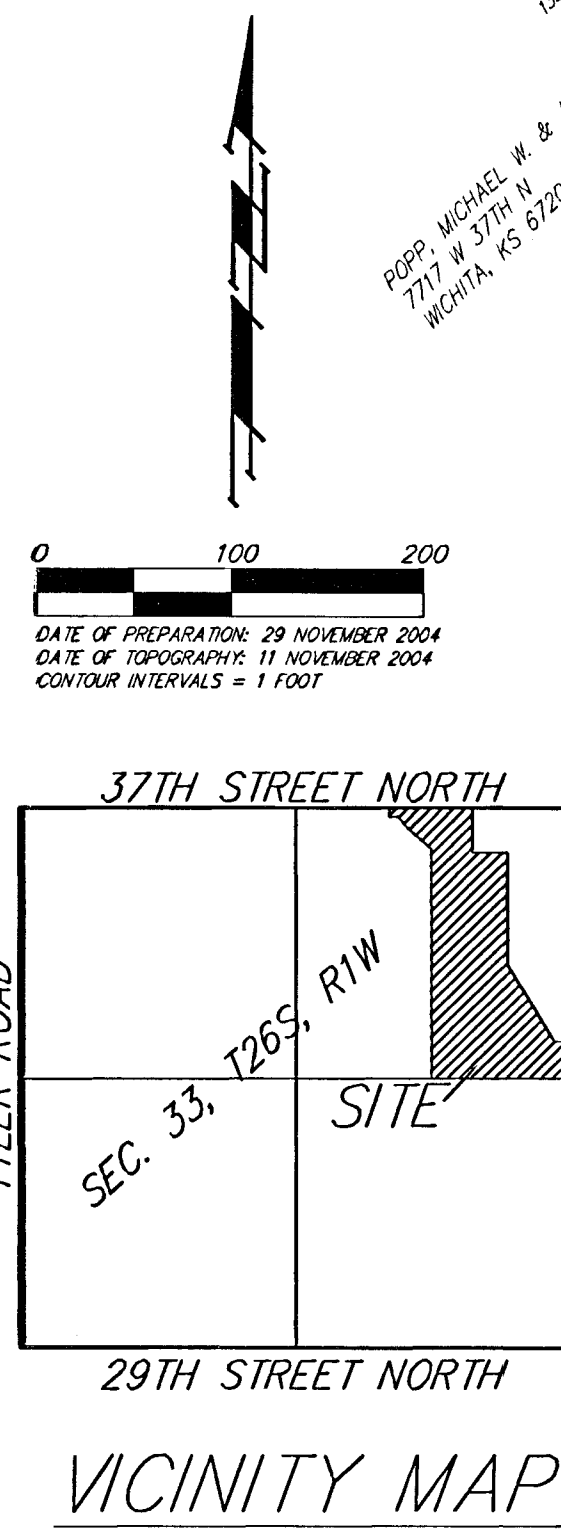
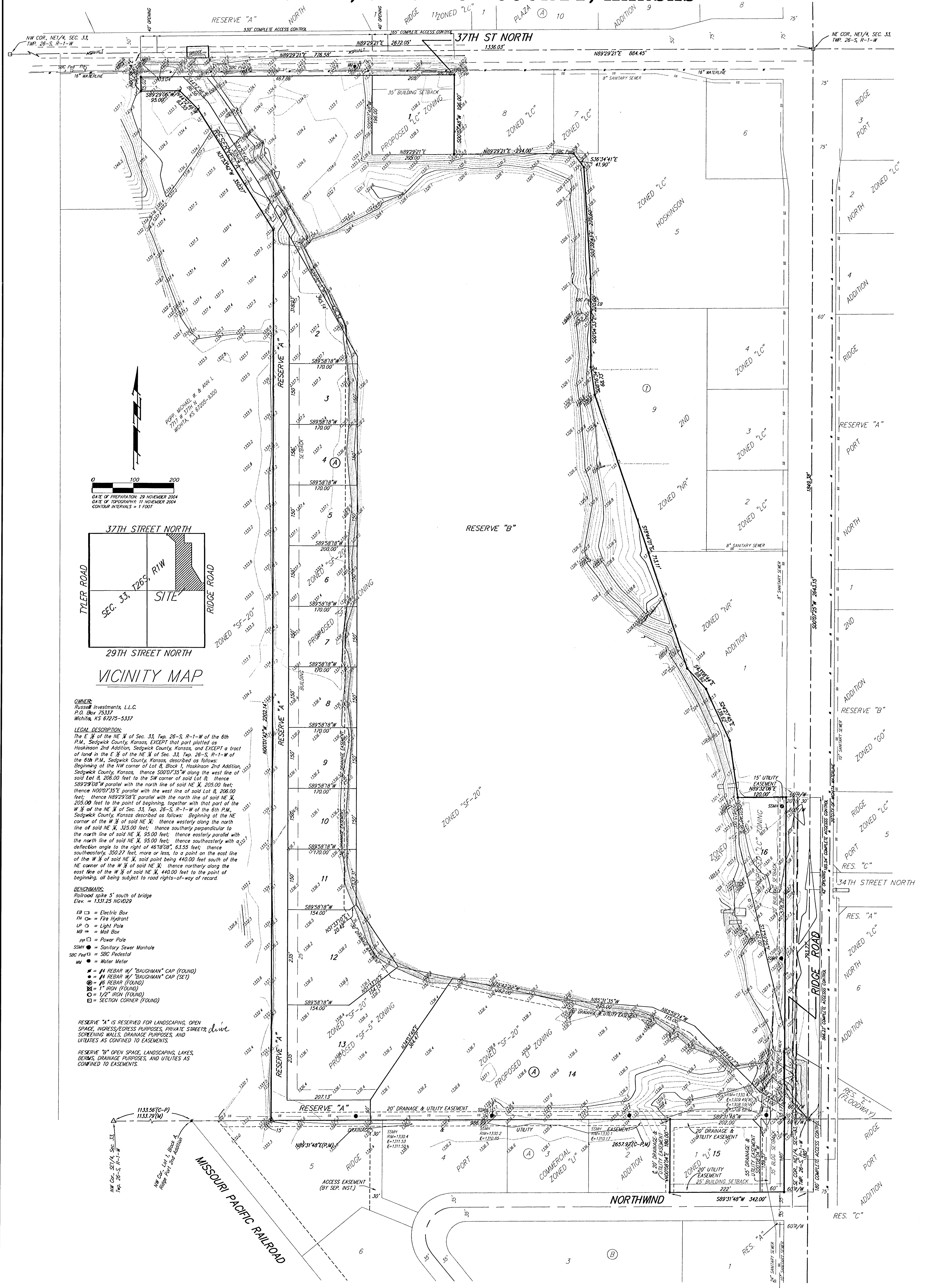


PRELIMINARY PLAT
PIER 37 ADDITION
WICHITA, SEDGWICK COUNTY, KANSAS



OWNER:
 Russel Investments, L.L.C.
 P.O. Box 23317
 Wichita, KS 67275-5317

LEGAL DESCRIPTION:
 The E 1/2 of the NE 1/4 of Sec. 33, Twp. 26-S, R-1-W of the 6th P.M., Sedgwick County, Kansas, EXCEPT that part platted as Hoskinson 2nd Addition, Sedgwick County, Kansas, and EXCEPT a tract of land in the E 1/2 of the NE 1/4 of Sec. 33, Twp. 26-S, R-1-W of the 6th P.M., Sedgwick County, Kansas, described as follows: Beginning at the NW corner of Lot 8, Block 1, Hoskinson 2nd Addition, Sedgwick County, Kansas, thence S00D°35'30"W along the west line of said Lot 8, 258.00 feet to the SW corner of said Lot 8, thence S89°29'08"W parallel with the north line of said NE 1/4, 203.00 feet; thence N00D°25'25"E parallel with the west line of said NE 1/4, 206.00 feet; thence N89°29'08"E parallel with the north line of said NE 1/4, 205.00 feet to the point of beginning, together with that part of the W 1/2 of the NE 1/4 of said Sec. 33, Twp. 26-S, R-1-W of the 6th P.M., Sedgwick County, Kansas described as follows: Beginning at the NE corner of the W 1/2 of said NE 1/4, thence westerly along the north line of said NE 1/4, 325.00 feet; thence southerly perpendicular to the north line of said NE 1/4, 55.00 feet; thence easterly parallel with the north line of said NE 1/4, 35.00 feet; thence southerly with a deflection angle to the right of 46°18'00", 63.55 feet; thence southeasterly, 350.27 feet, more or less, to a point on the east line of the W 1/2 of said NE 1/4, said point being 440.00 feet south of the NE corner of the W 1/2 of said NE 1/4; thence northerly along the east line of the W 1/2 of said NE 1/4, 440.00 feet to the point of beginning, all being subject to road rights-of-way of record.

BENCHMARK:
 Railroad spike 5' south of bridge
 Elevation = 1131.25 (NOV09)

EQ □ = Electric Box
 FH ○ = Fire Hydrant
 LP ○ = Light Pole
 MB ○ = Mail Box
 PP □ = Power Pole
 SSM ○ = Sanitary Sewer Manhole
 SBC Ped 11 = SBC Pedestal
 MW ● = Water Meter
 # = #1 REBAR W/ "BALDWIN" CAP (FOUND)
 # = #4 REBAR W/ "BALDWIN" CAP (FOUND)
 # = #6 REBAR (FOUND)
 # = #8 REBAR (FOUND)
 # = #10 REBAR (FOUND)
 # = #12 REBAR (FOUND)
 # = SECTION CORNER (FOUND)

RESERVE "A" IS RESERVED FOR LANDSCAPING, OPEN SPACE, INGRESS/EGRESS PURPOSES, PRIVATE STREETS, DRIVE SCREENING WALLS, DRAINAGE PURPOSES, AND UTILITIES AS CONTAINED TO EASEMENTS.

RESERVE "B" IS OPEN SPACE, LANDSCAPING, LAKES, BERMS, DRAINAGE PURPOSES, AND UTILITIES AS CONTAINED TO EASEMENTS.