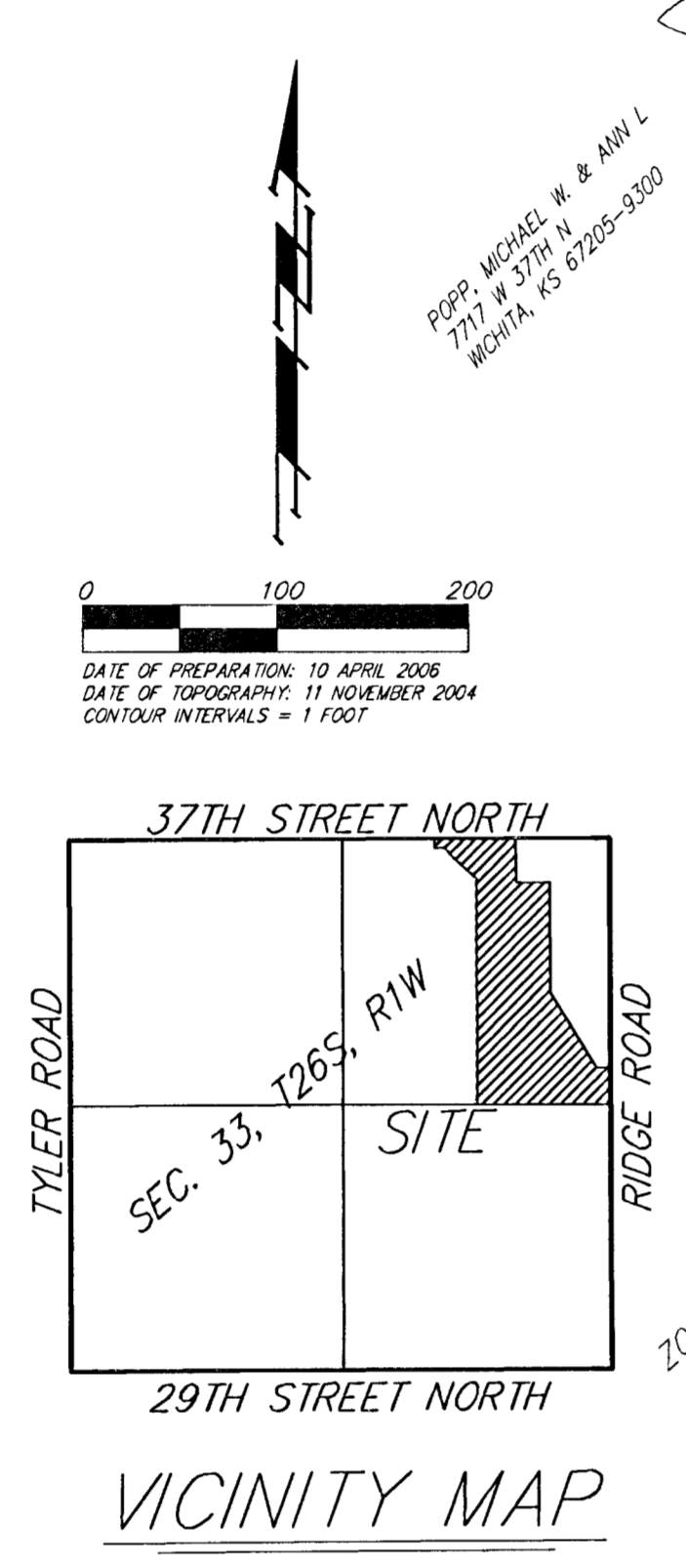
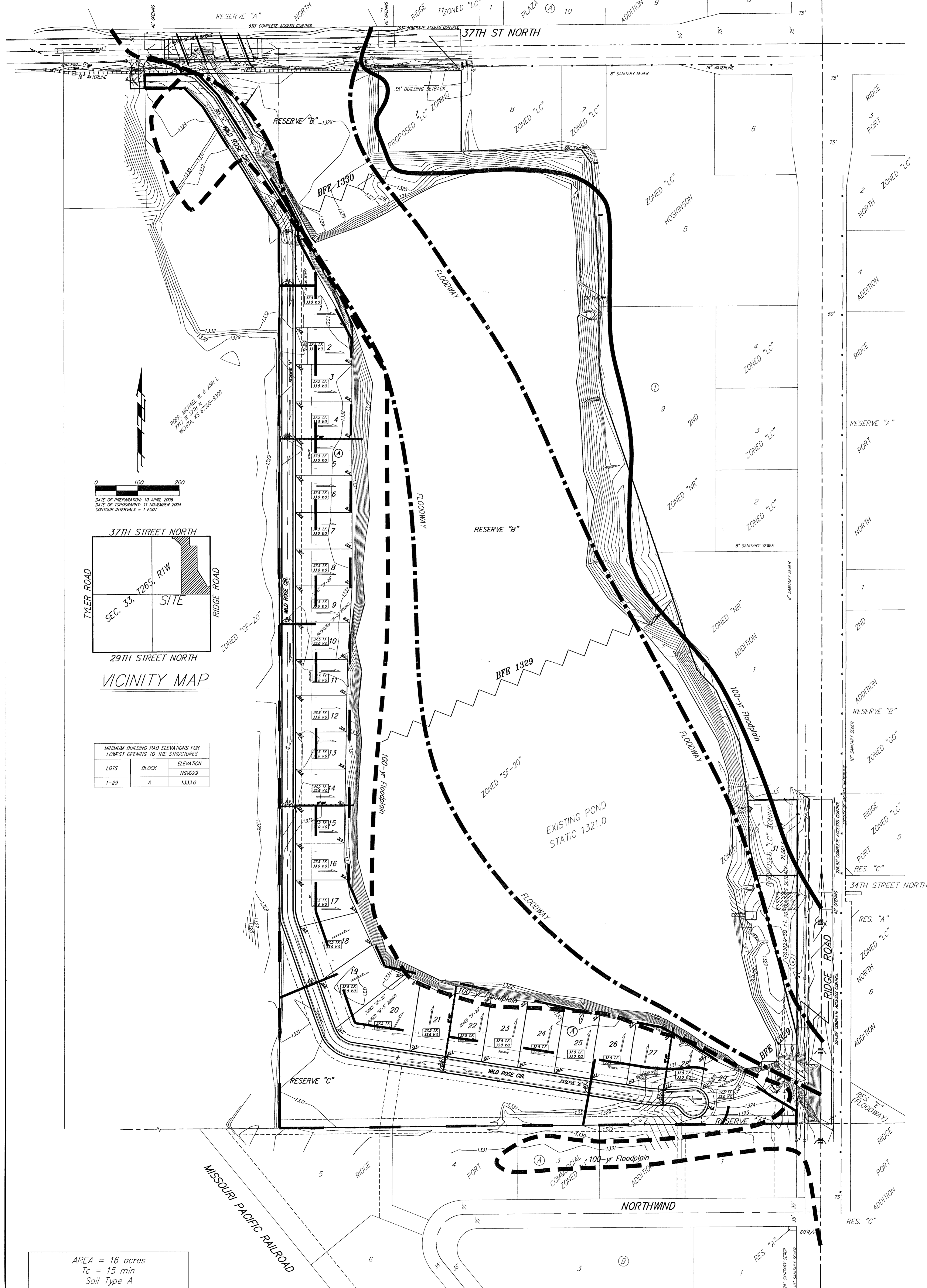


DRAINAGE & GRADING PLAN
PIER 37 ADDITION
 WICHITA, SEDGWICK COUNTY, KANSAS



MINIMUM BUILDING PAD ELEVATIONS FOR LOWEST OPENING TO THE STRUCTURES

| LOTS | BLOCK | ELEVATION |
|------|-------|-----------|
| 1-29 | A | 1333.0 |

| | |
|-----------------|---------------|
| AREA = 16 acres | |
| Tc = 15 min | |
| Soil Type A | |
| EXISTING | DEVELOPED |
| C' = 0.50 | C' = 0.70 |
| Q2 = 31 cfs | Q2 = 4.3 cfs |
| Q5 = 37 cfs | Q5 = 51 cfs |
| Q100 = 59 cfs | Q100 = 83 cfs |

NOTE: FEMA Floodplain and Floodway Boundaries scaled per location per FEMA FIRM Panel 125 of 300. Revised to reflect LOMR Case #06-07-B015P, May 16, 2006.