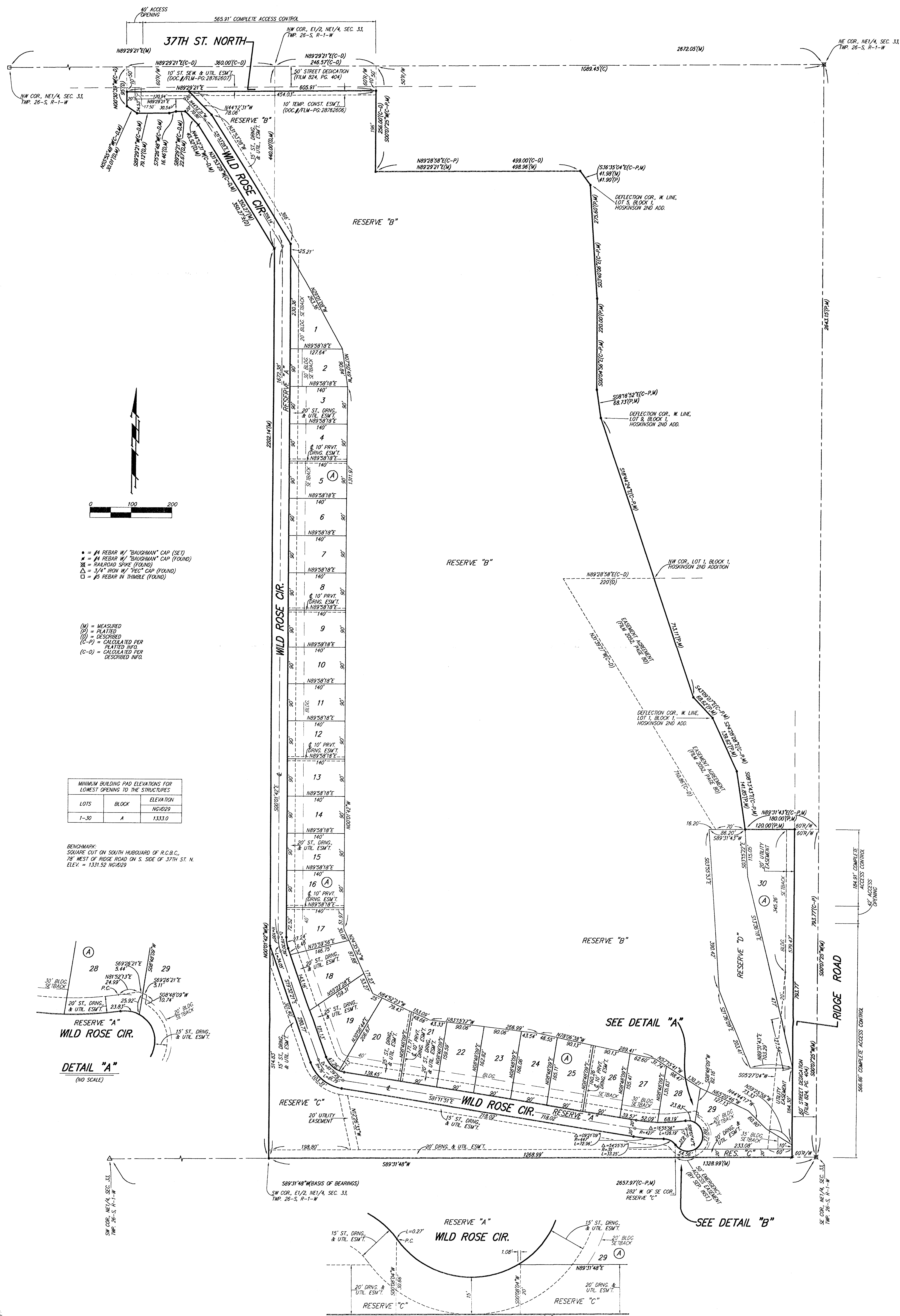


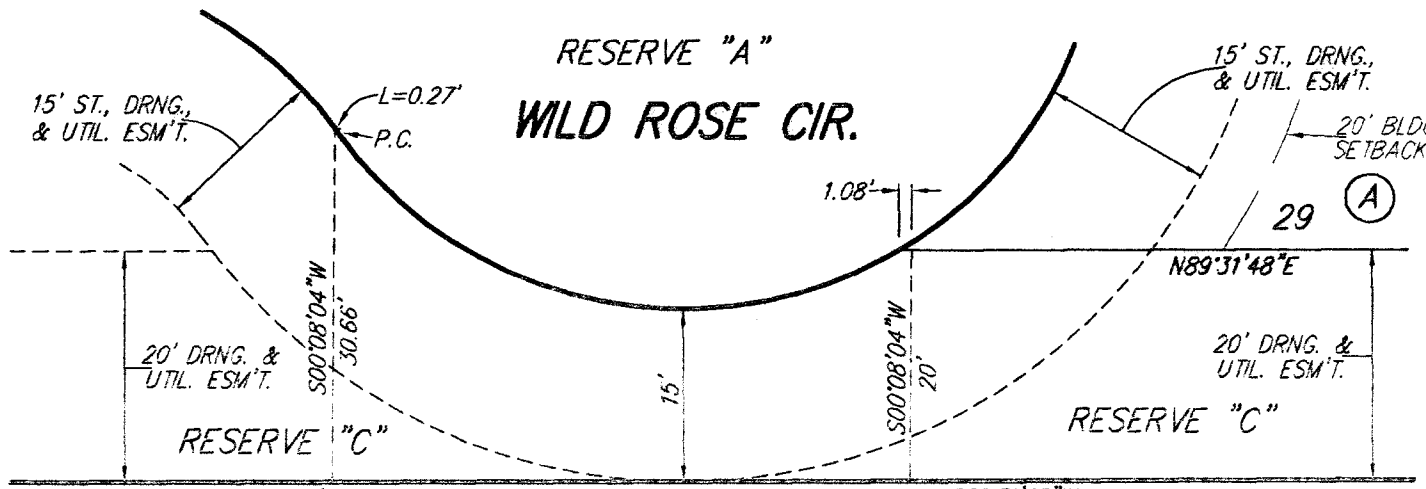
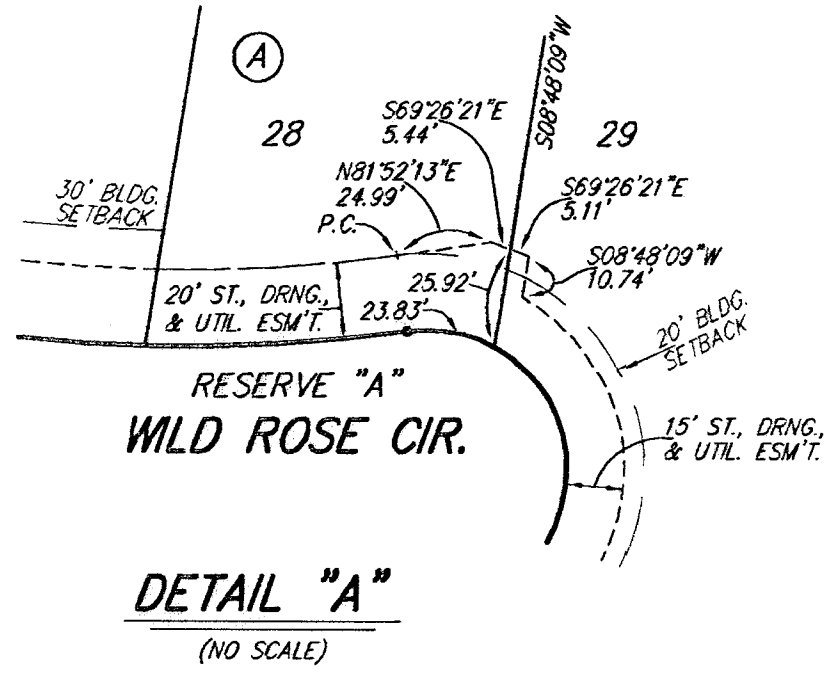
PIER 37 ADDITION WICHITA, SEDGWICK COUNTY, KANSAS



- = #1 REBAR W/ "BAUGHMAN" CAP (SET)
 - = #1 REBAR W/ "BAUGHMAN" CAP (FOUND)
 - ⊗ = RAILROAD SPIKE (FOUND)
 - Δ = 3/4" IRON W/ "PAC" CAP (FOUND)
 - = #5 REBAR IN TIMBER (FOUND)
- (M) = MEASURED
 - (P) = PLATTED
 - (D) = DESCRIBED
 - (C-P) = CALCULATED PER PLATTED INFO
 - (C-D) = CALCULATED PER DESCRIBED INFO

MINIMUM BUILDING PAD ELEVATIONS FOR LOWEST OPENING TO THE STRUCTURES		
LOTS	BLOCK	ELEVATION
1-30	A	1333.0

BENCHMARK:
SQUARE CUT ON SOUTH HUBBARD OF R.C.B.C.,
78' WEST OF RIDGE ROAD ON S. SIDE OF 37TH ST. N.
ELEV. = 1331.52 NOV1929



NOTE:
A MASTER GRADING PLAN FOR DRAINAGE HAS BEEN DEVELOPED FOR THIS SUBDIVISION AND IS ON FILE WITH THE CITY OF WICHITA, KANSAS.
ALL DRAINAGE EASEMENTS, POINTS-OF-VIEW, OR RESERVES SHALL REMAIN AT ESTABLISHED GRADES OR AS MODIFIED WITH THE APPROVAL OF THE CITY ENGINEER OF THE CITY OF WICHITA, KANSAS. NO OBSTRUCTIONS WHICH WOULD INTERFERE WITH THE FLOW OF THIS DRAINAGE SYSTEM SHALL BE ALLOWED.