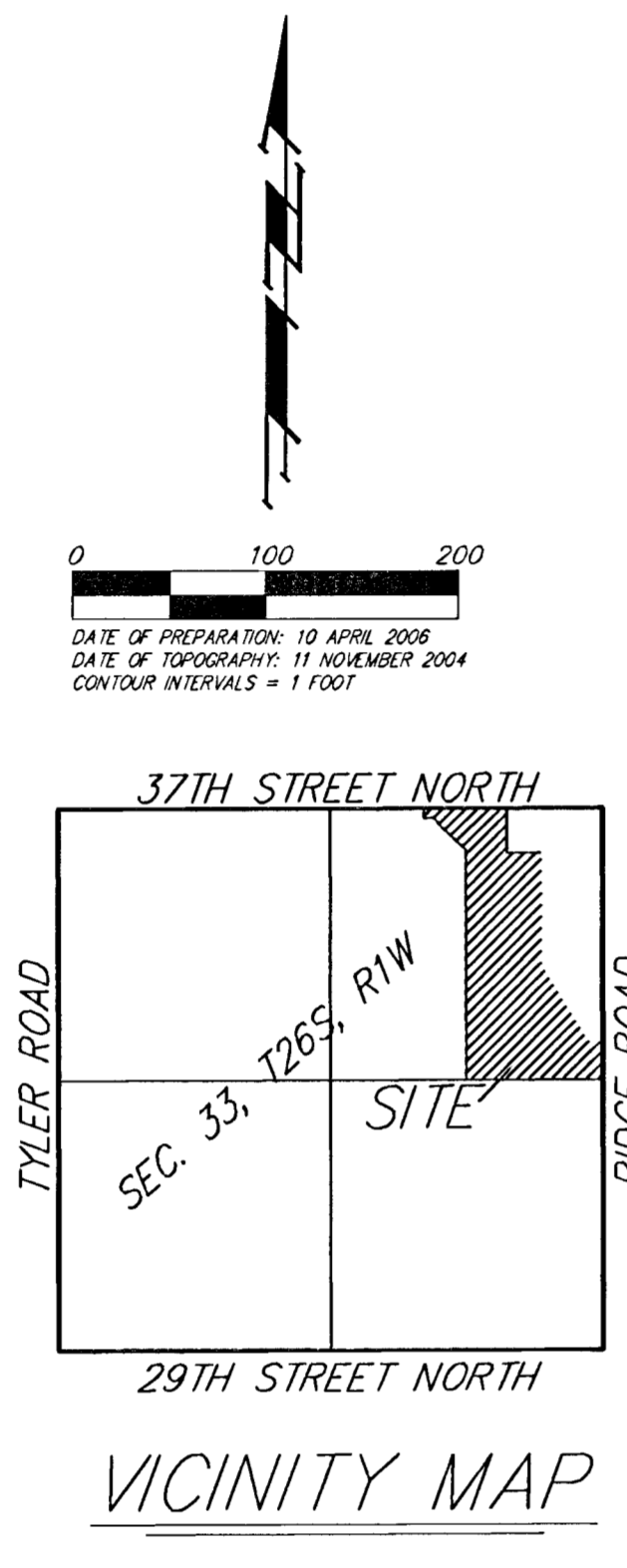
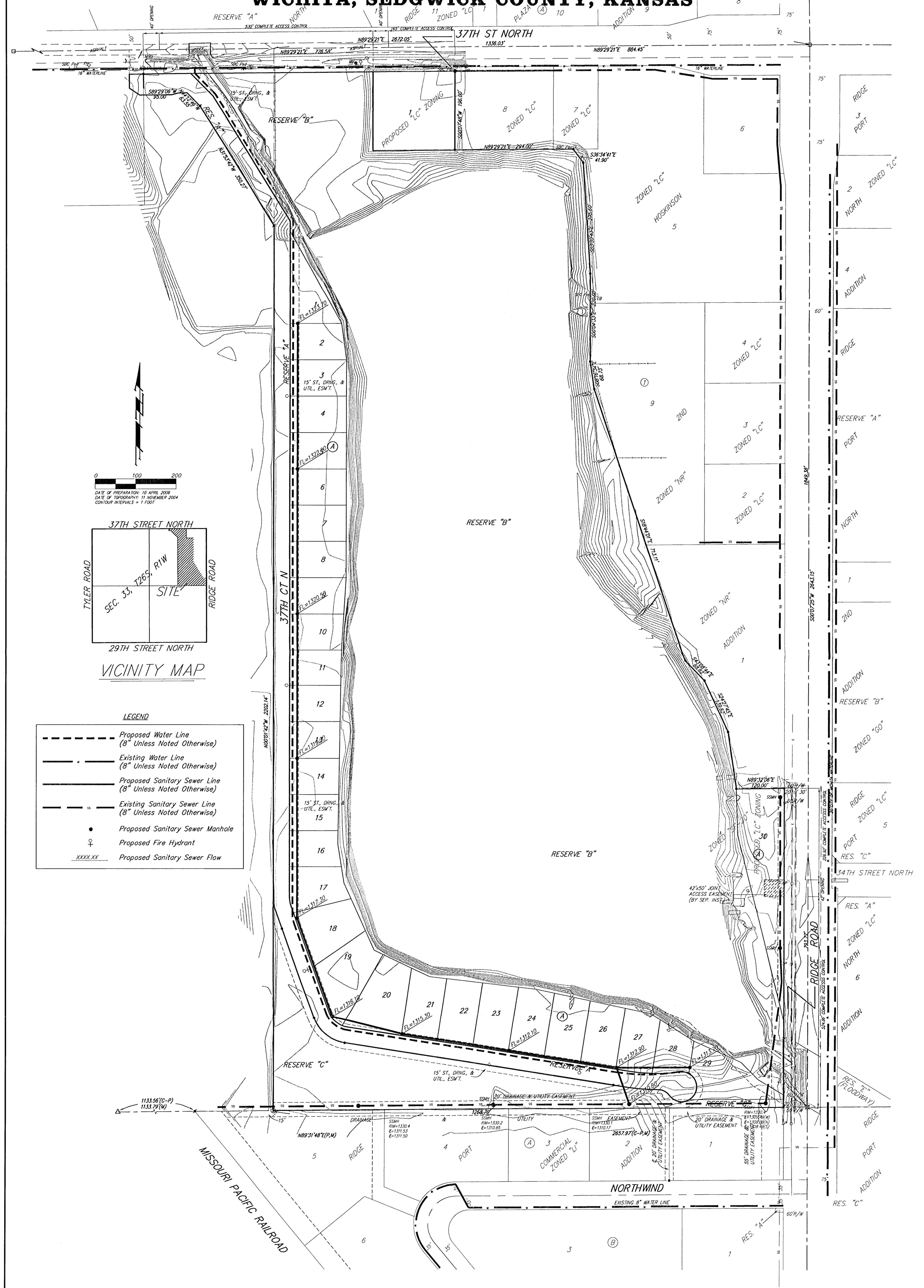


# UTILITY PLAN PIER 37 ADDITION WICHITA, SEDGWICK COUNTY, KANSAS



**LEGEND**

	Proposed Water Line (8" Unless Noted Otherwise)
	Existing Water Line (8" Unless Noted Otherwise)
	Proposed Sanitary Sewer Line (8" Unless Noted Otherwise)
	Existing Sanitary Sewer Line (8" Unless Noted Otherwise)
	Proposed Sanitary Sewer Manhole
	Proposed Fire Hydrant
	Proposed Sanitary Sewer Flow