

CLOSURE

CLOSURE - TURKEY CREEK 2ND ADDITION

PT 01	North: 34191.2447	East : 34542.9988
Line	Course: S 01-24-26 W	Length: 1978.9200
PT 02	North: 32212.9215	East : 34494.4001
Line	Course: S 89-41-14 W	Length: 660.3000
PT 03	North: 32209.3169	East : 33834.1099
Line	Course: S 01-24-26 W	Length: 660.3000
PT 04	North: 31549.2161	East : 33817.8941
Line	Course: S 89-41-14 W	Length: 944.8800
PT 05	North: 31544.0580	East : 32873.0282
Line	Course: N 12-55-36 W	Length: 621.5900
PT 06	North: 32149.8952	East : 32733.9762
Line	Course: N 03-28-13 W	Length: 116.9600
PT 07	North: 32266.6407	East : 32726.8965
Line	Course: N 16-38-01 W	Length: 108.0600
PT 08	North: 32370.1789	East : 32695.9643
Line	Course: N 06-57-07 E	Length: 102.7400
PT 09	North: 32472.1636	East : 32708.3996
Line	Course: N 18-34-36 E	Length: 291.5100
PT 10	North: 32748.4854	East : 32801.2669
Line	Course: N 01-44-45 W	Length: 101.9400
PT 11	North: 32850.3781	East : 32798.1612
Line	Course: N 04-57-52 E	Length: 137.0200
PT 12	North: 32986.8840	East : 32810.0186
Line	Course: N 25-48-53 E	Length: 214.6100
PT 13	North: 33180.0775	East : 32903.4732
Line	Course: N 16-48-41 E	Length: 57.0400
PT 14	North: 33234.6797	East : 32919.9704
Line	Course: N 25-37-44 E	Length: 169.4200
PT 15	North: 33387.4312	East : 32993.2514
Line	Course: N 35-20-37 E	Length: 254.2300
PT 16	North: 33594.8060	East : 33140.3180
Line	Course: N 21-16-07 E	Length: 263.0600
PT 17	North: 33839.9490	East : 33235.7406
Line	Course: N 10-01-32 E	Length: 263.1200
PT 18	North: 34099.0512	East : 33281.5465
Line	Course: N 07-49-18 W	Length: 92.3900
PT 19	North: 34190.5817	East : 33268.9731
Line	Course: N 89-58-11 E	Length: 1274.0200
PT 01	North: 34191.2549	East : 34542.9929

ONE-STEP FINAL PLAT
TURKEY CREEK 2ND ADDITION
WICHITA, SEDGWICK COUNTY, KANSAS

State of Kansas) SS
 Sedgwick County) We, Baughman Company, P.A., Surveyors in aforesaid county and state do hereby certify that we have surveyed and platted "TURKEY CREEK 2ND ADDITION", Wichita, Sedgwick County, Kansas and that the accompanying plat is a true and correct exhibit of the property surveyed, described as and being a replat of all of Lots 1, 2, 3, 4, 5, 6, 7, 8, 9, 10, 11, 12, 13, 14, 15, 16, 17, 18, 19, 20, 21, 22, 23, 24, 25, 26, 27, and 28, Block A, Turkey Creek Addition, Wichita, Sedgwick County, Kansas, together with all of Lots 1, 2, 3, 4, 5, 6, 7, 8, 9, 10, 11, 12, 13, 14, 15, 16, 17, 18, 19, 20, 21, 22, 23, 24, 25, 26, 27, 28, 29, 30, 31, 32, 33, 34, 35, 36, 37, 38, 39, 40, 41, 42, 43, 44, 45, 46, 47, 48, 49, 50, 51, 52, 53, 54, 55, 56, and 57, Block B, in said Turkey Creek Addition, together with all of Lots 1, 2, 3, 4, 5, 6, 7, 8, 9, 10, 11, 12, 13, 14, 15, 16, 17, 18, 19, 20, 21, 22, 23, 24, 25, and 26, Block C, in said Turkey Creek Addition, together with all of Lots 1, 2, 3, 4, 5, 6, 7, 8, 9, 10, 11, 12, 13, 14, 15, 16, 17, 18, 19, 20, 21, and 22, Block D, in said Turkey Creek Addition, together with all of Lots 1, 2, 3, 4, 5, 6, 7, 8, 9, 10, 11, 12, 13, 14, 15, 16, 17, 18, 19, 20, 21, 22, 23, 24, 25, 26, 27, 28, 29, 30, 31, 32, 33, 34, 35, 36, 37, 38, 39, 40, 41, 42, 43, 44, 45, 46, 47, 48, 49, 50, 51, 52, 53, 54, 55, 56, 57, 58, 59, and 60, Block E, in said Turkey Creek Addition, together with all of Reserve "A" as platted in said Turkey Creek Addition, together with all of Upland Hills, both Upland Hills Cts., Grant, both Grant Cts., Rogers Ln., Rogers Cir., Haskell, Jewell, and both Jewell Cts., all as platted as dedicated in said Turkey Creek Addition.

Existing public easements and dedications being vacated by virtue of K.S.A. 12-512(b).

Baughman Company, P.A.

_____, Surveyor
 Michael G. Conroy

Know all men by these presents that we, the undersigned, have caused the land in the surveyors certificate to be platted into Lots, Blocks, Streets, and a Reserve, to be known as "TURKEY CREEK 2ND ADDITION", Wichita, Sedgwick County, Kansas. The utility easements are hereby granted as indicated for the construction and maintenance of all public utilities. The drainage and utility easements are hereby granted as indicated for drainage purposes and for the construction and maintenance of all public utilities. The drainage easements are hereby granted as indicated for drainage purposes. The streets are hereby dedicated to and for the use of the public. Reserve "A" is hereby reserved for lakes, landscaping, open space, berms, drainage purposes, and utilities as confined to easements. Reserve "A" shall be owned and maintained by the homeowners association for the addition. Access controls shall be as depicted on the face of the plat and are hereby granted to the City of Wichita, Kansas. The Minimum Building Pad Elevations for the lowest opening to the structures shall be as indicated on the face of the plat.

Kick'N Development Corporation

_____, President
 Paul E. Kelsey

State of Kansas) SS
 Sedgwick County) The foregoing instrument acknowledged before me, this _____ day of _____, 2004, by Paul E. Kelsey, President of Kick'N Development Corporation, on behalf of the corporation.

_____, Notary Public
 My App't. Exp. _____

This plat of "TURKEY CREEK 2ND ADDITION", Wichita, Sedgwick County, Kansas has been submitted to and approved by the Wichita-Sedgwick County Metropolitan Area Planning Commission, Wichita, Kansas.

Dated this _____ day of _____, 2004.
 Wichita-Sedgwick County Metropolitan Area Planning Commission

_____, Chair
 Morris K. Dunlap

_____, Secretary
 John L. Schlegel

This plat approved and all dedications shown hereon accepted by the City Council of the City of Wichita, Kansas, this _____ day of _____, 2004.

_____, Mayor
 Carlos Mayans

_____, City Clerk
 Karen Sublett

Reviewed in accordance with K.S.A. 58-2005 on this _____ day of _____, 2004.

 Tricia L. Robello, L.S. #1246
 Deputy County Surveyor
 Sedgwick County, Kansas

Entered on transfer record this _____ day of _____, 2004.

_____, County Clerk
 Don Brace

We the undersigned holders of a mortgage on the above described property, do hereby consent to this plat of "TURKEY CREEK 2ND ADDITION", Wichita, Sedgwick County, Kansas.

Legacy Bank

_____, (Title)

State of Kansas) SS
 Sedgwick County) The foregoing instrument acknowledged before me, this _____ day of _____, 2004, by _____ of Legacy Bank, on behalf of the bank.
 (Title)

_____, Notary Public
 My App't. Exp. _____

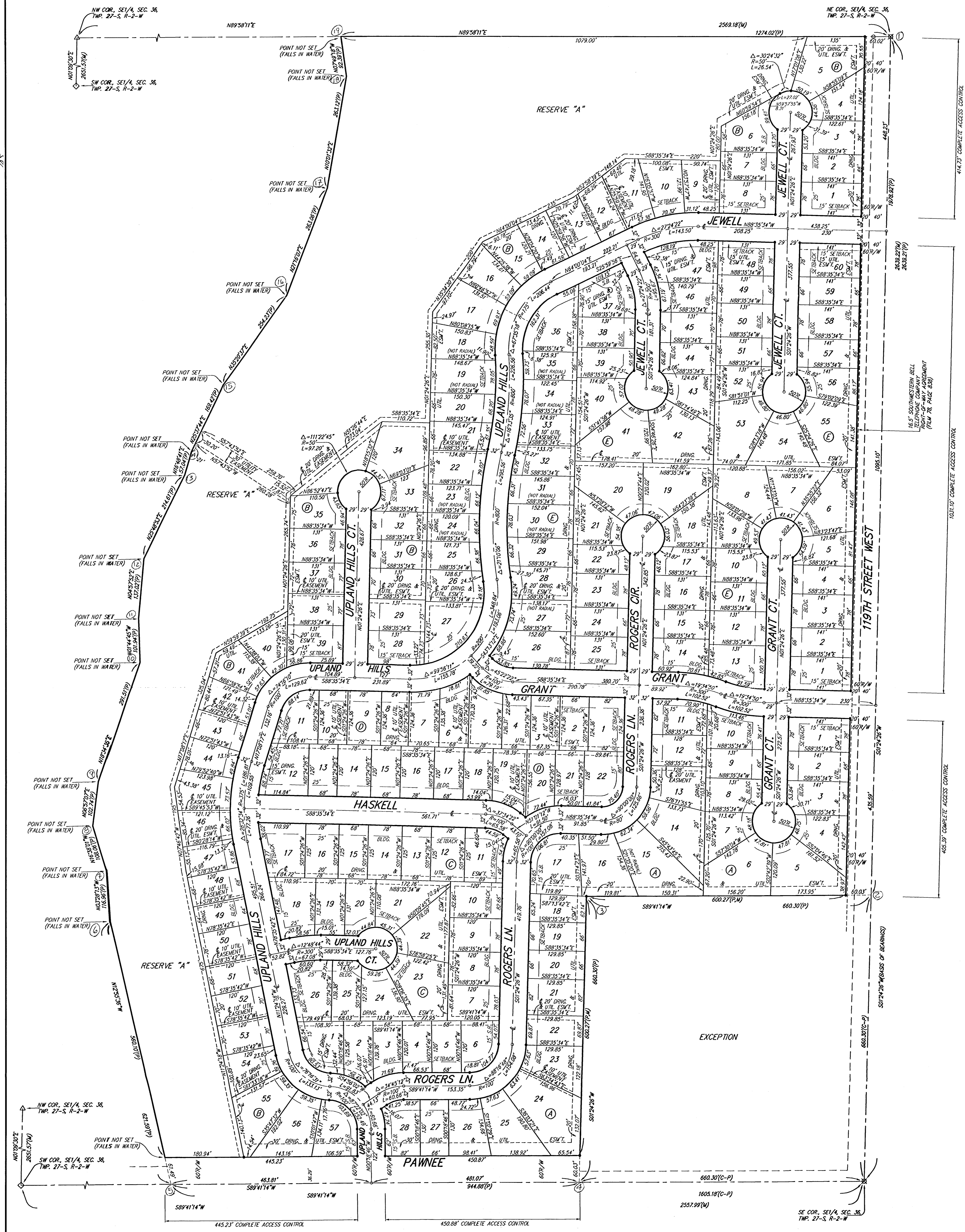
State of Kansas) SS
 Sedgwick County) This is to certify that this plat has been filed for record in the office of the Register of Deeds, this _____ day of _____, 2004 at _____ o'clock _____ M.; and is duly recorded.

_____, Register of Deeds
 Bill Meek

_____, Deputy
 Linda Kizzire

TURKEY CREEK 2ND ADDITION

WICHITA, SEDGWICK COUNTY, KANSAS



MINIMUM BUILDING PAD ELEVATIONS FOR LOWEST OPENING TO THE STRUCTURES

LOT	BLOCK	ELEVATION
5-12	B	1328.1
13-19	B	1328.3
20, 21, 34	B	1328.4
35	B	1328.4
36	B	1328.9
37	B	1330.4
38	B	1330.9
39-41	B	1331.4
42-44	B	1331.6
45-47	B	1332.1
48-50	B	1332.4
51-53	B	1332.6
54-57	B	1332.9

BENCHMARK:
 19TH ST. W. & PAWNEE
 CITY OF WICHITA BENCHMARK DISC
 NE CORNER OF INTERSECTION
 40.00' E. OF &
 30.00' N. OF E.
 59.50' N. OF P.P. AT SE COR.
 OF INTERSECTION
 UNDER 19TH ST. W.
 HEADWALL ON CULVERT
 ELEV. = 1336.08 NGVD29
 (PER CITY RECORD)

NOTE:
 A master grading plan for drainage has been developed for this subdivision and is on file with the City of Wichita, Kansas. All drainage easements, right-of-way, or reserves shall remain as established grades or as modified with the approval of the City Engineer of the City of Wichita, Kansas. No obstructions which impede the flow of this drainage system be allowed.

- ⊙ = #4 REBAR w/ "BAUGHMAN" CAP (SET)
 - ⊙ = BOLT OVER STONE (FOUND)
 - ⊙ = #3 REBAR w/ "BAUGHMAN" CAP (FOUND)
 - ⊙ = 1/2" IRON IN THIMBLE (FOUND)
 - ⊙ = 1" IRON OVER STONE (FOUND)
- (M) = MEASURED
 (P) = PLATTED
 (C-P) = CALCULATED PER PLATTED INFO.

