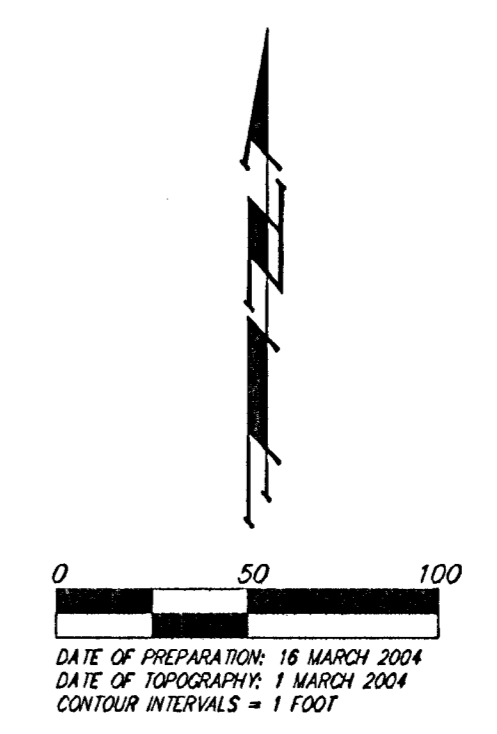


UTILITY PLAN
VOEGELI ADDITION
 WICHITA, SEDGWICK COUNTY, KANSAS



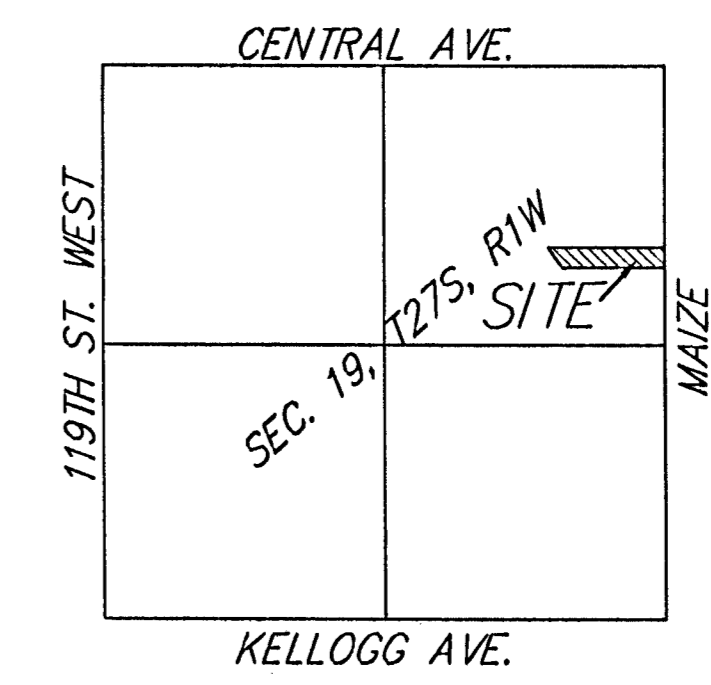
- DI = Drop Inlet
 - EM = Electric Meter
 - GM = Gas Meter
 - CA = Curb = Curb Anchor
 - LP = Light Pole
 - PP = Power Pole
 - Sign = Sign
 - SSMH = Sanitary Sewer Manhole
 - SOCMH = SBC Manhole
 - SBC Ped = SBC Pedestal
 - SWSMH = Stormwater Sewer Manhole
-
- # = #4 REBAR W/ "BAUGHMAN" CAP (FOUND)
 - = #4 REBAR W/ "BAUGHMAN" CAP (SET)
 - = 3/4" RIBBON PIPE (FOUND)
 - ⊙ = 1/2" REBAR W/SBS CAP (FOUND)
 - = SECTION CORNER (FOUND)
-
- (M) = MEASURED
 - (P) = PLATTED
 - (D) = DESCRIBED

OWNER:
 PRECISION DEVELOPMENT, INC.
 ATTN: PHIL A. VOEGELI
 1815 S. PATITE
 WICHITA, KS 67211
 PH: 316-264-3061

LOTS	BLOCK	ELEVATION	
		CITY DATUM	NGVD
1	A	139.0	1326.4

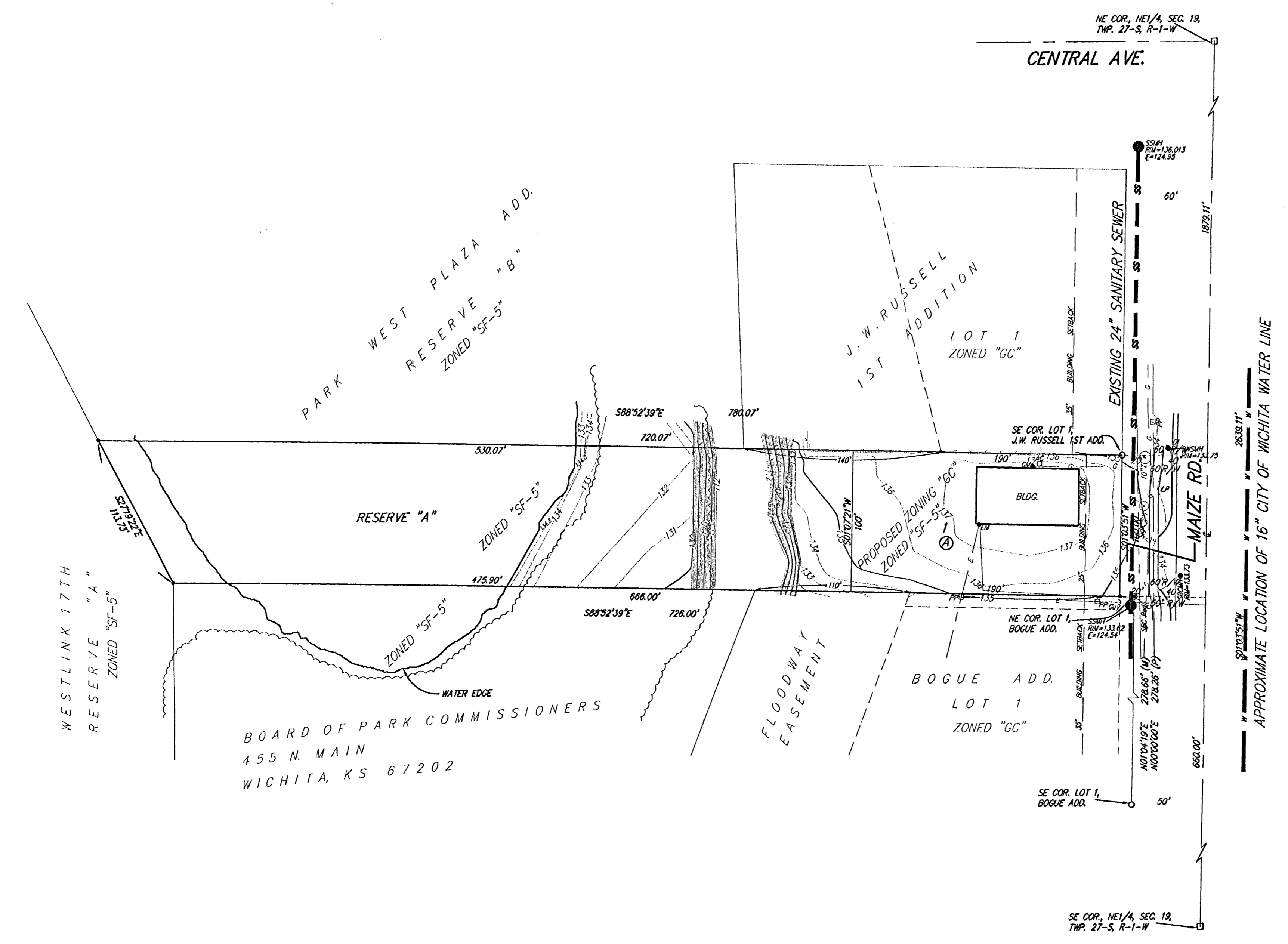
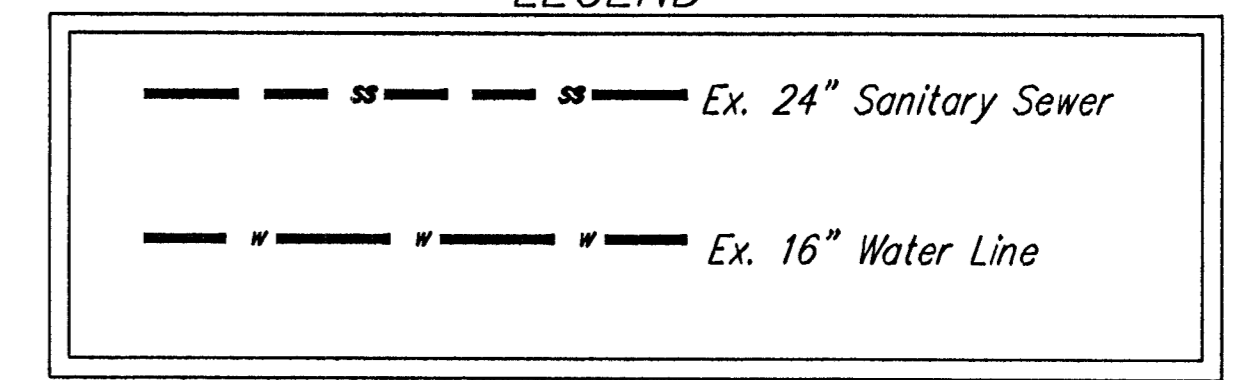
BENCHMARK:
 "□" CUT ON TOP OF CURB, NORTH SIDE SIETKES,
 NW OF CENTER LINE OF SIETKES CT., SHADYBROOK
 MEADOW ADDITION
 ELEV. = 135.19 CITY DATUM
 (1322.59 NGVD)

NOTE:
 A DRAINAGE PLAN HAS BEEN DEVELOPED FOR THIS SUBDIVISION AND IS ON FILE WITH THE CITY OF WICHITA, KANSAS. DRAINAGE INTENT SHALL REMAIN AS DEPICTED OR AS MODIFIED WITH THE APPROVAL OF THE CITY ENGINEER OF THE CITY OF WICHITA, KANSAS. NO OBSTRUCTIONS WHICH IMPEDE THE FLOW OF THIS DRAINAGE PLAN SHALL BE ALLOWED.



VICINITY MAP

LEGEND



BOARD OF PARK COMMISSIONERS
 455 N. MAIN
 WICHITA, KS 67202