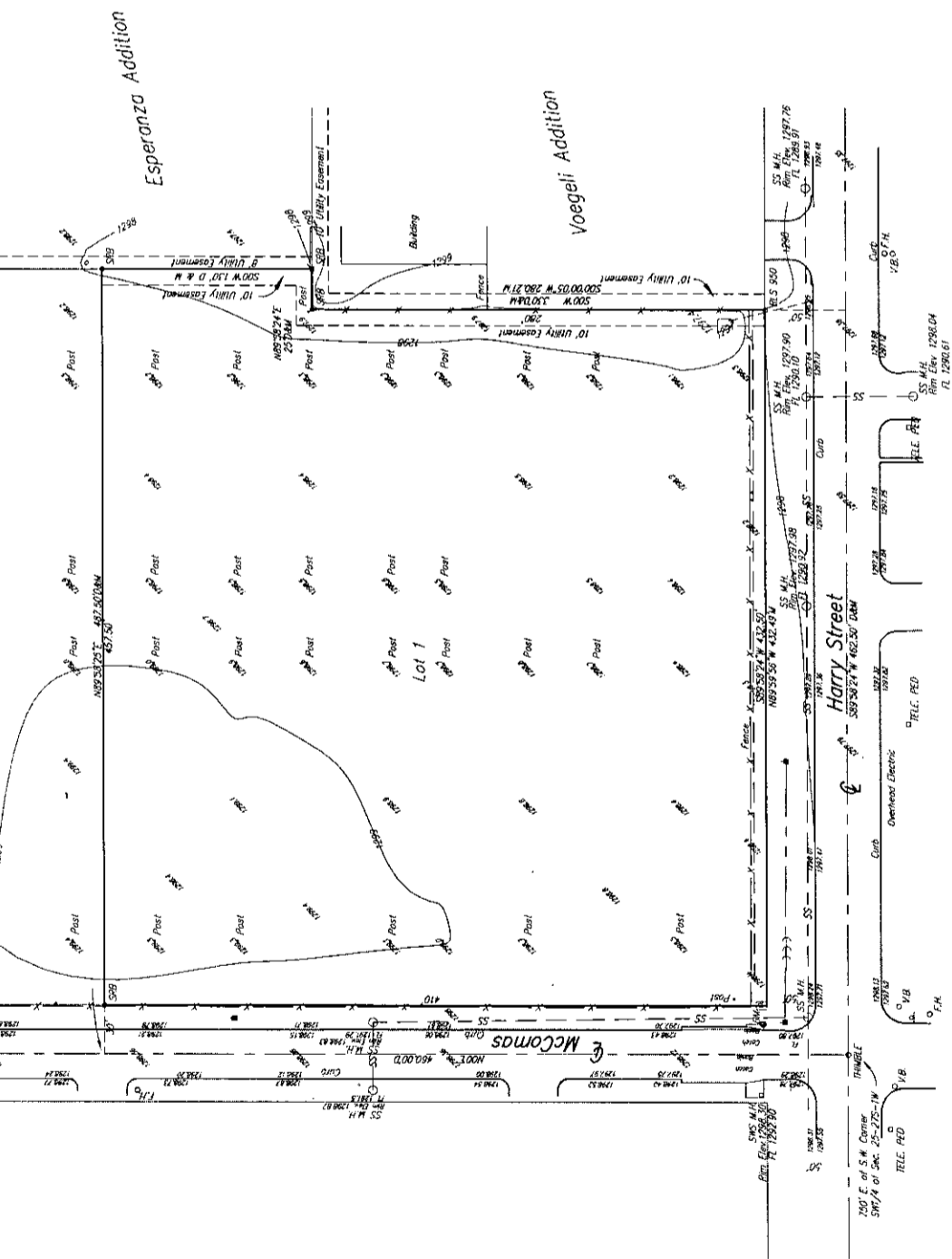


# Preliminary Plat

## VOEGELI 2ND ADDITION

Wichita, Sedgwick County, Kansas.



**LEGAL DESCRIPTION:**

That part of the SW1/4 of Sec. 25, Twp. 27S, R-1-W of the 6th P.M., Sedgwick County, Kansas, described as commencing at the S.W. Corner of said SW1/4; thence east along the South Line of said SW1/4, 750 feet for a place of beginning; thence north parallel with the West Line of said SW1/4, 460 feet; thence east, parallel with the South Line of said SW1/4, 487.5 feet; thence south, parallel with the West Line of said SW1/4, 130 feet; thence west, parallel with the South Line of said SW1/4, 25 feet; thence south, parallel with the West Line of said SW1/4, 330 feet to the South Line of said SW1/4; thence west, along the South Line of said SW1/4, 462.5 feet to the place of beginning.

**Owner:**  
Randall E. Voegeli  
& Barbara D. Voegeli  
3506 W. Harry  
Wichita, KS 67213

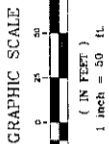
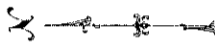
**CROSS AREA:**  
21099.96 Sq. Ft.±  
4.96 Acres±

**NET AREA:**  
180574.96 Sq. Ft.±  
4.15 Acres±

**MINIMUM LOT SIZE:**  
180574.96 Sq. Ft.±  
4.15 Acres±

**EXISTING ZONING:** LI - Limited Industrial

**CONTROL NO.** 492265



ON SITE BENCH MARK  
TILE SET CORNER OF  
CATCH BASIN ON THE N.E.  
CORNER OF MCCOMAS AND  
HARRY STREET  
ELEV. = 1298.46 N.G. 10.

**LEGEND**

M = Measured  
D = Deducted  
X = Top of Cap  
T = Flow Line  
G = Gas Main  
UBT = Under Ground Imposter

- TELE. POLE . . . . . TELEPHONE TELESTAL
- V.B. . . . . VALVE BOX
- F.H. . . . . FIRE HYDRANT
- . . . . . POST
- . . . . . POWER POLE
- . . . . . CUT ANCHOR
- . . . . . SIGN
- S.M.H. . . . . STORM WATER SEWER MANHOLE
- S.S.M.H. . . . . SANITARY SEWER MANHOLE
- T.M.B. . . . . CITY OF WICHITA CONTROL (ROUND)
- P.S. 950 . . . . . 1/2" REBAR W/PS 950 CAP (ROUND)
- S.R. . . . . 1/2" REBAR W/500 CAP (ROUND)
- C.N. . . . . CONCRETE NAIL (ROUND)
- T.M. . . . . ON SITE BENCH MARK



**Savoy Company, P.A.**  
Land Surveyors  
330 S. Emporia, Suite 104, Wichita, KS 67202  
www.savoyco.com