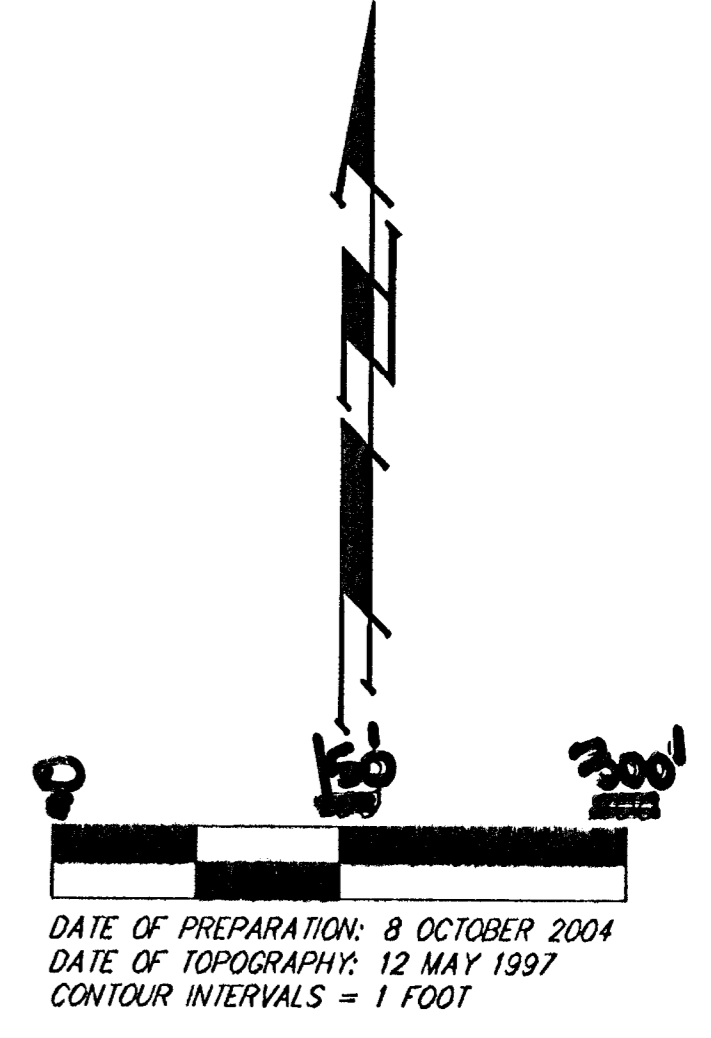
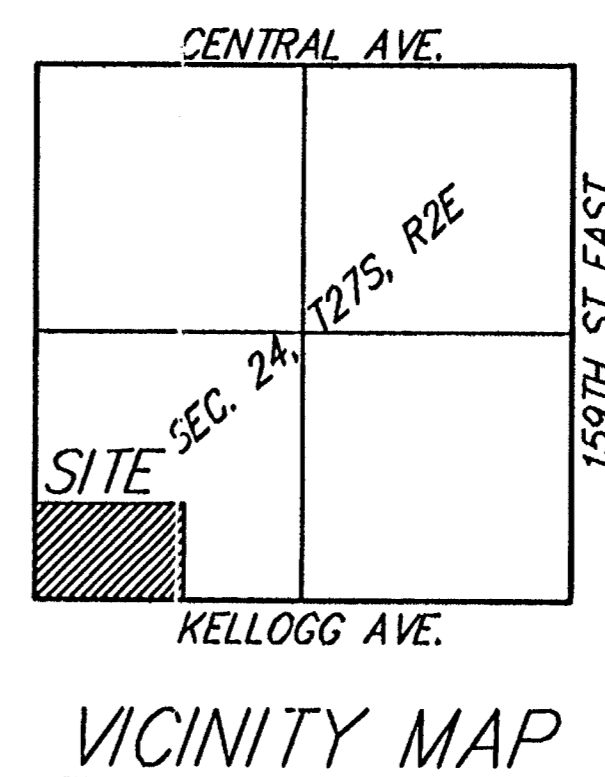
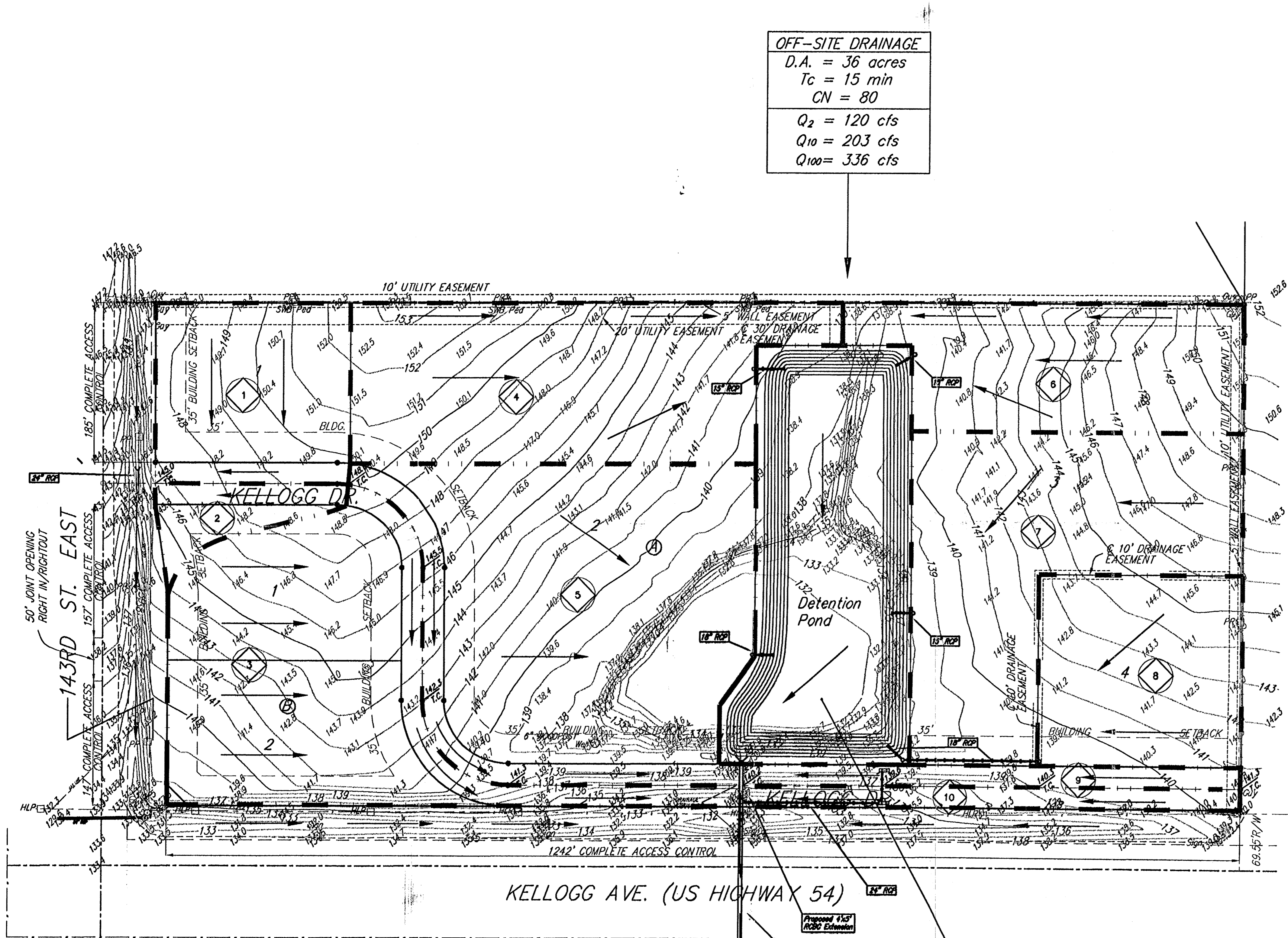


DRAINAGE PLAN

PRAIRIE POND PLAZA ADDITION

WICHITA, SEDGWICK COUNTY, KANSAS

OFF-SITE DRAINAGE
 D.A. = 36 acres
 Tc = 15 min
 CN = 80
 Q₂ = 120 cfs
 Q₁₀ = 203 cfs
 Q₁₀₀ = 336 cfs



Basin ID	Area acres	Flowrates		
		2-yr cfs	10-yr cfs	100-yr cfs
1	1.1	2.0	3.2	5.7
2	0.3	0.6	0.9	1.6
3	6.5	12.1	19.0	33.7
4	2.1	3.9	6.1	10.9
5	3.3	6.1	9.6	17.1
6	1.4	2.6	4.1	7.3
7	2.2	4.1	6.4	11.4
8	1.2	2.2	3.5	6.2
9	0.3	0.6	0.9	1.6
10	0.3	0.6	0.9	1.6

POND DATA
 Static WS Elev = 133.0 City Datum
 100-yr WS Elev = 138.6 City Datum
 Q₁₀₀ Inflow = 336 cfs
 Q₁₀₀ Outflow = 184 cfs