

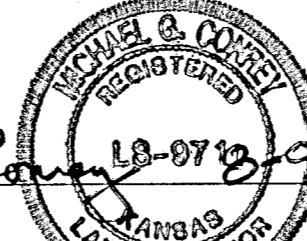
SOUTH RIDGE ACRES

SEDGWICK COUNTY, KANSAS

State of Kansas) SS
 Sedgwick County) We, Baughman Company, P.A., Surveyors in
 aforesaid county and state do hereby certify that we have surveyed and
 platted "SOUTH RIDGE ACRES", Sedgwick County, Kansas and that the
 accompanying plat is a true and correct exhibit of the property surveyed,
 described as Beginning at a point on the west line and 1115.97 feet north
 of the SW corner of the W1/2 of the SW1/4 of Section 15, Twp. 28-S,
 R-1-W of the 6th P.M., Sedgwick County, Kansas; thence continuing
 north along the west line of said SW1/4 bearing N00°00'00"E, a distance
 of 1336.42 feet to a point which is 128.82 feet south of the NW corner
 of said SW1/4; thence S88°35'00"E a distance of 1327.32 feet; thence
 S00°09'44"E, along the east line of the W1/2 of said SW1/4, 1286.25 feet
 to a point 1115.93 feet north of the SE corner of said W1/2 of SW1/4;
 thence S89°15'07"W parallel with the south line of said SW1/4 a distance
 of 1330.67 feet to point of beginning; EXCEPT the west 30 feet thereof
 for road; AND EXCEPT that part conveyed for highway on Film 609, Page
 1222, and on Film 1160, Page 1780.

Existing public easements and dedications being vacated by virtue
 of K.S.A. 12-512(b).

Baughman Company, P.A.


Michael A. Conroy
 Michael G. Conroy, Surveyor

This plat of "SOUTH RIDGE ACRES", Wichita, Sedgwick County, Kansas has been submitted to and approved by the Wichita-Sedgwick County Metropolitan Area Planning Commission, Wichita, Kansas.

Dated this _____ day of _____, 2001.
 Wichita-Sedgwick County Metropolitan Area Planning Commission

_____, Acting Chair
 J. D. Michaelis
 _____, Secretary
 Marvin S. Krout

This plat approved and all dedications shown hereon accepted by the City Council of the City of Wichita, Kansas, this _____ day of _____, 2001.

At the direction of the City Council
 _____, City Manager
 Chris Cherches
 _____, City Clerk
 Pat Burnett

This plat approved and all dedications shown hereon accepted by the Board of Commissioners of Sedgwick County, Kansas, this _____ day of _____, 2001.

_____, Chair
 Carolyn McGinn
 ATTEST: _____, County Clerk
 Don Brace

Reviewed in accordance with K.S.A. 58-2005 on this _____ day of _____, 2001.

Tricia L. Robello, L.S. #1246
 Deputy County Surveyor
 Sedgwick County, Kansas

Know all men by these presents that we, the undersigned, have caused the land in the surveyors certificate to be platted into Lots, a Block, and Streets, to be known as "SOUTH RIDGE ACRES", Sedgwick County, Kansas. The drainage and utility easement is hereby granted as indicated for drainage purposes and for the construction and maintenance of all public utilities. The floodway reserve is hereby reserved for floodway purposes and shall be the responsibility of the owners of each respective Lot, until such time as the appropriate governing body elects to assume the responsibility for maintenance and improvements to the drainage. No buildings shall be constructed or placed on or within said floodway, nor shall any fill, change of grade, creation of channel or other work be carried on without the permission of the Engineer for said appropriate governing body. The streets are hereby dedicated to and for the use of the public. All abutters rights of access to or from Ridge Road over and across the east line of Lot 1, Block A, are hereby granted to the appropriate governing body. The Minimum Building Pad Elevations for the lowest opening to the structures shall be as indicated on the face of the plat.

Pearson Excavating, Inc.

_____, President
 George Pearson

Entered on transfer record this _____ day of _____, 2001.

_____, County Clerk
 Don Brace

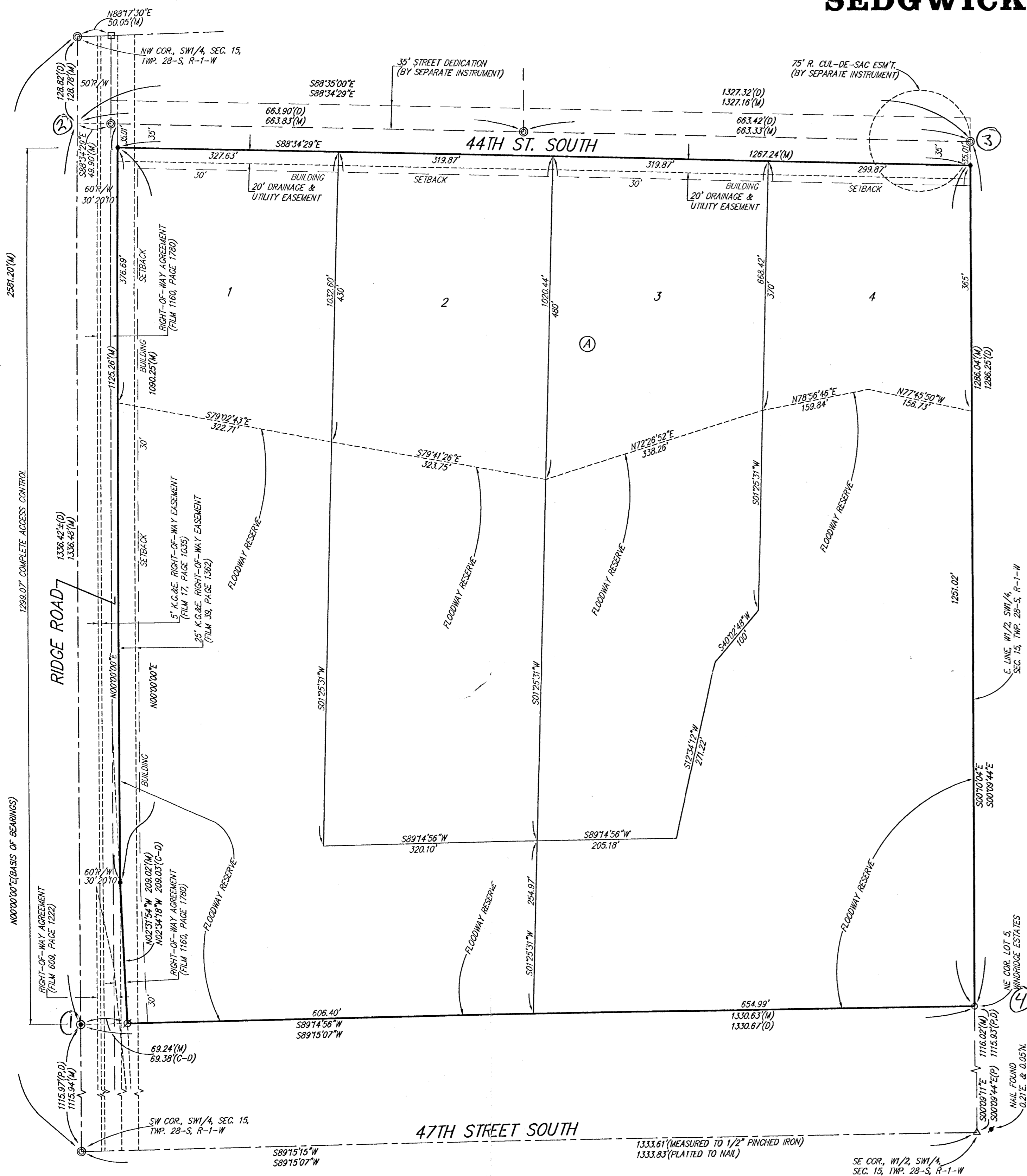
State of Kansas) SS
 Sedgwick County) The foregoing instrument acknowledged before me, this _____ day of _____, 2001, by George Pearson, President of Pearson Excavating, Inc., on behalf of the corporation.

_____, Notary Public
 My App't. Exp. _____

State of Kansas) SS This is to certify that this plat has been
 Sedgwick County) filed for record in the office of the Register of Deeds, this _____ day
 of _____, 2001 at _____ o'clock _____ M.; and is duly recorded.

_____, Register of Deeds
 Bill Meek

_____, Deputy
 Linda Kizzire



- = #4 REBAR W/ "BAUGHMAN" CAP (SET)
- = 1/2" IRON (FOUND)
- = #4 REBAR W/ "JLA" CAP (FOUND)
- = #4 REBAR (FOUND)
- = 1/4" IRON (FOUND)
- △ = 1/2" PINCHED IRON (FOUND)
- ▲ = NAIL (FOUND)

(M) = MEASURED
 (D) = DESCRIBED
 (P) = PLATTED
 (C-D) = CALCULATED PER DESCRIBED INFO

LOT	BLOCK	ELEVATION
1	A	1296.0
2	A	1295.0
3-4	A	1294.0

BEVONMARK:
 CHSLED "C" ON THE NE CORNER OF R.C.B.C. UNDER RIDGE ROAD OVER DRY CREEK.
 ELEV. = 1298.75 NGVD

NOTE:
 A MASTER GRADING PLAN FOR DRAINAGE HAS BEEN DEVELOPED FOR THIS SUBDIVISION AND IS ON FILE IN THE OFFICE OF THE COUNTY ENGINEER OR THE ENGINEER FOR THE APPROPRIATE GOVERNING BODY. ALL DRAINAGE EASEMENTS, RIGHTS-OF-WAY, OR RESERVES SHALL REMAIN AT ESTABLISHED GRADES OR AS MODIFIED WITH THE APPROVAL OF THE COUNTY ENGINEER OR THE ENGINEER FOR THE APPROPRIATE GOVERNING BODY. NO OBSTRUCTIONS WHICH IMPEDE THE FLOW OF THIS DRAINAGE SYSTEM SHALL BE ALLOWED.

NOTE:
 PIPELINE EASEMENT GRANTED TO CITIES SERVICE OIL CO., (MISC. BOOK 372, PAGE 403), AND LAST ASSIGNED TO CITY CITIES SERVICE OIL CO., INC. (FILM 968, PAGE 721), IS IN THE PROCESS OF BEING RELEASED THIS 9TH DAY OF AUGUST, 2001.
 PIPELINE EASEMENT GRANTED TO CITIES SERVICE OIL CO., (MISC. BOOK 623, PAGE 20), IS IN THE PROCESS OF BEING RELEASED THIS 9TH DAY OF AUGUST, 2001.

