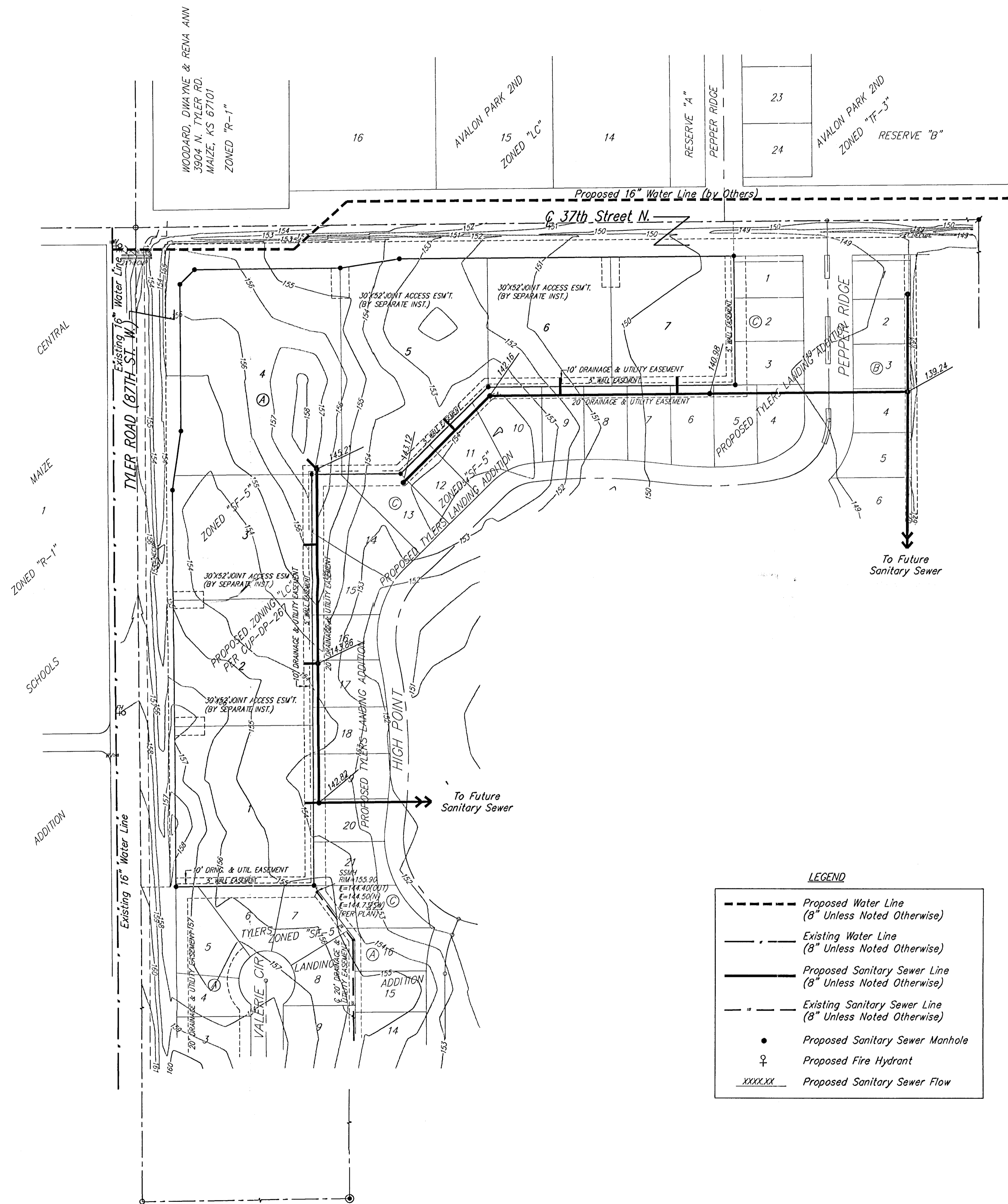



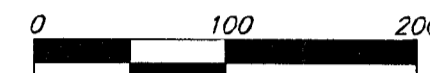
UTILITY PLAN

TYLER'S LANDING COMMERCIAL ADDITION

WICHITA, SEDGWICK COUNTY, KANSAS







DATE OF PREPARATION: MAY 27, 2004
 DATE OF TOPOGRAPHY: JULY 1, 2002
 CONTOUR INTERVALS = 1 FOOT

- ⊙ = #4 Baughman Rebar (Found)
- = #4 Baughman Rebar (Set)
- = 3/4" Iron Pipe (Found)
- ⊠ = Rail Road Spike (Found)
- △ = 1/2" Iron Pipe in Thimble (Found)
- ⊖ = #4 P.E.C. Rebar (Found)
- ⊕ = 3/4" P.E.C. Iron Pipe (Found)
- ⊗ = #5 Rebar (Found)
- ⊘ = #4 S.R.B. Rebar (Found)
- ⊙ = 1/2" P.E.C. Iron Pipe (Found)

- OPC = Cable TV Pedestal
- EB□ = Electric Box
- FH○ = Fire Hydrant
- GA— = Guy Anchor
- HLPC = High Line Pole
- MB = Mail Box
- PM ⊖ = Pipeline Marker
- PP ⊖ = Power Pole
- SP ⊖ = Sign
- SSMH ● = Sanitary Sewer Manhole
- SWB Ped ⊖ = Southwestern Bell Pedestal
- SSWM ⊖ = Stormwater Sewer Manhole
- T ⊖ = Tree
- TP ⊖ = Telephone Pole
- WV ⊖ = Water Valve

LEGEND

- Proposed Water Line (8" Unless Noted Otherwise)
- - - Existing Water Line (8" Unless Noted Otherwise)
- Proposed Sanitary Sewer Line (8" Unless Noted Otherwise)
- - - Existing Sanitary Sewer Line (8" Unless Noted Otherwise)
- Proposed Sanitary Sewer Manhole
- ♀ Proposed Fire Hydrant
- XXXX.XX Proposed Sanitary Sewer Flow

