

SHOAL CREEK 3RD ADDITION

WICHITA, SEDGWICK COUNTY, KANSAS

This plat of "SHOAL CREEK 3RD ADDITION", Wichita, Sedgwick County, Kansas has been submitted to and approved by the Wichita-Sedgwick County Metropolitan Area Planning Commission, Wichita, Kansas.

Dated this _____ day of _____, 2004.
Wichita-Sedgwick County Metropolitan Area Planning Commission

_____, Chair
Ronald L. Marnell

_____, Secretary
John L. Schlegel

This plat approved and all dedications shown hereon accepted by the City Council of the City of Wichita, Kansas, this _____ day of _____, 2004.

_____, Mayor
Carlos Mayans

_____, City Clerk
Karen Sublett

Reviewed in accordance with K.S.A. 58-2005 on this _____ day of _____, 2004.

_____, Surveyor
Michael G. Conrey

Know all men by these presents that we, the undersigned, have caused the land in the surveyors certificate to be platted into Lots, Blocks, a Reserve, and Streets, to be known as "SHOAL CREEK 3RD ADDITION", Wichita, Sedgwick County, Kansas. The utility easements are hereby granted as indicated for the construction and maintenance of all public utilities. The drainage and utility easements are hereby granted as indicated for drainage purposes and for the construction and maintenance of all public utilities. The street, drainage, and utility easements are hereby granted as indicated for street related purposes, for drainage purposes, and for the construction and maintenance of all public utilities. The streets are hereby dedicated to and for the use of the public. Reserve "A" is hereby reserved for entry monuments, landscaping, streets, open space, and utilities. Reserve "A" shall be owned and maintained by the homeowners association for the addition. Access controls shall be as depicted on the face of the plat and are hereby granted to the City of Wichita, Kansas. The Minimum Building Pad Elevations for the lowest opening to the structures shall be as indicated on the face of the plat.

_____, Member
Jay W. Russell

_____, Deputy County Surveyor
Tricia L. Robello, L.S. #1246
Sedgwick County, Kansas

Entered on transfer record this _____ day of _____, 2004.

_____, County Clerk
Don Brace

State of Kansas) SS This is to certify that this plat has been filed for record in the office of the Register of Deeds, this _____ day of _____, 2004 at _____ o'clock _____ M., and is duly recorded.

_____, Register of Deeds
Bill Meek

_____, Deputy
Linda Kizire

We the undersigned holders of a mortgage on the above described property, do hereby consent to this plat of "SHOAL CREEK 3RD ADDITION", Wichita, Sedgwick County, Kansas.

Kanza Bank

State of Kansas) SS The foregoing instrument acknowledged before me, this _____ day of _____, 2004, by _____ of Kanza Bank, on behalf of the bank.

_____, Notary Public
My App't. Exp. _____

State of Kansas) SS The foregoing instrument acknowledged before me, this _____ day of _____, 2004, by _____ of State Bank of Kingman, on behalf of the bank.

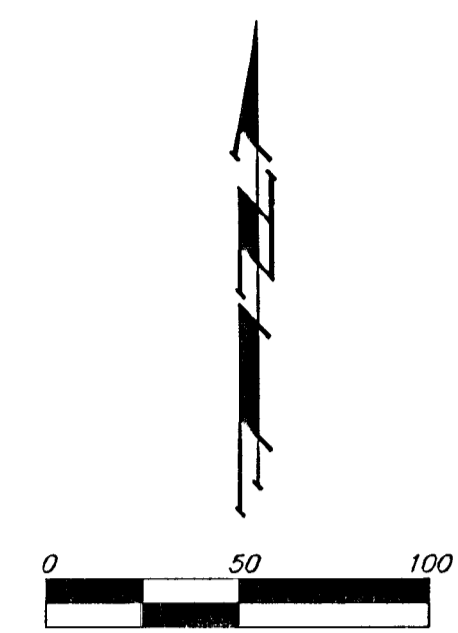
_____, Notary Public
My App't. Exp. _____

MINIMUM BUILDING PAD ELEVATIONS FOR LOWEST OPENING TO THE STRUCTURES		
LOTS	BLOCK	ELEVATION
1,2,3,4	A	141.6
		1329.0

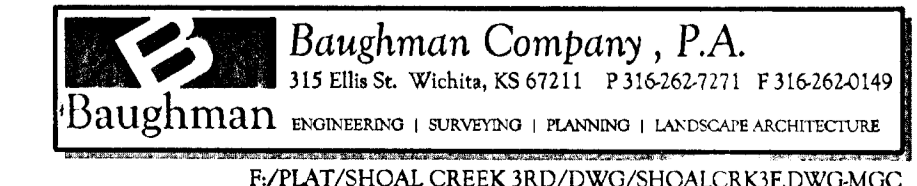
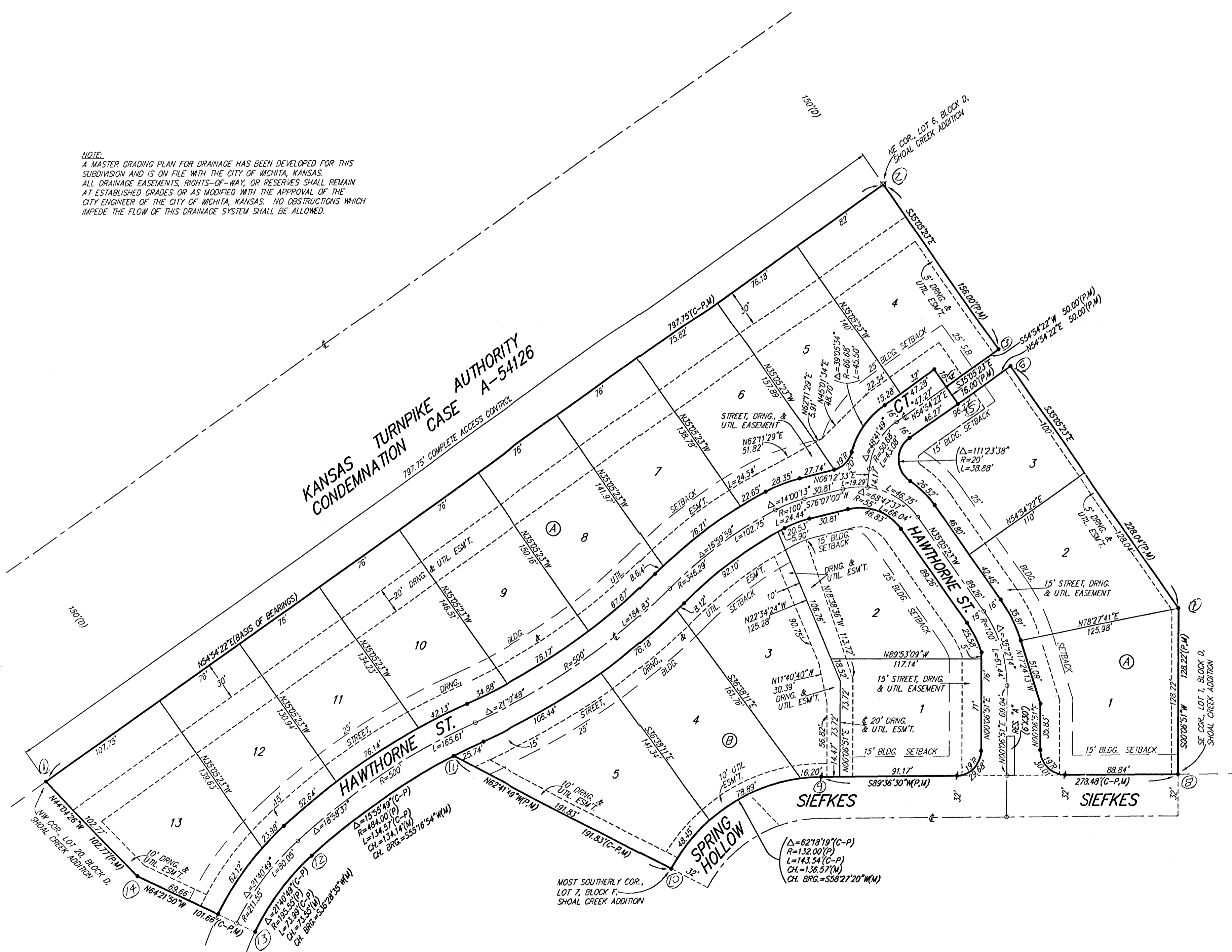
- = #4 REBAR W/ "BAUGHMAN" CAP (SET)
- ⊕ = #4 REBAR W/ "BAUGHMAN" CAP (FOUND)
- ⊗ = #4 REBAR W/ "PEC" CAP (FOUND)

- (M) = MEASURED
- (P) = PLATTED
- (C-P) = CALCULATED PER PLATTED INFO.

BENCHMARK:
"C3" CUT ON TOP OF CURB, NORTH SIDE SIEFKES, NW OF CENTER LINE OF SIEFKES CT., SHADYBROOK MEADOW ADDITION.
ELEV.= 135.19 CITY DATUM (1322.59 NGVD)



NOTE:
A MASTER GRADING PLAN FOR DRAINAGE HAS BEEN DEVELOPED FOR THIS SUBDIVISION AND IS ON FILE WITH THE CITY OF WICHITA, KANSAS. ALL DRAINAGE EASEMENTS, RIGHTS-OF-WAY, OR RESERVES SHALL REMAIN AT ESTABLISHED GRADES OR AS MODIFIED WITH THE APPROVAL OF THE CITY ENGINEER OF THE CITY OF WICHITA, KANSAS. NO OBSTRUCTIONS WHICH IMPEDE THE FLOW OF THIS DRAINAGE SYSTEM SHALL BE ALLOWED.



PLAT/SHOAL CREEK 3RD/DWG/SHOALCRK3F.DWG/MGC