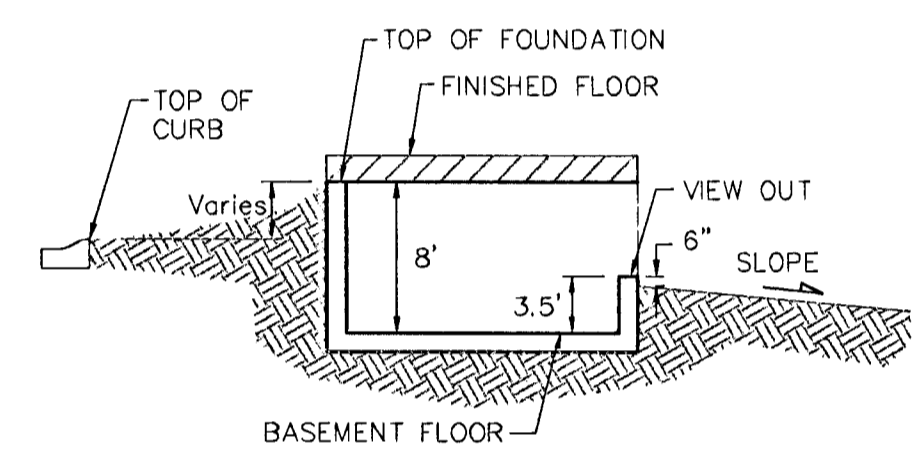


DATE OF PREPARATION: 14 JUNE 2004
CONTOUR INTERVALS = 1 FOOT

MINIMUM BUILDING PAD ELEVATIONS FOR LOWEST OPENING TO THE STRUCTURES			
LOTS	BLOCK	ELEVATION	
		CITY DATUM	NGVD
1,2,3,4	A	141.6	1329.0

BENCHMARK:
 "X" CUT ON TOP OF CURB, NORTH SIDE SIEFKES,
 NW OF CENTER LINE OF SIEFKES CT., SHADYBROOK
 MEADOW ADDITION.
 ELEV. = 135.19 CITY DATUM
 (1322.59 NGVD)



TYPICAL VIEW OUT
NO SCALE

NOTES:

A master grading plan for drainage has been developed for the subdivision and is on file with the City of Wichita, Kansas. Construction of residential structures must follow the master site grading plan elevations which are higher than the minimum pad requirement.

All drainage easements, rights-of-way, or reserves shall remain at established grades or as modified with the approval of the City Engineer of the City of Wichita, Kansas. No obstructions which impede the flow of this drainage system shall be allowed.

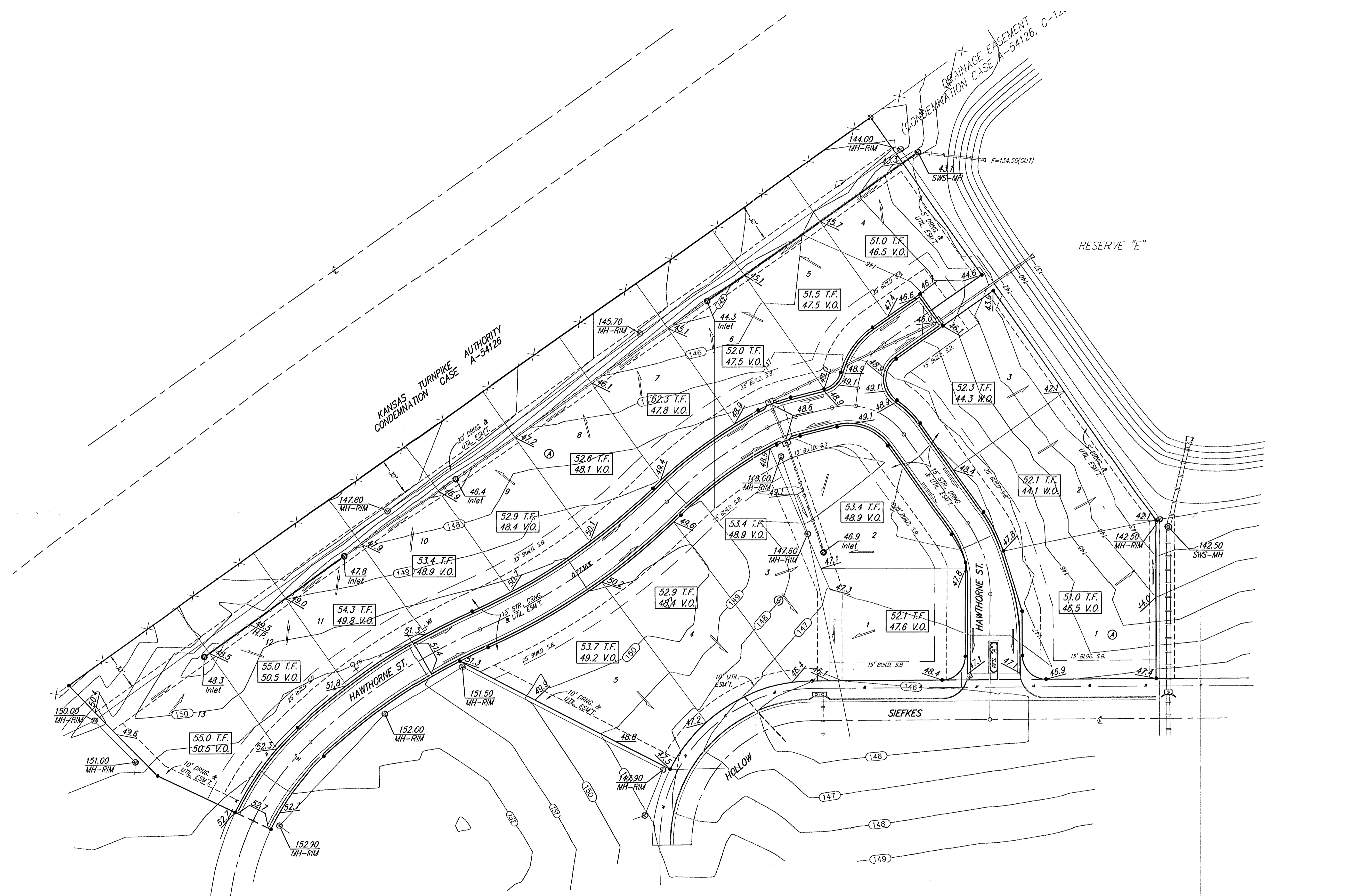
Proposed top of foundation elevations are shown on plans. contractor to set finished floor elevations.

All street elevations shown on plans are for top of curb (full-height). Typically roll-type curbs are constructed. Deduct 0.25' from top of curb (full-height).

This Grading Plan is designed with View-Out and Walk-Out Basements. Elevations shown at Rear of House (XX.X V.O. and XX.X W.O.) are for minimum opening.

All elevations shown on plans are City of Wichita Datum.

* Requires extra-deep foundation.



PRELIMINARY PLAN
NOT FOR CONSTRUCTION

		SHOAL CREEK 3RD ADDITION GRADING PLAN CITY OF WICHITA	
<small>Baughman Company, P.A. 315 8th St., Wichita, KS 67111 F 316-265-7211 F 316-265-0149 ENGINEERING SURVEYING PLANNING LANDSCAPE ARCHITECTURE</small>			
PROJECT NUMBER	DESIGN NBW/BLG	DRAWN BLG	
REVISIONS:	APPROVED	DATE	06-16-04
		SCALE noted	
		SHEET	1 OF 1